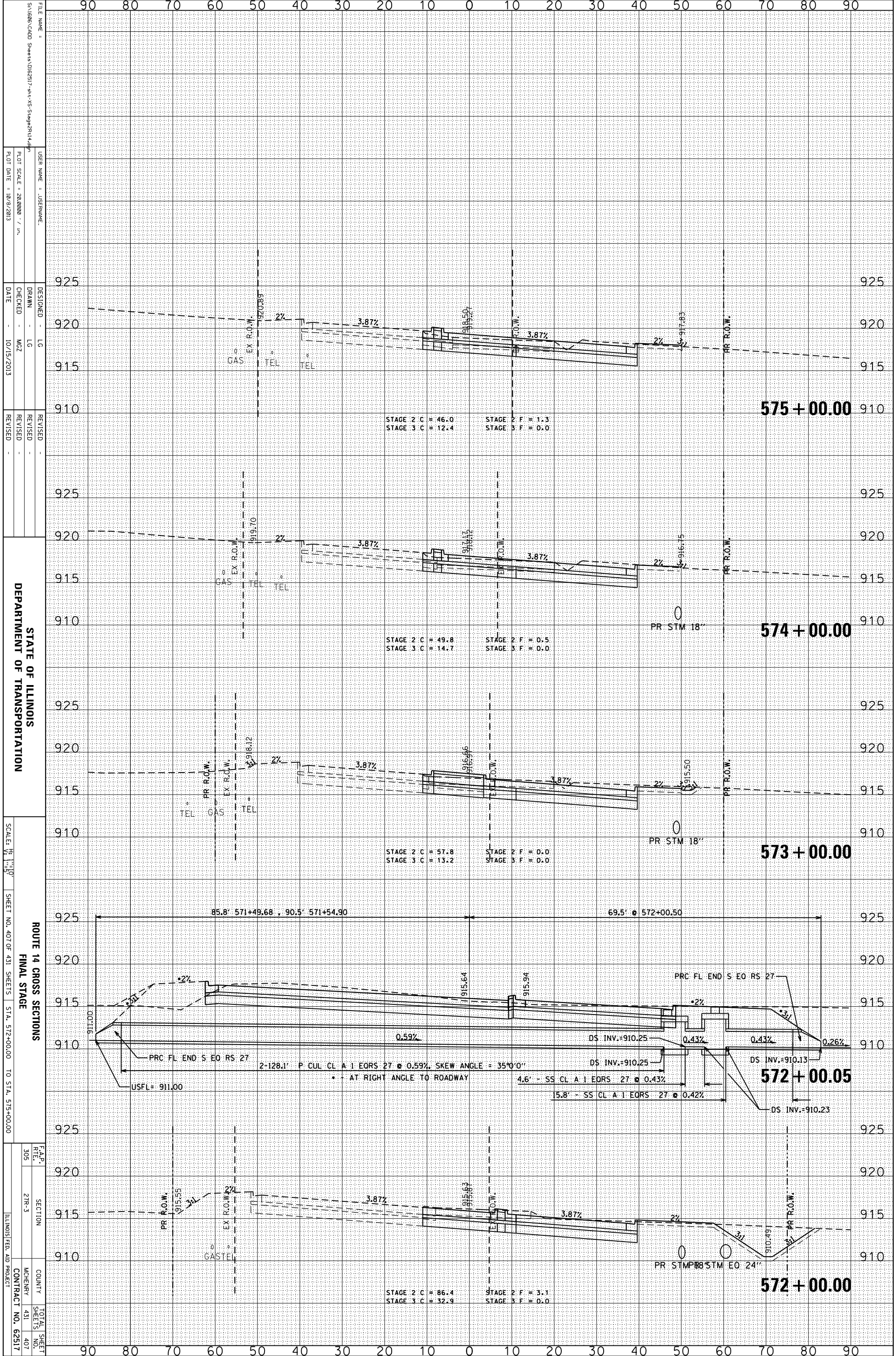


ORIGINAL SURVEY	SURVEYED	BY	DATE
NOTE BOOK	PLOTTED		
	TEMPLATE		
	AREAS		
	CHECKED		

FINAL SURVEY	SURVEYED	BY	DATE
NOTE BOOK	PLOTTED		
	TEMPLATE		
	AREAS		
	CHECKED		



FILE NAME = S:\1606\CADD Sheets\062517-rt-v3-Stage2\14.dwg
 USER NAME = JOSEPHNAME
 DESIGNER = LG
 DRAWN = LG
 CHECKED = MZ
 DATE = 10/15/2013
 REVISIONS

STATE OF ILLINOIS
 DEPARTMENT OF TRANSPORTATION

ROUTE 14 CROSS SECTIONS
 FINAL STAGE
 SCALE: 1" = 10'
 SHEET NO. 407 OF 431 SHEETS STA. 572+00.00 TO STA. 575+00.00

F.A.P. SECTION COUNTY TOTAL SHEET NO.
 305 27R-3 MCHENRY 431 407
 ILLINOIS FED. AID PROJECT CONTRACT NO. 62517

575 + 00.00

574 + 00.00

573 + 00.00

572 + 00.05

572 + 00.00

STAGE 2 C = 46.0 STAGE 2 F = 1.3
 STAGE 3 C = 12.4 STAGE 3 F = 0.0

STAGE 2 C = 49.8 STAGE 2 F = 0.5
 STAGE 3 C = 14.7 STAGE 3 F = 0.0

STAGE 2 C = 57.8 STAGE 2 F = 0.0
 STAGE 3 C = 13.2 STAGE 3 F = 0.0

STAGE 2 C = 86.4 STAGE 2 F = 3.1
 STAGE 3 C = 32.9 STAGE 3 F = 0.0

2-128.1' P CUL CL A 1 EORS 27 @ 0.59%, SKEW ANGLE = 35°0'0"
 • - AT RIGHT ANGLE TO ROADWAY
 4.6' - SS CL A 1 EORS 27 @ 0.43%
 15.8' - SS CL A 1 EORS 27 @ 0.42%

DS INV.=910.25 DS INV.=910.25 DS INV.=910.13 DS INV.=910.23

PRC FL END S EO RS 27 PRC FL END S EO RS 27

USFL = 911.00

85.8' 571+49.68, 90.5' 571+54.90 69.5' @ 572+00.50