

| F.A.P. RTE. | SECTION | COUNTY | TOTAL SHEETS | SHEET NO. |
|-------------|----------|----------|--------------------|-----------|
| 330 | (15)RS-5 | KANKAKEE | 31 | 1 |
| | | ILLINOIS | CONTRACT NO. 66427 | |

STATE OF ILLINOIS
DEPARTMENT OF TRANSPORTATION

DIVISION OF HIGHWAYS

**PROPOSED
HIGHWAY PLANS**

FAP ROUTE 330 (US 45/52)
SECTION (15)RS-5

**3P MILLING AND RESURFACING
KANKAKEE COUNTY**

C-93-029-04

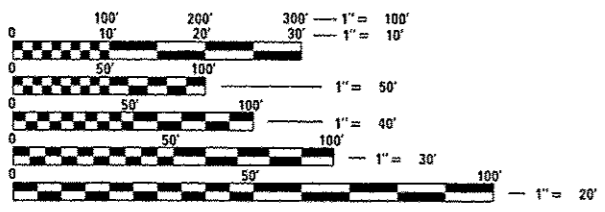
NORTH OF ARMOUR ROAD
TO SOUTH OF INDIAN OAKS /ST. GEORGE ROAD

INDEX OF SHEETS

- 1 COVER SHEET
- 2 GENERAL NOTES
- 3-6 SUMMARY OF QUANTITIES
- 7-8 TYPICAL SECTIONS
- 9-11 SCHEDULE OF QUANTITIES
- 12-20 PAVEMENT MARKING
- 21-28 LOOP DETECTOR DETAILS
- 29-31 DETAILS

LIST OF ILLINOIS DOT HIGHWAY STANDARDS

- 000001-06 STANDARD SYMBOLS, ABBREVIATIONS AND PATTERNS
- 001006 DECIMAL OF AN INCH AND OF A FOOT
- 424001-07 PERPENDICULAR CURB RAMPS FOR SIDEWALKS
- 424006-01 DIAGONAL CURB RAMPS FOR SIDEWALKS
- 424011-01 CORNER PARALLEL CURB RAMPS FOR SIDEWALKS
- 424016-01 MID-BLOCK CURB RAMPS FOR SIDEWALKS
- 424021-02 DEPRESSED CORNER FOR SIDEWALKS
- 424028-01 ENTRANCE / ALLEY PEDESTRIAN CROSSINGS
- 424031-01 MEDIAN PEDESTRIAN CROSSINGS
- 606001-05 CONCRETE CURB TYPE B AND COMBINATION CONCRETE CURB AND GUTTER
- 667101-02 PERMANENT SURVEY MARKERS
- 701306-03 LANE CLOSURE, 2L, 2W, SLOW MOVING OPERATIONS DAY ONLY, FOR SPEEDS ≥ 45 MPH
- 701311-03 LANE CLOSURE, 2L, 2W, MOVING OPERATIONS - DAY ONLY
- 701421-06 LANE CLOSURE, MULTILANE, DAY OPERATIONS ONLY, FOR SPEEDS ≥ 45 MPH TO 55 MPH
- 701501-06 URBAN LANE CLOSURE, 2L, 2W, UNDIVIDED
- 701802-07 URBAN LANE CLOSURE, MULTILANE, 2W WITH BIDIRECTIONAL LEFT TURN LANE
- 701701-09 URBAN LANE CLOSURE, MULTILANE INTERSECTION
- 701901-03 TRAFFIC CONTROL DEVICES
- 780001-04 TYPICAL PAVEMENT MARKINGS
- 781001-03 TYPICAL APPLICATIONS RAISED REFLECTIVE PAVEMENT MARKERS
- 886001-01 DETECTOR LOOP INSTALLATIONS
- 886008-01 TYPICAL LAYOUT FOR DETECTION LOOPS

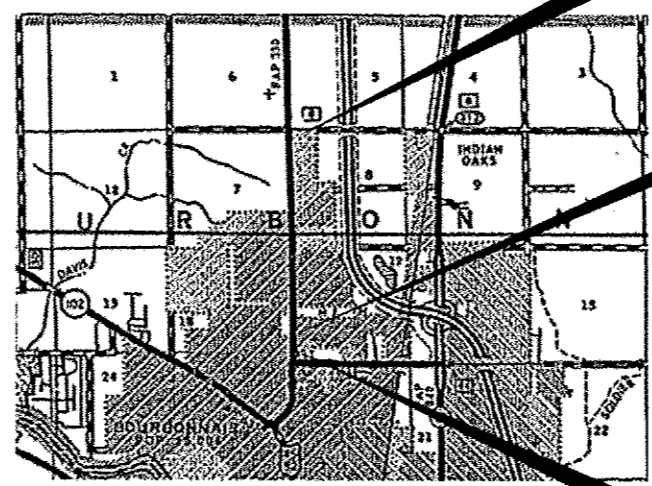


FULL SIZE PLANS HAVE BEEN PREPARED USING STANDARD ENGINEERING SCALES. REDUCED SIZED PLANS WILL NOT CONFORM TO STANDARD SCALES. IN MAKING MEASUREMENTS ON REDUCED PLANS, THE ABOVE SCALES MAY BE USED.

J.U.L.I.E.
JOINT UTILITY LOCATION INFORMATION FOR EXCAVATION
1-800-892-0123
OR 811

PROJECT ENGINEER: JOE KANNEL, PE
UNIT CHIEF: MICHELE LINDEMANN, PE

CONTRACT NO. 66427



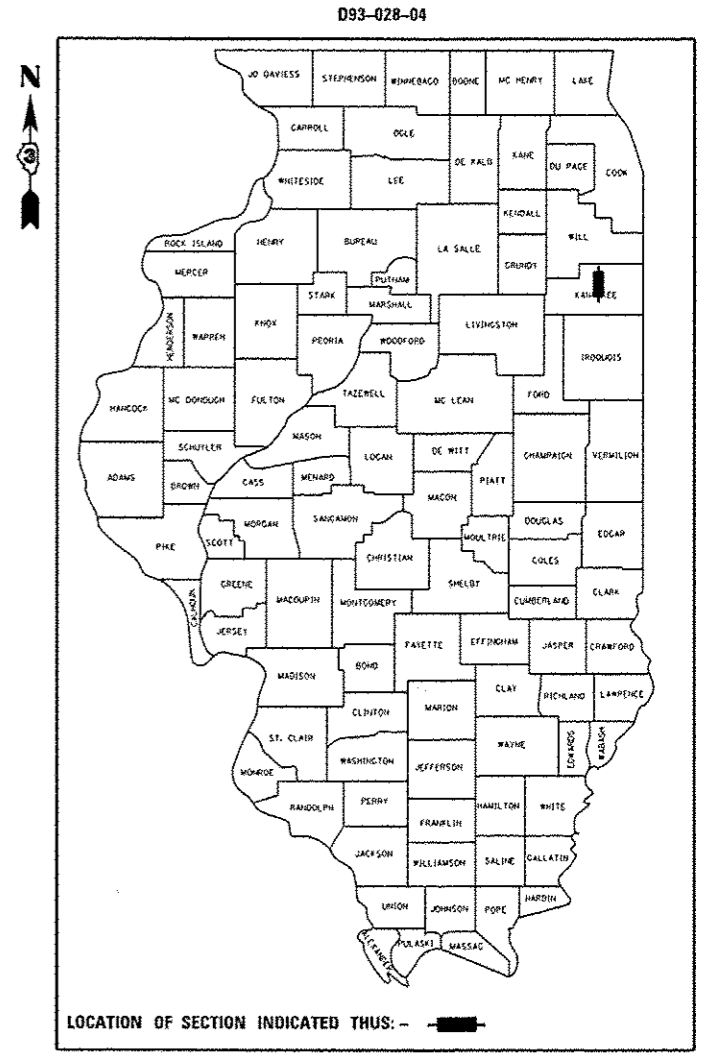
LOCATION MAP

GROSS LENGTH = 10,067.22 FEET = 1.907 MILES
NET LENGTH = 9392.22 FEET = 1.779 MILES

PROJECT ENDS
STA. 224 + 50

OMISSION
JOHN CASEY RD
STA 127 + 25 TO 134 + 00

PROJECT BEGINS
STA. 123 + 82.78



LOCATION OF SECTION INDICATED THIS: - [black rectangle] -

PRINCIPAL ARTERIAL URBAN

2013 ADT = 24,600
P.V. = 93.4% S.U. = 4.9% M.U. = 1.7%

STATE OF ILLINOIS
DEPARTMENT OF TRANSPORTATION
DIVISION OF HIGHWAYS

SUBMITTED June 6 20 14
Paul Coete, P.E.
DEPUTY DIRECTOR OF HIGHWAYS, REGION ENGINEER

June 27 20 14
John D. Baranzelli, P.E.
ENGINEER OF DESIGN AND ENVIRONMENT

June 27 20 14
Omer Osman, P.E.
DIRECTOR OF HIGHWAYS, CHIEF ENGINEER

PRINTED BY THE AUTHORITY
OF THE STATE OF ILLINOIS