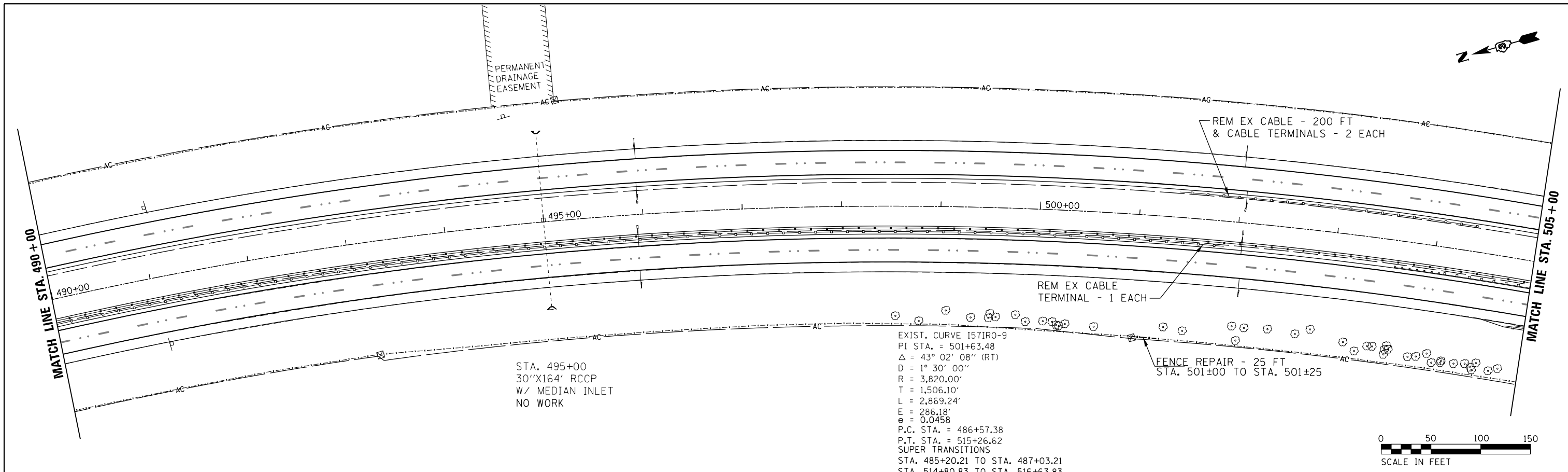


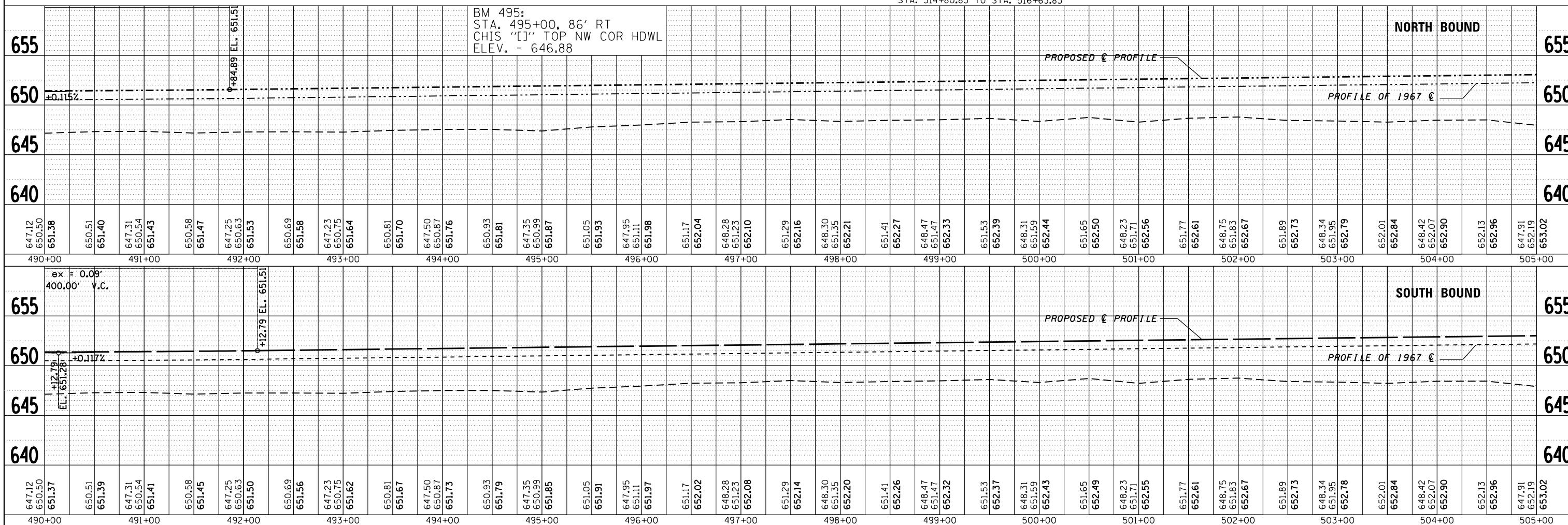
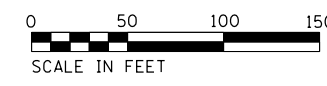
PLAN	SURVEYED	DATE
	PLOTTED	BY
	ALIGNMENT CHECKED	
	GRADE CHECKED	
	STRUCTURE NOTATIONS CHECKED	
	NOTE BOOK NO.	
	FIELD FILE NAME	

PROFILE	SURVEYED	DATE
	PLOTTED	BY
	GRADES CHECKED	
	STRUCTURE NOTATIONS CHECKED	
	NOTE BOOK NO.	
	FIELD FILE NAME	



STA. 495+00  
30"X164' RCCP  
W/ MEDIAN INLET  
NO WORK

EXIST. CURVE 1571R0-9  
PI STA. = 501+63.48  
Δ = 43° 02' 08" (RT)  
D = 1° 30' 00"  
R = 3,820.00'  
T = 1,506.10'  
L = 2,869.24'  
E = 286.18'  
e = 0.0458  
P.C. STA. = 486+57.38  
P.T. STA. = 515+26.62  
SUPER TRANSITIONS  
STA. 485+20.21 TO STA. 487+03.21  
STA. 514+80.83 TO STA. 516+63.83



BM 495:  
STA. 495+00, 86' RT  
CHIS "[J]" TOP NW COR HDWL  
ELEV. - 646.88

FILE NAME =	USER NAME = duncanbd	DESIGNED -	REVISED -	<b>STATE OF ILLINOIS DEPARTMENT OF TRANSPORTATION</b>	<b>PLAN AND PROFILE</b>		F.A.I. SHEET NO. 57	SECTION *	COUNTY IROQUOIS	TOTAL SHEETS 190	SHEET NO. 36
c:\pwwork\pwwork\duncanbd\dms30308\plansheets.dgn		CHECKED -	REVISED -		SCALE: 1"=50'	SHEET NO. 15 OF 17 SHEETS	STA. 490+00 TO STA. 505+00	* (38-4)RS-2, (38-4)BR,BR1,BR3		CONTRACT NO. 66757	
		DRAWN -	REVISED -				FED. ROAD DIST. NO.		ILLINOIS FED. AID PROJECT		
		CHECKED -	REVISED -								