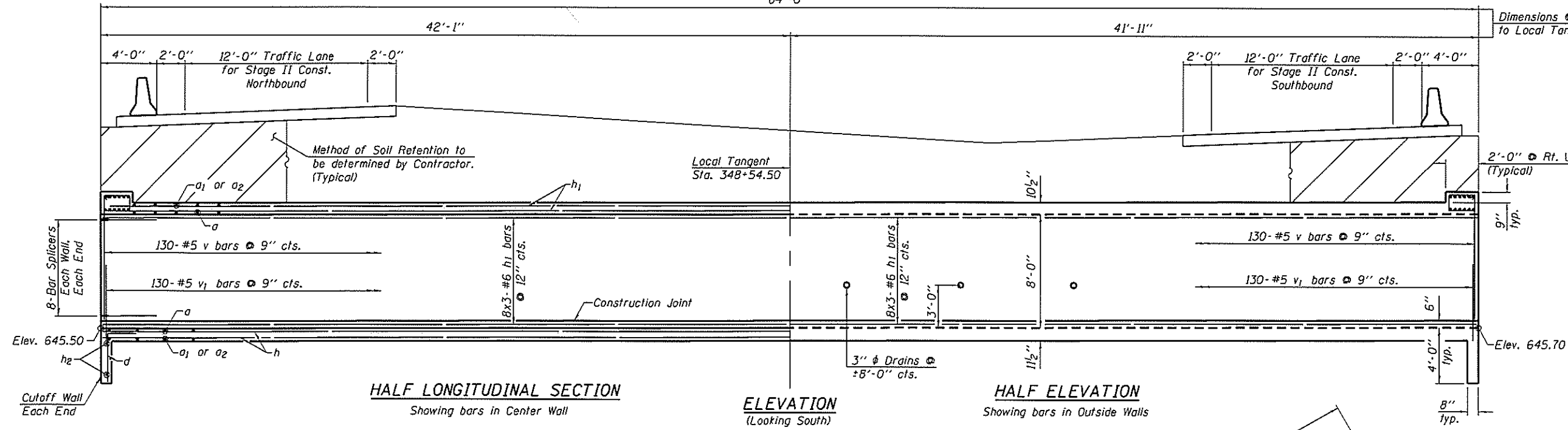


STATE OF ILLINOIS
DEPARTMENT OF TRANSPORTATION
84'-0"

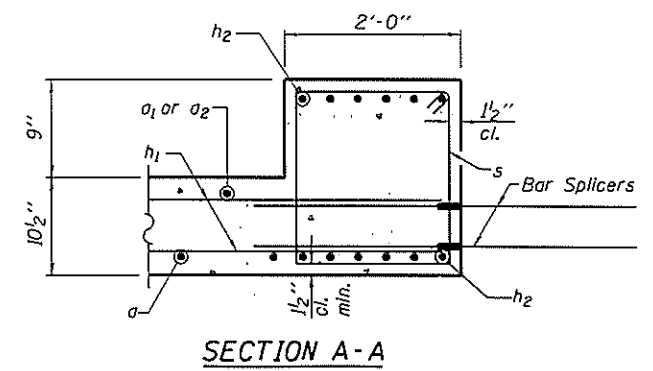
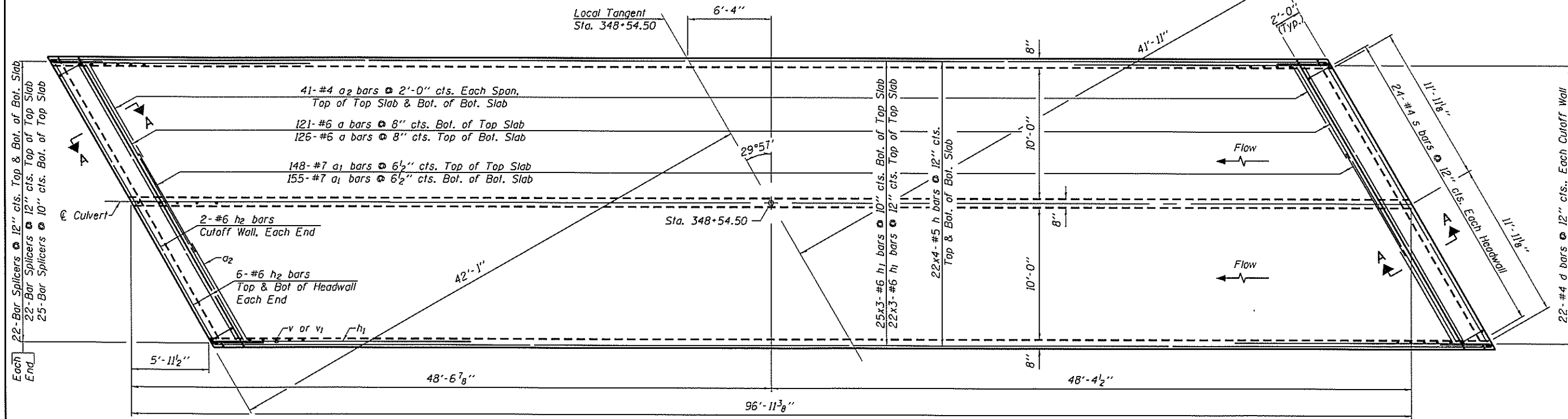
ROUTE NO.	SECTION	COUNTY	TOTAL SHEETS	SHEET NO.
F.A.I. 57	**	IROQUOIS	190	49
FED. ROAD DIST. NO.		ILLINOIS		
**138-4)RS-2, (38-4)BR		CONTRACT NO. 66757		

Sheet 4 of 11 Sheets
Dimensions @ Rt. L's to Local Tangent



BILL OF MATERIAL - STAGE I

Bar	No.	Size	Length	Shape
a	247	#6	26'-5"	
a1	303	#7	12'-0"	
a2	164	#4	7'-6"	
d	44	#4	5'-6"	
h	176	#5	25'-6"	
h1	213	#6	34'-0"	
h2	28	#6	25'-0"	
s	48	#4	7'-0"	
v	390	#5	8'-0"	
v1	390	#5	3'-0"	
Concrete Box Culverts			Cu. Yd.	208.9
Reinforcement Bars			Pound	39,520



DESIGNED	S.F.M.
CHECKED	J.A.M.
DRAWN	S.A.P.
CHECKED	S.F.M. & J.A.M.

SECTION A-A

Note: Bars indicated thus, 25x3-#6 etc. indicates 25 lines of bars with 3 lengths per line.

MINIMUM BAR LAP - BARREL

- #4.....1'-4"
- #5.....1'-8"
- #6.....2'-0"

Note: All bar spacings shown are at right angles to bars.

Note: See Sheet 7 of 11 for additional Culvert Details & Bar Bends. See Sheet 8 of 11 for Bar Splicer Details.

STAGE I CULVERT CONSTRUCTION
I-57 OVER
DANFORTH TOWNSHIP DRAINAGE DITCH
F.A.I. ROUTE 57
SECTION (38-4)RS-2, (38-4)BR
IROQUOIS COUNTY
STATION 348+54.50
S.N. 038-2021