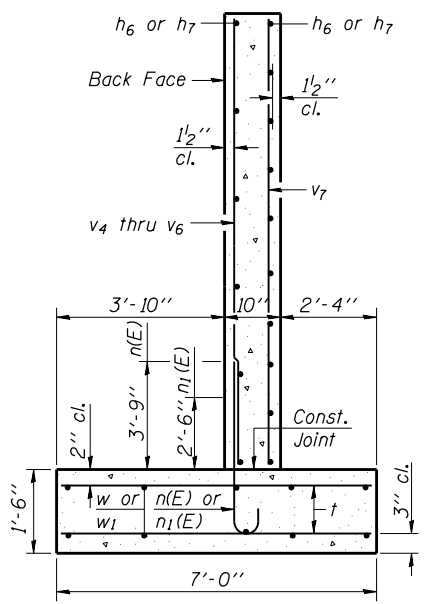
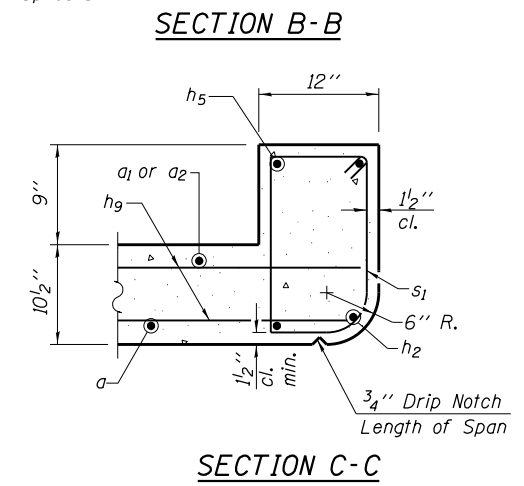
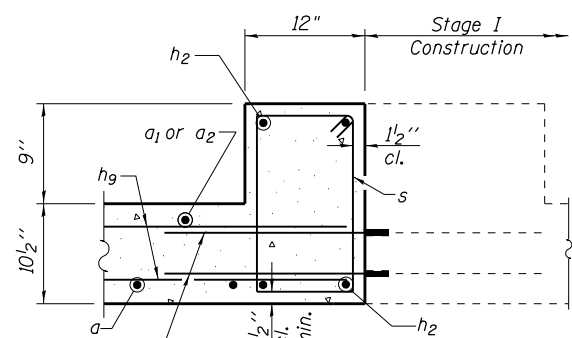
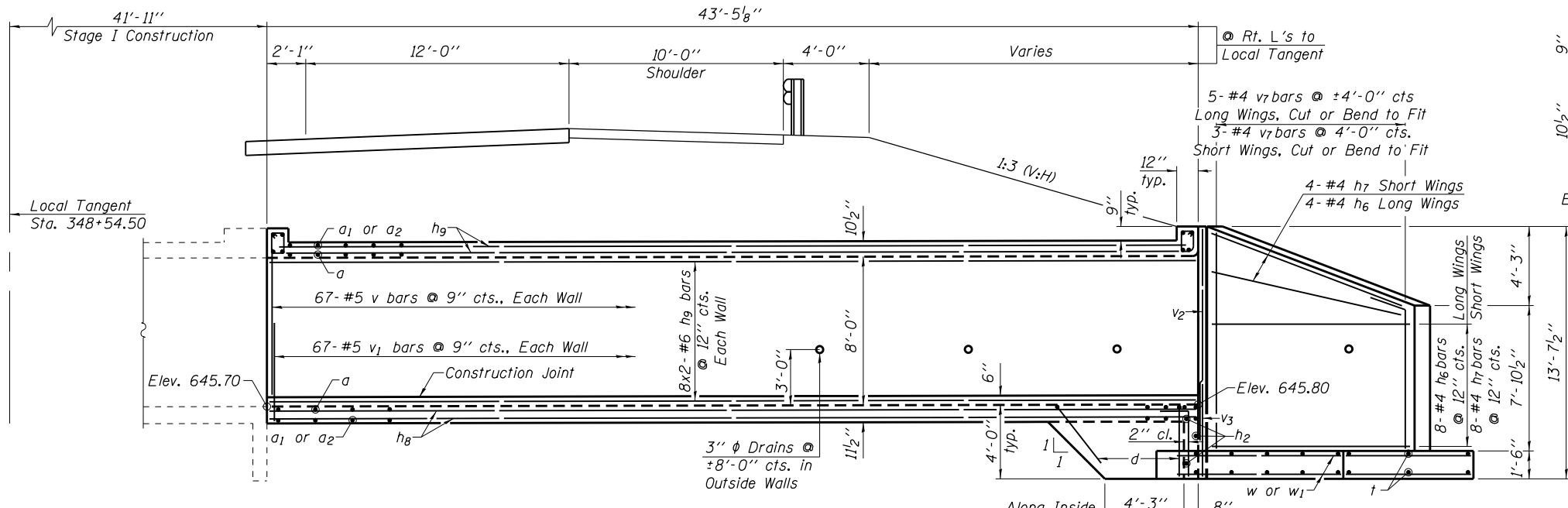


STATE OF ILLINOIS
DEPARTMENT OF TRANSPORTATION

ROUTE NO.	SECTION	COUNTY	TOTAL SHEETS	SHEET NO.
F.A.I. 57	••	IROQUOIS	190	50
FED. ROAD DIST. NO.	ILLINOIS	CONTRACT NO. 66757		
** (38-4)RS-2, (38-4)BR				
Sheet 5 of 11 Sheets				



MINIMUM BAR LAP - BARREL

- #4 1'-4"
- #5 1'-8"
- #6 2'-0"

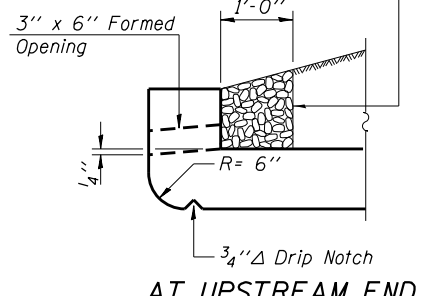
Note: All bar spacings shown are at right angles to bars.

ELEVATION
(Looking South)

WING WALL REINFORCEMENT FRONT FACE

(See Sheet 6 of 11 for Reinf. in Back Face & Footing)

Coarse aggregate to be placed full length of all drained headwalls by Grading Contractor. Cost included with Concrete Box Culverts.



DRAIN DETAILS

BILL OF MATERIAL - STAGE II (SOUTHBOUND)

Bar No.	Size	Length	Shape	Bar No.	Size	Length	Shape
a	128	#6	26'-5"	s1	24	#4	4'-9"
a1	157	#7	12'-0"	s2	24	#4	5'-0"
a2	88	#4	7'-6"	t	80	#4	6'-9"
d	35	#4	5'-6"	v	201	#5	8'-0"
h2	9	#6	25'-0"	v1	201	#5	3'-0"
h5	2	#6	24'-8"	v2	4	#5	8'-9"
h6	18	#4	17'-2"	v3	4	#5	6'-3"
h7	18	#4	9'-8"	v4	9	#5	7'-6"
h8	88	#5	25'-9"	v5	10	#5	9'-3"
h9	142	#6	26'-3"	v6	9	#5	10'-6"
n(E)	28	#6	5'-7"	v7	8	#4	11'-9"
n1(E)	26	#5	4'-3"	w	10	#5	17'-2"
				w1	10	#5	9'-8"
Concrete Box Culverts				Cu. Yd. 128.5			
Reinforcement Bars, Epoxy Coated				Pound 350			
Reinforcement Bars				Pound 21,690			
Name Plates				Each 1			
Stone Riprap, Class A4				Sq. Yd. 62			
Filter Fabric				Sq. Yd. 62			

Note: See Sheet 7 of 11 for additional Culvert Details & Bar Bends.

STAGE II CULVERT CONSTRUCTION
SOUTHBOUND LANES
I-57 OVER
DANFORTH TOWNSHIP DRAINAGE DITCH
F.A.I. ROUTE 57
SECTION (38-4)RS-2, (38-4)BR
IROQUOIS COUNTY
STATION 348+54.50
S.N. 038-2021

DESIGNED	S.F.M.
CHECKED	J.A.M.
DRAWN	S.A.P.
CHECKED	S.F.M. & J.A.M.

Note: Bars indicated thus, 22x2-#5 etc. indicates 22 lines of bars with 2 lengths per line.

Computed Maximum Soil Pressure
Under Wingwall Footings = 2,933 p.s.f.