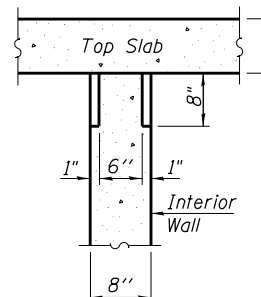
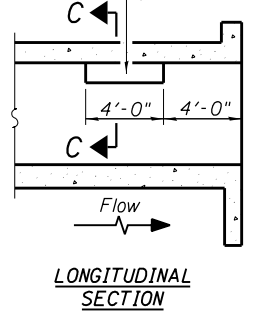


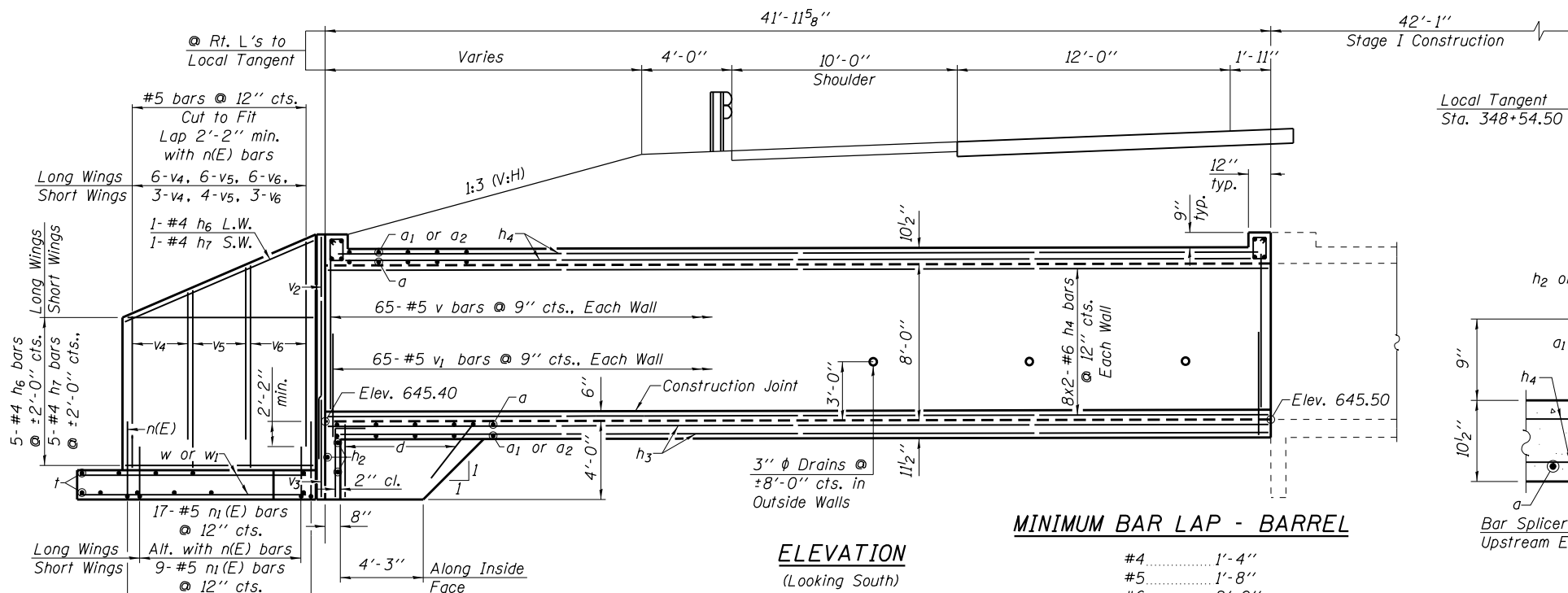
STATE OF ILLINOIS  
DEPARTMENT OF TRANSPORTATION

ROUTE NO.	SECTION	COUNTY	TOTAL SHEETS	SHEET NO.
F.A.I. 57	••	IROQUOIS	190	51
FED. ROAD DIST. NO.	ILLINOIS	CONTRACT NO. 66757		
** (38-4)RS-2, (38-4)BR				
Sheet 6 of 11 Sheets				

Notch formed by rough finished board attached to and removed with form work, center wall. (Do not chamfer).



SECTION C-C  
PHOEBE NESTING  
SITE DETAILS  
(Downstream End Only)

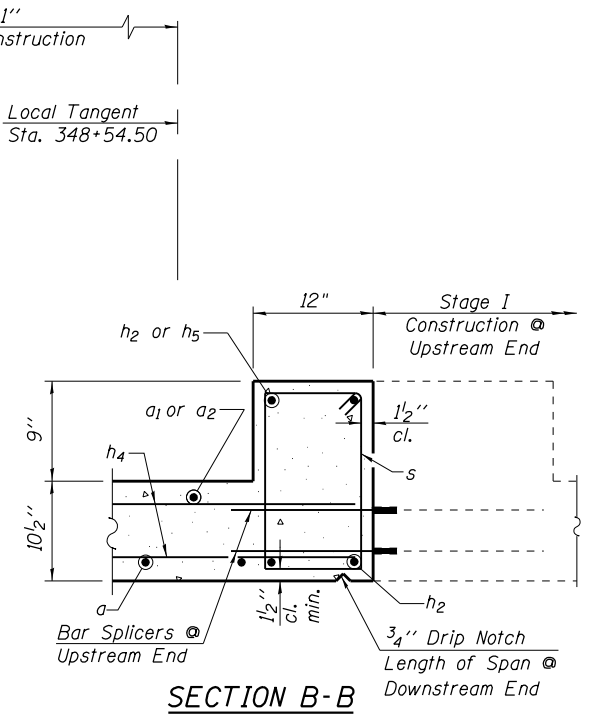


ELEVATION  
(Looking South)

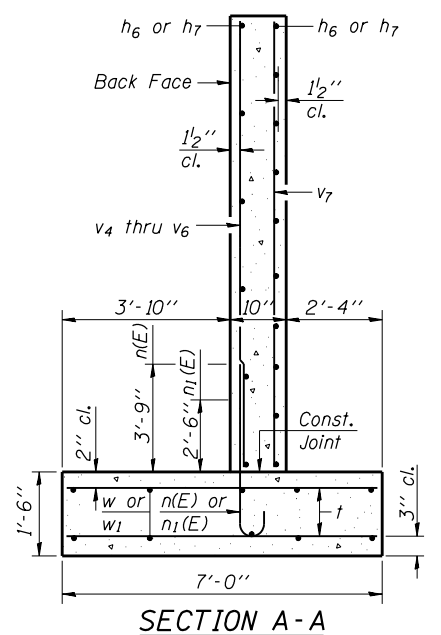
MINIMUM BAR LAP - BARREL

- #4 ..... 1'-4"
- #5 ..... 1'-8"
- #6 ..... 2'-0"

Note: All bar spacings shown are at right angles to bars.



SECTION B-B

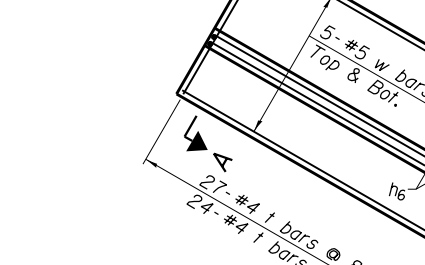


SECTION A-A

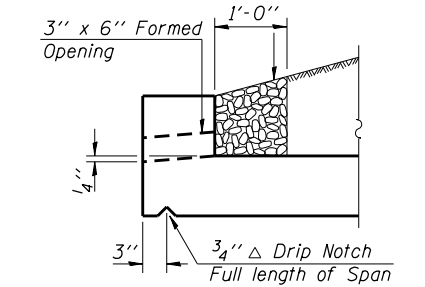
WING WALL REINFORCEMENT  
BACK FACE  
(See Sheet 5 of 11 for Reinf. Front Face)

AT DOWNSTREAM END

DRAIN DETAIL

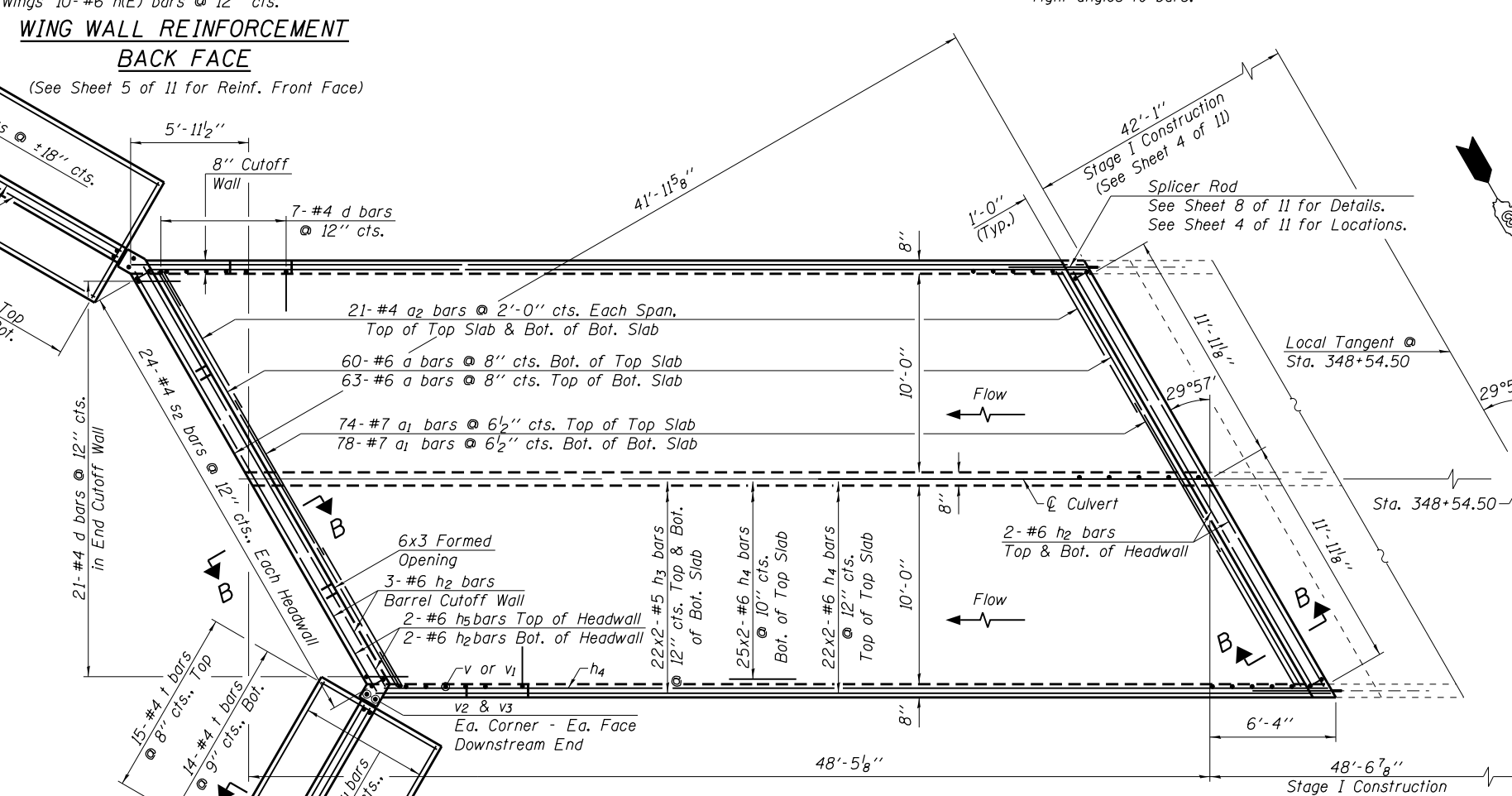


Coarse aggregate to be placed full length of all drained headwalls by Grading Contractor. Cost included with Concrete Box Culverts.



AT DOWNSTREAM END  
DRAIN DETAIL

DESIGNED	S.F.M.
CHECKED	J.A.M.
DRAWN	S.A.P.
CHECKED	S.F.M. & J.A.M.



PLAN

Note: See Sheet 5 of 11 for Wing Wall Dimensions and Offsets.

Computed Maximum Soil Pressure Under Wingwall Footings = 2,933 p.s.f.

Note: Bars indicated thus, 22x2-#5 etc. indicates 22 lines of bars with 2 lengths per line.

BILL OF MATERIAL - STAGE II (NORTHBOUND)

Bar	No.	Size	Length	Shape	Bar	No.	Size	Length	Shape	
a	123	#6	26'-5"	C	s <sub>2</sub>	48	#4	5'-0"	□	
a <sub>1</sub>	152	#7	12'-0"	—						
a <sub>2</sub>	84	#4	7'-6"	—	t	80	#4	6'-9"	—	
d	35	#4	5'-6"	—	v	195	#5	8'-0"	—	
					v <sub>1</sub>	195	#5	3'-0"	—	
					v <sub>2</sub>	4	#5	8'-9"	—	
					v <sub>3</sub>	4	#5	6'-3"	—	
					v <sub>4</sub>	9	#5	7'-6"	—	
					v <sub>5</sub>	10	#5	9'-3"	—	
					v <sub>6</sub>	9	#5	10'-6"	—	
					v <sub>7</sub>	8	#4	11'-9"	—	
n(E)	28	#6	5'-7"	—	w	10	#5	17'-2"	—	
n <sub>1</sub> (E)	26	#5	4'-3"	—	w <sub>1</sub>	10	#5	9'-8"	—	
									Cu. Yd.	124.9
									Pound	350
									Pound	21,060
									Sq. Yd.	62
									Sq. Yd.	62

Note: See Sheet 7 of 11 for additional Culvert Details & Bar Bends.

STAGE II CULVERT CONSTRUCTION  
NORTHBOUND LANES  
I-57 OVER  
DANFORTH TOWNSHIP DRAINAGE DITCH  
F.A.I. ROUTE 57  
SECTION (38-4)RS-2, (38-4)BR  
IROQUOIS COUNTY  
STATION 348+54.50  
S.N. 038-2021