

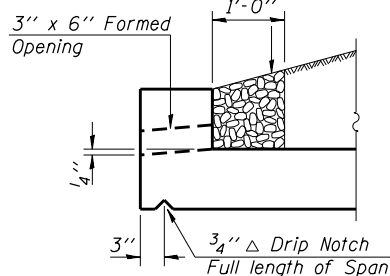
STATE OF ILLINOIS
DEPARTMENT OF TRANSPORTATION

| | | | | |
|---------------------|----------|----------|--------------|-----------|
| ROUTE NO. | SECTION | COUNTY | TOTAL SHEETS | SHEET NO. |
| F.A.I. 57 | •• | IROQUOIS | 190 | 73 |
| FED. ROAD DIST. NO. | ILLINOIS | | | |

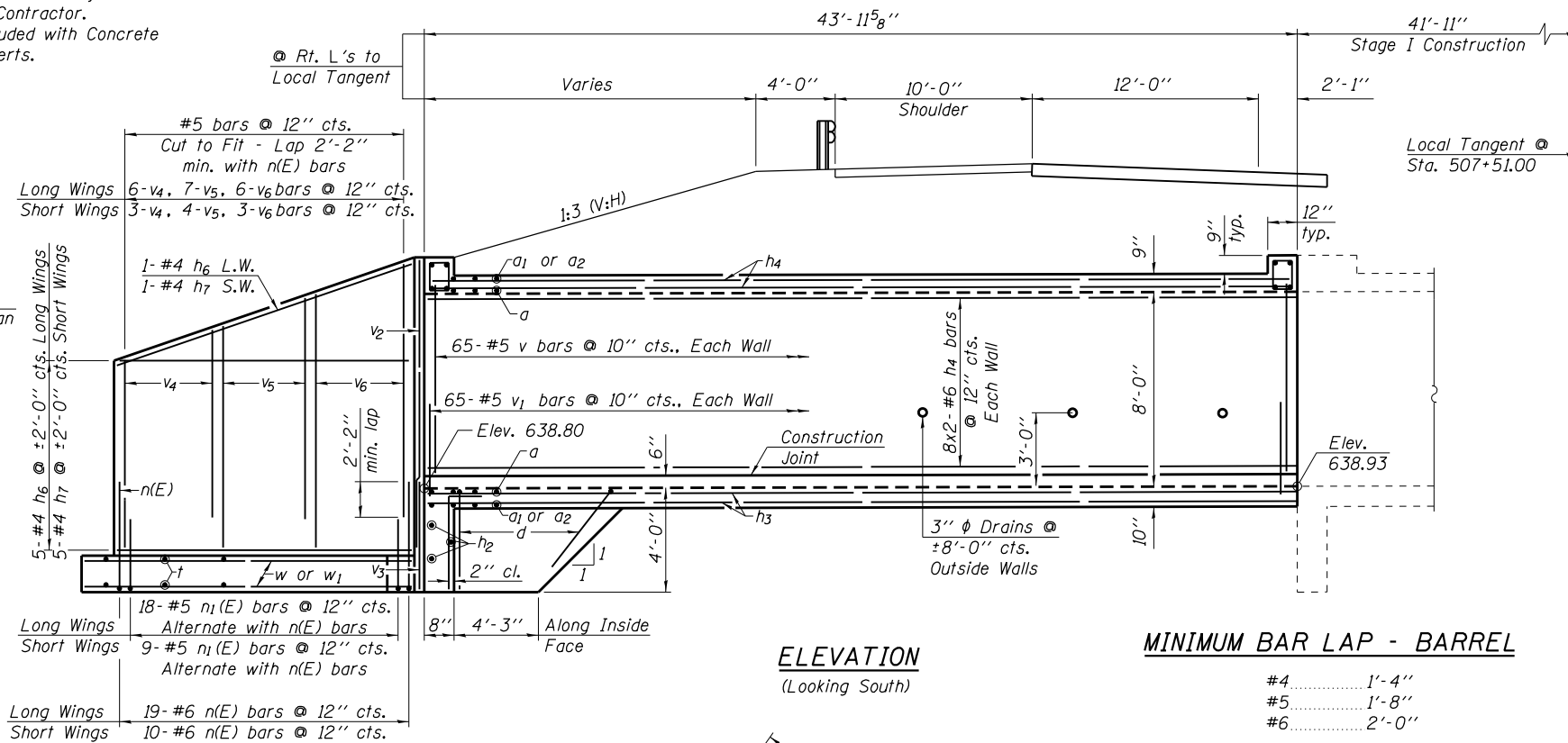
** (38-4)RS-2, (38-4)BR3 CONTRACT NO. 66757

Sheet 6 of 11 Sheets

Coarse aggregate to be placed full length of all drained headwalls by Grading Contractor. Cost included with Concrete Box Culverts.



AT DOWNSTREAM END
DRAIN DETAIL



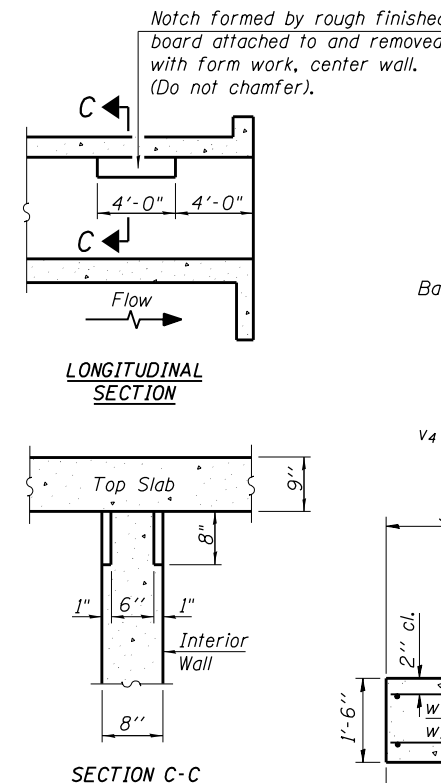
ELEVATION
(Looking South)

MINIMUM BAR LAP - BARREL

- #4 1'-4"
- #5 1'-8"
- #6 2'-0"

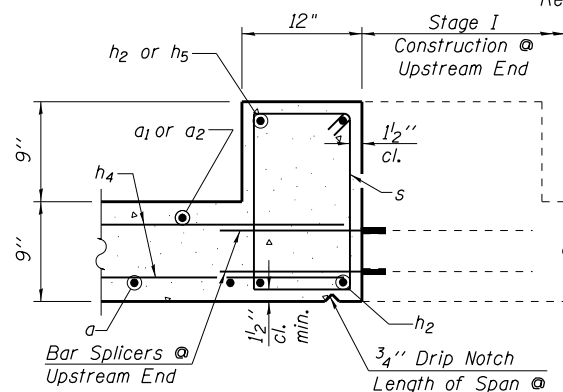
Note: All bar spacings shown are at right angles to bars.

PHOEBE NESTING
SITE DETAILS
(Downstream End Only)



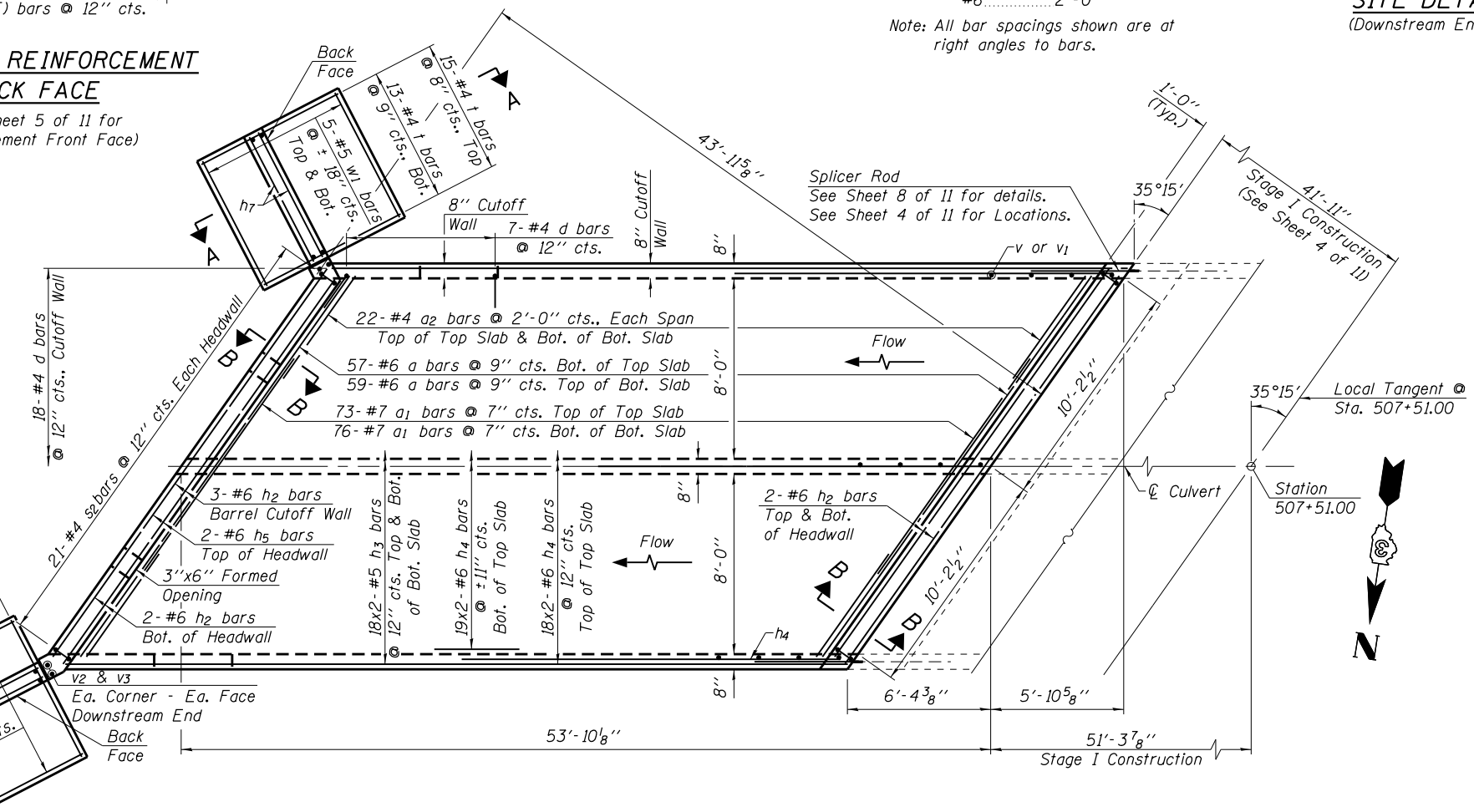
WING WALL REINFORCEMENT
BACK FACE

(See Sheet 5 of 11 for Reinforcement Front Face)



SECTION B-B

Note: See Sheet 5 of 11 for Wing Wall Dimensions and Offsets.



PLAN

Note: Bars indicated thus, 18x2-#5 etc. indicates 18 lines of bars with 2 lengths per line.

BILL OF MATERIAL - STAGE II (NORTHBOUND)

| Bar | No. | Size | Length | Shape | Bar | No. | Size | Length | Shape |
|--------------------|-----|------|--------|-------|----------------|-----|------|--------|-------|
| a | 116 | #6 | 23'-0" | C | s ₂ | 42 | #4 | 4'-9" | □ |
| a ₁ | 149 | #7 | 11'-0" | | | | | | |
| a ₂ | 88 | #4 | 7'-0" | | t | 83 | #4 | 6'-9" | |
| d | 32 | #4 | 5'-6" | | v | 195 | #5 | 8'-0" | |
| | | | | | v ₁ | 195 | #5 | 3'-0" | |
| h ₂ | 9 | #6 | 21'-9" | | v ₂ | 4 | #5 | 8'-6" | |
| h ₃ | 72 | #5 | 27'-9" | | v ₃ | 4 | #5 | 6'-3" | |
| h ₄ | 122 | #6 | 28'-0" | | v ₄ | 9 | #5 | 7'-6" | |
| h ₅ | 2 | #6 | 21'-0" | | v ₅ | 11 | #5 | 8'-9" | |
| h ₆ | 18 | #4 | 18'-8" | | v ₆ | 9 | #5 | 10'-3" | |
| h ₇ | 18 | #4 | 9'-5" | | v ₇ | 8 | #4 | 11'-6" | |
| n(E) | 29 | #6 | 5'-7" | | w | 10 | #5 | 18'-8" | |
| n ₁ (E) | 27 | #5 | 4'-3" | | w ₁ | 10 | #5 | 9'-5" | |

| Concrete Box Culverts | Cu. Yd. | 113.0 |
|----------------------------------|---------|--------|
| Reinforcement Bars, Epoxy Coated | Pound | 360 |
| Reinforcement Bars | Pound | 19,220 |
| Stone Riprap, Class A4 | Sq. Yd. | 54 |
| Filter Fabric | Sq. Yd. | 54 |

Note: See Sheet 7 of 11 for additional Culvert Details & Bar Bends.

STAGE II CULVERT CONSTRUCTION
NORTHBOUND LANES
I-57 OVER
DANFORTH TOWNSHIP DRAINAGE DITCH
F.A.I. ROUTE 57
SECTION (38-4)RS-2, (38-4)BR3
IROQUOIS COUNTY
STATION 507+51.00
S.N. 038-2019

| | |
|----------|-----------------|
| DESIGNED | S.F.M. |
| CHECKED | J.A.M. |
| DRAWN | S.A.P. |
| CHECKED | S.F.M. & J.A.M. |

Computed Maximum Soil Pressure
Under Wingwall Footings = 2,933 p.s.f.