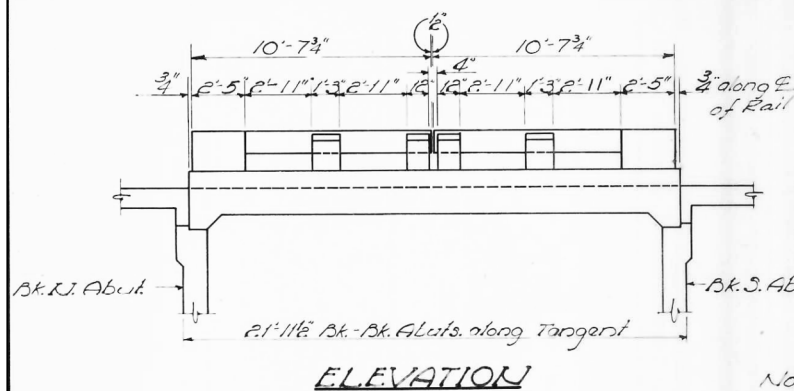


STATE OF ILLINOIS
DEPARTMENT OF PUBLIC WORKS & BUILDINGS
DIVISION OF HIGHWAYS

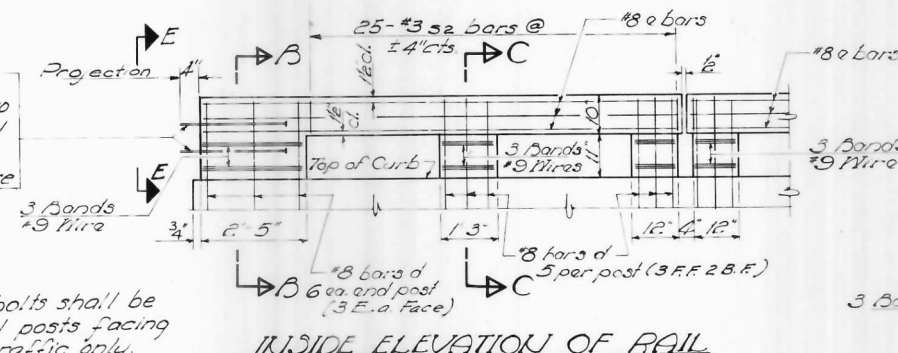
ROUTE NO.	SECTION	COUNTY	TOTAL SHEETS	SHEET NO.
57	4	IROQUOIS	82	28
FED. ROAD DIST. NO. 1 ILLINOIS FED. AID PROJECT				

SHEET NO. 2
4 SHEETS

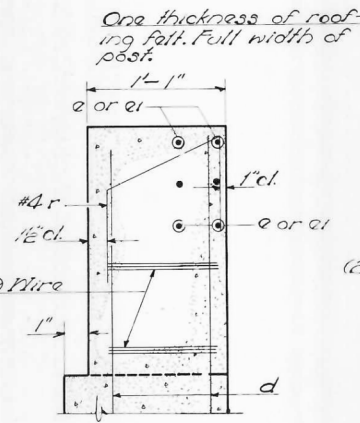
* 38-4, 4B, 4B-1, 4B-2, 4B-3



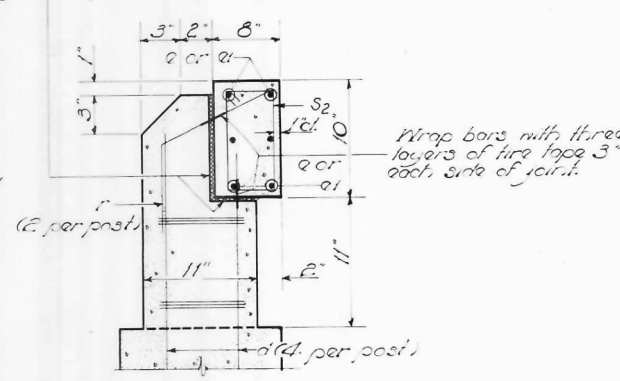
ELEVATION



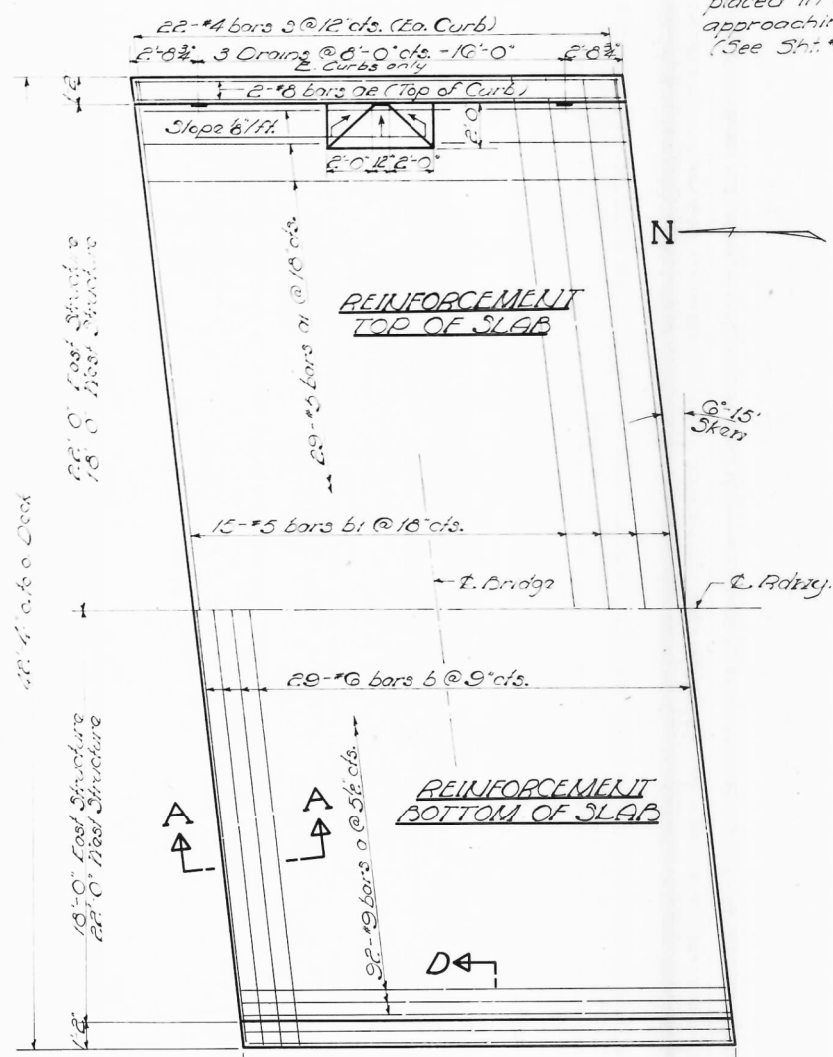
INSIDE ELEVATION OF RAIL



SECTION B-B

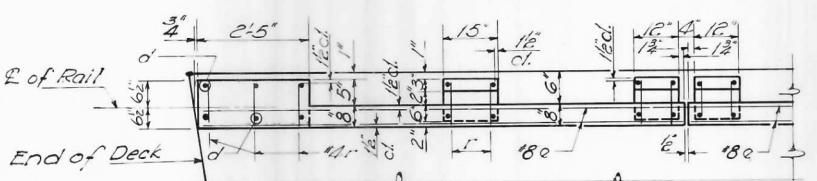


SECTION C-C

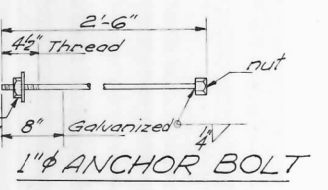


REINFORCEMENT TOP OF SLAB

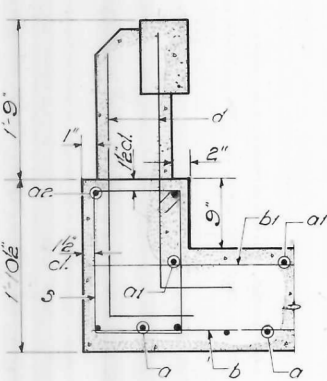
REINFORCEMENT BOTTOM OF SLAB



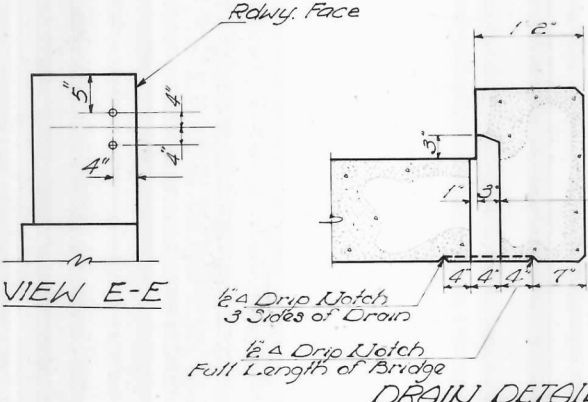
PLAN



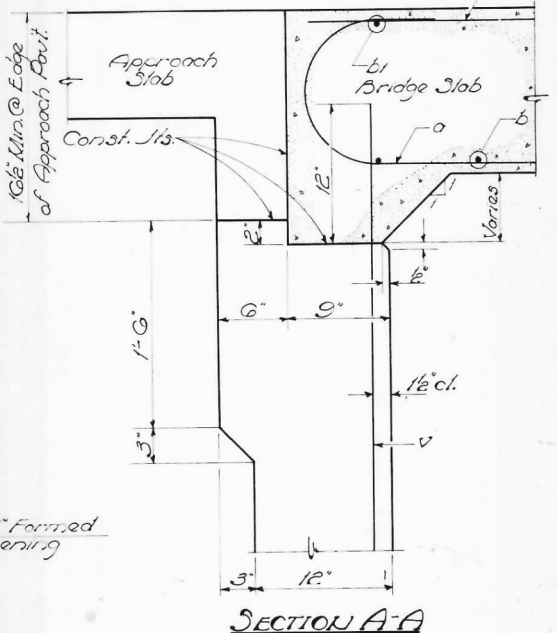
1" ANCHOR BOLT



SECTION D-D



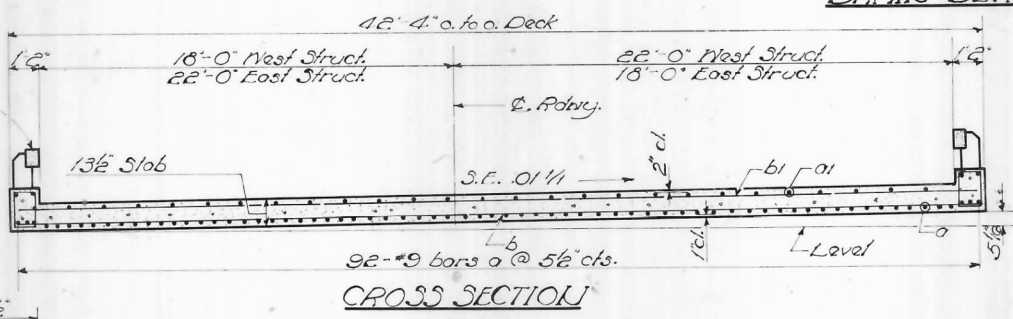
DRAIN DETAIL



SECTION A-A

2 SUPERSTRUCTURES
BILL OF MATERIAL

Bar	No.	Size	Length	Shape
a	164	#9	23'-8"	□
o1	58	#5	21'-3"	□
o2	8	#8	21'-3"	□
b	38	#6	42'-3"	□
b1	30	#5	42'-3"	□
d	128	#8	4'-0"	□
e	48	#8	9'-0"	□
r	56	#3	2'-6"	□
s	88	#4	5'-9"	□
s2	200	#3	2'-11"	□
Reinforcement Bars			Lbs.	24780
Formwork Concrete			Cu. Yds.	3.4
Class X Concrete			Cu. Yds.	82.2



CROSS SECTION

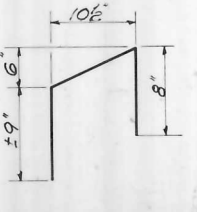
DESIGNED *W. Elson*
CHECKED *C. J. Colwell*
DRAWN *Del. at Jacobs*
CHECKED *C. J. E.*

EXAMINED *W. Braumann*
PASSED *E. Lamb*
APPROVED *V. E. Hoff*

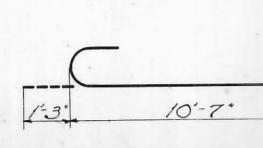
Dec. 10 1962



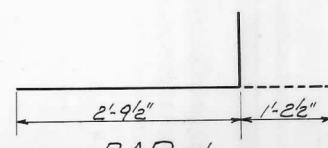
BAR S2



BAR S



BAR o



BAR d

SUPERSTRUCTURE
F.A.I.R.T. 57-SEC. 38-4B-1
IROQUOIS COUNTY
STA. 399+21