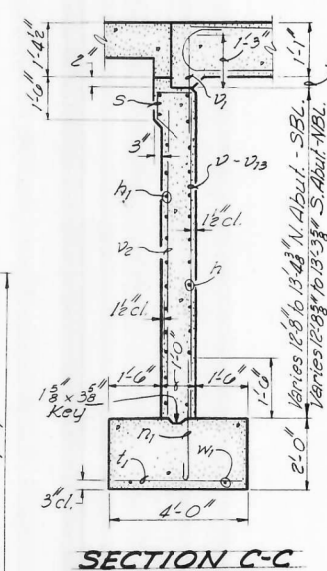
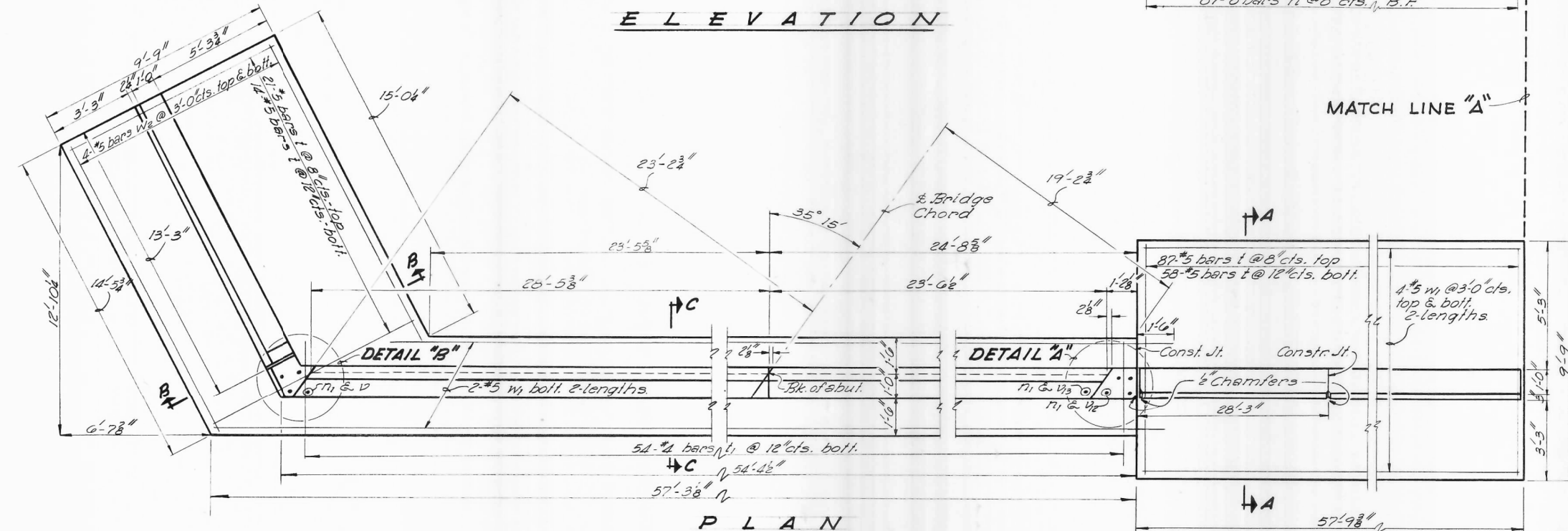
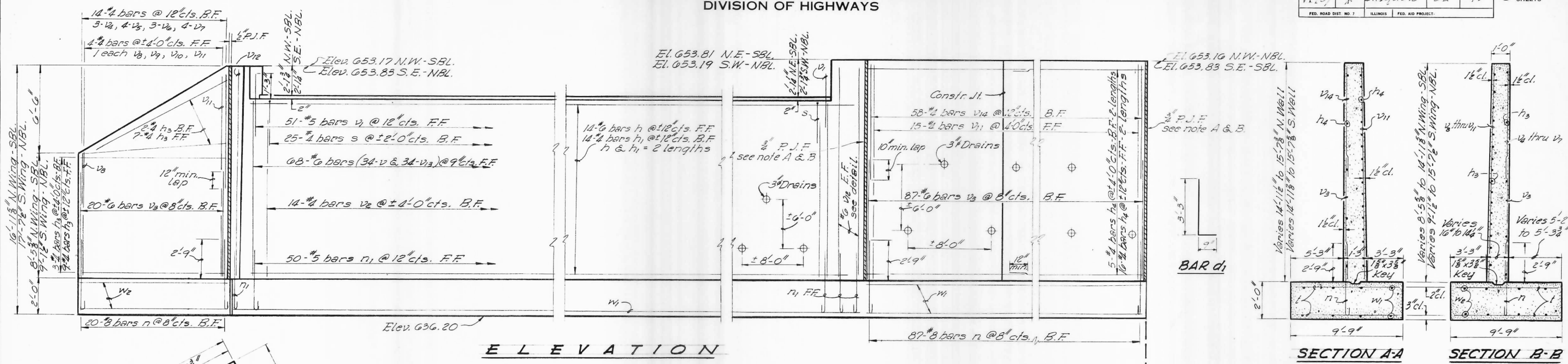


STATE OF ILLINOIS
DEPARTMENT OF PUBLIC WORKS & BUILDINGS
DIVISION OF HIGHWAYS

* 38-4, 4B, 4B-1, 4B-2, 4B-3

ROUTE NO.	SECTION	COUNTY	TOTAL SHEETS	SHEET NO.
57	*	IROQUOIS	82	40
FED. ROAD DIST. NO. 7		ILLINOIS	FED. AID PROJECT	

SHEET NO. 3
5 SHEETS



BAR	No	Size	Length	Shape
h	50	#6	27'-3"	—
h1	50	#4	27'-0"	—
h2	42	#4	13'-0"	—
h4	84	#4	29'-3"	—
n	214	#8	5'-7"	—
n1	100	#5	3'-10"	—
s	50	#4	3'-0"	—
l	360	#5	9'-0"	—
l1	108	#4	3'-9"	—
v	68	#6	12'-0"	—
v1	102	#5	2'-9"	—
v2	28	#4	18'-0"	—
v3	214	#6	7'-3"	—
v4	6	#4	4'-3"	—
v5	8	#4	5'-9"	—
v6	6	#4	7'-0"	—
v7	8	#4	9'-0"	—
v8	2	#4	8'-3"	—
v9	2	#4	10'-3"	—
v10	2	#4	12'-9"	—
v11	32	#4	14'-9"	—
v12	14	#6	14'-9"	—
v13	68	#6	12'-10"	—
v14	110	#4	9'-4"	—
w1	40	#5	29'-9"	—
w2	10	#5	14'-0"	—

BILL OF MATERIAL-SUBST.		
Class X Concrete	Cu. Yds.	431.0
Reinforcement Bars	Lbs.	34,320

SUBSTRUCTURE
F.A.I. ROUTE 57
SEC. 38-4B-3
IROQUOIS COUNTY
STATION 507 ± 51

DESIGNED *Nabi R. Jakrodin*
CHECKED *James J. Harring*
DRAWN *J. Miller* NRF
CHECKED *James J. Harring*

EXAMINED *J. E. Hoff*
PASSED *E. J. Shurt*
APPROVED *J. E. Hoff* CHIEF HIGHWAY ENGINEER

JUL 27 1962

Note: North abutment of south bound lane shown. South abutment of north bound lane similar by rotation of 180°

Note: Contractor shall pour front face of all footings against undisturbed earth as directed by the engineer.

