

STATE OF ILLINOIS
 DEPARTMENT OF TRANSPORTATION
 DIVISION OF HIGHWAYS
**PROPOSED
 HIGHWAY PLANS**

F.A.S. RTE.	SECTION	COUNTY	TOTAL SHEETS	SHEET NO.
253	170,68,68RS-5	LASALLE	30	1
		ILLINOIS	CONTRACT NO. 66A93	

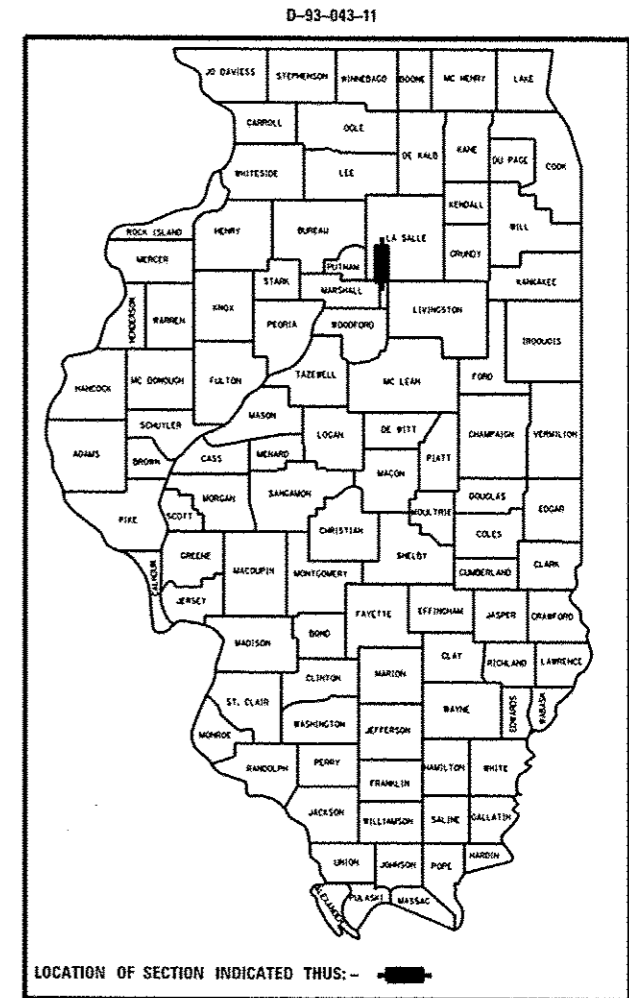
INDEX OF SHEETS

- 1 COVER SHEET
- 2 GENERAL NOTES
- 3-7 SUMMARY OF QUANTITIES
- 8-9 TYPICAL SECTIONS
- 10-14 SCHEDULE OF QUANTITIES
- 15 LOCATION MAP
- 16 PAVEMENT MARKING
- 17-27 DETAILS
- 28-29 SURVEY MONUMENTS
- 30 CROSS SECTIONS

HIGHWAY STANDARDS

- 000001-06 STANDARD SYMBOLS, ABBREVIATIONS AND PATTERNS
- 001006 DECIMAL OF AN INCH AND OF A FOOT
- 406201-01 MAILBOX TURNOUT
- 424001-07 PERPENDICULAR CURB RAMPS FOR SIDEWALKS
- 424006-01 DIAGONAL CURB RAMPS FOR SIDEWALKS
- 424011-01 CORNER PARALLEL CURB RAMPS FOR SIDEWALKS
- 424016-01 MID-BLOCK CURB RAMPS FOR SIDEWALKS
- 424021-02 DEPRESSED CORNER FOR SIDEWALKS
- 424026-01 ENTRANCE / ALLEY PEDESTRIAN CROSSINGS
- 606001-05 CONCRETE CURB TYPE B AND COMBINATION CONCRETE CURB AND GUTTER
- 630001-10 STEEL PLATE BEAM GUARDRAIL
- 630101-09 GUARDRAIL MOUNTED ON EXISTING CULVERTS
- 630201-06 PCC/HMA STABILIZATION AT STEEL PLATE BEAM GUARDRAIL
- 630301-06 SHOULDER WIDENING FOR TYPE I (SPECIAL) GUARDRAIL TERMINALS
- 635006-03 REFLECTOR AND TERMINAL MARKER PLACEMENT
- 635011-02 REFLECTOR MARKER AND MOUNTING DETAILS
- 642001-02 SHOULDER RUMBLE STRIPS, 16 IN
- 642006 SHOULDER RUMBLE STRIPS, 8 IN
- 667101-02 PERMANENT SURVEY MARKERS
- 701001-02 OFF-ROAD OPERATIONS 2L, 2W, MORE THAN 15' (4.5 m) AWAY
- 701006-05 OFF-ROAD OPERATIONS 2L, 2W, 15' (4.5 m) TO 24" (600 mm) FROM
- 701201-04 LANE CLOSURE, 2L, 2W, DAY ONLY
- 701301-04 PAVEMENT EDGE
- 701301-04 LANE CLOSURE, 2L, 2W, SHORT TIME OPERATIONS
- 701306-03 LANE CLOSURE, 2L, 2W, SLOW MOVING OPERATIONS DAY ONLY, FOR SPEEDS ≤ 45 MPH
- 701311-03 LANE CLOSURE, 2L, 2W, MOVING OPERATIONS - DAY ONLY
- 701501-06 URBAN LANE CLOSURE, 2L, 2W, UNDIVIDED
- 701801-05 LANE CLOSURE, MULTILANE 1W OR 2W CROSSWALK OR SIDEWALK CLOSURE
- 701901-03 TRAFFIC CONTROL DEVICES
- 780001-04 TYPICAL PAVEMENT MARKINGS
- 781001-03 TYPICAL APPLICATIONS RAISED REFLECTIVE PAVEMENT MARKERS
- 782001 PRISMATIC CURB REFLECTORS

F.A.S. ROUTE 253 (IL 251)
 SECTION (70,69,68)RS-5
 3P MILLING AND RESURFACING
 WITH ADA RAMPS
 LASALLE COUNTY



MAJOR COLLECTOR RURAL
 2013 ADT = 3200
 PV = 90% SU = 5% MU = 5%

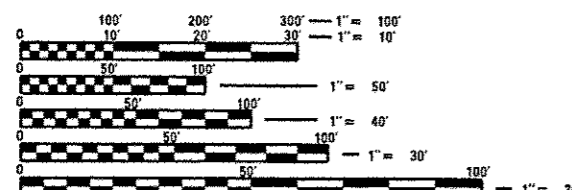
STATE OF ILLINOIS
 DEPARTMENT OF TRANSPORTATION
 DIVISION OF HIGHWAYS

SUBMITTED June 5, 2014
Paul Iseta, P.E.
 DEPUTY DIRECTOR OF HIGHWAYS, REGION ENGINEER

June 27, 2014
John D. Baranzelli, P.E.
 acting ENGINEER OF DESIGN AND ENVIRONMENT

June 27, 2014
Omer Osman, P.E.
 DIRECTOR OF HIGHWAYS, CHIEF ENGINEER

**PRINTED BY THE AUTHORITY
 OF THE STATE OF ILLINOIS**

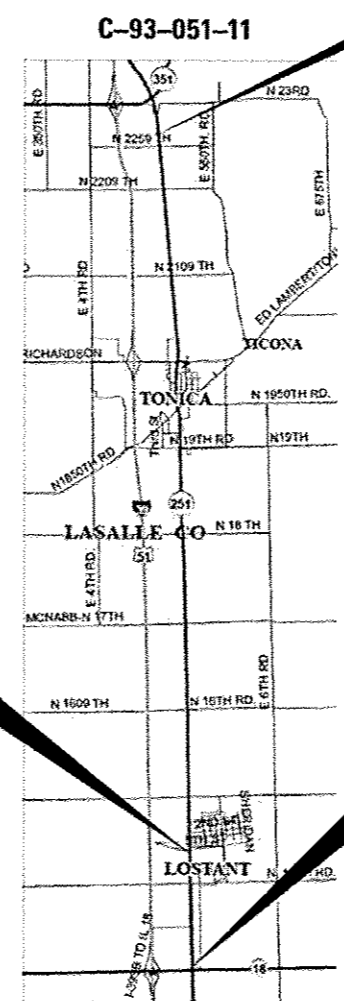


FULL SIZE PLANS HAVE BEEN PREPARED USING STANDARD ENGINEERING SCALES. REDUCED SIZED PLANS WILL NOT CONFORM TO STANDARD SCALES. IN MAKING MEASUREMENTS ON REDUCED PLANS, THE ABOVE SCALES MAY BE USED.

J.U.L.I.E.
 JOINT UTILITY LOCATION INFORMATION FOR EXCAVATION
 1-800-892-0123
 OR 811

PROJECT ENGINEER: CRAIG REED, PE
 SQUAD LEADER: PATRICK BRABOY, PE
 TOWNSHIP(S): LOSTANT, TONICA
 CONTRACT NO. 66A93

END PROJECT
 STA. 773 + 19
 3008' SOUTH OF
 § ILL. 71



RAILROAD OMISSION
 STA. 340 + 10 TO
 STA. 340 + 20

BEGIN PROJECT
 STA. 267 + 00
 123' NORTH OF
 § ILL. 18

GROSS LENGTH = 50,619 FT. = 9.587 MILE
 NET LENGTH = 50,609 FT. = 9.585 MILE