

F.A.P. RTE.	SECTION	COUNTY	TOTAL SHEETS	SHEET NO.
646	(103,104)RS-6	BUREAU	28	1
		ILLINOIS	CONTRACT NO. 66C34	

INDEX OF SHEETS

- 1 COVER SHEET
- 2 GENERAL NOTES
- 3-5 SUMMARY OF QUANTITIES
- 6-7 TYPICAL SECTIONS
- 8-10 SCHEDULE OF QUANTITIES
- 11-25 PLAN VIEWS
- 26-28 DETAILS

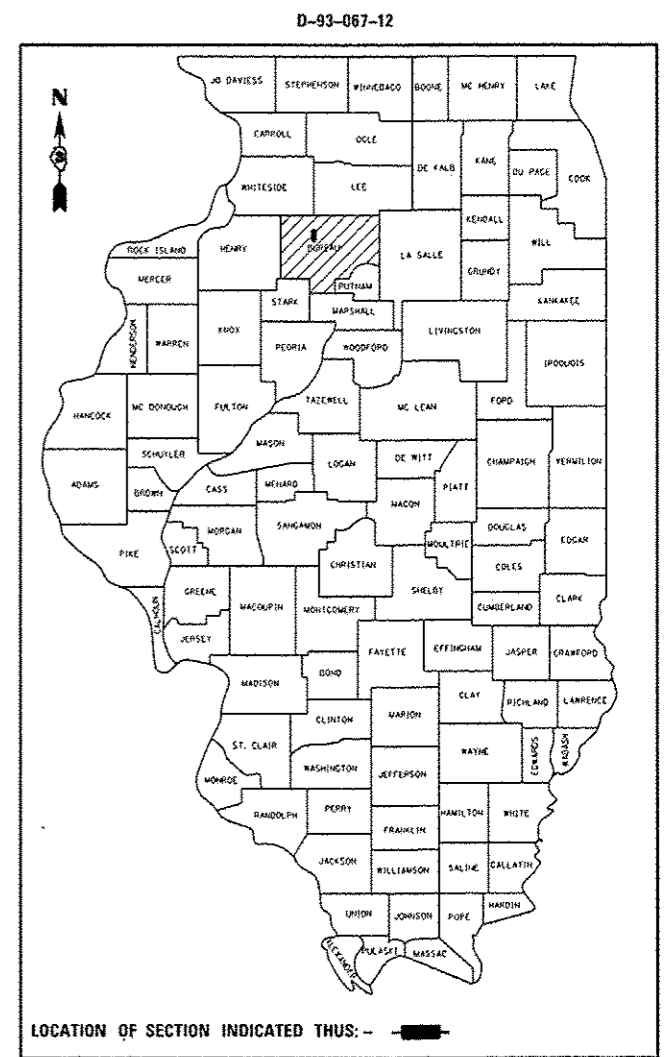
STATE OF ILLINOIS
DEPARTMENT OF TRANSPORTATION
DIVISION OF HIGHWAYS

PROPOSED
HIGHWAY PLANS

FAP ROUTE 646 (IL 40)
SECTION (103,104)RS-6

3P MILLING AND RESURFACING
BUREAU COUNTY

C-93-130-12

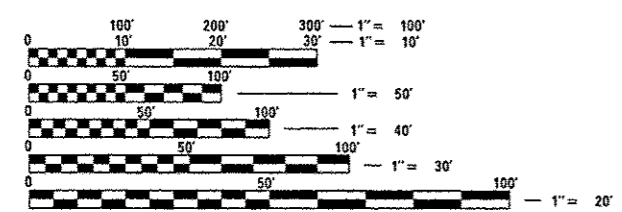


LOCATION OF SECTION INDICATED THUS: - [shaded box]

STANDARDS

- 000001-06 STANDARD SYMBOLS, ABBREVIATIONS AND PATTERNS
- 406201-01 MAILBOX TURNOUT
- 642001-02 SHOULDER RUMBLE STRIPS, 16 INCH
- 667101-02 PERMANENT SURVEY MARKERS
- 701001-02 OFF-ROAD OPERATIONS 2L, 2W, MORE THAN 15' (4.5 m) AWAY
- 701006-05 OFF-ROAD OPERATIONS 2L, 2W, 15' (4.5 m) TO 24" (600 mm) FROM PAVEMENT EDGE
- 701011-04 OFF-ROAD MOVING OPERATIONS 2L, 2W, DAY ONLY
- 701301-04 LANE CLOSURE, 2L, 2W, SHORT TIME OPERATIONS
- 701306-03 LANE CLOSURE, 2L, 2W, SLOW MOVING OPERATIONS DAY ONLY, FOR SPEEDS ≥ 45 MPH
- 701311-03 LANE CLOSURE, 2L, 2W, MOVING OPERATIONS - DAY ONLY
- 701901-03 TRAFFIC CONTROL DEVICES
- 780001-04 TYPICAL PAVEMENT MARKINGS
- 781001-03 TYPICAL APPLICATIONS RAISED REFLECTIVE PAVEMENT MARKERS

MICROFILMED _____
 REEL NUMBER _____
 AWARDED _____
 RESIDENT ENGINEER _____
 AS BUILT CHANGES WERE MADE
 ON THE FOLLOWING SHEETS _____



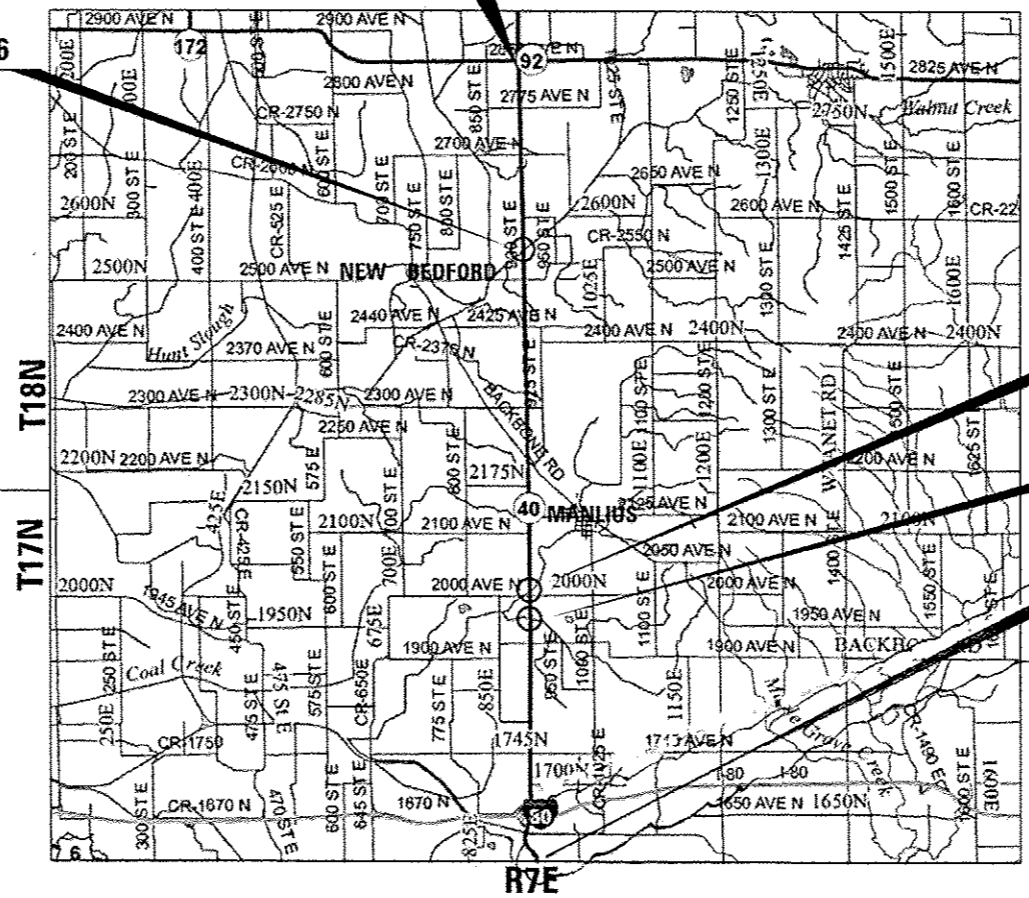
FULL SIZE PLANS HAVE BEEN PREPARED USING STANDARD ENGINEERING SCALES. REDUCED SIZED PLANS WILL NOT CONFORM TO STANDARD SCALES. IN MAKING MEASUREMENTS ON REDUCED PLANS, THE ABOVE SCALES MAY BE USED.

J.U.L.I.E.
 JOINT UTILITY LOCATION INFORMATION FOR EXCAVATION
 1-800-892-0123
 OR 811

PROJECT ENGINEER: CRAIG REED, P.E.
UNIT CHIEF: BRAD DUNCAN, P.E.
TOWNSHIPS: GREENVILLE, MANLIUS
CONTRACT NO. 66C34

BEGIN IMPROVEMENT
STA. 796 + 06

OMIT SN 006-0086
STA. 954 + 04



OMIT SN 006-0156
STA. 1242 + 06

OMIT SN 006-0157
STA. 1266 + 13

END IMPROVEMENT
STA. 1513 + 00

	2013 ADT	PV%	SUZ	MU%
IL 92 TO BACKBONE RD.	1850	76.22	4.86	18.92
BACKBONE RD. TO I-80	2450	60.20	17.35	22.45

STATE OF ILLINOIS
 DEPARTMENT OF TRANSPORTATION
 DIVISION OF HIGHWAYS

SUBMITTED June 6, 2014
Paul Coetzee P.E.
 DEPUTY DIRECTOR OF HIGHWAYS, REGION ENGINEER

June 27, 2014
John D. Baranzelli, P.E.
 ENGINEER OF DESIGN AND ENVIRONMENT

June 27, 2014
Omer Osman, P.E.
 DIRECTOR OF HIGHWAYS, CHIEF ENGINEER

PRINTED BY THE AUTHORITY
OF THE STATE OF ILLINOIS

GROSS LENGTH = 62,394 FT. = 11.82 MILE
 NET LENGTH = 62,032 FT. = 11.75 MILE

NOT TO SCALE

Rev. 7-18-14