

F.A.P. RTE.	SECTION	COUNTY	TOTAL SHEETS	SHEET NO.
646	(103,104)RS-6	BUREAU	28	1
		ILLINOIS	CONTRACT NO. 66C34	

INDEX OF SHEETS

- 1 COVER SHEET
- 2 GENERAL NOTES
- 3-5 SUMMARY OF QUANTITIES
- 6-7 TYPICAL SECTIONS
- 8-10 SCHEDULE OF QUANTITIES
- 11-25 PLAN VIEWS
- 26-28 DETAILS

STATE OF ILLINOIS
DEPARTMENT OF TRANSPORTATION
DIVISION OF HIGHWAYS

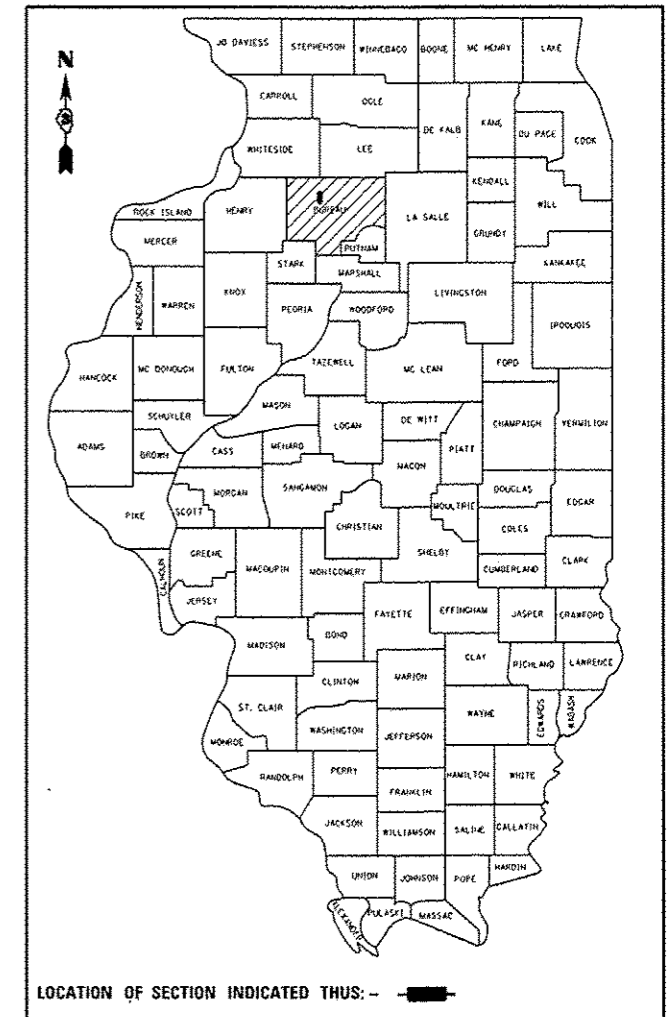
PROPOSED
HIGHWAY PLANS

FAP ROUTE 646 (IL 40)
SECTION (103,104)RS-6

3P MILLING AND RESURFACING
BUREAU COUNTY

C-93-130-12

D-93-067-12

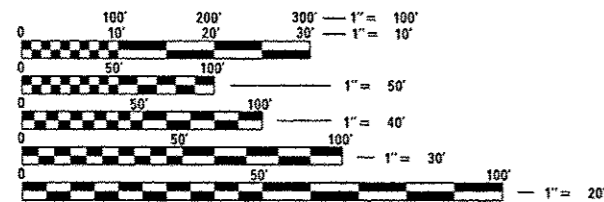


LOCATION OF SECTION INDICATED THUS: - [shaded box]

STANDARDS

000001-06	STANDARD SYMBOLS, ABBREVIATIONS AND PATTERNS
406201-01	MAILBOX TURNOUT
642001-02	SHOULDER RUMBLE STRIPS, 16 INCH
667101-02	PERMANENT SURVEY MARKERS
701001-02	OFF-ROAD OPERATIONS 2L, 2W, MORE THAN 15' (4.5 m) AWAY
701006-05	OFF-ROAD OPERATIONS 2L, 2W, 15' (4.5 m) TO 24" (600 mm) FROM PAVEMENT EDGE
701011-04	OFF-ROAD MOVING OPERATIONS 2L, 2W, DAY ONLY
701301-04	LANE CLOSURE, 2L, 2W, SHORT TIME OPERATIONS
701306-03	LANE CLOSURE, 2L, 2W, SLOW MOVING OPERATIONS DAY ONLY, FOR SPEEDS ≥ 45 MPH
701311-03	LANE CLOSURE, 2L, 2W, MOVING OPERATIONS - DAY ONLY
701901-03	TRAFFIC CONTROL DEVICES
780001-04	TYPICAL PAVEMENT MARKINGS
781001-03	TYPICAL APPLICATIONS RAISED REFLECTIVE PAVEMENT MARKERS

MICROFILMED _____
 REEL NUMBER _____
 AWARDED _____
 RESIDENT ENGINEER _____
 AS BUILT CHANGES WERE MADE
 ON THE FOLLOWING SHEETS _____



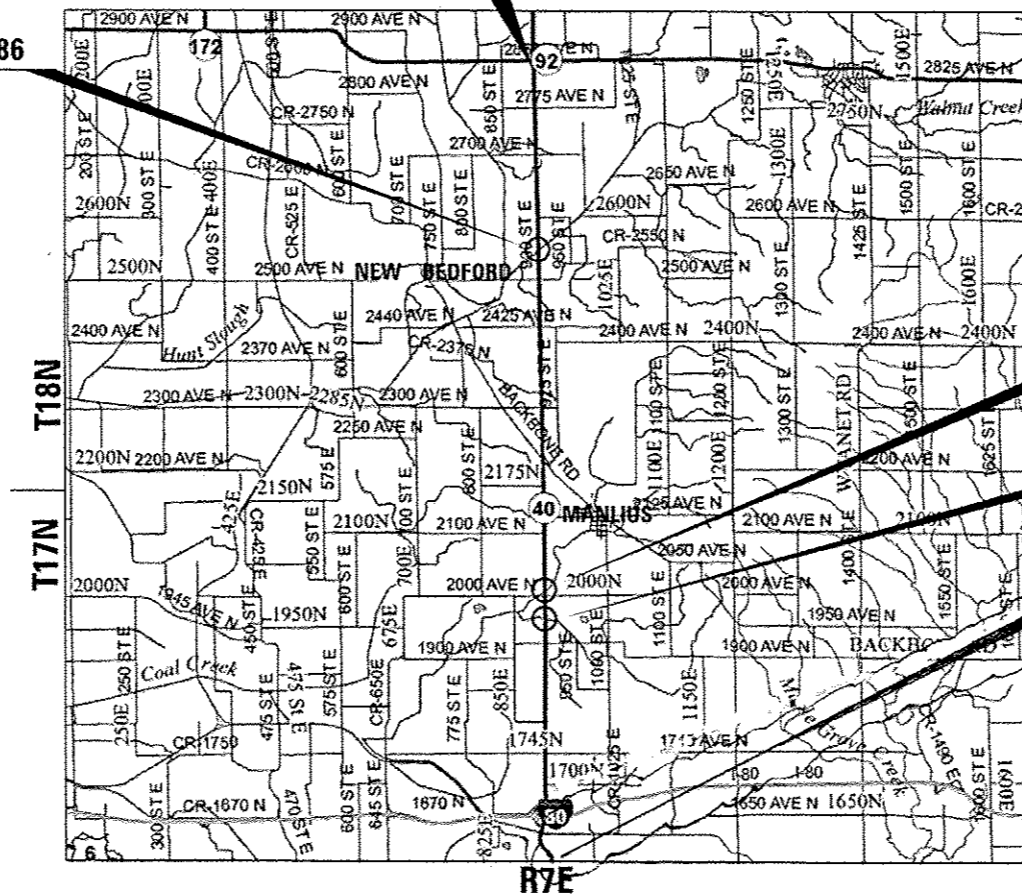
FULL SIZE PLANS HAVE BEEN PREPARED USING STANDARD ENGINEERING SCALES. REDUCED SIZED PLANS WILL NOT CONFORM TO STANDARD SCALES. IN MAKING MEASUREMENTS ON REDUCED PLANS, THE ABOVE SCALES MAY BE USED.

J.U.L.I.E.
 JOINT UTILITY LOCATION INFORMATION FOR EXCAVATION
 1-800-892-0123
 OR 811

PROJECT ENGINEER: CRAIG REED, P.E.
UNIT CHIEF: BRAD DUNCAN, P.E.
TOWNSHIPS: GREENVILLE, MANLIUS
CONTRACT NO. 66C34

BEGIN IMPROVEMENT
STA. 796 + 06

OMIT SN 006-0086
STA. 954 + 04



OMIT SN 006-0156
STA. 1242 + 06

OMIT SN 006-0157
STA. 1266 + 13

END IMPROVEMENT
STA. 1513 + 00

	2013 ADT	PV%	SUZ	MU%
IL 92 TO BACKBONE RD.	1850	76.22	4.86	18.92
BACKBONE RD. TO I-80	2450	60.20	17.35	22.45

STATE OF ILLINOIS
 DEPARTMENT OF TRANSPORTATION
 DIVISION OF HIGHWAYS

SUBMITTED June 6, 2014
Paul Coetzee P.E.
 DEPUTY DIRECTOR OF HIGHWAYS, REGION ENGINEER

June 27, 2014
John D. Baranzelli, P.E.
 ENGINEER OF DESIGN AND ENVIRONMENT

June 27, 2014
Omer Osman, P.E.
 DIRECTOR OF HIGHWAYS, CHIEF ENGINEER

PRINTED BY THE AUTHORITY
OF THE STATE OF ILLINOIS

GROSS LENGTH = 62,394 FT. = 11.82 MILE
 NET LENGTH = 62,032 FT. = 11.75 MILE

NOT TO SCALE

Rev. 7-18-14

CODE NO.	ITEM	UNIT	TOTAL QUANTITY	CONSTR. CODE	
				100% STATE ROADWAY	0005 RURAL
20400800	FURNISHED EXCAVATION	CU YD	31		31
25000200	SEEDING, CLASS 2	ACRE	0.11		0.11
25000400	NITROGEN FERTILIZER NUTRIENT	POUND	10		10
25000500	PHOSPHORUS FERTILIZER NUTRIENT	POUND	10		10
25000600	POTASSIUM FERTILIZER NUTRIENT	POUND	10		10
25100630	EROSION CONTROL BLANKET	SD YD	551		551
40200800	AGGREGATE SURFACE COURSE, TYPE B	TON	65		65
40600400	MIXTURE FOR CRACKS, JOINTS, AND FLANGWAYS	TON	67		67
40600990	TEMPORARY RAMP	SD YD	615	615	615
40600527	LEVELING BINDER (HAND METHOD), IL-9.5FG, N50	TON	112		112
40600627	LEVELING BINDER (MACHINE METHOD), IL-9.5FG, N50	TON	9445	9445	9445
40603310	HOT-MIX ASPHALT SURFACE COURSE, MIX "C", N50	TON	18,889	18,889	18,889
40800050	INCIDENTAL HOT-MIX ASPHALT SURFACING	TON	489		489
44000158	HOT-MIX ASPHALT SURFACE REMOVAL, 2 1/4"	SD YD	227951		227951

14

△ SPECIALTY ITEMS

△ Rev. 7-18-14

FILE NAME :	USER NAME = duncanbd	DESIGNED -	REVISED -	STATE OF ILLINOIS DEPARTMENT OF TRANSPORTATION	SUMMARY OF QUANTITIES			F.A.P. RTE.	SECTION	COUNTY	TOTAL SHEETS	SHEET NO.
c:\p\work\p\dot\duncanbd\0304116\0304116-500.dgn		DRAWN -	REVISED -		646	(103,104)RS-6	BUREAU	28	3			
PLOT SCALE = 100.0000 / 1" = 100'		CHECKED -	REVISED -		SCALE: SHEET OF SHEETS STA. TO STA.			CONTRACT NO. 66C34				
PLOT DATE = 6/6/2014		DATE -	REVISED -		ILLINOIS FED. AID PROJECT							

1033 01 14

CODE NO.	ITEM	UNIT	TOTAL QUANTITY	CONSTR. CODE	
				100% STATE ROADWAY	
				0005	RURAL
△ 78008210	POLYUREA PAVEMENT MARKING TYPE I - LINE 4"	FOOT	144031	144031	
△ 78008230	POLYUREA PAVEMENT MARKING TYPE I - LINE 6"	FOOT	15384	15384	
△ 78008240	POLYUREA PAVEMENT MARKING TYPE I - LINE 8"	FOOT	727	727	
△ 78008250	POLYUREA PAVEMENT MARKING TYPE I - LINE 12"	FOOT	780	780	
△ 78008270	POLYUREA PAVEMENT MARKING TYPE I - LINE 24"	FOOT	55	55	
△ 78100100	RAISED REFLECTIVE PAVEMENT MARKER	EACH	809	809	
78300200	RAISED REFLECTIVE PAVEMENT MARKER REMOVAL	EACH	809	809	
X4060110	BITUMINOUS MATERIALS (PRIME COAT)	POUND	155,964	155,964	△
Z0030850	TEMPORARY INFORMATION SIGNING	SQ FT	42	42	
Z0034105	MATERIAL TRANSFER DEVICE	TON	18,889	18,889	△

△ SPECIALTY ITEMS

FILE NAME =	USER NAME = dunoanbd	DESIGNED -	REVISED -
c:\p\work\p\dot\dunoanbd\0304146-0366034-shl-300.dgn		DRAWN -	REVISED -
Default	PLOT SCALE = 100.0000 1/16"	CHECKED -	REVISED -
	PLOT DATE = 6/6/2014	DATE -	REVISED -

**STATE OF ILLINOIS
DEPARTMENT OF TRANSPORTATION**

SUMMARY OF QUANTITIES

SCALE: SHEET OF SHEETS STA. TO STA.

F.A.P. RTE.	SECTION	COUNTY	TOTAL SHEETS	SHEET NO.
646	(103,104)RS-6	BUREAU	28	5
CONTRACT NO. 66C34			ILLINOIS FED. AID PROJECT	

△ Rev. 7-18-14

MAINLINE PAVING SCHEDULE

STA. TO STA.	LENGTH	MAINLINE		HMA	HMA SURF	LEV BIND	BIT MAT	MIX JTS	LEV BIND	AGG	TEMP
		WIDTH	AREA	SURF REM	CSE MIX C	(MM) IL-9.5FG	PRIME	CRACKS. & FLANGEWAYS	(HM) IL-9.5FG	WEDGE SHLDS B	RAMP
	FT	FT	SO YD	2 1/4" SO YD	N50 TON	N50 TON	COAT POUND	TON	N50 TON	TON	SO YD
796+06 - 800+83	477	52	2756.0	2756.0	231.50	115.75	1860.30	0.83	1.38	13.58	20.00
800+83 - 850+83	5000	32	17777.8	17777.8	1493.33	746.67	12000.00	5.33	8.89	142.36	
850+83 - 954+04	10322	32	36700.0	36700.0	3082.80	1541.40	24772.49	11.01	18.35	293.89	20.00
954+04 - 955+08	103	SN 006-0086 OMISSION									
955+08 - 1170+68	21560	32	76656.9	76656.9	6439.18	3219.59	51743.40	23.00	38.33	613.86	20.00
1170+68 - 1187+89	1721	46	8796.2	8796.2	738.88	369.44	5937.45	2.64	4.40	45.40	
1187+89 - 1242+06	5417	32	19260.4	19260.4	1617.88	808.94	13000.80	5.78	9.63	154.23	20.00
1242+06 - 1243+40	134	SN 006-0156 OMISSION									
1243+40 - 1266+13	2273	32	8081.8	8081.8	678.87	339.43	5455.20	2.42	4.04	64.72	40.00
1266+13 - 1267+38	125	SN 006-0157 OMISSION									
1267+38 - 1420+00	15262	32	54264.9	54264.9	4558.25	2279.13	36628.80	16.28	27.13	434.54	40.00
ROAD REPAIR SOUTH OF I-80	200	26	577.8	577.8	48.53	24.27	390.00	0.17	0.29		80.00
TOTAL			224871.8	224872	18889	9445	151788	67	112	1763	240

FOLDER 40-3 ILL RTE 40 I-80 TO IL 92				CONTRACT NO. 66C34		
GPS POINT NUMBER OR INDEX NUMBER	DESCRIPTION	EXISTING MONUMENT TYPE	PROPOSED MONUMENT TYPE	BUREAU CO. MONUMENT RECORD TO BE RECORDED	RESPONSIBILITY	
40022	NE COR SEC 9-16-7E	PLUG HOLE	TYPE 1	YES	1	
40029	SW COR SEC 22-17-7E	PK NAIL	TYPE 1	YES	1	
40030	E OTR COR SEC 21-17-7E	SURVEY NAIL	TYPE 1	YES	1	
40031	SE COR SEC 16-17-7E	PK NAIL	TYPE 1	YES	1	
40032	E OTR COR SEC 16-17-7E		TYPE 1	YES	1	
40032A	NE COR OF SE OTR OF NE OTR SEC 16-17-7E IN GRAVEL SHOULDER. ONLY NEEDED IF ADDING ASPHALT SHOULDER	ROD	TYPE 1	YES	1	
40034	W OTR COR SEC 10-17-7E	SURVEY NAIL	TYPE 1	YES	1	
40035	NE COR SEC 9-17-7E		TYPE 1	YES	1	
40039	E OTR COR SEC 33-18-7E		TYPE 1	YES	1	
40039A	NE COR OF SE OTR OF NE OTR SEC 33-18-7E	PK NAIL	TYPE 1	YES	1	
40040	SE COR SEC 28-18-7E	PK NAIL	TYPE 1	YES	1	
40041	E OTR COR SEC 28-18-7E	PK NAIL	TYPE 1	YES	1	
40042	SE COR SEC 21-18-7E	PK NAIL	TYPE 1	YES	1	
40043	E OTR COR SEC 21-18-7E	PK NAIL	TYPE 1	YES	1	
40044	NE COR SEC 21-18-7E	PK NAIL	TYPE 1	YES	1	

THIS NOTE TO BE INCLUDED IN PLANS:
LISTED MONUMENT LOCATIONS HAVE BEEN RECORDED BY GPS. PRE CONSTRUCTION TIES BY THE R.E. ARE NOT REQUIRED.
IF AN UNLISTED MONUMENT IS FOUND, IT MUST BE TIED BY THE R.E. AND BROUGHT TO THE ATTENTION OF THE PLATS AND PLANS MANAGER.
AFTER RESURFACING, THE R.E. IS TO CONTACT THE PLATS AND PLANS MANAGER TO ESTABLISH LOCATIONS FOR PERMANENT SURVEY MARKER CORING.

RESPONSIBILITY:
1) RESIDENT TO RE-ESTABLISH MONUMENT (PAY ITEM REQUIRED. PERMANENT SURVEY MARKER, TYPE 1)
2) PLATS AND PLANS TO RE-ESTABLISH MONUMENT

REV. 7/11/14

FILE NAME *	USER NAME * duncnbd	DESIGNED -	REVISED -	STATE OF ILLINOIS DEPARTMENT OF TRANSPORTATION	SCHEDULE OF QUANTITIES				F.A.P. RTE. 646	SECTION (103,104)RS-6	COUNTY BUREAU	TOTAL SHEETS 28	SHEET NO. 8
c:\pwork\p\dot\duncnbd\0304146\0306C34-akt-schedule.dgn		DRAWN -	REVISED -		SCALE:	SHEET NO.	OF SHEETS	STA.	TO STA.	ILLINOIS FED. AID PROJECT			
		CHECKED -	REVISED -		CONTRACT NO. 66C34								
		DATE -	REVISED -										