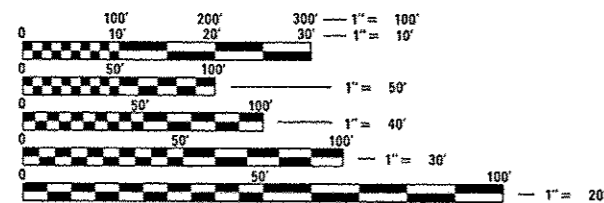


- 1 COVER SHEET
- 2 GENERAL NOTES
- 3-5 SUMMARY OF QUANTITIES
- 6-7 TYPICAL SECTIONS
- 8-10 SCHEDULE OF QUANTITIES
- 11-25 PLAN VIEWS
- 26-28 DETAILS

STANDARDS

- 000001-06 STANDARD SYMBOLS, ABBREVIATIONS AND PATTERNS
- 406201-01 MAILBOX TURNOUT
- 642001-02 SHOULDER RUMBLE STRIPS, 16 INCH
- 667101-02 PERMANENT SURVEY MARKERS
- 701001-02 OFF-ROAD OPERATIONS 2L, 2W, MORE THAN 15' (4.5 m) AWAY
- 701006-05 OFF-ROAD OPERATIONS 2L, 2W, 15' (4.5 m) TO 24" (600 mm) FROM PAVEMENT EDGE
- 701011-04 OFF-ROAD MOVING OPERATIONS 2L, 2W, DAY ONLY
- 701301-04 LANE CLOSURE, 2L, 2W, SHORT TIME OPERATIONS
- 701306-03 LANE CLOSURE, 2L, 2W, SLOW MOVING OPERATIONS DAY ONLY, FOR SPEEDS ≥ 45 MPH
- 701311-03 LANE CLOSURE, 2L, 2W, MOVING OPERATIONS - DAY ONLY
- 701901-03 TRAFFIC CONTROL DEVICES
- 780001-04 TYPICAL PAVEMENT MARKINGS
- 781001-03 TYPICAL APPLICATIONS RAISED REFLECTIVE PAVEMENT MARKERS

MICROFILMED _____
REEL NUMBER _____
AWARDED _____
RESIDENT ENGINEER _____
AS BUILT CHANGES WERE MADE
ON THE FOLLOWING SHEETS _____



FULL SIZE PLANS HAVE BEEN PREPARED USING STANDARD ENGINEERING SCALES. REDUCED SIZED PLANS WILL NOT CONFORM TO STANDARD SCALES. IN MAKING MEASUREMENTS ON REDUCED PLANS, THE ABOVE SCALES MAY BE USED.

J.U.L.I.E.
JOINT UTILITY LOCATION INFORMATION FOR EXCAVATION
1-800-892-0123
OR 811

PROJECT ENGINEER: CRAIG REED, P.E.
UNIT CHIEF: BRAD DUNCAN, P.E.
TOWNSHIPS: GREENVILLE, MANLIUS
CONTRACT NO. 66C34

STATE OF ILLINOIS
DEPARTMENT OF TRANSPORTATION
DIVISION OF HIGHWAYS
**PROPOSED
HIGHWAY PLANS**

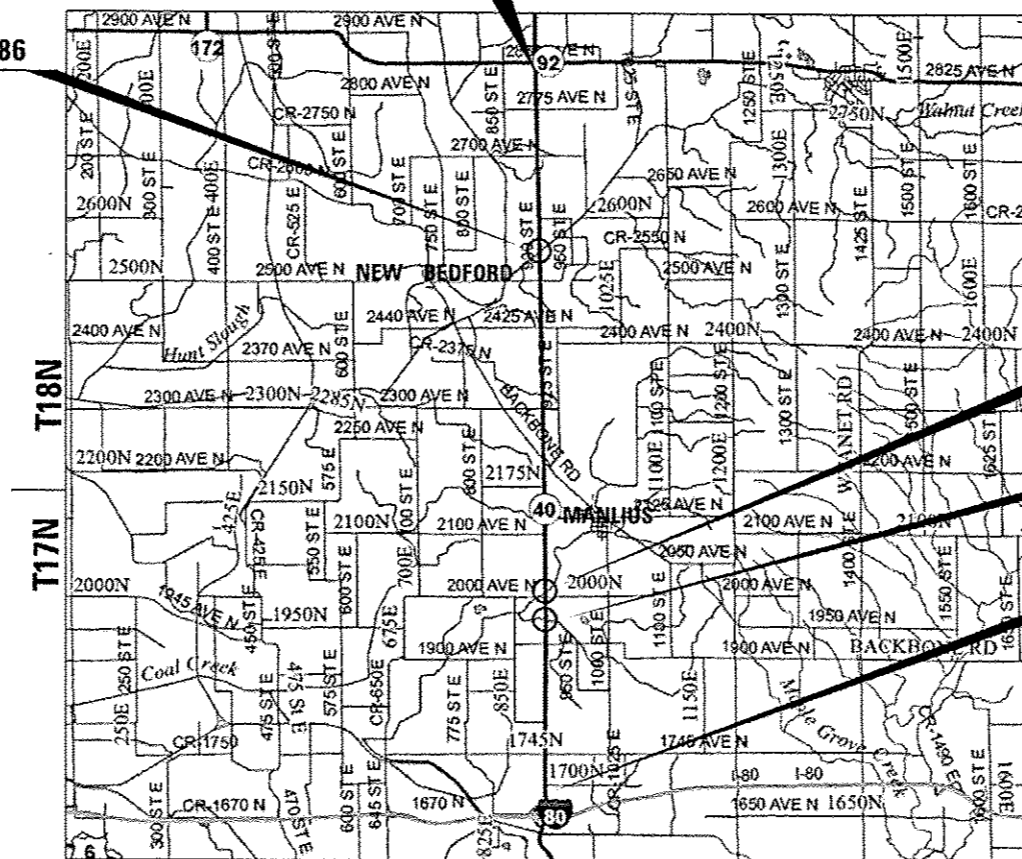
FAP ROUTE 646 (IL 40)
SECTION (103,104)RS-6

3P MILLING AND RESURFACING
BUREAU COUNTY

C-93-130-12

BEGIN IMPROVEMENT
STA. 796 + 06

OMIT SN 006-0086
STA. 954 + 04



OMIT SN 006-0156
STA. 1242 + 06

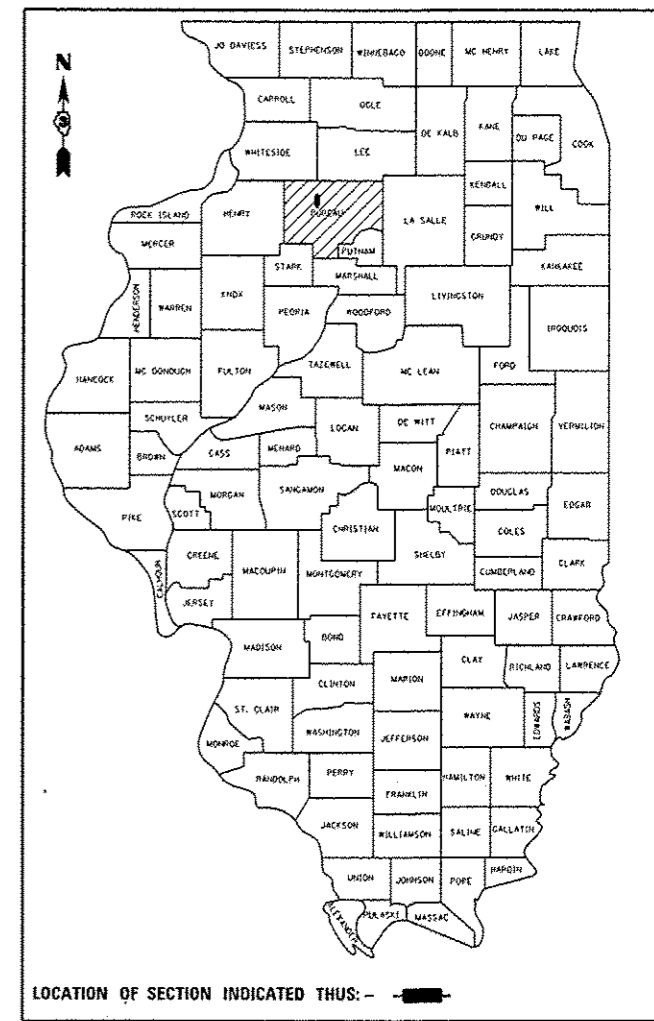
OMIT SN 006-0157
STA. 1266 + 13

END IMPROVEMENT
STA. 1420 + 00

GROSS LENGTH = 62,394 FT. = 11.82 MILE
NET LENGTH = 62,032 FT. = 11.75 MILE
NOT TO SCALE

F.A.P. RTE.	SECTION	COUNTY	TOTAL SHEETS	SHEET NO.
646	(103,104)RS-6	BUREAU	28	1
		ILLINOIS	CONTRACT NO. 66C34	

D-93-067-12



LOCATION OF SECTION INDICATED THUS: - - -

MINOR ARTERIAL (RURAL)

	2013 ADT	PV%	SL%	MU%
IL 92 TO BACKBONE RD.	1850	76.22	4.86	18.92
BACKBONE RD. TO I-80	2450	60.20	17.35	22.45

STATE OF ILLINOIS
DEPARTMENT OF TRANSPORTATION
DIVISION OF HIGHWAYS
SUBMITTED June 6, 2014
Paul Coetzee, P.E.
DEPUTY DIRECTOR OF HIGHWAYS, REGION ENGINEER
June 27, 2014
John D. Baranzelli, P.E.
ENGINEER OF DESIGN AND ENVIRONMENT
June 27, 2014
Omer Osman, P.E.
DIRECTOR OF HIGHWAYS, CHIEF ENGINEER

PRINTED BY THE AUTHORITY
OF THE STATE OF ILLINOIS

GENERAL NOTES

THE THICKNESS OF HMA SHOWN ON THE PLANS IS THE NOMINAL THICKNESS. DEVIATIONS FROM THE NOMINAL THICKNESS WILL BE PERMITTED WHEN SUCH DEVIATIONS OCCUR DUE TO IRREGULARITIES IN THE EXISTING SURFACE OR BASE ON WHICH THE HMA IS PLACED.

THE HMA SURFACE OF ALL MAILBOX TURNOUTS, PRIVATE ENTRANCES, COMMERCIAL ENTRANCES, AND SIDE ROADS SHALL BE MADE NEATLY, IN A WORKMANLIKE MANNER, AND SHALL ACCURATELY CONFORM TO THE SHAPES AND DIMENSIONS SHOWN ON THE PLAN DETAILS. IF REQUIRED BY THE ENGINEER, THE CONTRACTOR SHALL SAW CUT THE HMA SURFACE TO CONFORM TO THE SHAPES AND DIMENSIONS SHOWN ON THE PLAN DETAILS. THIS WORK WILL BE INCLUDED IN THE COST OF THE HMA SURFACE.

THE ENGINEER WILL BE THE SOLE JUDGE CONCERNING CURING TIME FOR THE VARIOUS HMA LIFTS.

SEEDING WILL NOT BE PERMITTED AT ANY TIME WHEN THE GROUND IS FROZEN, WET, OR IN AN UNTILLABLE CONDITION. LOCATIONS TO BE SEEDED WILL BE DETERMINED BY THE ENGINEER.

THE FINISHED EARTHWORK SHALL HAVE A VEGETATION SUSTAINING SOIL COVERING THE TOP FOUR INCHES IN AREAS TO BE SEEDED OR SODDED. THE VEGETATION SUSTAINING SOIL REQUIRED WILL NOT BE PAID FOR SEPARATELY BUT WILL BE INCLUDED IN THE COST OF FURNISHED EXCAVATION.

ON EXISTING PAVEMENT WHICH MAY BE SUPERELEVATED, THE NEW HMA PAVEMENT SHALL BE BUILT WITH THE SAME SUPERELEVATION UNLESS NEW SUPERELEVATION RATES ARE GIVEN ON THE PLANS.

ANY REFERENCE TO A STANDARD IN THESE PLANS SHALL BE INTERPRETED TO MEAN THE EDITION AS INDICATED BY THE SUBNUMBER SHOWN IN THE LIST OF STANDARDS OR THE COPY INCLUDED IN THESE PLANS.

THE FOLLOWING RATES OF APPLICATION HAVE BEEN USED IN CALCULATING PLAN QUANTITIES:

GRANULAR MATERIALS	2.05	TONS / CU YD
HMA RESURFACING	112	LBS / SQ YD / IN
SHORT TERM PAVEMENT MARKING	10	FT /100 FT OF APPLICATION
MIX FOR CRACKS, JTS & FLGWYS	0.0003	TONS / SQ YD
LEVEL BINDER (HAND METHOD)	0.0005	TONS / SQ YD

THE CONTRACTOR SHALL CONTACT JULIE AT LEAST 48 HOURS PRIOR TO EXCAVATION TO DETERMINE WHICH UTILITIES ARE IN THE AREA.

STATE OF ILLINOIS
DEPARTMENT OF TRANSPORTATION
DISTRICT THREE

PREPARED BY: Don Bonvil
DISTRICT STUDIES & PLANS ENGINEER

DATE: 6-6-14

EXAMINED BY: Herbert J. [Signature]
DISTRICT CONSTRUCTION ENGINEER

Wayne L. Phillips [Signature]
DISTRICT MATERIALS ENGINEER

Bruce A. [Signature]
DISTRICT OPERATIONS ENGINEER

FILE NAME *	USER NAME : duncanbd	DESIGNED -	REVISED -	STATE OF ILLINOIS DEPARTMENT OF TRANSPORTATION	GENERAL NOTES	F.A.P. RTE.	SECTION	COUNTY	TOTAL SHEETS	SHEET NO.
c:\p-work\p\dots\duncanbd\0384146\0384146-sh1-cover.dgn	DRAWN -	REVISED -	646			(103,104)RS-6	BUREAU	28	2	
PLOT SCALE * 100.0000' / in.	CHECKED -	REVISED -	CONTRACT NO. 66C34							
PLOT DATE * 6/5/2014	DATE -	REVISED -	[ILLINOIS] FED. AID PROJECT							
					SCALE:	SHEET OF SHEETS		STA.	TO STA.	

CODE NO.	ITEM	UNIT	TOTAL QUANTITY	CONSTR. CODE
				100% STATE ROADWAY 0005 RURAL
20400800	FURNISHED EXCAVATION	CU YD	31	31
25000200	SEEDING, CLASS 2	ACRE	0.11	0.11
25000400	NITROGEN FERTILIZER NUTRIENT	POUND	10	10
25000500	PHOSPHORUS FERTILIZER NUTRIENT	POUND	10	10
25000600	POTASSIUM FERTILIZER NUTRIENT	POUND	10	10
25100630	EROSION CONTROL BLANKET	SQ YD	551	551
40200800	AGGREGATE SURFACE COURSE, TYPE B	TON	65	65
40600400	MIXTURE FOR CRACKS, JOINTS, AND FLANGEWAYS	TON	67	67
40600990	TEMPORARY RAMP	SQ YD	535	535
40600527	LEVELING BINDER (HAND METHOD), IL-9.5FG, N50	TON	112	112
40600627	LEVELING BINDER (MACHINE METHOD), IL-9.5FG, N50	TON	9420	9420
40603310	HOT-MIX ASPHALT SURFACE COURSE, MIX "C", N50	TON	18841	18841
40800050	INCIDENTAL HOT-MIX ASPHALT SURFACING	TON	489	489
44000158	HOT-MIX ASPHALT SURFACE REMOVAL, 2 1/4"	SQ YD	227951	227951

14

△ SPECIALTY ITEMS

FILE NAME : c:\pwork\pedit\duncanbd\0304146\036	USER NAME : duncanbd	DESIGNED -	REVISED -	STATE OF ILLINOIS DEPARTMENT OF TRANSPORTATION	SUMMARY OF QUANTITIES				F.A.P. RTE. 646	SECTION 1103.1041RS-5	COUNTY BUREAU	TOTAL SHEETS 28	SHEET NO. 3
SC34-shc-500.dgn		DRAWN -	REVISED -		SCALE:	SHEET	OF	SHEETS	STA.	TO STA.	CONTRACT NO. 66C34		
PLOT SCALE * 100.0000 / in.		CHECKED -	REVISED -		ILLINOIS FED. AID PROJECT								
Default		DATE -	REVISED -										

CODE NO.	ITEM	UNIT	TOTAL QUANTITY	CONSTR. CODE
				100% STATE ROADWAY
				0005 RURAL
48102100	AGGREGATE WEDGE SHOULDER, TYPE B	TON	1763	1763
64200116	SHOULDER RUMBLE STRIPS, 16 INCH	FOOT	123110	123110
66700205	PERMANENT SURVEY MARKERS, TYPE I	EACH	15	15
67000400	ENGINEER'S FIELD OFFICE, TYPE A	CAL MO	3	3
67100100	MOBILIZATION	L SUM	1	1
70100460	TRAFFIC CONTROL AND PROTECTION, STANDARD 701306	L SUM	1	1
70300100	SHORT TERM PAVEMENT MARKING	FOOT	18669	18669
70300220	TEMPORARY PAVEMENT MARKING - LINE 4"	FOOT	163148	163148
70300240	TEMPORARY PAVEMENT MARKING - LINE 6"	FOOT	30768	30768
70300250	TEMPORARY PAVEMENT MARKING - LINE 8"	FOOT	1454	1454
70300260	TEMPORARY PAVEMENT MARKING - LINE 12"	FOOT	1560	1560
70300280	TEMPORARY PAVEMENT MARKING - LINE 24"	FOOT	26	26
70301000	WORK ZONE PAVEMENT MARKING REMOVAL	SQ FT	6223	6223
△ 78008200	POLYUREA PAVEMENT MARKING TYPE I - LETTERS AND SYMBOLS	SQ FT	93.6	93.6

△
N

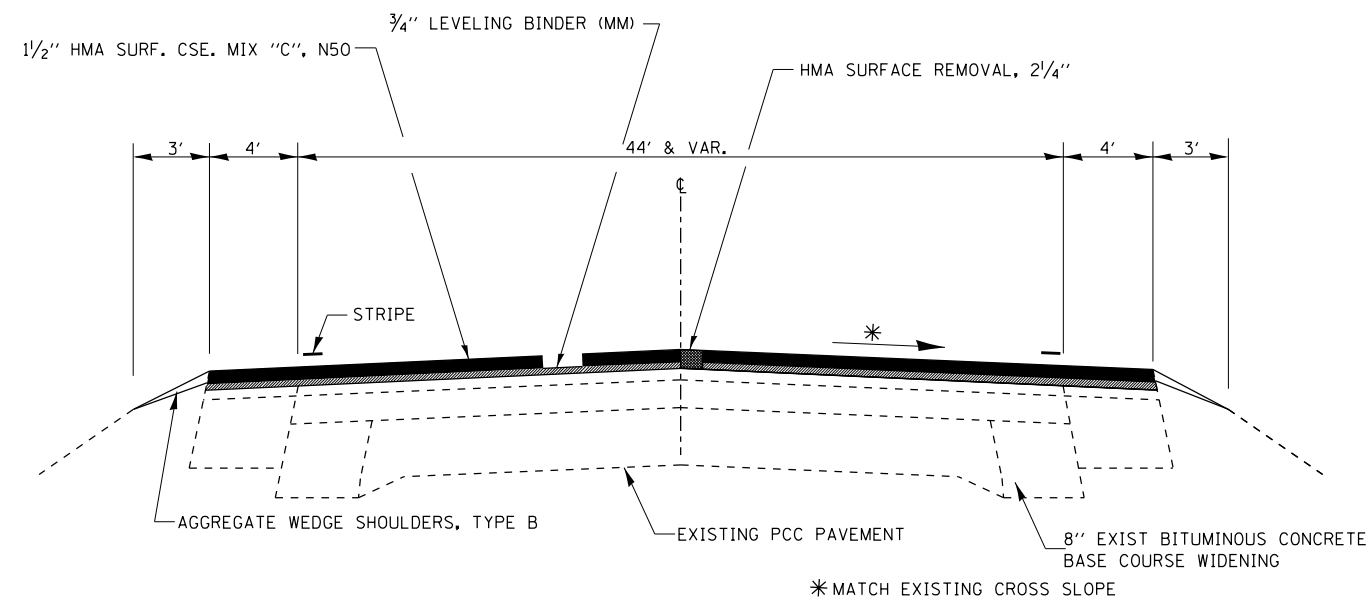
△ SPECIALTY ITEMS

FILE NAME :	USER NAME : dunaebd	DESIGNED -	REVISED -
es:\pwork\p\ridos\dunaebd\0308146\0308146-0308146-0308146.dgn	SC24-akt-500.dgn	DRAWN -	REVISED -
Default	PLOT SCALE = 100.0000 1/16"	CHECKED -	REVISED -
	PLOT DATE = 8/9/2014	DATE -	REVISED -

STATE OF ILLINOIS
DEPARTMENT OF TRANSPORTATION

SUMMARY OF QUANTITIES

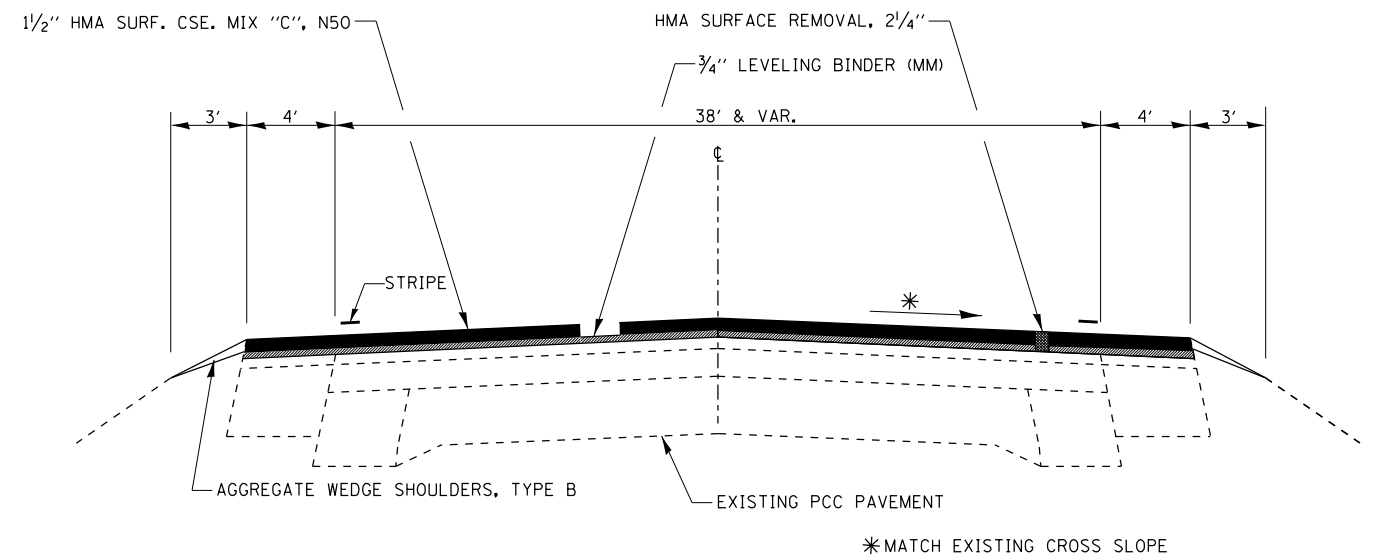
SCALE:	SHEET	OF	SHEETS	STA.	TO	STA.	F.A.P. RTE. 646	SECTION (103,104)RS-6	COUNTY	TOTAL SHEETS 28	SHEET NO. 4
ILLINOIS FED. AID PROJECT											
CONTRACT NO. 66C34											



TYPICAL SECTION 1

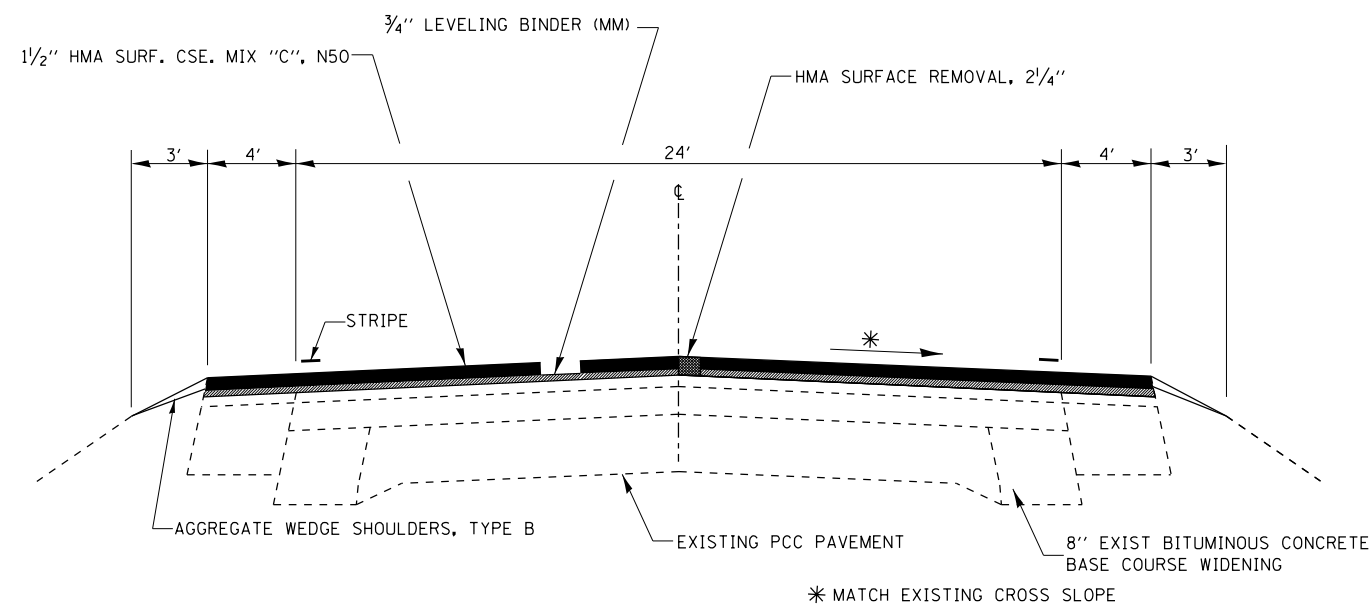
STA. 796+06 TO STA. 800+83

NOTE: 16" RUMBLE STRIP TO BE PLACE ON HMA SHOULDER PER HIGHWAY STANDARD 642001



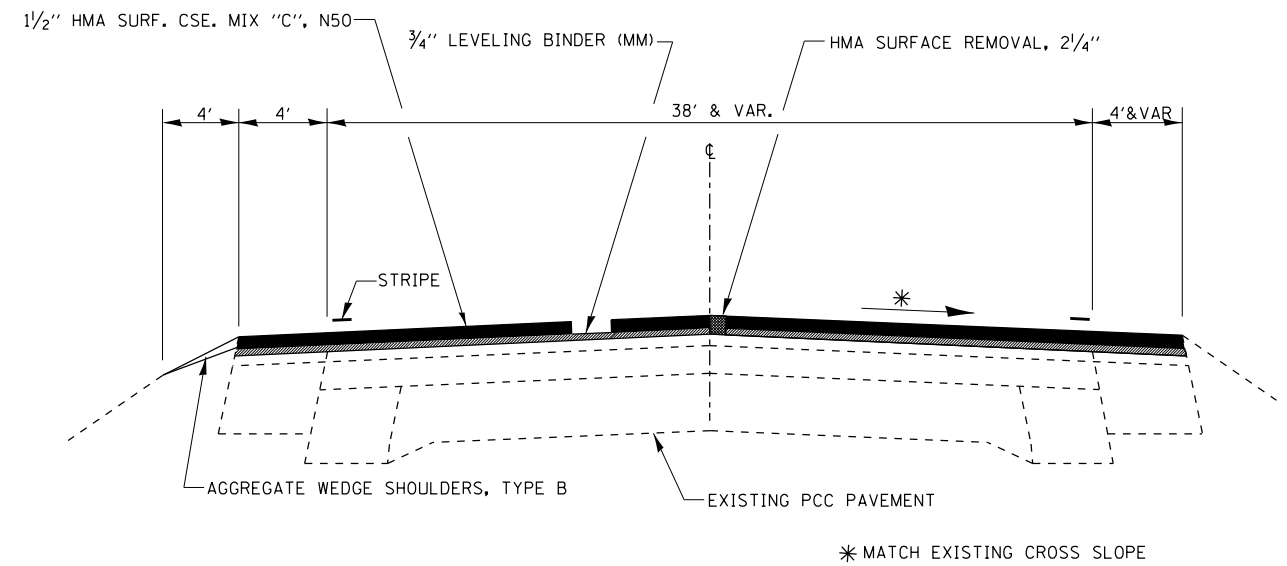
TYPICAL SECTION 3

STA. 1170+68 TO STA. 1179+49



TYPICAL SECTION 2

STA. 800+83 TO STA. 1170+68
STA. 1187+89 TO STA. 1420+00



TYPICAL SECTION 4

STA. 1179+49 TO STA. 1182+29
STA. 1184+82 TO STA. 1187+89

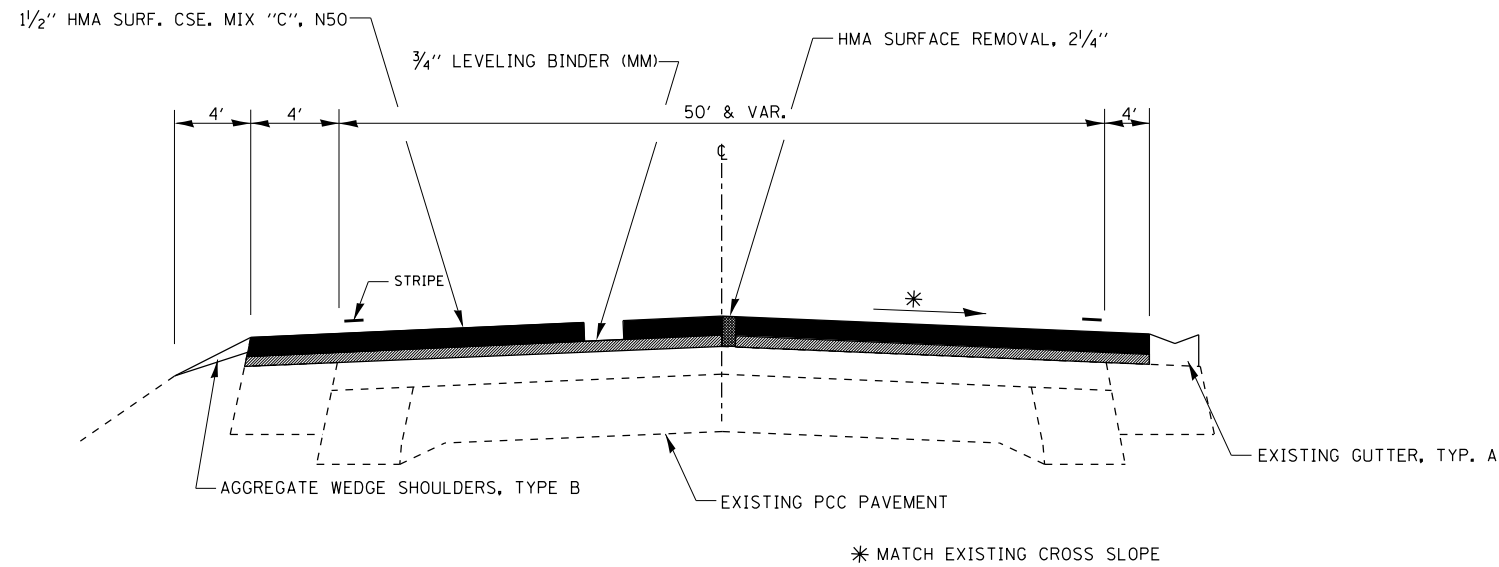
FILE NAME =	USER NAME = duncanbd	DESIGNED -	REVISED -
et:\pw\work\p\idot\duncanbd\0304146\0366\646\34-sht-typical.dgn		DRAWN -	REVISED -
	PLOT SCALE = 100.0000' / 1"	CHECKED -	REVISED -
	PLOT DATE = 6/6/2014	DATE -	REVISED -

STATE OF ILLINOIS
DEPARTMENT OF TRANSPORTATION

TYPICAL SECTIONS

SCALE: SHEET OF SHEETS STA. TO STA.

F.A.P. RTE.	SECTION	COUNTY	TOTAL SHEETS	SHEET NO.
646	(103,104)RS-6	BUREAU	28	6
CONTRACT NO. 66C34				
ILLINOIS FED. AID PROJECT				



TYPICAL SECTION 5

STA. 1182+29 TO STA. 1184+82

MIXTURES TABLE			
	HMA SURFACE	HMA LEVELING BINDER	INCIDENTAL HMA SURFACING
PG GRADE**	PG 64-22	PG 64-22	PG 64-22
DESIGN AIR VOIDS	4.0% @ N50	4.0% @ N50	4.0% @ N50
MIXTURE COMPOSITION	IL 9.5	IL 9.5 FG	IL 9.5
FRICTION AGGREGATE	MIXTURE C		MIXTURE C
DENSITY CONTROL METHOD	CORRELATION	CORRELATION	SATISFACTION OF ENGINEER

** WHEN RAP/RAS ABR EXCEEDS 20 PERCENT, THE HIGH AND LOW VIRGIN ASPHALT BINDER GRADES SHALL EACH BE REDUCED BY ONE GRADE (I.E. 25% ABR WOULD REQUIRE A VIRGIN ASPHALT BINDER GRADE OF PG 64-22 TO BE REDUCED TO PG 58-28)

MAINLINE PAVING SCHEDULE												
STA. TO STA.	LENGTH	MAINLINE		HMA SURF REM	HMA SURF CSE MIX C	LEV BIND (MM) IL-9.5FG	BIT MAT PRIME COAT	MIX JTS CRACKS. & FLANGEWAYS	LEV BIND (HM) IL-9.5FG N50	AGG WEDGE SHLDS B	TEMP RAMP	
		WIDTH	AREA	2 1/4"	N50	N50	TON	TON	TON	TON	TON	SQ YD
		FT	SQ YD	SQ YD	TON	TON	POUND	TON	TON	TON	SQ YD	
796+06 - 800+83	477	52	2756.0	2756.0	231.50	115.75	1860.30	0.83	1.38	13.58	20.00	
800+83 - 850+83	5000	32	17777.8	17777.8	1493.33	746.67	12000.00	5.33	8.89	142.36		
850+83 - 954+04	10322	32	36700.0	36700.0	3082.80	1541.40	24772.49	11.01	18.35	293.89	20.00	
954+04 - 955+08	103	SN 006-0086 OMISSION										
955+08 - 1170+68	21560	32	76656.9	76656.9	6439.18	3219.59	51743.40	23.00	38.33	613.86	20.00	
1170+68 - 1187+89	1721	46	8796.2	8796.2	738.88	369.44	5937.45	2.64	4.40	45.40		
1187+89 - 1242+06	5417	32	19260.4	19260.4	1617.88	808.94	13000.80	5.78	9.63	154.23	20.00	
1242+06 - 1243+40	134	SN 006-0156 OMISSION										
1243+40 - 1266+13	2273	32	8081.8	8081.8	678.87	339.43	5455.20	2.42	4.04	64.72	40.00	
1266+13 - 1267+38	125	SN 006-0157 OMISSION										
1267+38 - 1420+00	15262	32	54264.9	54264.9	4558.25	2279.13	36628.80	16.28	27.13	434.54	40.00	
TOTAL			224294.0	224294	18841	9420	151398	67	112	1763	160	

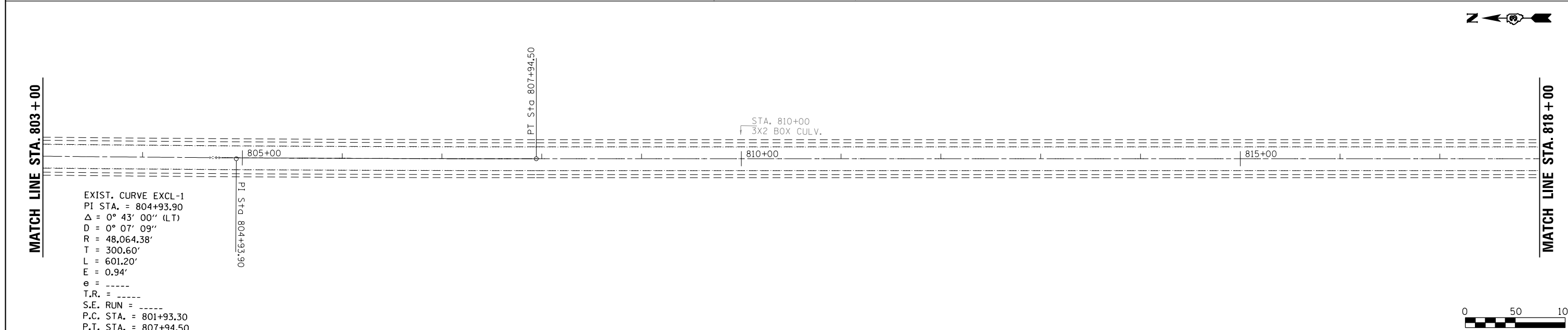
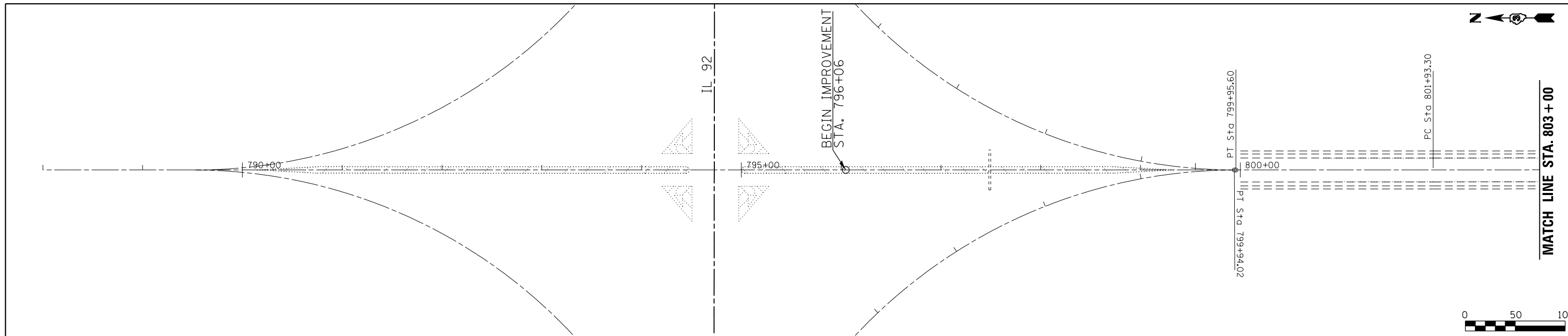
FOLDER 40-3 ILL RTE 40 I-80 TO IL 92					BUREAU CO. CONTRACT NO. 66C34	
GPS POINT NUMBER OR INDEX NUMBER	DESCRIPTION	EXISTING MONUMENT TYPE	PROPOSED MONUMENT TYPE	MONUMENT RECORD TO BE RECORDED	RESPONSIBILITY	
40022	NE COR SEC 9-16-7E	PLUG HOLE	TYPE 1	YES	1	
40029	SW COR SEC 22-17-7E	PK NAIL	TYPE 1	YES	1	
40030	E OTR COR SEC 21-17-7E	SURVEY NAIL	TYPE 1	YES	1	
40031	SE COR SEC 16-17-7E	PK NAIL	TYPE 1	YES	1	
40032	E OTR COR SEC 16-17-7E		TYPE 1	YES	1	
40032A	NE COR OF SE OTR OF NE OTR SEC 16-17-7E IN GRAVEL SHOULDER. ONLY NEEDED IF ADDING ASPHALT SHOULDER	ROD	TYPE 1	YES	1	
40034	W OTR COR SEC 10-17-7E	SURVEY NAIL	TYPE 1	YES	1	
40035	NE COR SEC 9-17-7E		TYPE 1	YES	1	
40039	E OTR COR SEC 33-18-7E		TYPE 1	YES	1	
40039A	NE COR OF SE OTR OF NE OTR SEC 33-18-7E	PK NAIL	TYPE 1	YES	1	
40040	SE COR SEC 28-18-7E	PK NAIL	TYPE 1	YES	1	
40041	E OTR COR SEC 28-18-7E	PK NAIL	TYPE 1	YES	1	
40042	SE COR SEC 21-18-7E	PK NAIL	TYPE 1	YES	1	
40043	E OTR COR SEC 21-18-7E	PK NAIL	TYPE 1	YES	1	
40044	NE COR SEC 21-18-7E	PK NAIL	TYPE 1	YES	1	

THIS NOTE TO BE INCLUDED IN PLANS:
LISTED MONUMENT LOCATIONS HAVE BEEN RECORDED BY GPS. PRE CONSTRUCTION TIES BY THE R.E. ARE NOT REQUIRED.
IF AN UNLISTED MONUMENT IS FOUND, IT MUST BE TIED BY THE R.E. AND BROUGHT TO THE ATTENTION OF THE PLATS AND PLANS MANAGER.
AFTER RESURFACING, THE R.E. IS TO CONTACT THE PLATS AND PLANS MANAGER TO ESTABLISH LOCATIONS FOR PERMANENT SURVEY MARKER CORING.

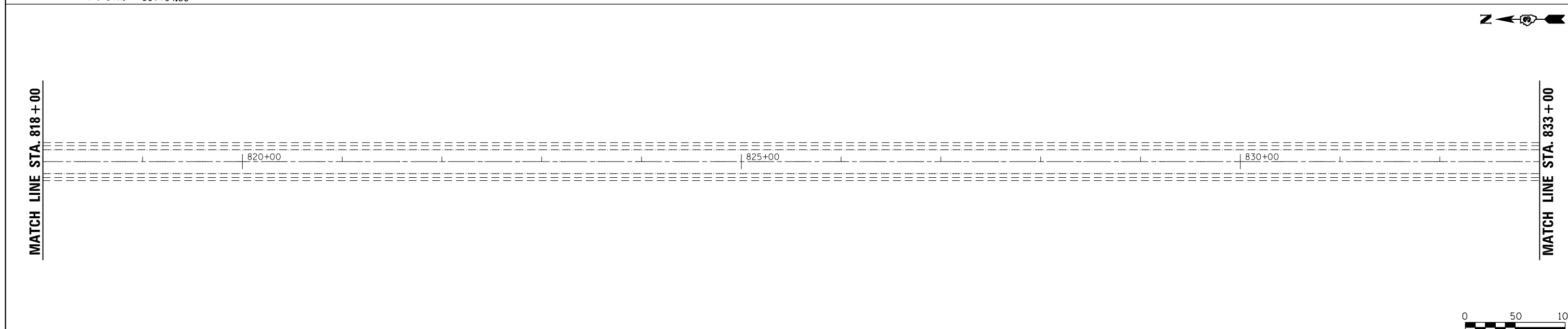
RESPONSIBILITY:
1) RESIDENT TO RE-ESTABLISH MONUMENT (PAY ITEM REQUIRED. PERMANENT SURVEY MARKER, TYPE 1)
2) PLATS AND PLANS TO RE-ESTABLISH MONUMENT

FILE NAME =	USER NAME = duncanbd	DESIGNED -	REVISED -	STATE OF ILLINOIS DEPARTMENT OF TRANSPORTATION	SCHEDULE OF QUANTITIES				F.A.P. RTE.	SECTION	COUNTY	TOTAL SHEETS	SHEET NO.
et:\pw\work\p1dot\duncanbd\0304146\0366C34-sht-schedule.dgn		DRAWN -	REVISED -		646	(103,104)RS-6	BUREAU	28	8				
PLOT SCALE = 100.0000' / in.		CHECKED -	REVISED -		SCALE: SHEET NO. OF SHEETS STA. TO STA.				CONTRACT NO. 66C34				
PLOT DATE = 6/6/2014		DATE -	REVISED -		ILLINOIS FED. AID PROJECT								

PAVEMENT MARKINGS																	
STA. TO STA.	POLYUREA TYPE 1							LETTERS & SYMBOLS SQ FT	RAISED REFL PAVT MARK EACH	TEMPORARY PAINT PAVEMENT MARKING (2 APPLICATIONS)					LETTERS & SYMBOLS SQ FT	SHORT TERM (3 APP) FOOT	
	4"		6"		8"		12"			24"	4"	6"	8"	12"			24"
	YELLOW FOOT	WHITE FOOT	YELLOW FOOT	WHITE FOOT	YELLOW FOOT	WHITE FOOT	WHITE FOOT			FOOT	FOOT	FOOT	FOOT	FOOT			FOOT
796+06 - 800+83																	
MEDIAN ISLAND	1760					355			22		3520		710		130.2		
EDGE LINE		1080			200							400			38.4		
STOP BAR								13			1080			26			
800+83 - 850+83																	
CENTERLINE			1151						63		2302				1534.2		
EDGE LINE		10000									10000						
NO PASSING ZONE	422										844						
850+83 - 954+04																	
CENTERLINE			2581						129		5162				3096.3		
EDGE LINE		20642									20642						
954+04 - 955+08																	
CENTERLINE			26						1		52				0		
EDGE LINE		208									208						
955+08 - 1242+06																	
CENTERLINE			7175						359		14350				8609.4		
EDGE LINE		57396									57396						
MEDIAN	1509					331					3018		662				
NO PASSING ZONE	12722										25444						
TURN LANES (3)				527					93.6	13		1054		187.2	810		
2125 AVE N / IL 40																	
TYPICAL ISLAND							94						188				
STOP BAR								42									
1242+06 - 1243+40																	
CENTERLINE			34						2		68						
EDGE LINE		268									268						
1243+40 - 1266+13																	
CENTERLINE			569						28		1138				681.9		
EDGE LINE		4546									4546						
1266+13 - 1267+38																	
CENTERLINE			32						1		64						
EDGE LINE		250									250						
1267+38 - 1420+00																	
CENTERLINE			3816						191		7632				4578.6		
EDGE LINE		30524									30524						
NO PASSING ZONE	2704										5408						
TOTAL	19117	124914	15384	727	686	94	55	93.6	809	163148	30768	1454	1560	26	187.2	19479	



EXIST. CURVE EXCL-1
 PI STA. = 804+93.90
 $\Delta = 0^\circ 43' 00''$ (LT)
 $D = 0^\circ 07' 09''$
 $R = 48,064.38'$
 $T = 300.60'$
 $L = 601.20'$
 $E = 0.94'$
 $e = \text{-----}$
 $T.R. = \text{-----}$
 $S.E. RUN = \text{-----}$
 $P.C. STA. = 801+93.30$
 $P.T. STA. = 807+94.50$



FILE NAME =	USER NAME = duncanbd	DESIGNED -	REVISED -	STATE OF ILLINOIS DEPARTMENT OF TRANSPORTATION	PLAN VIEW			F.A.P. RTE.	SECTION	COUNTY	TOTAL SHEETS	SHEET NO.
es:\pwwork\pwwork\duncanbd\0304146\0366634-sht-plan.dgn		DRAWN -	REVISED -		646	(103.104)RS-6	BUREAU	28	11			
	PLOT SCALE = 100.0000' / in.	CHECKED -	REVISED -		CONTRACT NO. 66C34			ILLINOIS FED. AID PROJECT				
	PLOT DATE = 6/6/2014	DATE -	REVISED -		SCALE:	SHEET NO. OF SHEETS	STA. TO STA.					

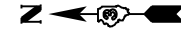


MATCH LINE STA. 833+00

2775 AVE N.
+46

835+00 840+00 845+00

MATCH LINE STA. 848+00



MATCH LINE STA. 848+00

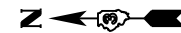
STA. 852+17
3X2 BOX CULV.

850+00 855+00 860+00

M.B.T.
+37

F.E.
+03

MATCH LINE STA. 863+00



MATCH LINE STA. 863+00

STA. 866+66
3X2 BOX CULV.

865+00 870+00 875+00

2700 AVE N.
+00

STA. 874+29
4X1 BOX CULV.

MATCH LINE STA. 878+00



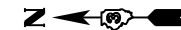
FILE NAME =	USER NAME = duncanbd	DESIGNED -	REVISED -
ei:\pwork\pwork\dot\duncanbd\0304146\0366C34-sht-plan.dgn		DRAWN -	REVISED -
	PLOT SCALE = 100.0000' / in.	CHECKED -	REVISED -
	PLOT DATE = 6/6/2014	DATE -	REVISED -

STATE OF ILLINOIS
DEPARTMENT OF TRANSPORTATION

PLAN VIEW

SCALE: SHEET NO. OF SHEETS STA. TO STA.

F.A.P. RTE.	SECTION	COUNTY	TOTAL SHEETS	SHEET NO.
646	(103.104)RS-6	BUREAU	28	12
CONTRACT NO. 66C34				
ILLINOIS FED. AID PROJECT				



MATCH LINE STA. 878+00

MATCH LINE STA. 893+00

STA. 892+50
3X2 BOX CULV.

880+00

885+00

890+00

P.E.
+08

F.E.
+16



MATCH LINE STA. 893+00

MATCH LINE STA. 908+00

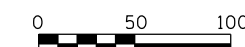
895+00

900+00

905+00

F.E.
+49

F.E.
+49



MATCH LINE STA. 908+00

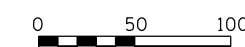
MATCH LINE STA. 923+00

910+00

915+00

920+00

F.E.
+40



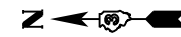
FILE NAME =	USER NAME = duncanbd	DESIGNED -	REVISED -
es:\pwwork\pwwork\duncanbd\0304146\03666C34-sht-plan.dgn		DRAWN -	REVISED -
	PLOT SCALE = 100.0000' / in.	CHECKED -	REVISED -
	PLOT DATE = 6/6/2014	DATE -	REVISED -

STATE OF ILLINOIS
DEPARTMENT OF TRANSPORTATION

PLAN VIEW

SCALE: SHEET NO. OF SHEETS STA. TO STA.

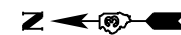
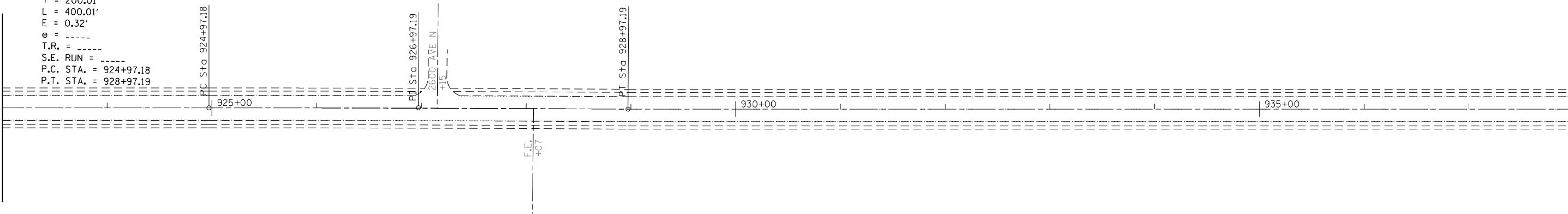
F.A.P. RTE.	SECTION	COUNTY	TOTAL SHEETS	SHEET NO.
646	(103.104)RS-6	BUREAU	28	13
CONTRACT NO. 66C34				
ILLINOIS FED. AID PROJECT				



EXIST. CURVE EXCL-2
 PI STA. = 926+97.19
 $\Delta = 0^\circ 22' 00''$ (RT)
 $D = 0^\circ 05' 30''$
 $R = 62,508.71'$
 $T = 200.01'$
 $L = 400.01'$
 $E = 0.32'$
 $e = \text{-----}$
 $T.R. = \text{-----}$
 $S.E. \text{ RUN} = \text{-----}$
 $P.C. \text{ STA.} = 924+97.18$
 $P.T. \text{ STA.} = 928+97.19$

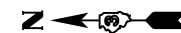
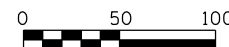
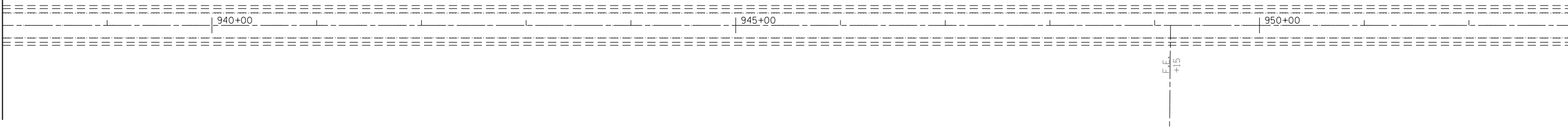
MATCH LINE STA. 923+00

MATCH LINE STA. 938+00



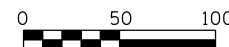
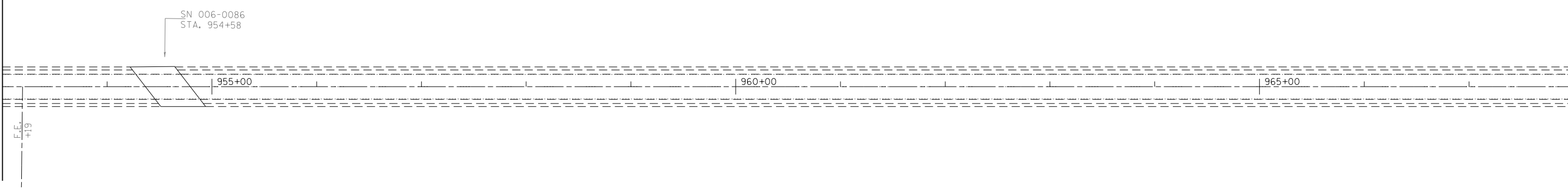
MATCH LINE STA. 938+00

MATCH LINE STA. 953+00



MATCH LINE STA. 953+00

MATCH LINE STA. 968+00



FILE NAME =	USER NAME = duncanbd	DESIGNED -	REVISED -
es:\pwwork\pwwork\duncanbd\0304146\0366634-sht-plan.dgn		DRAWN -	REVISED -
	PLOT SCALE = 100.0000' / in.	CHECKED -	REVISED -
	PLOT DATE = 6/6/2014	DATE -	REVISED -

STATE OF ILLINOIS
 DEPARTMENT OF TRANSPORTATION

PLAN VIEW

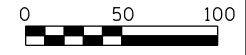
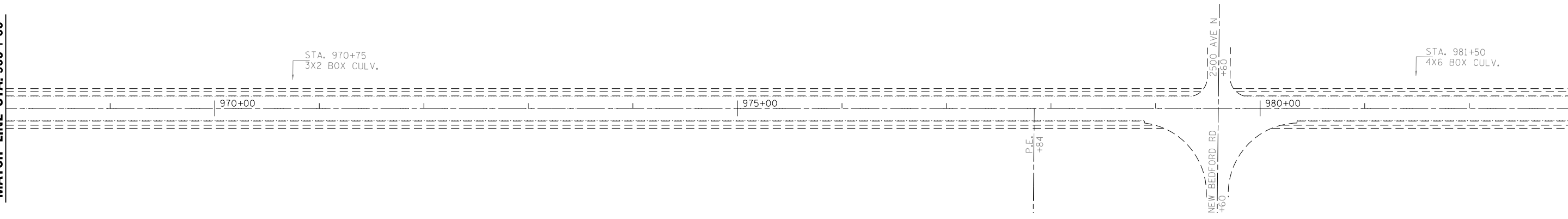
SCALE: SHEET NO. OF SHEETS STA. TO STA.

F.A.P. RTE.	SECTION	COUNTY	TOTAL SHEETS	SHEET NO.
646	(103.104)RS-6	BUREAU	28	14
CONTRACT NO. 66C34				
ILLINOIS FED. AID PROJECT				



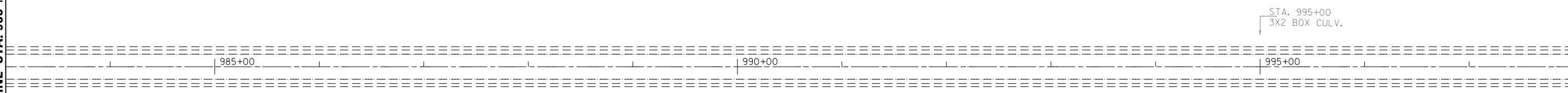
MATCH LINE STA. 968+00

MATCH LINE STA. 983+00



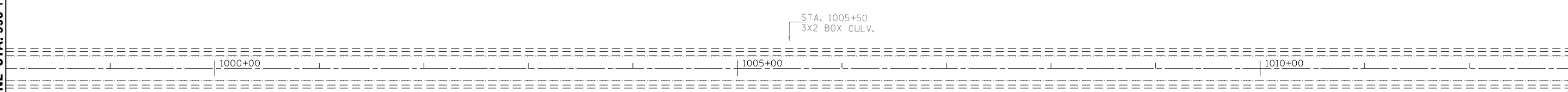
MATCH LINE STA. 983+00

MATCH LINE STA. 998+00



MATCH LINE STA. 998+00

MATCH LINE STA. 1013+00



FILE NAME =	USER NAME = duncanbd	DESIGNED -	REVISED -
ei:\pwork\pwork\dot\duncanbd\0304146\0366C34-sht-plan.dgn		DRAWN -	REVISED -
	PLOT SCALE = 100.0000' / in.	CHECKED -	REVISED -
	PLOT DATE = 6/6/2014	DATE -	REVISED -

**STATE OF ILLINOIS
DEPARTMENT OF TRANSPORTATION**

PLAN VIEW

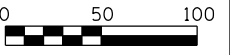
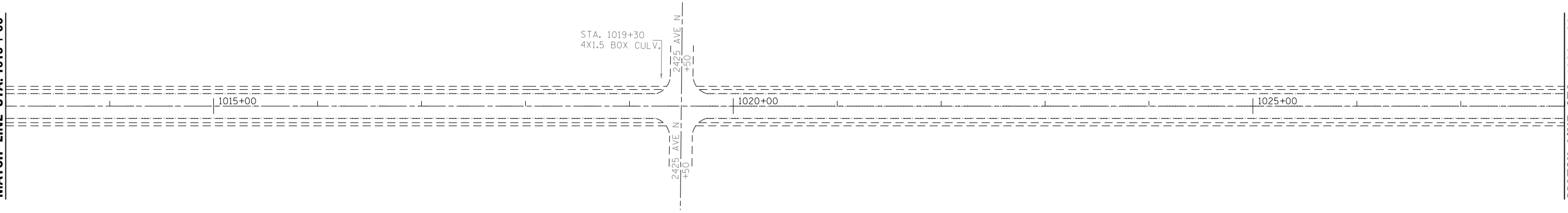
SCALE: SHEET NO. OF SHEETS STA. TO STA.

F.A.P. RTE.	SECTION	COUNTY	TOTAL SHEETS	SHEET NO.
646	(103.104)RS-6	BUREAU	28	15
CONTRACT NO. 66C34				
ILLINOIS FED. AID PROJECT				



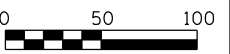
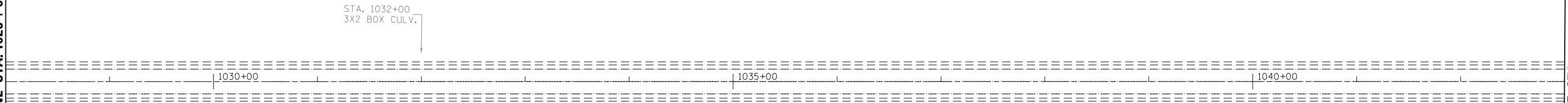
MATCH LINE STA. 1013 + 00

MATCH LINE STA. 1028 + 00



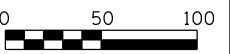
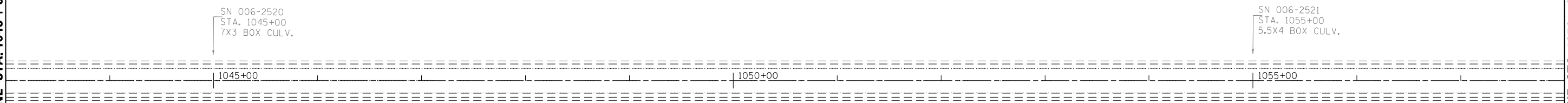
MATCH LINE STA. 1028 + 00

MATCH LINE STA. 1043 + 00



MATCH LINE STA. 1043 + 00

MATCH LINE STA. 1058 + 00



FILE NAME =	USER NAME = duncanbd	DESIGNED -	REVISED -
c:\pwwork\pwwork\duncanbd\0304146\036634-sht-plan.dgn		DRAWN -	REVISED -
	PLOT SCALE = 100.0000' / in.	CHECKED -	REVISED -
	PLOT DATE = 6/6/2014	DATE -	REVISED -

**STATE OF ILLINOIS
DEPARTMENT OF TRANSPORTATION**

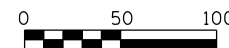
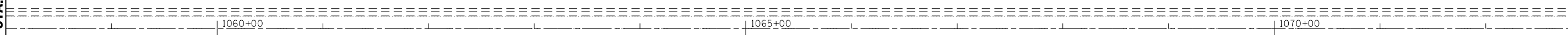
PLAN VIEW			
SCALE:	SHEET NO. OF SHEETS	STA.	TO STA.

F.A.P. RTE.	SECTION	COUNTY	TOTAL SHEETS	SHEET NO.
646	(103.104)RS-6	BUREAU	28	16
CONTRACT NO. 66C34				
ILLINOIS FED. AID PROJECT				



MATCH LINE STA. 1058 + 00

MATCH LINE STA. 1073 + 00

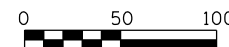
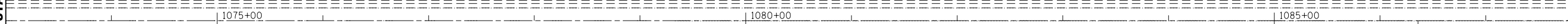


MATCH LINE STA. 1073 + 00

MATCH LINE STA. 1088 + 00

STA. 1074+00
5x2 BOX CULV.

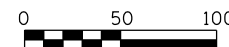
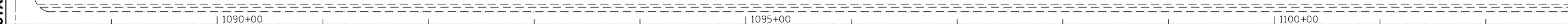
STA. 1077+08
5x4 BOX CULV.



MATCH LINE STA. 1088 + 00
2300 AVE. N
+08

MATCH LINE STA. 1103 + 00

STA. 1094+00
4x5.5 BOX CULV.



FILE NAME =	USER NAME = duncanbd	DESIGNED -	REVISED -
es:\pw_work\p1dot\duncanbd\0304146\0366C34-sht-plan.dgn		DRAWN -	REVISED -
	PLOT SCALE = 100.0000' / in.	CHECKED -	REVISED -
	PLOT DATE = 6/6/2014	DATE -	REVISED -

STATE OF ILLINOIS
DEPARTMENT OF TRANSPORTATION

PLAN VIEW

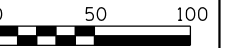
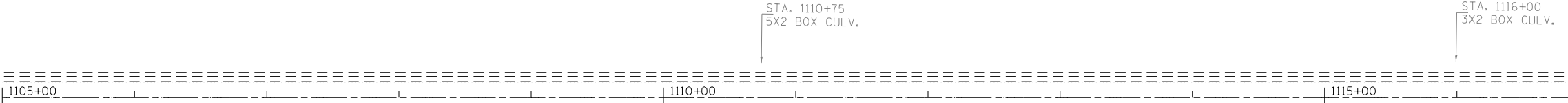
SCALE: SHEET NO. OF SHEETS STA. TO STA.

F.A.P. RTE.	SECTION	COUNTY	TOTAL SHEETS	SHEET NO.
646	(103.104)RS-6		28	17
CONTRACT NO. 66C34				
ILLINOIS FED. AID PROJECT				



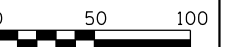
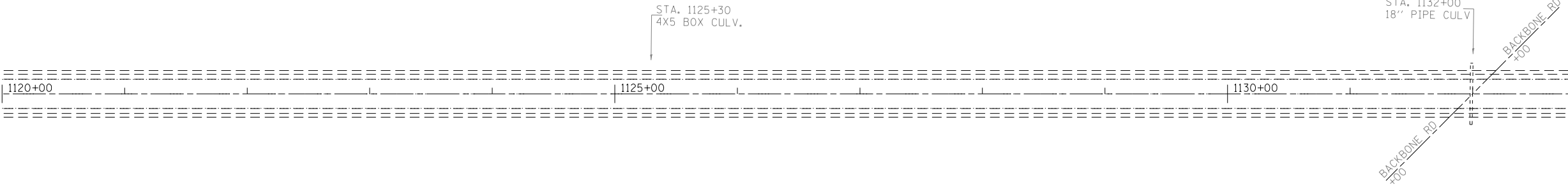
MATCH LINE STA. 1103+00

MATCH LINE STA. 1118+00



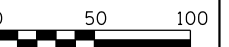
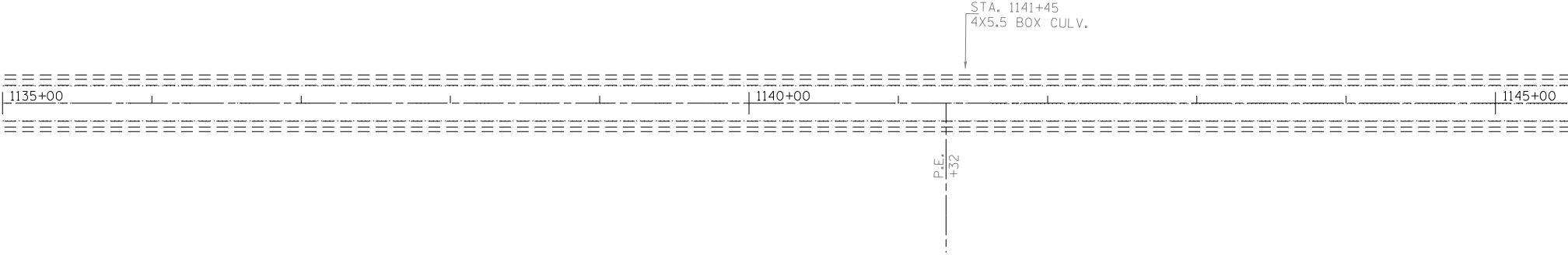
MATCH LINE STA. 1118+00

MATCH LINE STA. 1133+00



MATCH LINE STA. 1133+00

MATCH LINE STA. 1148+00



FILE NAME =	USER NAME = duncanbd	DESIGNED -	REVISED -
es:\pwwork\pwwork\duncanbd\0304146\03666C34-sht-plan.dgn		DRAWN -	REVISED -
	PLOT SCALE = 100.0000' / in.	CHECKED -	REVISED -
	PLOT DATE = 6/6/2014	DATE -	REVISED -

**STATE OF ILLINOIS
DEPARTMENT OF TRANSPORTATION**

PLAN VIEW

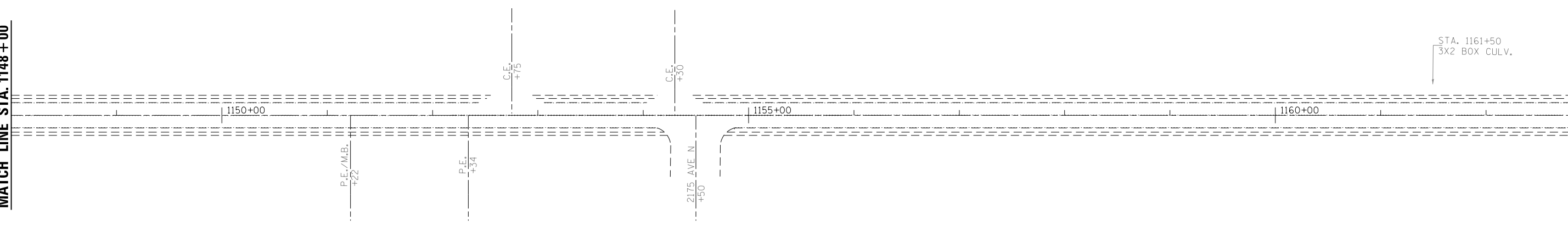
SCALE:	SHEET NO. OF SHEETS	STA. TO STA.
--------	---------------------	--------------

F.A.P. RTE.	SECTION	COUNTY	TOTAL SHEETS	SHEET NO.
646	(103,104)RS-6		28	18
CONTRACT NO. 66C34				
ILLINOIS FED. AID PROJECT				



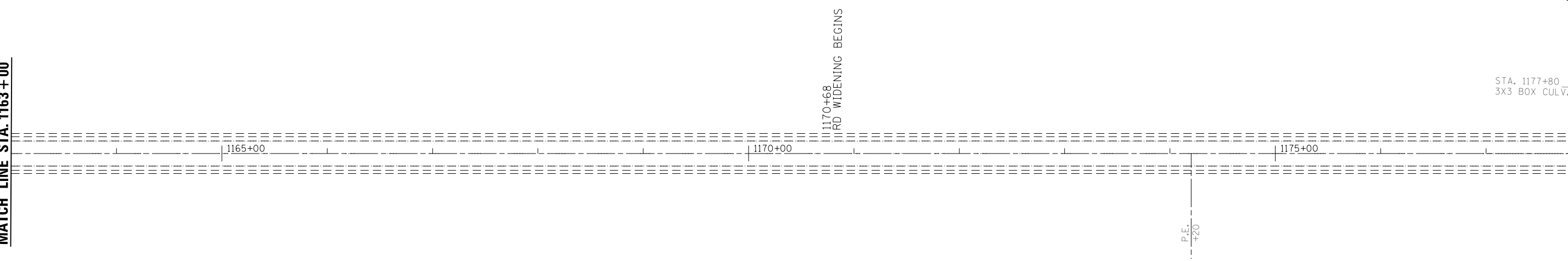
MATCH LINE STA. 1148+00

MATCH LINE STA. 1163+00



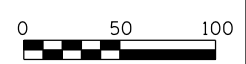
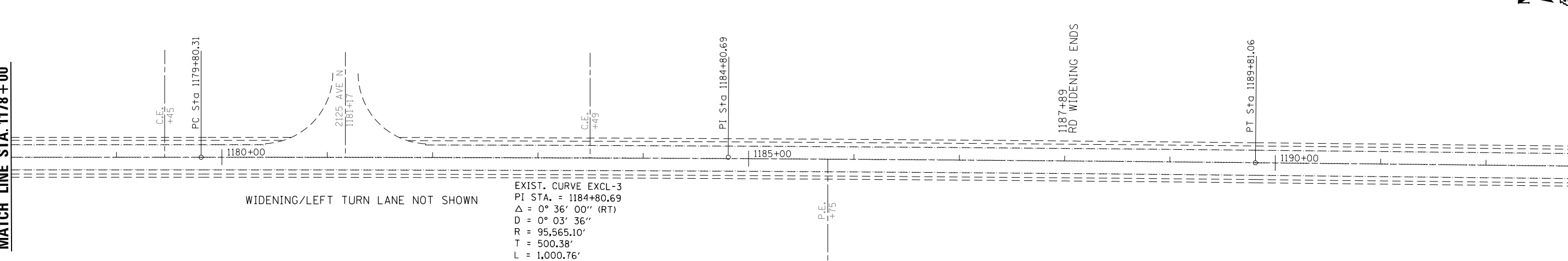
MATCH LINE STA. 1163+00

MATCH LINE STA. 1178+00



MATCH LINE STA. 1178+00

MATCH LINE STA. 1193+00



EXIST. CURVE EXCL-3
 PI STA. = 1184+80.69
 $\Delta = 0^\circ 36' 00''$ (RT)
 $D = 0^\circ 03' 36''$
 $R = 95,565.10'$
 $T = 500.38'$
 $L = 1,000.76'$
 $E = 1.31'$
 $e = \text{-----}$
 $T.R. = \text{-----}$
 $S.E. \text{ RUN} = \text{-----}$
 P.C. STA. = 1179+80.31
 P.T. STA. = 1189+81.06

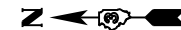
FILE NAME =	USER NAME = duncanbd	DESIGNED -	REVISED -
ei:\pwork\pwork\dot\duncanbd\0304146\0366C34-sht-plan.dgn		DRAWN -	REVISED -
PLOT SCALE = 100.0000' / in.		CHECKED -	REVISED -
PLOT DATE = 6/6/2014		DATE -	REVISED -

**STATE OF ILLINOIS
DEPARTMENT OF TRANSPORTATION**

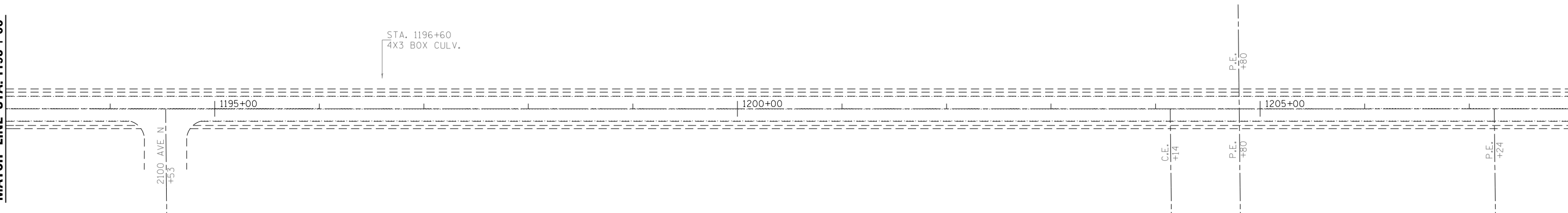
PLAN VIEW

SCALE: SHEET NO. OF SHEETS STA. TO STA.

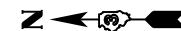
F.A.P. RTE.	SECTION	COUNTY	TOTAL SHEETS	SHEET NO.
646	(103.104)RS-6	BUREAU	28	19
CONTRACT NO. 66C34				
ILLINOIS FED. AID PROJECT				



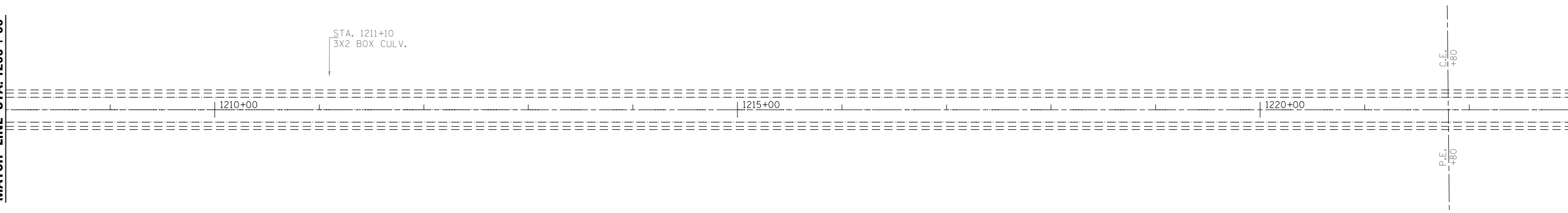
MATCH LINE STA. 1193 + 00



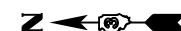
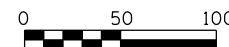
MATCH LINE STA. 1208 + 00



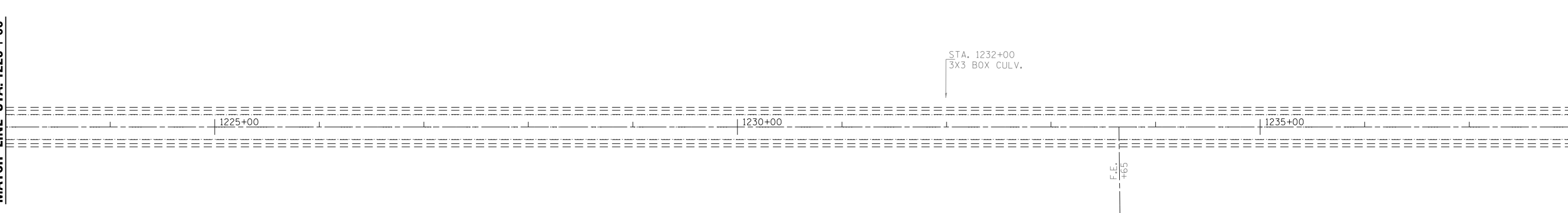
MATCH LINE STA. 1208 + 00



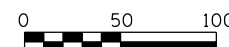
MATCH LINE STA. 1223 + 00



MATCH LINE STA. 1223 + 00



MATCH LINE STA. 1238 + 00



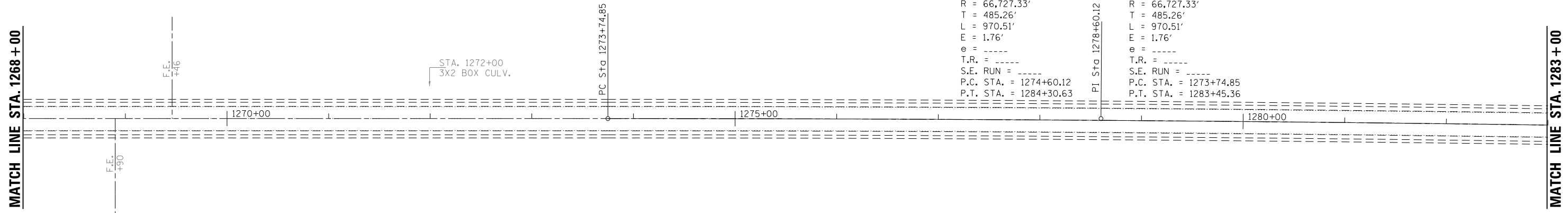
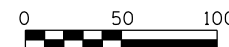
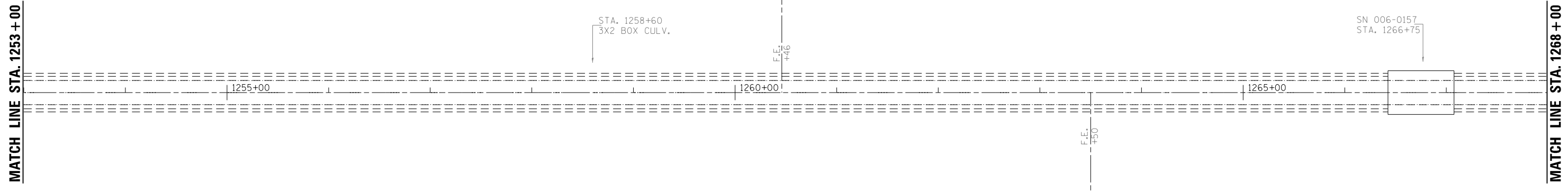
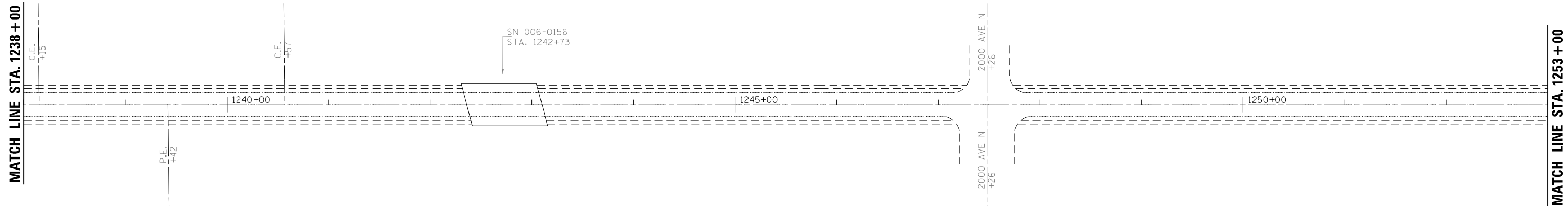
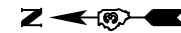
FILE NAME =	USER NAME = duncanbd	DESIGNED -	REVISED -
ei:\pwwork\pwwork\duncanbd\0304146\0366C34-sht-plan.dgn		DRAWN -	REVISED -
	PLOT SCALE = 100.0000' / in.	CHECKED -	REVISED -
	PLOT DATE = 6/6/2014	DATE -	REVISED -

**STATE OF ILLINOIS
DEPARTMENT OF TRANSPORTATION**

PLAN VIEW

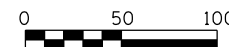
SCALE: SHEET NO. OF SHEETS STA. TO STA.

F.A.P. RTE.	SECTION	COUNTY	TOTAL SHEETS	SHEET NO.
646	(103.104)RS-6		28	20
CONTRACT NO. 66C34				
ILLINOIS FED. AID PROJECT				



EXIST. CURVE EXCL-4
 PI STA. = 1279+45.38
 Δ = 0° 50' 00" (RT)
 D = 0° 05' 09"
 R = 66,727.33'
 T = 485.26'
 L = 970.51'
 E = 1.76'
 e = -----
 T.R. = -----
 S.E. RUN = -----
 P.C. STA. = 1274+60.12
 P.T. STA. = 1284+30.63

EXIST. CURVE EXCL-4
 PI STA. = 1278+60.12
 Δ = 0° 50' 00" (RT)
 D = 0° 05' 09"
 R = 66,727.33'
 T = 485.26'
 L = 970.51'
 E = 1.76'
 e = -----
 T.R. = -----
 S.E. RUN = -----
 P.C. STA. = 1273+74.85
 P.T. STA. = 1283+45.36



FILE NAME =	USER NAME = duncanbd	DESIGNED -	REVISED -
es:\pwork\pwork\dot\duncanbd\0304146\0366C34-sht-plan.dgn		DRAWN -	REVISED -
	PLOT SCALE = 100.0000' / in.	CHECKED -	REVISED -
	PLOT DATE = 6/6/2014	DATE -	REVISED -

**STATE OF ILLINOIS
 DEPARTMENT OF TRANSPORTATION**

PLAN VIEW

SCALE: SHEET NO. OF SHEETS STA. TO STA.

F.A.P. RTE.	SECTION	COUNTY	TOTAL SHEETS	SHEET NO.
646	(103.104)RS-6		28	21
CONTRACT NO. 66C34				
ILLINOIS FED. AID PROJECT				



MATCH LINE STA. 1283+00

PT Sta 1283+45.36

C.E. +37

1925 AVE. N +03

STA. 1293+00
4X1.5 BOX CULV.

MATCH LINE STA. 1298+00



MATCH LINE STA. 1298+00

STA. 1301+75
4X1.5 BOX CULV.

C.E. +03

MATCH LINE STA. 1313+00



MATCH LINE STA. 1313+00

STA. 1324+00
3X2 BOX CULV.

C.E. +03

MATCH LINE STA. 1328+00



FILE NAME =	USER NAME = duncanbd	DESIGNED -	REVISED -
c:\pwwork\pwwork\duncanbd\0304146\036634-sht-plan.dgn		DRAWN -	REVISED -
	PLOT SCALE = 100.0000' / in.	CHECKED -	REVISED -
	PLOT DATE = 6/6/2014	DATE -	REVISED -

**STATE OF ILLINOIS
DEPARTMENT OF TRANSPORTATION**

PLAN VIEW

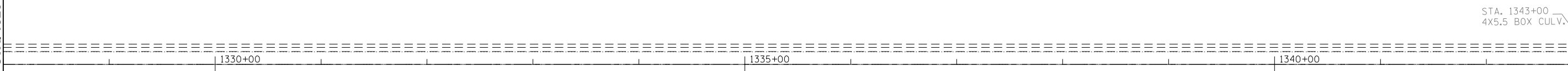
SCALE: SHEET NO. OF SHEETS STA. TO STA.

F.A.P. RTE.	SECTION	COUNTY	TOTAL SHEETS	SHEET NO.
646	(103.104)RS-6	BUREAU	28	22
CONTRACT NO. 66C34				
ILLINOIS FED. AID PROJECT				



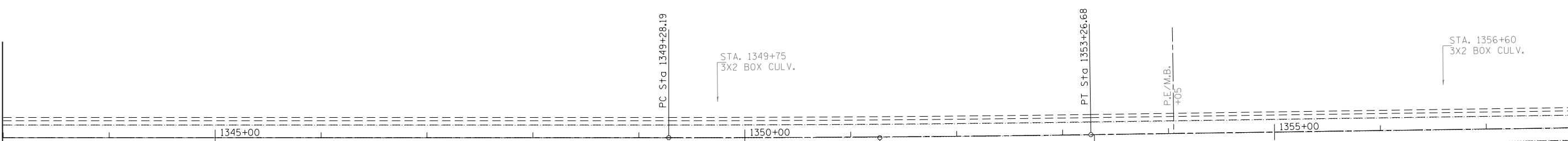
MATCH LINE STA. 1328+00

MATCH LINE STA. 1343+00



MATCH LINE STA. 1343+00

MATCH LINE STA. 1358+00

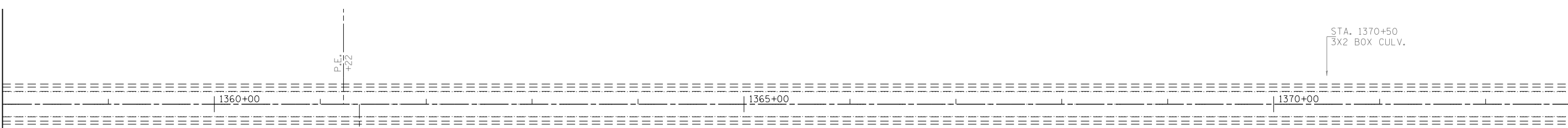


EXIST. CURVE EXCL-5	EXIST. CURVE EXCL-5
PI STA. = 1351+27.44	PI STA. = 1352+97.96
$\Delta = 0^\circ 49' 00''$ (LT)	$\Delta = 0^\circ 49' 00''$ (LT)
D = $0^\circ 12' 18''$	D = $0^\circ 12' 18''$
R = 27,957.66'	R = 27,957.66'
T = 199.25'	T = 199.25'
L = 398.50'	L = 398.50'
E = 0.71'	E = 0.71'
e = -----	e = -----
T.R. = -----	T.R. = -----
S.E. RUN = -----	S.E. RUN = -----
P.C. STA. = 1349+28.19	P.C. STA. = 1350+98.71
P.T. STA. = 1353+26.68	P.T. STA. = 1354+97.21



MATCH LINE STA. 1358+00

MATCH LINE STA. 1373+00



FILE NAME =	USER NAME = duncanbd	DESIGNED -	REVISED -
c:\pwwork\pwwork\duncanbd\0304146\0366634-sht-plan.dgn		DRAWN -	REVISED -
PLOT SCALE = 100.0000' / in.		CHECKED -	REVISED -
PLOT DATE = 6/6/2014		DATE -	REVISED -

**STATE OF ILLINOIS
DEPARTMENT OF TRANSPORTATION**

PLAN VIEW

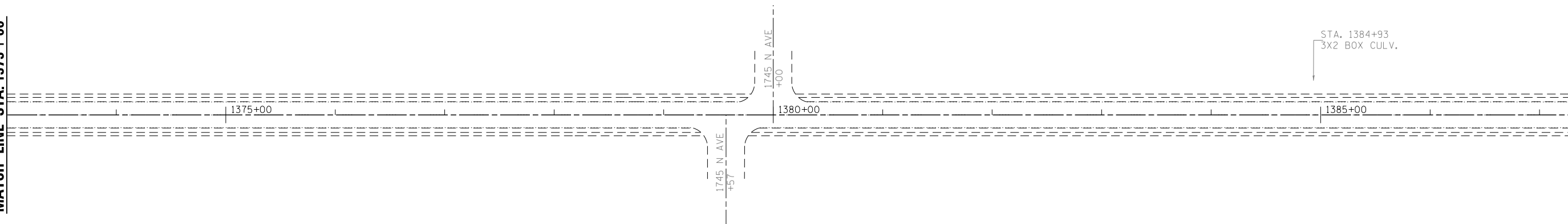
SCALE: SHEET NO. OF SHEETS STA. TO STA.

F.A.P. RTE.	SECTION	COUNTY	TOTAL SHEETS	SHEET NO.
646	(103.104)RS-6		28	23
CONTRACT NO. 66C34				
ILLINOIS FED. AID PROJECT				



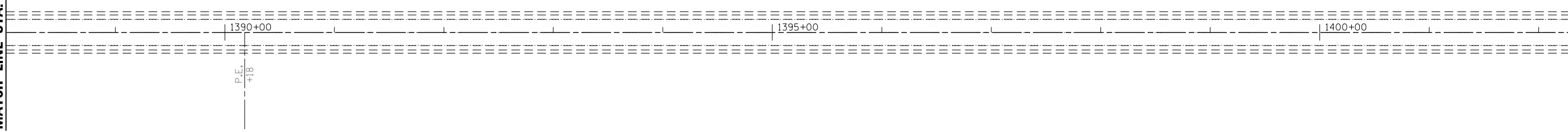
MATCH LINE STA. 1373+00

MATCH LINE STA. 1388+00



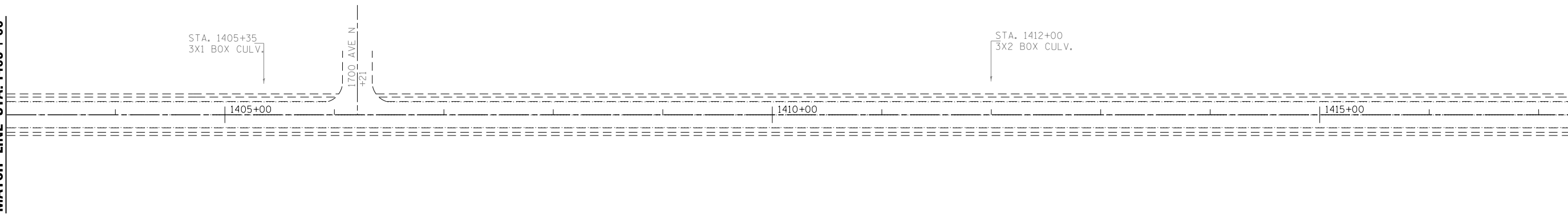
MATCH LINE STA. 1388+00

MATCH LINE STA. 1403+00



MATCH LINE STA. 1403+00

MATCH LINE STA. 1418+00



FILE NAME =	USER NAME = duncanbd	DESIGNED -	REVISED -
es:\pwwork\pwwork\duncanbd\0304146\0366634-sht-plan.dgn		DRAWN -	REVISED -
	PLOT SCALE = 100.0000' / in.	CHECKED -	REVISED -
	PLOT DATE = 6/6/2014	DATE -	REVISED -

**STATE OF ILLINOIS
DEPARTMENT OF TRANSPORTATION**

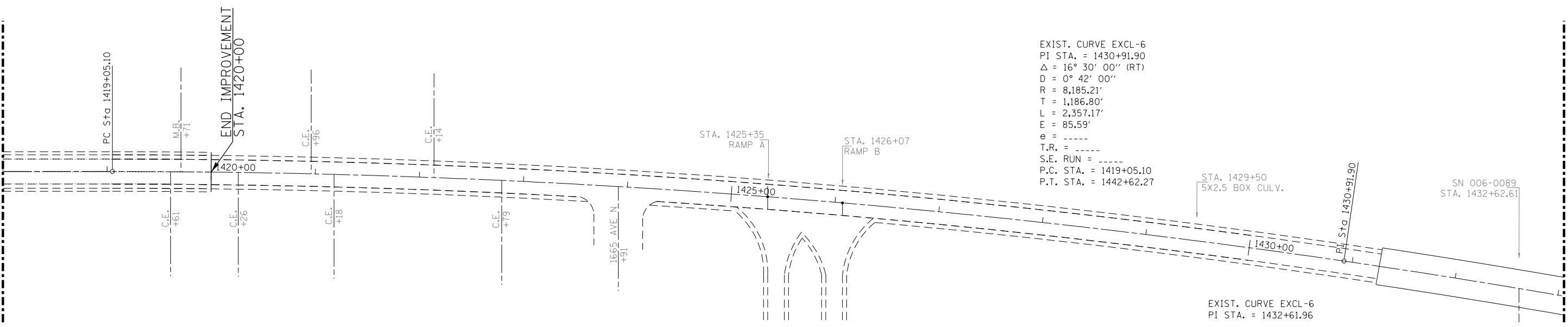
PLAN VIEW

SCALE: SHEET NO. OF SHEETS STA. TO STA.

F.A.P. RTE.	SECTION	COUNTY	TOTAL SHEETS	SHEET NO.
646	(103.104)RS-6	BUREAU	28	24
CONTRACT NO. 66C34			ILLINOIS FED. AID PROJECT	



MATCH LINE STA. 1418 + 00



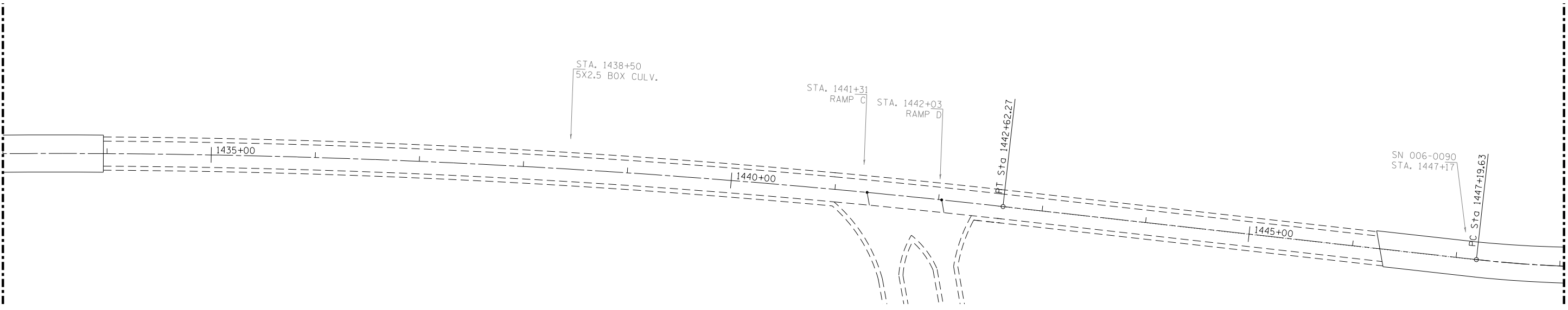
EXIST. CURVE EXCL-6
 PI STA. = 1430+91.90
 $\Delta = 16^\circ 30' 00''$ (RT)
 $D = 0^\circ 42' 00''$
 $R = 8,185.21'$
 $T = 1,186.80'$
 $L = 2,357.17'$
 $E = 85.59'$
 $e = \text{-----}$
 $T.R. = \text{-----}$
 $S.E. \text{ RUN} = \text{-----}$
 $P.C. \text{ STA.} = 1419+05.10$
 $P.T. \text{ STA.} = 1442+62.27$



MATCH LINE STA. 1433 + 00



MATCH LINE STA. 1433 + 00



MATCH LINE STA. 1448 + 00

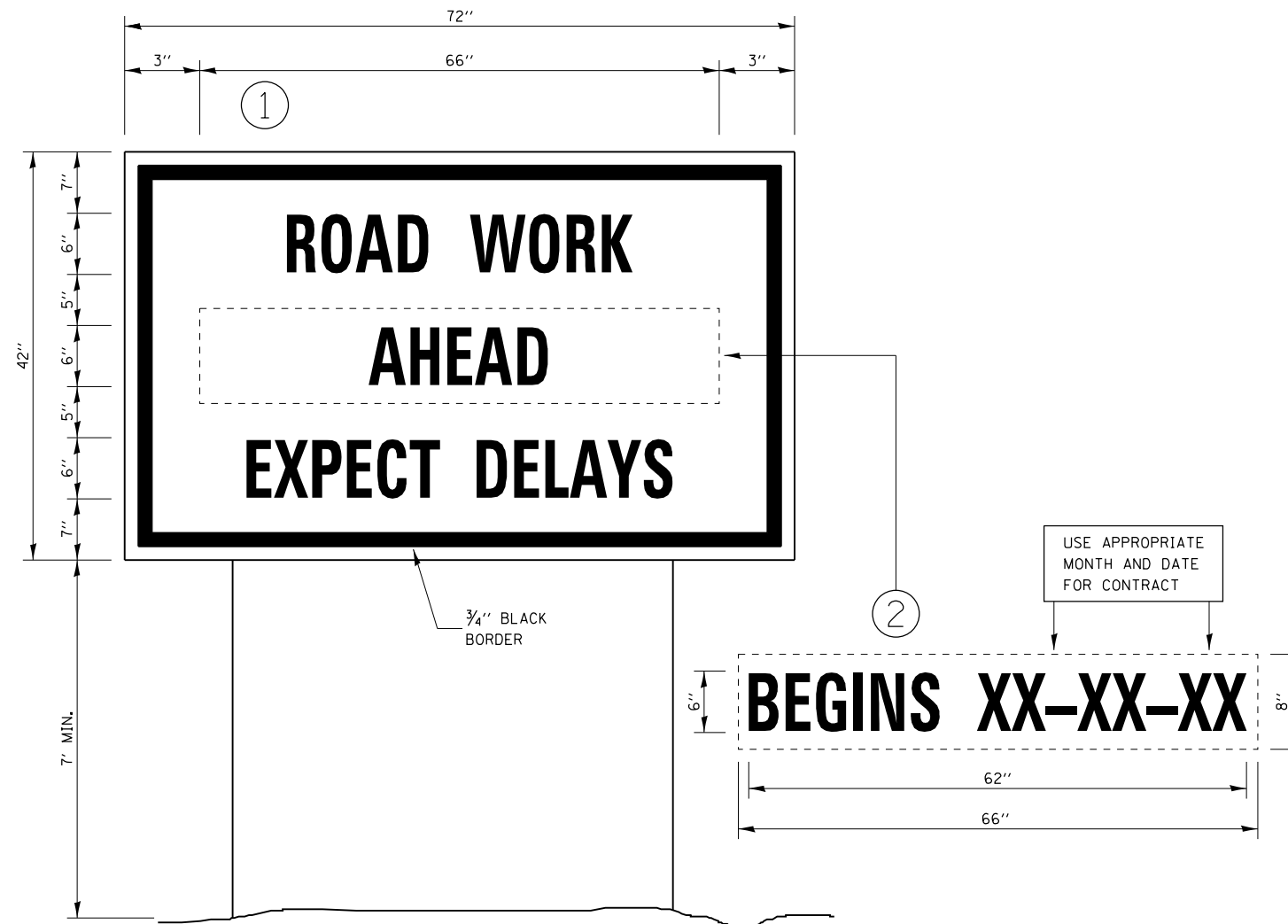
FILE NAME =	USER NAME = duncanbd	DESIGNED -	REVISED -
es:\pw\work\p\dot\duncanbd\0304146\0366C34-sht-plan.dgn		DRAWN -	REVISED -
	PLOT SCALE = 100.0000' / in.	CHECKED -	REVISED -
	PLOT DATE = 6/6/2014	DATE -	REVISED -

**STATE OF ILLINOIS
 DEPARTMENT OF TRANSPORTATION**

PLAN VIEW

SCALE: SHEET NO. OF SHEETS STA. TO STA.

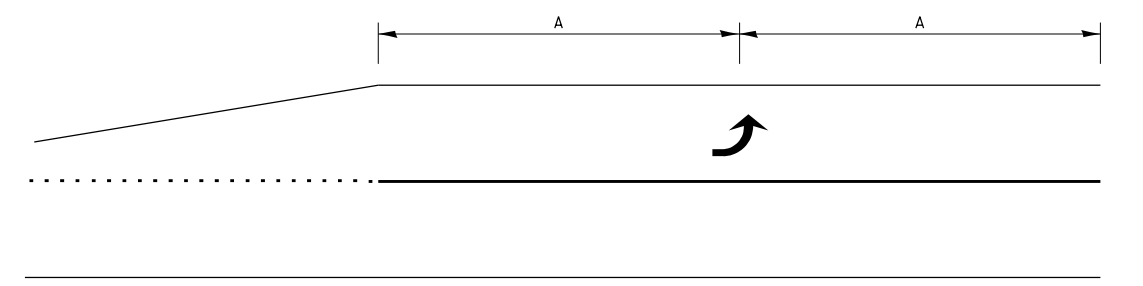
F.A. RTE.	SECTION	COUNTY	TOTAL SHEETS	SHEET NO.
646	(103.104)RS-6	BUREAU	28	25
CONTRACT NO. 66C34			ILLINOIS FED. AID PROJECT	



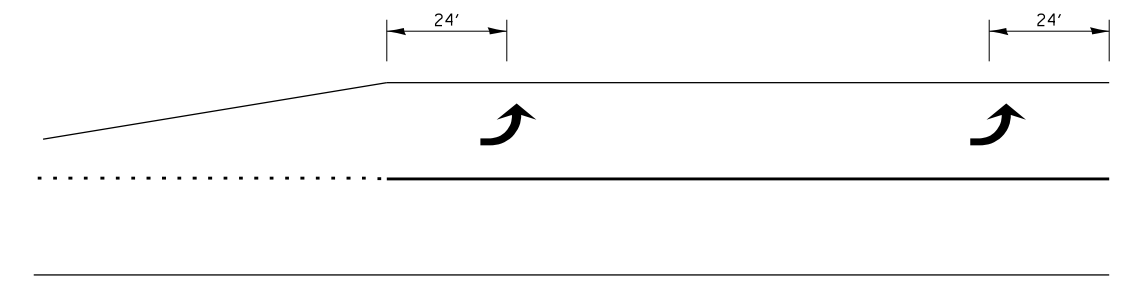
TEMPORARY INFORMATION SIGNING

NOTES:

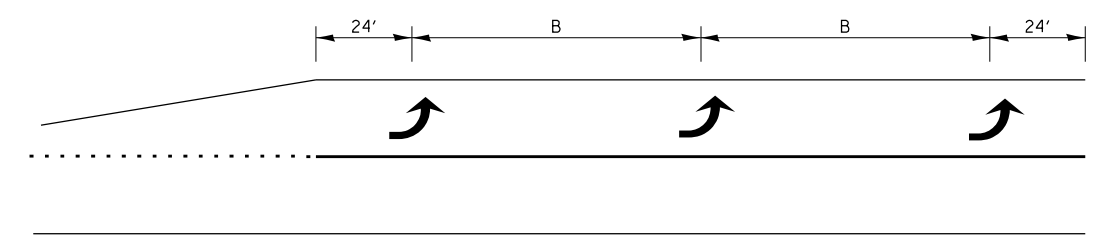
1. USE 6" D BLACK LETTERING ON FLOURESENT ORANGE BACKGROUND.
2. ERECT SIGNS AT LOCATIONS IN ADVANCE OF THE "ROAD CONSTRUCTION AHEAD" SIGNS AS DIRECTED BY THE ENGINEER.
3. ERECT SIGN ① WITH INSTALLED PANEL ② A MINIMUM OF ONE WEEK PRIOR TO THE START OF THE LANE CLOSURE.
4. REMOVE PANEL ② ON THAT DATE.
5. SEE SPECIAL PROVISION "TEMPORARY INFORMATION SIGNING" FOR ADDITIONAL INFORMATION.
6. WILL BE PAID FOR PER SQ FT AS "TEMPORARY INFORMATION SIGNING". EACH SIGN = 21 SQ FT AND THE DATE PANEL ② WILL NOT BE MEASURED SEPARATELY FOR PAYMENT.



99' AND UNDER



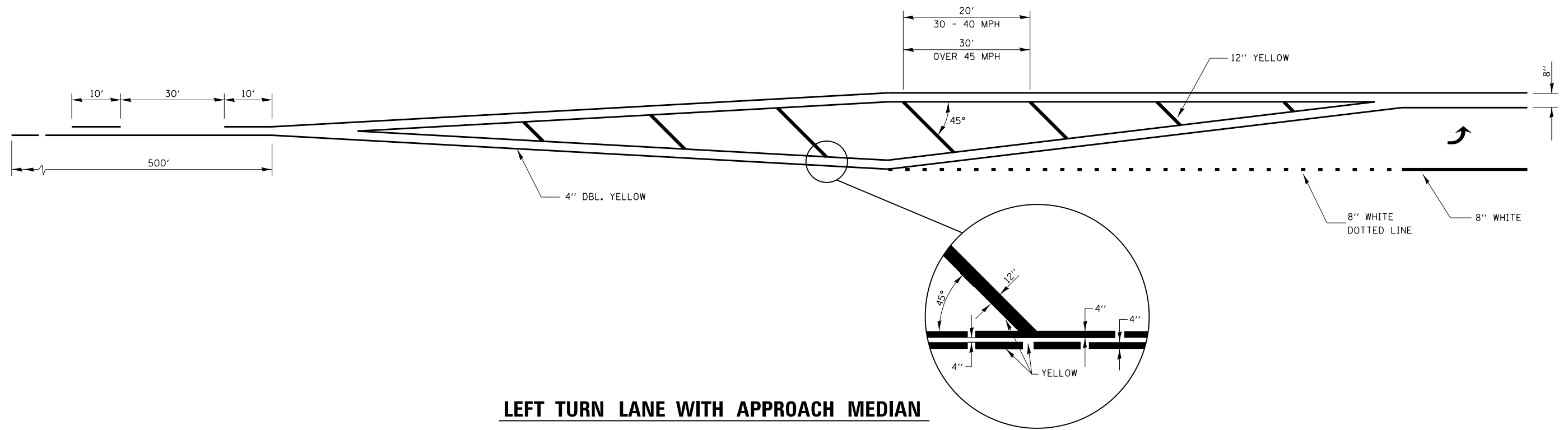
100' TO 149'



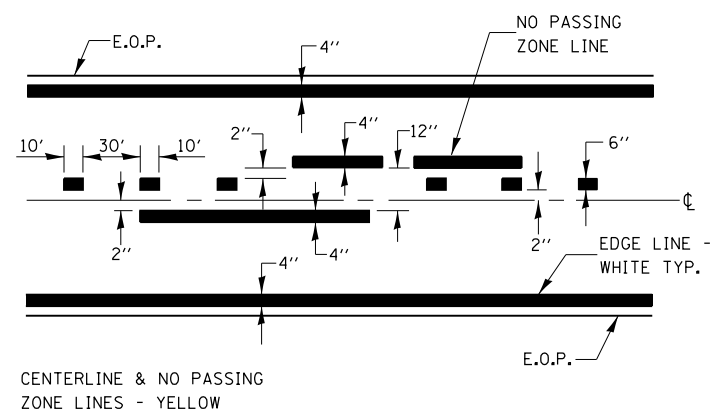
150' AND LONGER

TYPICAL PLACEMENT OF ARROWS IN TURN LANES

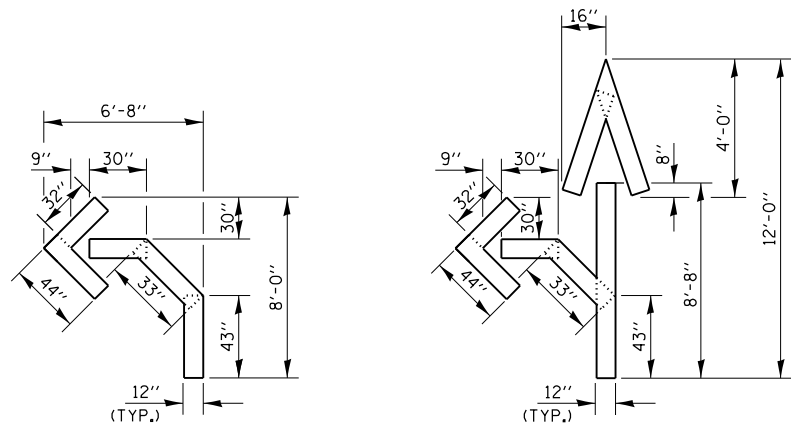
FILE NAME =	USER NAME = duncanbd	DESIGNED -	REVISED -	STATE OF ILLINOIS DEPARTMENT OF TRANSPORTATION	DETAILS			F.A.P. RTE.	SECTION	COUNTY	TOTAL SHEETS	SHEET NO.
et:\pw\work\pwidot\duncanbd\0304146\0366C34-sht-details.dgn		DRAWN -	REVISED -		646	(103,104)RS-6	BUREAU	28	26			
	PLOT SCALE = 100.0000' / in.	CHECKED -	REVISED -		CONTRACT NO. 66C34							
	PLOT DATE = 6/6/2014	DATE -	REVISED -		SCALE:	SHEET NO.	OF SHEETS	STA.	TO STA.	ILLINOIS FED. AID PROJECT		



LEFT TURN LANE WITH APPROACH MEDIAN

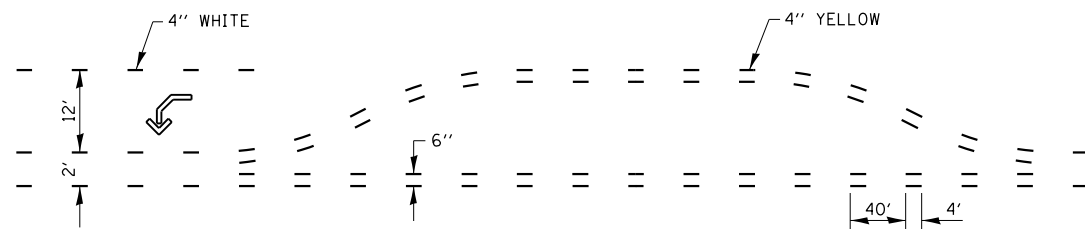


PAVEMENT MARKING

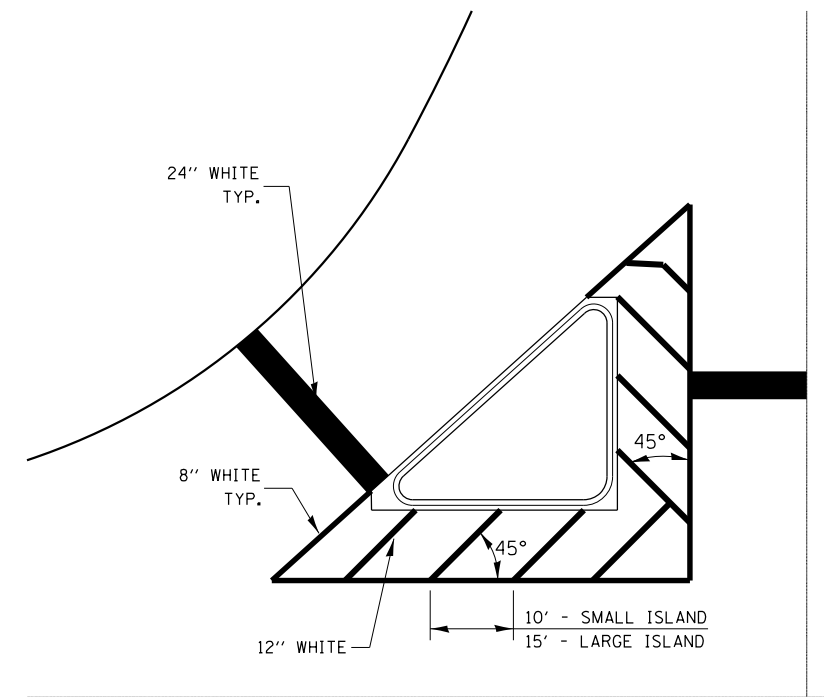


QUANTITY
12" LINE = 16 LIN. FT.
OR 4" LINE = 48 LIN. FT.

QUANTITY
12" LINE = 29 LIN. FT.
OR 4" LINE = 87 LIN. FT.

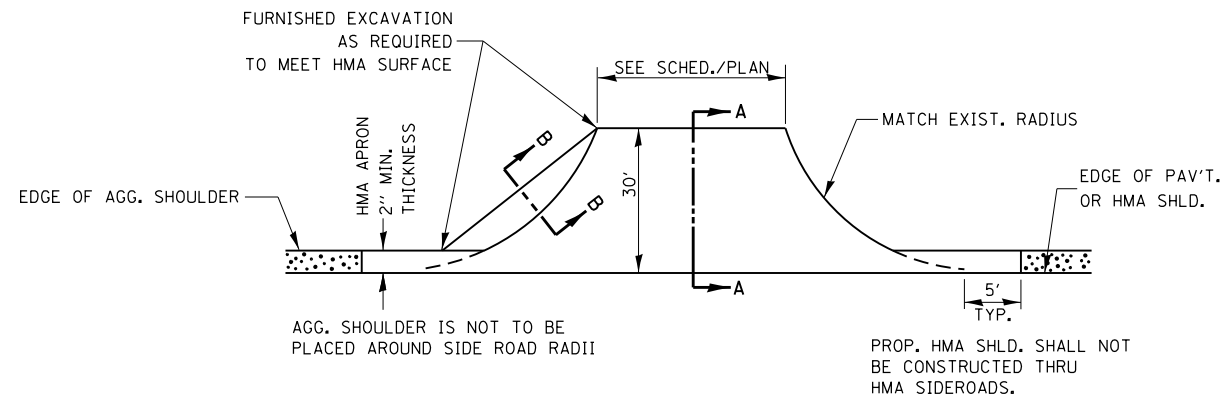


SHORT-TERM PAVEMENT MARKING FOR MEDIANS AND ARROWS

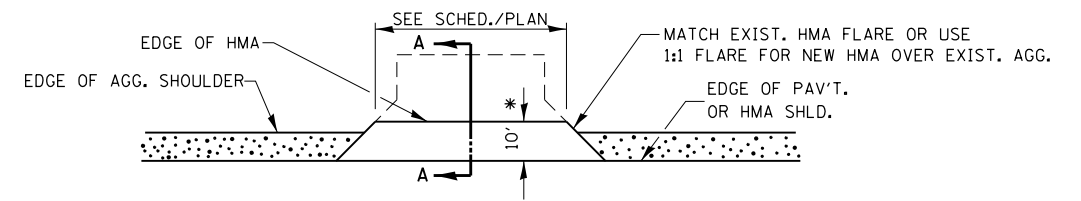


TYPICAL ISLAND

FILE NAME =	USER NAME = duncanbd	DESIGNED -	REVISED -	STATE OF ILLINOIS DEPARTMENT OF TRANSPORTATION	DETAILS				F.A.P. RTE.	SECTION	COUNTY	TOTAL SHEETS	SHEET NO.		
et:\pw\work\p\dot\duncanbd\0304146\0366C34-sht-details.dgn		DRAWN -	REVISED -		SCALE:	SHEET	OF	SHEETS	STA.	TO STA.	646	(103,104)RS-6	BUREAU	28	27
	PLOT SCALE = 100.0000' / in.	CHECKED -	REVISED -												
	PLOT DATE = 6/6/2014	DATE -	REVISED -												
											CONTRACT NO. 66C34				
											ILLINOIS FED. AID PROJECT				

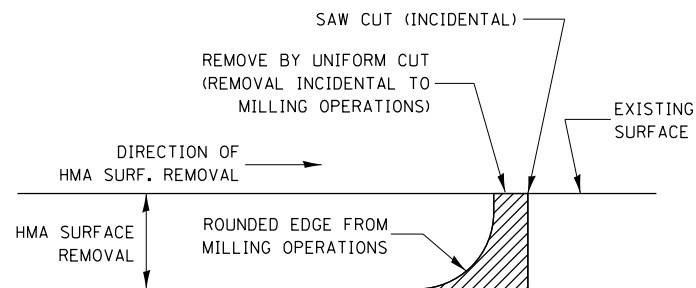


PLAN AT SIDE ROADS



PLAN AT PRIVATE & COMMERCIAL ENTRANCES

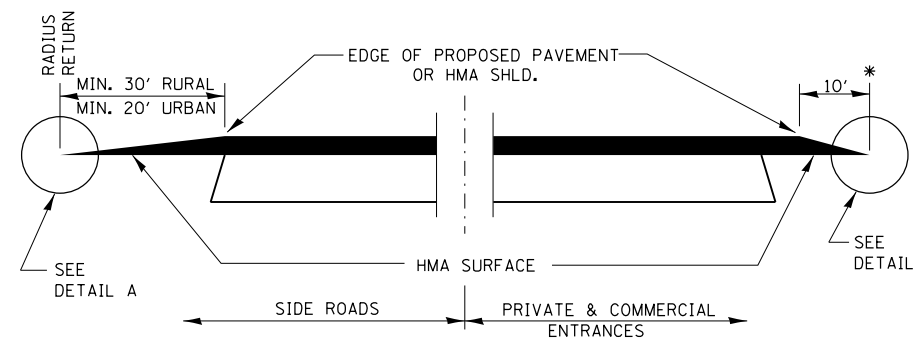
(DO NOT RESURFACE FIELD ENTRANCES)



NOTE:

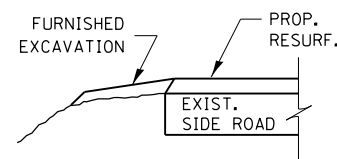
WHEN MILLING OPERATIONS PRODUCE A ROUNDED EDGE, THEN A SAW CUT SHALL BE USED TO MANUFACTURE A PERPENDICULAR EDGE AS SHOWN IN THE DETAIL. THE ENGINEER SHALL BE THE SOLE JUDGE CONCERNING THE USE OF THIS DETAIL

HMA DETAIL AT BUTT JOINTS



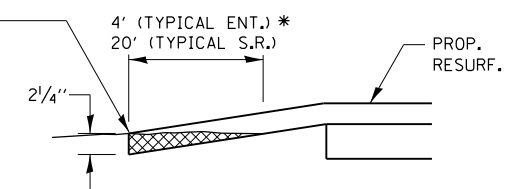
SECTION A-A

DETAILS AT ENTRANCES & SIDE ROADS



SECTION B-B

THE COST OF REMOVAL AT EXISTING HMA OR P.C.C. LOCATIONS SHALL BE PAID FOR PER SQ. YD. BY THE APPROPRIATE PAY ITEM. REMOVAL AT THE EXISTING AGG. LOCATIONS SHALL BE INCIDENTAL TO THE HMA. A-3 LOCATIONS SHALL BE FEATHER TAPERED.



DETAIL A

FILE NAME =	USER NAME = duncanbd	DESIGNED -	REVISED -	STATE OF ILLINOIS DEPARTMENT OF TRANSPORTATION	DETAILS			F.A.P. RTE.	SECTION	COUNTY	TOTAL SHEETS	SHEET NO.
et:\pw\work\p\idot\duncanbd\0304146\0366C34-sht-details.dgn		DRAWN -	REVISED -		646	(103,104)RS-6	BUREAU	28	28			
PLOT SCALE = 100.0000' / in.		CHECKED -	REVISED -		CONTRACT NO. 66C34							
PLOT DATE = 6/6/2014		DATE -	REVISED -		ILLINOIS FED. AID PROJECT							
					SCALE:	SHEET	OF	SHEETS	STA.	TO	STA.	