

F.A.I. RTE.	SECTION	COUNTY	TOTAL SHEETS	SHEET NO.
55	(53-4,4(1),3(1),3,2)I-4	LIVINGSTON	8	1
		ILLINOIS	CONTRACT NO. 66D48	

- INDEX OF SHEETS
- 1 COVER SHEET
 - 2 GENERAL NOTES
 - 3-4 SUMMARY OF QUANTITIES
 - 5 TYPICAL SECTIONS
 - 6 SCHEDULES
 - 7-8 DETAILS

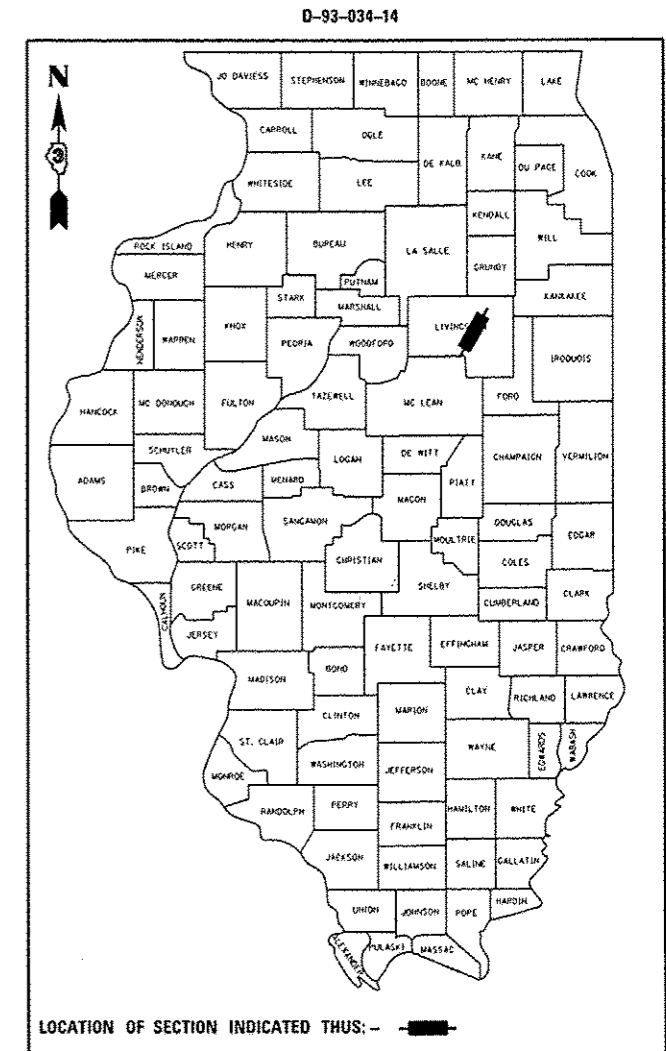
STATE OF ILLINOIS
DEPARTMENT OF TRANSPORTATION
DIVISION OF HIGHWAYS

**PROPOSED
HIGHWAY PLANS**

FAI ROUTE 55 (I-55)
SECTION (53-4,4(1),3(1),3,2)I-4

MICROSURFACING CENTERLINE
LIVINGSTON COUNTY

C-93-056-14



STATION EQUATION:
477 + 82.67BK = 470 + 23.55AH

SN 053-0112
STA 391 + 32.2

SN 053-0138
STA 334 + 98.51

SN 053-0113
STA 280 + 46.06

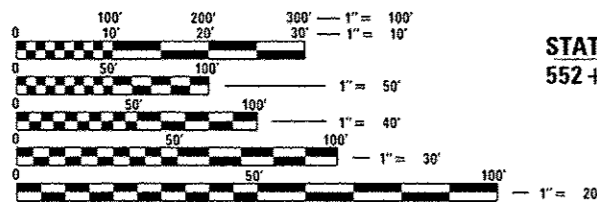
STATION EQUATION:
552 + 08.35BK = 121 + 28.60AH

BEGIN PROJECT
STA 406 + 64.73

END PROJECT
STA 655 + 49.51

SN 053-0141
STA 635 + 00

SN 053-0140 & 053-0139
STA 562 + 15.42
OMISSION
STA 561 + 69.71 TO STA 562 + 61.13



FULL SIZE PLANS HAVE BEEN PREPARED USING STANDARD ENGINEERING SCALES. REDUCED SIZED PLANS WILL NOT CONFORM TO STANDARD SCALES. IN MAKING MEASUREMENTS ON REDUCED PLANS, THE ABOVE SCALES MAY BE USED.

J.U.L.I.E.
JOINT UTILITY LOCATION INFORMATION FOR EXCAVATION
1-800-892-0123
OR 811

PROJECT ENGINEER: JOE KANNEL, PE
UNIT CHIEF: MICHELE LINDEMANN, PE

CONTRACT NO. 66D48

GROSS LENGTH = 68632.23 FT. = 12.999 MILE
NET LENGTH = 68723.65 FT. = 13.016 MILE

INTERSTATE
2013 ADT = 19,000
P.V. = 68.8%
S.U. = 3.8%
M.U. = 27.4%

STATE OF ILLINOIS
DEPARTMENT OF TRANSPORTATION
DIVISION OF HIGHWAYS

SUBMITTED May 9 20 14
Paul Costa, P.E.
DEPUTY DIRECTOR OF HIGHWAYS, REGION ENGINEER

June 27 20 14
John D. Baranzelli, P.E.
ENGINEER OF DESIGN AND ENVIRONMENT

June 27 20 14
Omer Osman, P.E.
DIRECTOR OF HIGHWAYS, CHIEF ENGINEER

PRINTED BY THE AUTHORITY
OF THE STATE OF ILLINOIS

LIST OF ILLINOIS DOT HIGHWAY STANDARDS

000001-06	STANDARD SYMBOLS, ABBREVIATIONS AND PATTERNS
001006	DECIMAL OF AN INCH AND OF A FOOT
701101-04	OFF-ROAD OPERATIONS MULTILANE, 15' (4.5 m) TO 24" (600 mm) FROM PAVEMENT EDGE
701106-02	OFF-ROAD OPERATIONS, MULTILANE, MORE THAN 15' (4.5 m) AWAY
701401-08	LANE CLOSURE, FREEWAY/EXPRESSWAY
701426-06	LANE CLOSURE, MULTILANE INTERMITTENT OR MOVING OPERATION, FOR SPEEDS ≥ 45 MPH
701901-03	TRAFFIC CONTROL DEVICES
780001-04	TYPICAL PAVEMENT MARKINGS
781001-03	TYPICAL APPLICATIONS RAISED REFLECTIVE PAVEMENT MARKERS

GENERAL NOTES

THE ENGINEER WILL BE THE SOLE JUDGE CONCERNING CURING TIME FOR THE MICRO-SURFACING AND WHEN THE ROADWAY WILL BE OPENED TO TRAFFIC.

ANY REFERENCE TO A STANDARD IN THESE PLANS SHALL BE INTERPRETED TO MEAN THE EDITION AS INDICATED BY THE SUBNUMBER SHOWN IN THE LIST OF STANDARDS OR THE COPY INCLUDED IN THESE PLANS.

THE AGGREGATES FOR THE SURFACE LIFT OF MICRO-SURFACING SHALL MEET THE FRICTION AGGREGATE REQUIREMENTS FOR MIXTURE D IN ARTICLE 1004.03(a).

THE FOLLOWING RATES OF APPLICATION HAVE BEEN USED IN CALCULATING PLAN QUANTITIES:

SHORT TERM PAVEMENT MARKING	10	FT /100 FT OF APPLICATION
MIX FOR CRACKS, JTS & FLGWYS	0.0003	TONS / SQ YD
MICRO-SURFACING, SINGLE PASS	20	LBS / SQ YD
FOG COAT, IL-4.75	0.025	LBS / SQ FT

ONLY THE PASSING LANE IS TO BE CLOSED FOR THE CENTERLINE WORK.

THE TEMPORARY PAVEMENT MARKING SHALL BE PLACED 3' OFF THE CENTERLINE IN DRIVING LANE PRIOR TO REMOVING EXISTING LINE.

THE CONTRACTOR SHALL CONTACT JULIE AT LEAST 48 HOURS PRIOR TO EXCAVATION TO DETERMINE WHICH UTILITIES ARE IN THE AREA.

STATE OF ILLINOIS
DEPARTMENT OF TRANSPORTATION
DISTRICT THREE

PREPARED BY: *D. Beaulieu*
DISTRICT STUDIES & PLANS ENGINEER

DATE: 5-9-14

EXAMINED BY: *Herbert K. Jager*
DISTRICT CONSTRUCTION ENGINEER

Wayne Z. Phillips
DISTRICT MATERIALS ENGINEER

Bruce A. Wheeler
DISTRICT OPERATIONS ENGINEER

FILE NAME *	USER NAME * carpentardj	DESIGNED -	REVISED -	STATE OF ILLINOIS DEPARTMENT OF TRANSPORTATION	GENERAL NOTES	F.A.I. RTE.	SECTION	COUNTY	TOTAL SHEETS	SHEET NO.
ci:\pw_vork\p\widot\carpentardj\d0374121\666048-shr-details.dgn	DRAWN -	REVISED -	55			(53-4,41),3(1),3,2(1)-4	LIVINGSTON	8	2	
PLOT SCALE * 1/8"=1'-0"	CHECKED -	REVISED -	CONTRACT NO. 66048							
PLOT DATE * 4/30/2014	DATE -	REVISED -	ILLINOIS FED. AID PROJECT							

CODE NO.	ITEM	UNIT	TOTAL QUANTITY	CONSTR. CODE	
				100% STATE	ROADWAY 0005 RURAL
40600400	MIXTURE FOR CRACKS, JOINTS, AND FLANGEWAYS	TON	9.2	9.2	
67100100	MOBILIZATION	L SUM	1	1	
70106800	CHANGEABLE MESSAGE SIGN	CAL MO	2	2	
70300240	TEMPORARY PAVEMENT MARKING - LINE 6"	FOOT	34318	34318	
70301000	WORK ZONE PAVEMENT MARKING REMOVAL	SO FT	17160	17160	
78003130	PERFORMED PLASTIC PAVEMENT MARKING, TYPE B - LINE 6"	FOOT	34318	34318	
78100100	RAISED REFLECTIVE PAVEMENT MARKER	EACH	3432	3432	
78300100	PAVEMENT MARKING REMOVAL	SO FT	17160	17160	
78300200	RAISED REFLECTIVE PAVEMENT MARKER REMOVAL	EACH	3432	3432	
Z0063804	MICRO-SURFACING, SINGLE PASS, TYPE II, MIXTURE D	SO YD	30502	30502	
X0326218	FIBER-MODIFIED ASPHALT CRACK SEALING	FOOT	137264	137264	
X0326880	MESSAGE BOARD VEHICLE DRIVER	HOUR	60	60	
X0326907	PORTABLE, VEHICLE MOUNTED, CHANGEABLE MESSAGE SIGN	CAL MO	2	2	
X4060110	BITUMINOUS MATERIALS (PRIME COAT)	POUND	13726	13726	

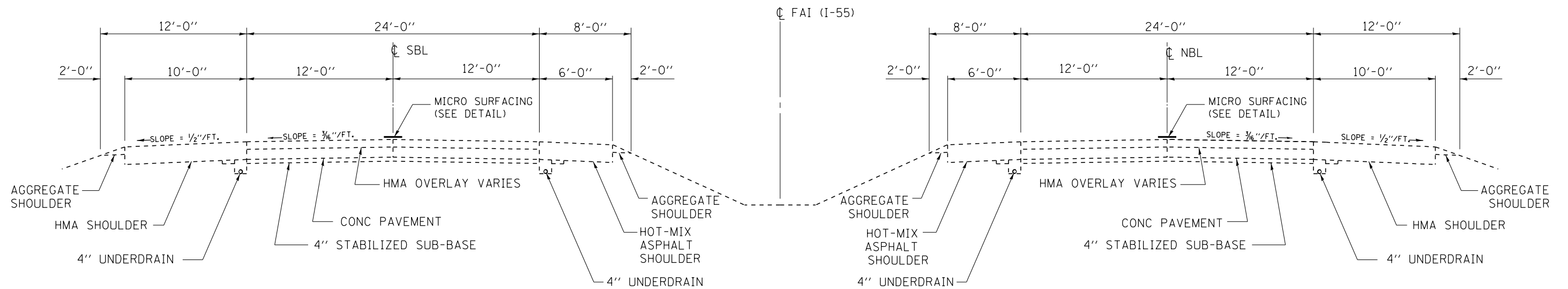
• SPECIALTY ITEMS SPECIALTY ITEMS

FILE NAME =	USER NAME = carpentardj	DESIGNED -	REVISED -	STATE OF ILLINOIS DEPARTMENT OF TRANSPORTATION	SUMMARY OF QUANTITIES	P.A.I. RTE.	SECTION	COUNTY	TOTAL SHEETS	SHEET NO.	
c:\pwork\pwork\dot\carpentardj\d0374121\	366048-ht-500.dgn	DRAWN -	REVISED -			55	153-4,4(1),3(1),3,2(1)-4	LIVINGSTON	8	3	
PLOT SCALE = 1/8" = 100.0000' / in.	CHECKED -	REVISED -	SCALE: _____			SHEET NO. _____ OF _____ SHEETS	STA. _____ TO STA. _____	ILLINOIS FED. AID PROJECT			
PLOT DATE = 5/9/2014	DATE -	REVISED -	CONTRACT NO. 66048								

CODE NO.	ITEM	UNIT	TOTAL QUANTITY	CONSTR. CODE	
				100% STATE	ROADWAY 0005 RURAL
X7010410	SPEED DISPLAY TRAILER	CAL MO	2		2
X7010805	TRAFFIC CONTROL AND PROTECTION, STANDARD T01401 (SPECIAL)	L SUM	1		1

• SPECIALTY ITEMS

FILE NAME =	USER NAME = carpentendj	DESIGNED -	REVISED -	STATE OF ILLINOIS DEPARTMENT OF TRANSPORTATION	SUMMARY OF QUANTITIES		F.A.I. RTE.	SECTION	COUNTY	TOTAL SHEETS	SHEET NO.	
o:\p\work\p\dot\carpentendj\09374121\366048-shl-500.dgn	366048-shl-500.dgn	DRAWN -	REVISED -		SCALE: _____	SHEET NO. _____ OF _____ SHEETS	STA. _____ TO STA. _____	55	(S1-4.411,311,3.21)-A	LIVINGSTON	8	4
PLOT SCALE = 1/8" = 1'-0"	CHECKED -	REVISED -	REVISED -								CONTRACT NO. 66048	
PLOT DATE = 5/9/2014	DATE -	REVISED -	REVISED -								ILLINOIS FED. AID PROJECT	

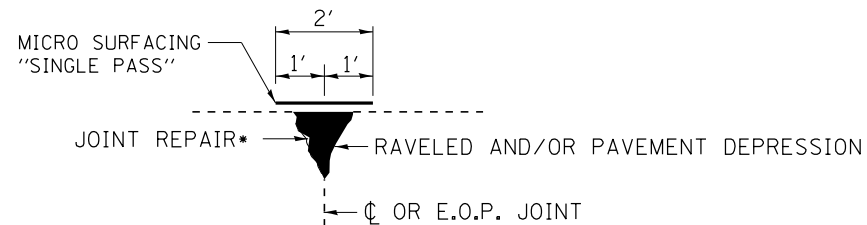


TYPICAL SECTION F.A.I. 55

STA 406+64.73 TO STA 655+49.51

OMISSION:
 SN 053-0139 & 053-0140
 STA 561+69.71 TO STA 562+61.13

STATION EQUATIONS:
 552+08.35BK = 121+28.60AH
 477+82.67BK = 470+23.55AH



MICRO-SURFACING DETAIL

* FIBER-MODIFIED ASPHALT CRACK SEALING

NOTES

- 1) MICRO-SURFACING SHALL BE LOCATED AT THE CENTERLINE OF PAVEMENT JOINT. ACTUAL LOCATIONS SHALL BE FIELD DETERMINED BY THE ENGINEER PRIOR TO THE CONTRACTOR BEGINNING HIS/HER CONSTRUCTION OPERATIONS.
- 2) THE TEMPORARY STRIPING SHALL BE OFFSET 3' FROM THE CENTERLINE, IN THE DRIVING LANE.
- 3) OFFSET OF THE PERMANENT CENTERLINE PAVEMENT STRIPING SHALL BE FIELD DETERMINED BY THE ENGINEER.

FILE NAME =	USER NAME = carpenterdj	DESIGNED -	REVISED -
ci:\pw\work\p\idot\carpenterdj\d037412\0366D48-sht-details.dgn		DRAWN -	REVISED -
	PLOT SCALE = 100.0000' / 1" =	CHECKED -	REVISED -
	PLOT DATE = 5/9/2014	DATE -	REVISED -

STATE OF ILLINOIS
 DEPARTMENT OF TRANSPORTATION

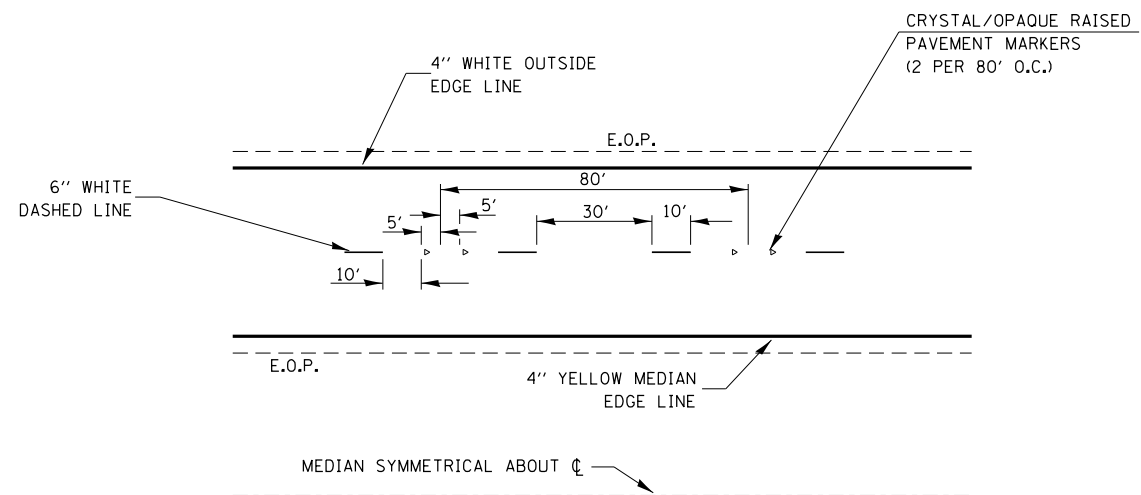
TYPICALS

SCALE: _____ SHEET _____ OF _____ SHEETS STA. _____ TO STA. _____

F.A.I. RTE.	SECTION	COUNTY	TOTAL SHEETS	SHEET NO.
55	(53-4,4(1),3(1),3,2)I-4	LIVINGSTON	8	5
CONTRACT NO. 66D48				
ILLINOIS FED. AID PROJECT				

MAINLINE												
LOCATION STA. TO STA.	LENGTH	TEMP	PREFORMED	PVMT	WORK ZONE	MIX FOR	FIBER MOD.	BITUMINOUS	MICRO-	RAISED	RAISED	
		PVMT MARKING LINE 6"	PLASTIC PVMT MARK - LINE 6"	MARKING REMOVAL	PVMT MARKING REMOVAL	CRACKS, JOINTS, & FLANGEWAYS	ASPHALT CRACK SEALING	MATERIALS (PRIME COAT)	SURFACING SINGLE PASS TYPE II MIX D	REFLECTIVE PVMT MARKER	REFL PVMT MARKER REMOVAL	
	FT	FT	FT	SQ FT	SQ FT	TON	FT	POUND	SQ YD	EACH	EACH	
NORTHBOUND												
406+64.73	552+08.35	14543.62	3636	3636	1818	1818	1.0	14544	1454	3232	364	364
552+08.35BK	121+28.60AH	STATION EQUATION										
121+28.60	477+82.67 BK	35654.07	8914	8914	4457	4457	2.4	35654	3565	7923	891	891
477+82.67BK	470+23.55AH	STATION EQUATION										
470+23.55AH	561+69.71	9146.16	2287	2287	1144	1144	0.6	9146	915	2032	229	229
561+69.71	562+61.13	OMISSION SN 053-0140										
562+61.13	655+49.51	9288.38	2322	2322	1161	1161	0.6	9288	929	2064	232	232
SOUTHBOUND												
406+64.73	552+08.35	14543.62	3636	3636	1818	1818	1.0	14544	1454	3232	364	364
552+08.35BK	121+28.60AH	STATION EQUATION										
121+28.60	477+82.67 BK	35654.07	8914	8914	4457	4457	2.4	35654	3565	7923	891	891
477+82.67BK	470+23.55AH	STATION EQUATION										
470+23.55AH	561+69.71	9146.16	2287	2287	1144	1144	0.6	9146	915	2032	229	229
561+69.71	562+61.13	OMISSION SN 053-0140										
562+61.13	655+49.51	9288.38	2322	2322	1161	1161	0.6	9288	929	2064	232	232
TOTAL			34318	34318	17160	17160	9.2	137264	13726	30502	3432	3432

FILE NAME =	USER NAME = carpenterdj	DESIGNED -	REVISED -	STATE OF ILLINOIS DEPARTMENT OF TRANSPORTATION	SCHEDULES	F.A.I. RTE.	SECTION	COUNTY	TOTAL SHEETS	SHEET NO.
c:\pwork\pwork\carpenterdj\d037412\0366048-sht-details.dgn	DRAWN -	REVISED -	55			(53-4,4(1),3(1),3,2)I-4	LIVINGSTON	8	6	
PLOT SCALE = 100.0000' / 1" .	CHECKED -	REVISED -	CONTRACT NO. 66D48							
PLOT DATE = 5/9/2014	DATE -	REVISED -	ILLINOIS FED. AID PROJECT							



TYPICAL PAVEMENT MARKINGS

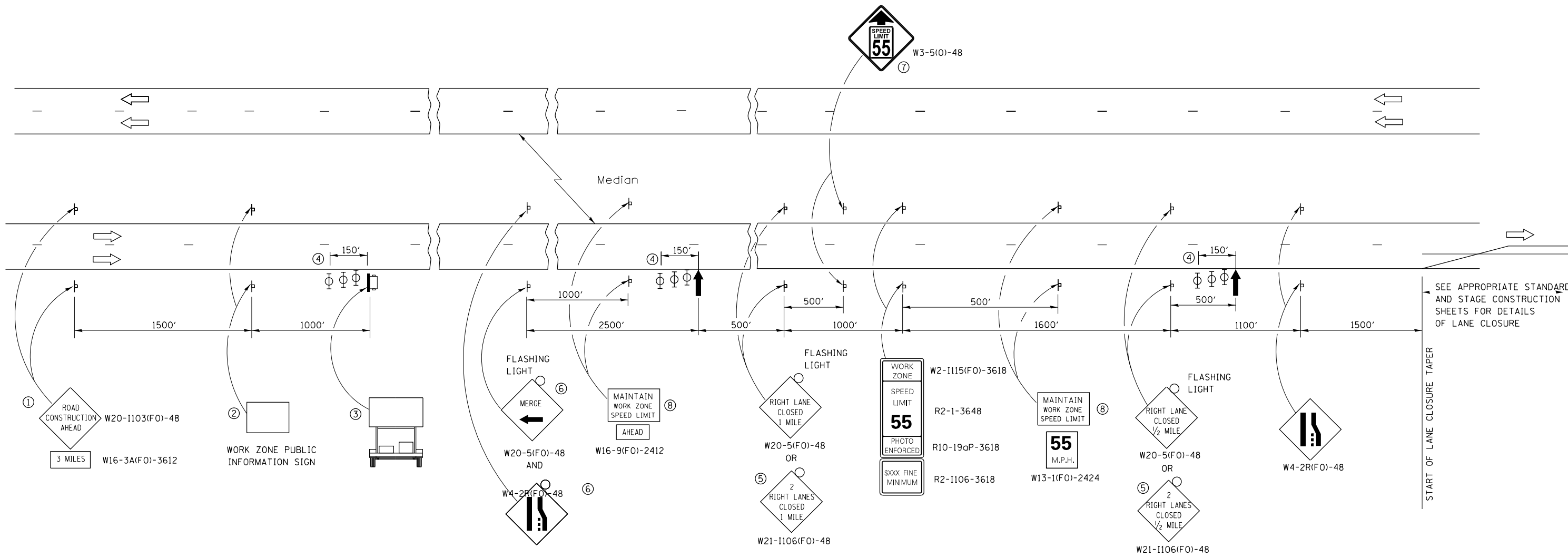
FILE NAME =	USER NAME = carpenterdj	DESIGNED -	REVISED -
ei:\pw\work\p\dot\carpenterdj\d0374121\0366D48-sht-details.dgn		DRAWN -	REVISED -
		CHECKED -	REVISED -
		DATE -	REVISED -

**STATE OF ILLINOIS
DEPARTMENT OF TRANSPORTATION**

DETAILS

SCALE: _____ SHEET ____ OF ____ SHEETS STA. _____ TO STA. _____

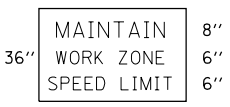
F.A.I. RTE.	SECTION	COUNTY	TOTAL SHEETS	SHEET NO.
55	(53-4,4(1),3(1),3,2)I-4	LIVINGSTON	8	7
			CONTRACT NO. 66D48	
ILLINOIS FED. AID PROJECT				



SEE APPROPRIATE STANDARD AND STAGE CONSTRUCTION SHEETS FOR DETAILS OF LANE CLOSURE

START OF LANE CLOSURE TAPER

- ① THE ROAD CONSTRUCTION AHEAD SIGN SHALL BE LOCATED 3 MILES IN ADVANCE OF THE PROJECT LIMITS.
- ② THE MESSAGE AND SIZE OF THE WORK ZONE PUBLIC INFORMATION SIGN SHALL BE AS SPECIFIED BY THE DEPARTMENT.
- ③ TO BE PLACED IN THE MEDIAN WHEN FEASIBLE. THE MESSAGE BOARD SHALL BE USED TO DISPLAY STATUS OF LANES WITHIN THE PROJECT. THE PRIMARY MESSAGES SHALL BE:
 "RIGHT LANE CLOSED" / " x MILES AHEAD"
 "LEFT LANE CLOSED" / " x MILES AHEAD"
 "ALL LANES OPEN"
- ④ THREE, TYPE II BARRICADES, DRUMS, OR VERTICAL BARRICADES AT 50' CENTERS.
- ⑤ THIS SIGN SHALL BE USED WHEN 2 LANES ARE CLOSED.
- ⑥ WHEN THE LEFT LANE IS CLOSED, SWITCH THESE TWO SIGNS AND THE DIRECTION OF THE MERGE ARROW.
- ⑦ THIS SIGN SHALL ONLY BE USED IF THE EXISTING SPEED LIMIT IS GREATER THAN 65 MPH.
- ⑧ 48"x36" FLUORESCENT ORANGE SIGN WITH BLACK LETTERS.
48"



- ↑ ARROW BOARD
- ☐ PORTABLE CHANGEABLE MESSAGE SIGN
- ⊥ SIGN
- ⊕ TYPE II BARRICADE, DRUM, OR VERTICAL BARRICADE WITH MONODIRECTIONAL FLASHING LIGHT

GENERAL NOTE:

THIS STANDARD IS USED WHERE AT ANY TIME A LANE IS CLOSED ON A FREEWAY/EXPRESSWAY.

WHEN THE LEFT LANE IS CLOSED, LEFT LANE CLOSED SIGNS SHALL BE SUBSTITUTED FOR THE RIGHT LANE CLOSED SIGNS.

THE FIRST TWO SIGNS AND THE MESSAGE BOARD ARE STATIONARY. THE OTHER SIGNS AND ARROWBOARDS SHALL BE MOVED AS NECESSARY TO MAINTAIN THE REQUIRED DISTANCE FROM THE START OF THE LANE CLOSURE TAPER(S).

SEE SPECIAL PROVISIONS.

ALL DIMENSIONS ARE IN INCHES UNLESS OTHERWISE SHOWN.

FILE NAME =	USER NAME = carpenterdj	DESIGNED - _____	REVISED - _____	STATE OF ILLINOIS DEPARTMENT OF TRANSPORTATION	STANDARD 701400 (SPECIAL)	F.A.I. RTE.	SECTION	COUNTY	TOTAL SHEETS	SHEET NO.	
ei:\pw\work\p\idot\carpenterdj\d0374121\0366048-sht-details.dgn	PLOT SCALE = 100.0000' / in.	DRAWN - _____	REVISED - _____			55	(53-4,4(1),3(1),3,2)I-4	LIVINGSTON	8	8	
\$MODELNAME\$	PLOT DATE = 5/9/2014	CHECKED - _____	REVISED - _____			CONTRACT NO. 66D48					
						ILLINOIS FED. AID PROJECT					