

F.A.P. RTE.	SECTION	COUNTY	TOTAL SHEETS	SHEET NO.
317	(36,21)RS	IROQUOIS	16	1
		ILLINOIS	CONTRACT NO. 66D69	

STATE OF ILLINOIS
DEPARTMENT OF TRANSPORTATION
DIVISION OF HIGHWAYS

**PROPOSED
HIGHWAY PLANS**

FAP ROUTE 317 (U.S. 24/U.S. 45)
SECTION (36,21)RS

**3P MILLING AND RESURFACING
IROQUOIS COUNTY**

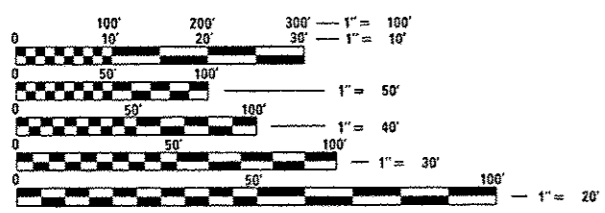
C-93-091-14

INDEX OF SHEETS

- 1 COVER SHEET
- 2 GENERAL NOTES
- 3-5 SUMMARY OF QUANTITIES
- 6-7 TYPICAL SECTIONS
- 8-9 SCHEDULES
- 10-13 DETAILS
- 14-16 EXISTING PAVEMENT MARKINGS

HIGHWAY STANDARDS

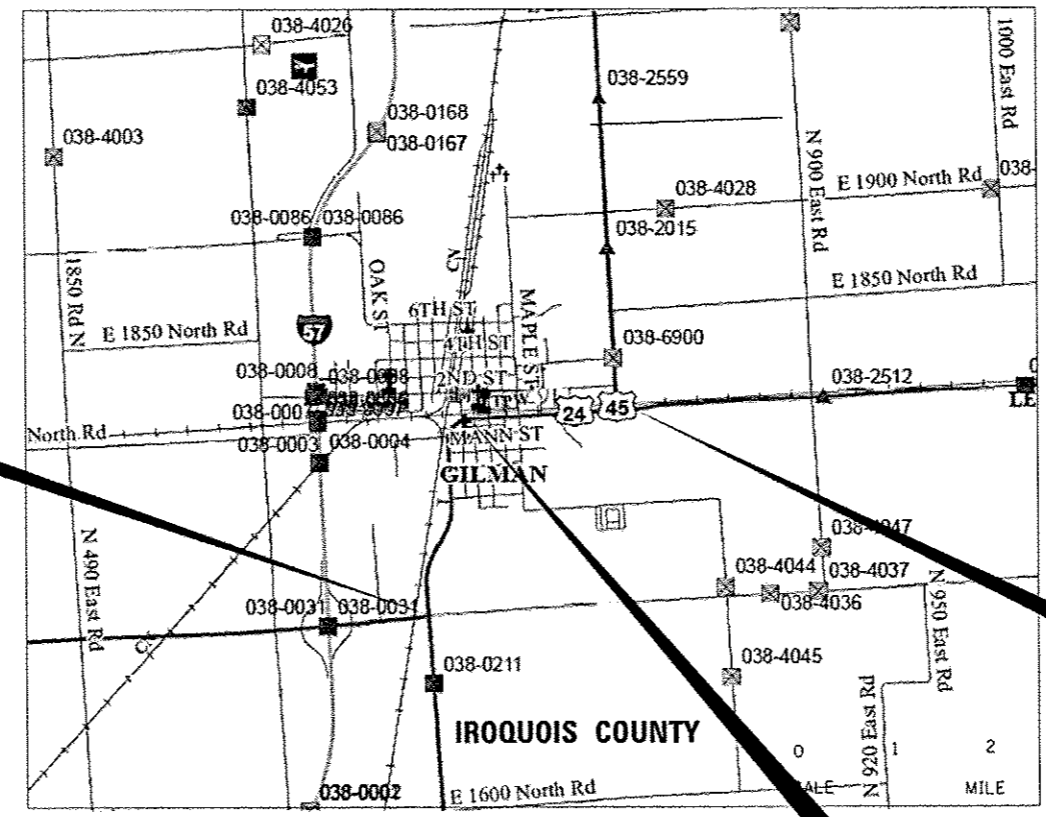
- 000001-06 STANDARD SYMBOLS, ABBREVIATIONS AND PATTERNS
- 001008 DECIMAL OF AN INCH AND OF A FOOT
- 424001-07 PERPENDICULAR CURB RAMPS FOR SIDEWALKS
- 606001-05 CONCRETE CURB TYPE B AND COMBINATION CONCRETE CURB AND GUTTER
- 667101-02 PERMANENT SURVEY MARKERS
- 701006-05 OFF-ROAD OPERATIONS 2L, 2W, 15' TO 24" FROM PAVEMENT EDGE
- 701301-04 LANE CLOSURE, 2L, 2W, SHORT TIME OPERATIONS
- 701306-03 LANE CLOSURE, 2L, 2W, SLOW MOVING OPERATIONS DAY ONLY, FOR SPEEDS ≥ 45 MPH
- 701311-03 LANE CLOSURE, 2L, 2W, MOVING OPERATIONS - DAY ONLY
- 701501-06 URBAN LANE CLOSURE, 2L, 2W, UNDIVIDED
- 701801-05 LANE CLOSURE, MULTILANE 1W OR 2W CROSSWALK OR SIDEWALK CLOSURE
- 701901-03 TRAFFIC CONTROL DEVICES
- 780001-04 TYPICAL PAVEMENT MARKINGS
- 781001-03 TYPICAL APPLICATIONS RAISED REFLECTIVE PAVEMENT MARKERS
- 782001 PRISMATIC CURB REFLECTORS



FULL SIZE PLANS HAVE BEEN PREPARED USING STANDARD ENGINEERING SCALES. REDUCED SIZED PLANS WILL NOT CONFORM TO STANDARD SCALES. IN MAKING MEASUREMENTS ON REDUCED PLANS, THE ABOVE SCALES MAY BE USED.

J.U.L.I.E.
JOINT UTILITY LOCATION INFORMATION FOR EXCAVATION
1-800-892-0123
OR 811

PROJECT ENGINEER: JOE KANNEL, P.E.
UNIT CHIEF: DUANE LUKKARI, P.E.
DISTRICT 3 NO. (815) 434-6131
CONTRACT NO. 66D69



PROJECT BEGINS
STA. 4+81.40
U.S. 24/U.S. 45



PROJECT ENDS
STA. 107+68
U.S. 24/U.S. 45

STA. EQUATION:
STA. 60+72.27 BACK=
STA. 60+79.68 AHEAD

GROSS LENGTH = 9,924 FT. = 1.88 MILES
NET LENGTH = 9,456 FT. = 1.79 MILES



FUNCTIONAL CLASSIFICATION
OTHER PRINCIPAL ARTERIAL
2013 ADT = 6150
P.V. = 88% S.U. = 4.5% M.U. = 6.9%

STATE OF ILLINOIS
DEPARTMENT OF TRANSPORTATION
DIVISION OF HIGHWAYS

SUBMITTED 6/10 20 14
Paul A. Jucke
DEPUTY DIRECTOR OF HIGHWAYS, REGION ENGINEER

June 27 20 14
John D. Baranzelli, P.E.
ENGINEER OF DESIGN AND ENVIRONMENT

June 27 20 14
Omer Osman, P.E.
DIRECTOR OF HIGHWAYS, CHIEF ENGINEER

**PRINTED BY THE AUTHORITY
OF THE STATE OF ILLINOIS**