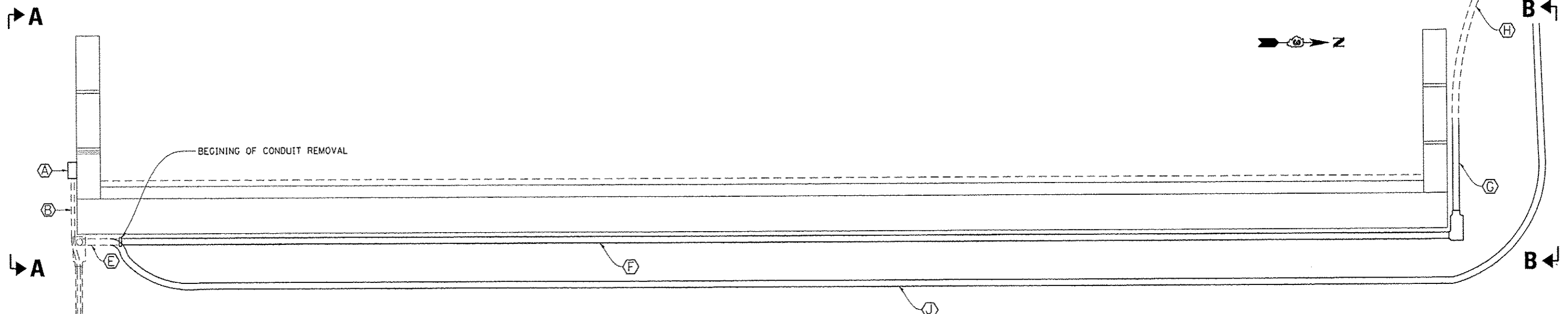
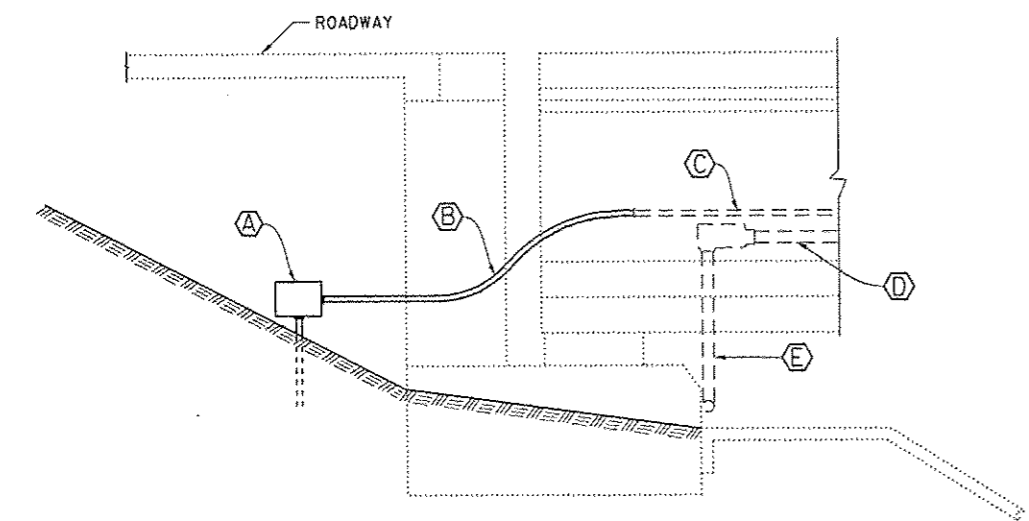


ELEVATION
AT W. ABUT.

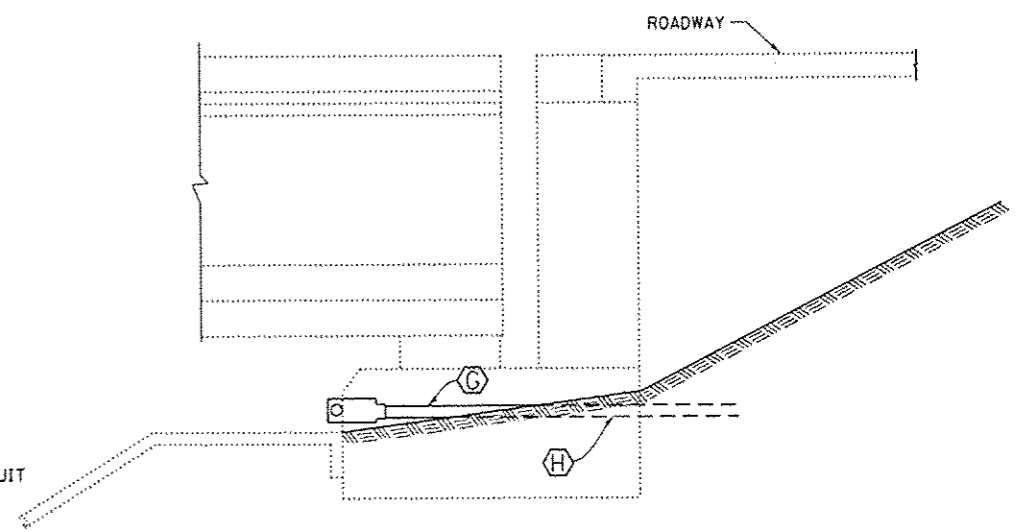


PLAN
AT W. ABUT.

- (A) REMOVE AND REPLACE JUNCTION BOX (RE-SPLICE EXISTING ELECTRICAL WIRE)
- (B) REMOVE AND REINSTALL EXISTING FLEXIBLE ELECTRICAL CONDUIT
1) REMOVE AND REPLACE CONNECTION FITTINGS
2) REMOVE AND REINSTALL EXISTING WIRE (EXISTING WIRE SHALL BE COILED AND PROTECTED FROM WEATHER CONDITIONS DURING ABUT. RECONSTRUCTION)
- (C) EXISTING 1" Ø GALVANIZED ELECTRICAL CONDUIT (TO REMAIN IN PLACE)
- (D) EXISTING 2" Ø ELECTRICAL CONDUIT (TO REMAIN IN PLACE)
1) REMOVE AND REPLACE ELECTRICAL CABLE IN CONDUIT
- (E) EXISTING 2" Ø FLEXIBLE ELECTRICAL CONDUIT (TO REMAIN IN PLACE)
REMOVE ELECTRICAL CABLE FROM CONDUIT
- (F) REMOVE AND REPLACE 2" Ø GALVANIZED ELECTRICAL CONDUIT
REMOVE AND REPLACE ELECTRICAL CABLE IN CONDUIT
- (G) REMOVE AND REPLACE 10' OF 2" Ø GALVANIZED ELECTRICAL CONDUIT
REMOVE AND REPLACE ELECTRICAL CABLE IN CONDUIT
THIS WORK SHALL BE INCLUDED IN THE COST OF THE CONDUIT ATTACHED TO STRUCTURE ITEMS.
- (H) REMOVE AND REPLACE ELECTRICAL CABLE IN CONDUIT
- (J) "MAINTAINING EXISTING LIGHTING SYSTEM"
1) INSTALLATION AND REMOVAL OF 2" Ø FLEXIBLE NON-METALIC ELECTRICAL CONDUIT
2) INSTALLATION AND REMOVAL OF "EXISTING" ELECTRICAL CABLE



VIEW A-A
AT SW CORNER
(W. ABUT.)



VIEW B-B
AT NW CORNER
(W. ABUT.)

FILE NAME : c:\pwwork\p-j\d\woodshankr1\d0368312\	USER NAME = woodshankr1	DESIGNED - RON WOODSHANK	REVISED - RW 4/15/2014	STATE OF ILLINOIS DEPARTMENT OF TRANSPORTATION	ELECTRICAL DETAILS	F.A.P. RTE. 697	SECTION (27-1HB-2)IR	COUNTY FORD	TOTAL SHEETS 27	SHEET NO. 12
	366D74-shd-detailed.dgn	DRAWN - RON WOODSHANK	REVISED -			CONTRACT NO. 66D74	ILLINOIS FED. AID PROJECT			
	PLOT SCALE = 1/8" = 1' IN.	CHECKED - YOGESH PATEL	REVISED -	SCALE: _____	SHEET NO. 1 OF 1 SHEETS	STA. _____ TO STA. _____				
	PLOT DATE = 5/19/2014	DATE - 2/10/2014	REVISED -							