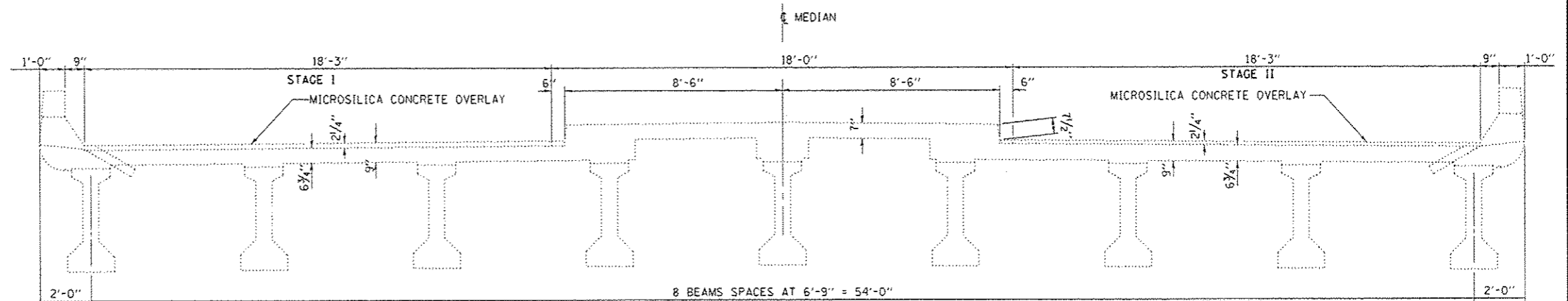
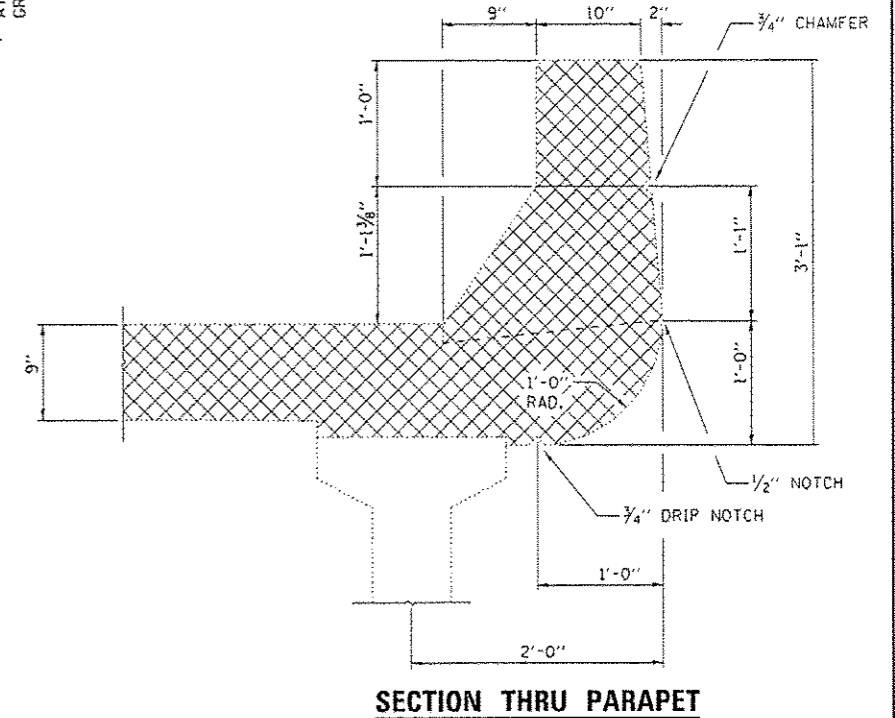
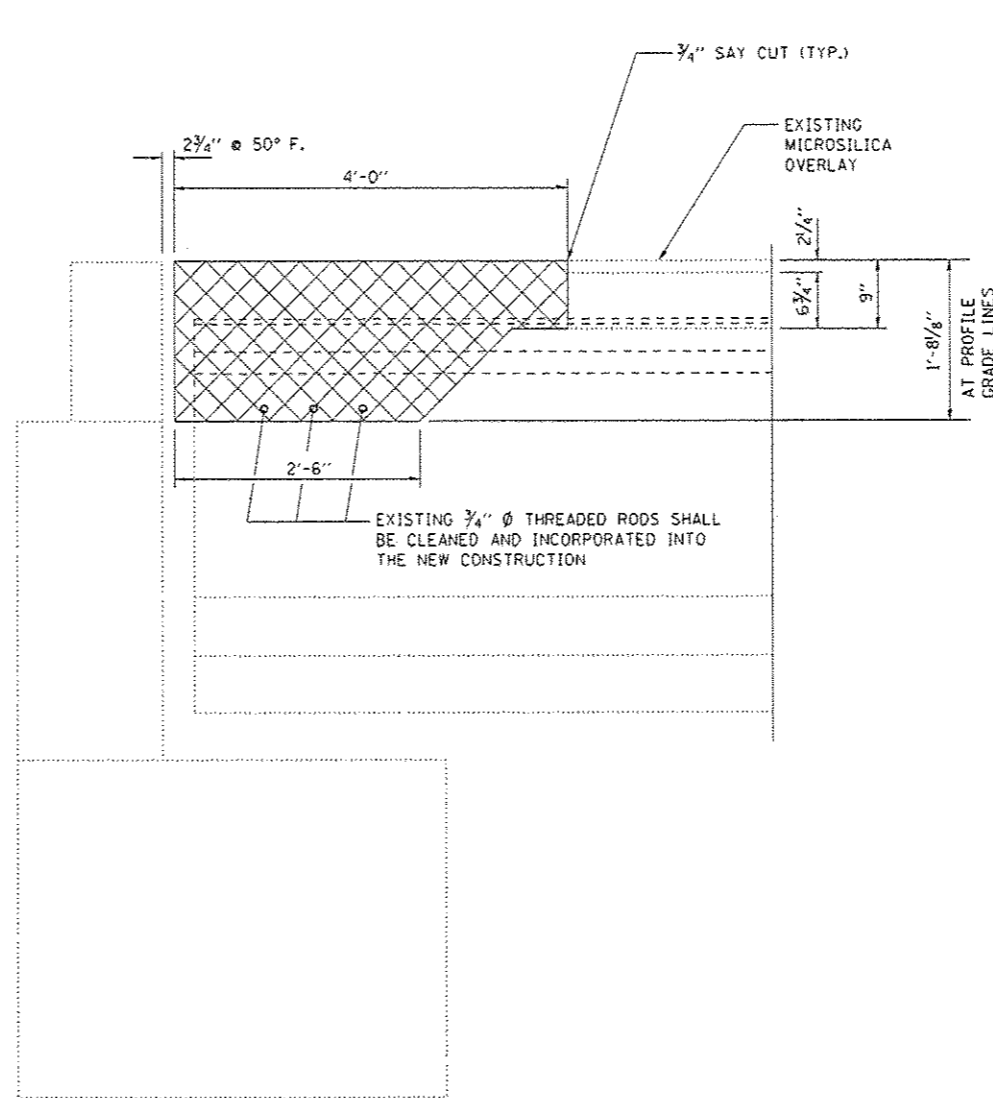
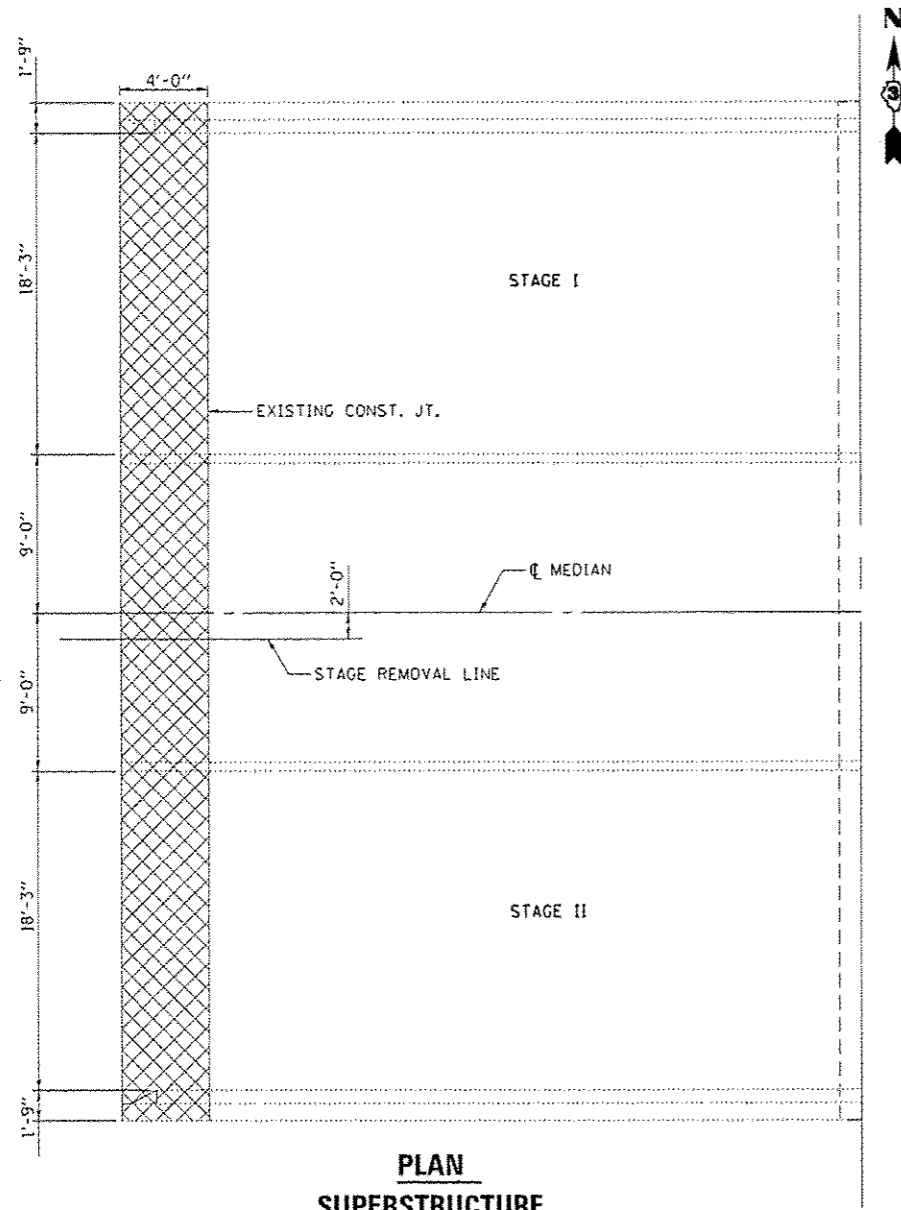


**NOTES**

THE CONTRACTOR SHALL USE EXTREME CARE DURING CONCRETE REMOVAL SO AS NOT TO DAMAGE THE PPC I-BEAM.



CONCRETE REMOVAL

FILE NAME =	USER NAME = woodshankr1	DESIGNED - RON WOODSHANK	REVISED - 6/21/2014
c:\pvc\work\p1\dot\woodshankr1\02388312\	366074-eh1-details.dgn	DRAWN - RON WOODSHANK	REVISED -
	PLOT SCALE = 100.00 1/316	CHECKED - YOGESH PATEL	REVISED -
	PLOT DATE = 6/21/2014	DATE - 2/10/2014	REVISED -

STATE OF ILLINOIS  
DEPARTMENT OF TRANSPORTATION

**SUPERSTRUCTURE REMOVAL DETAILS  
FOR STRUCTURE NO. 027-0010**

SCALE: \_\_\_\_\_ SHEET NO. 2 OF 13 SHEETS STA. \_\_\_\_\_ TO STA. \_\_\_\_\_

F.A.P. RT#	SECTION	COUNTY	TOTAL SHEETS	SHEET NO.
697	(27-1HB-2)IR	FORD	27	16
CONTRACT NO. 66074			ILLINOIS FED. AID PROJECT	