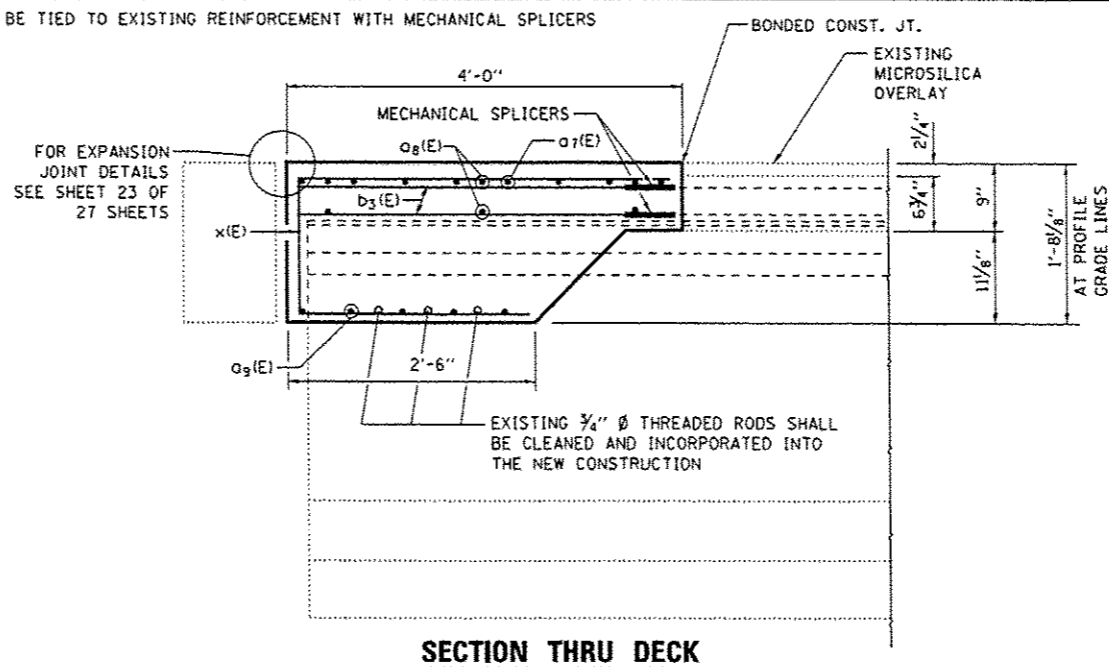
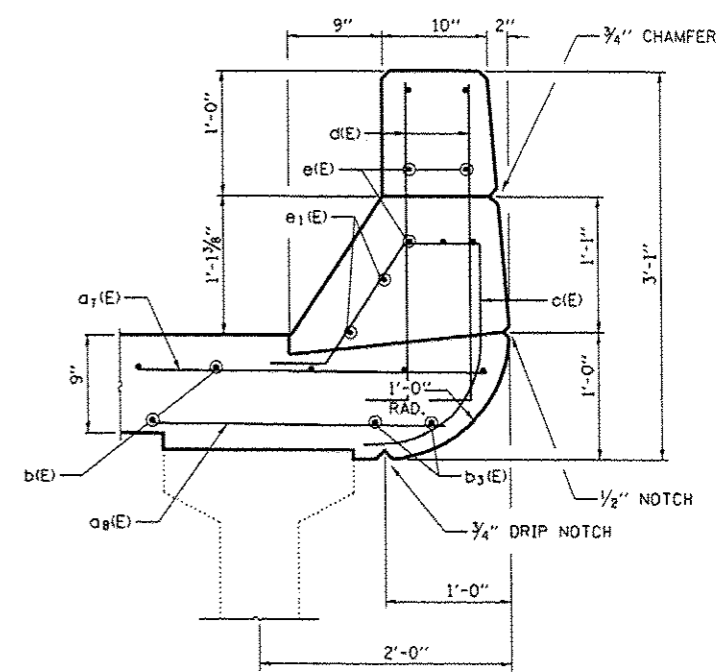


HALF PLAN

WEST END DECK FOR STAGE I SHOWN,
EAST END SIMILAR THRU 180 DEG. ROTATION ABOUT CENTERLINE OF STRUCTURE



SECTION THRU DECK



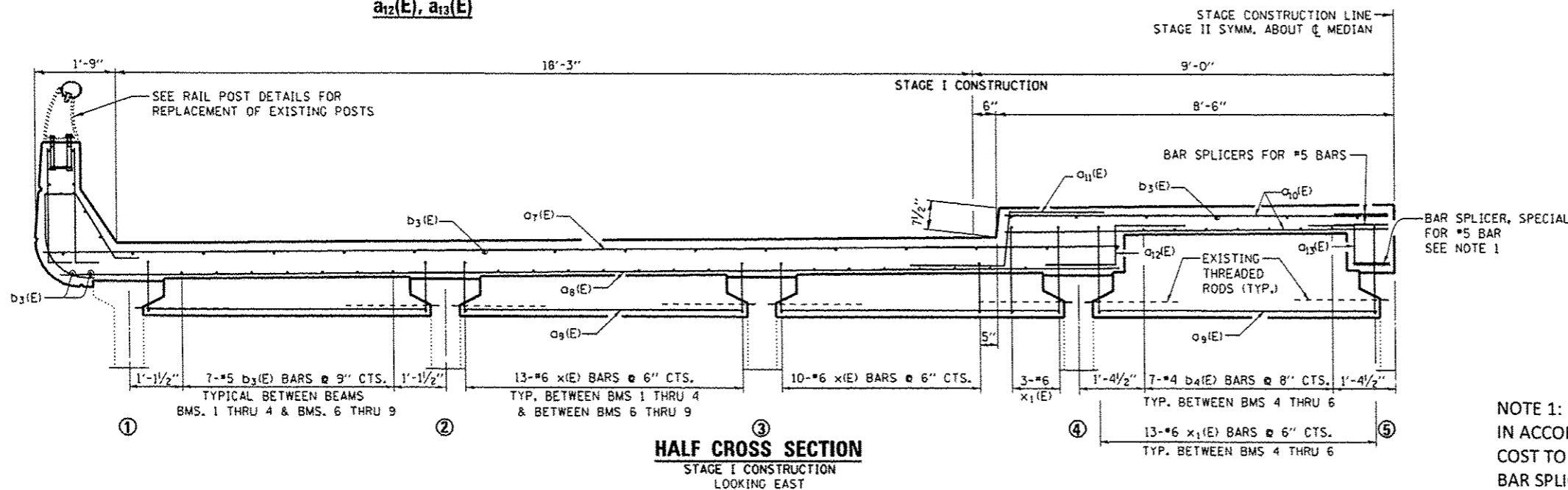
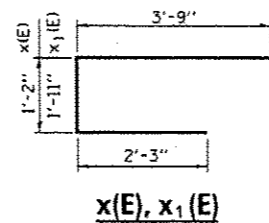
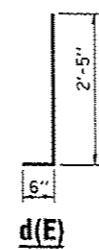
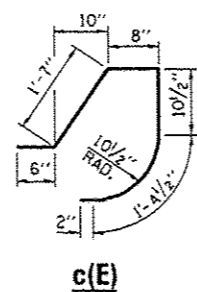
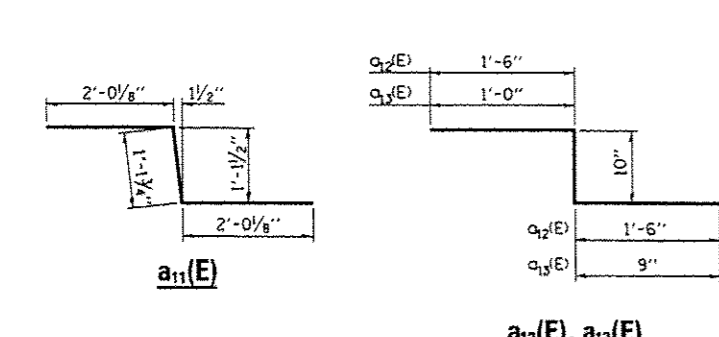
SECTION THRU PARAPET

**BILL OF MATERIAL
AT WEST ABUTMENT SUPERSTRUCTURE**

BAR NO.	SIZE	LENGTH	SHAPE
a7(E)	#7	22'-11"	
a8(E)	#6	22'-11"	
a9(E)	#6	6'-0"	
a10(E)	#5	8'-3"	
a11(E)	#6	5'-7"	
a12(E)	#5	3'-10"	
a13(E)	#6	2'-7"	
b3(E)	#5	3'-4"	
b4(E)	#4	3'-4"	
c(E)	#4	5'-0"	
d(E)	#5	2'-11"	
e(E)	#5	3'-9"	
e1(E)	#5	1'-9"	
x(E)	#6	7'-2"	
x1(E)	#6	7'-11"	
CONCRETE REMOVAL			CU YD 12.4
CONCRETE SUPERSTRUCTURE			CU YD 12.8
REINFORCEMENT BARS, EPOXY COATED			POUNDS 3760

BARS INDICATED THUS 1 X 2-#5 ETC. INDICATES 1 LINE OF BARS WITH 2 LENGTHS PER LINE.

NOTE 1:
IN ACCORDANCE WITH ART. 508 OF THE STANDARD SPECS.
COST TO BE PAID AT THE CONTRACT UNIT PRICE EACH FOR
BAR SPLICER, SPECIAL.



**HALF CROSS SECTION
STAGE I CONSTRUCTION
LOOKING EAST**

FILE NAME =	USER NAME = woodshankr1	DESIGNED - RON WOODSHANK	REVISED - 6/21/2014
0:\pwork\p\midst\woodshankr1\201308312\366074-shr-detals.dgn	366074-shr-detals.dgn	DRAWN - RON WOODSHANK	REVISED -
PLOT SCALE = 1/8" = 1'-0"		CHECKED - YOGESH PATEL	REVISED -
PLOT DATE = 6/25/2014		DATE - 2/10/2014	REVISED -

STATE OF ILLINOIS
DEPARTMENT OF TRANSPORTATION

**SUPERSTRUCTURE RECONSTRUCTION
FOR STRUCTURE NO. 027-0010**

SCALE: SHEET NO. 6 OF 13 SHEETS STA. TO STA.

F.A.P. RTE. 697	SECTION (27-1HB-2)IR	COUNTY FORD	TOTAL SHEETS 27	SHEET NO. 20
				CONTRACT NO. 66074
ILLINOIS FED. AID PROJECT				