

STANDARD BAR SPLICER ASSEMBLY

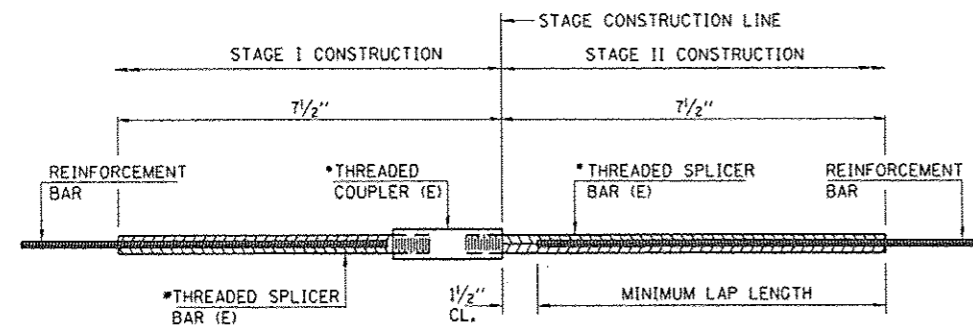
MINIMUM LAP LENGTHS						
BAR SIZE TO BE SPLICED	TABLE 1	TABLE 2	TABLE 3	TABLE 4	TABLE 5	TABLE 6
3, 4	1'-5"	1'-11"	2'-1"	2'-4"	2'-7"	2'-11"
5	1'-9"	2'-5"	2'-7"	2'-11"	3'-3"	3'-8"
6	2'-1"	2'-11"	3'-1"	3'-6"	3'-10"	4'-5"
7	2'-9"	3'-10"	4'-2"	4'-8"	5'-2"	5'-10"
8	3'-8"	5'-1"	5'-5"	6'-2"	6'-9"	7'-8"
9	4'-7"	6'-5"	6'-10"	7'-9"	8'-7"	9'-8"

- TABLE 1: BLACK BAR, 0.8 CLASS C
- TABLE 2: BLACK BAR, TOP BAR LAP, 0.8 CLASS C
- TABLE 3: EPOXY BAR, 0.8 CLASS C
- TABLE 4: EPOXY BAR, TOP BAR LAP, 0.8 CLASS C
- TABLE 5: EPOXY BAR, CLASS C
- TABLE 6: EPOXY BAR, TOP BAR TOP, CLASS C

THREADED SPLICER BAR LENGTH = MIN. LAP LENGTH + 1/2" + THREAD LENGTH

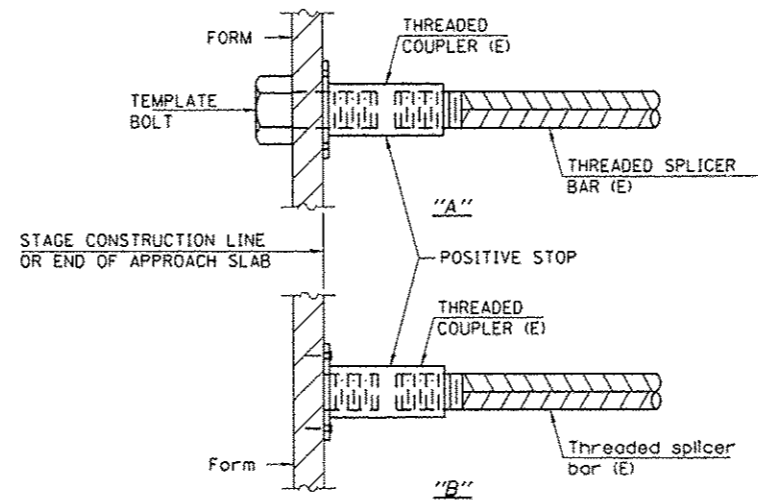
- EPOXY NOT REQUIRED ON BAR SPLICER ASSEMBLY COMPONENTS USED IN CONJUNCTION WITH BLACK BARS.

LOCATION	BAR SIZE	NO. ASSEMBLIES REQUIRED	TABLE FOR MINIMUM LAP LENGTH
WEST END, TOP AND BOTTOM OF MEDIAN AT STAGE CONST. LINE	#5	8	3
EAST END, TOP AND BOTTOM OF MEDIAN AT STAGE CONST. LINE	#5	8	3
TOTAL		16	



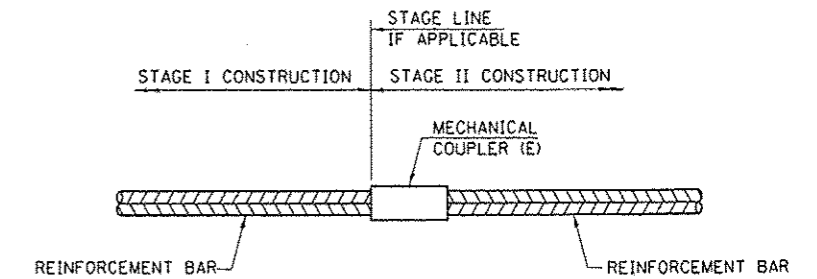
BAR SPLICER, SPECIAL ASSEMBLY FOR #5 BAR AT CENTERLINE OF MEDIAN FOR STAGE CONSTRUCTION

LOCATION	BAR SIZE	NO. ASSEMBLIES REQUIRED
WEST END, BOTTOM OF MEDIAN CAP OVER BEAM AT STAGE CONST. LINE	#5	4
EAST END, BOTTOM OF MEDIAN CAP OVER BEAM AT STAGE CONST. LINE	#5	4
TOTAL		8



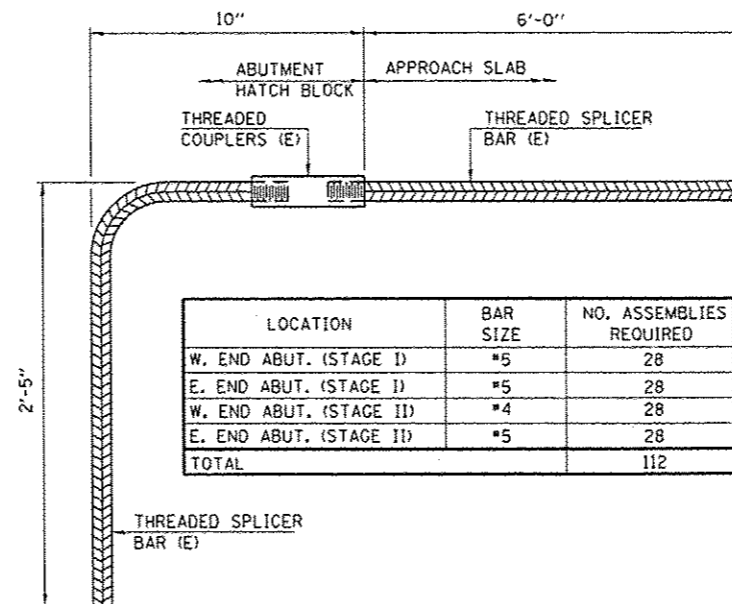
INSTALLATION AND SETTING METHODS

- "A": SET BAR SPLICER ASSEMBLY BY MEANS OF A TEMPLATE BOLT.
- "B": SET BAR SPLICER ASSEMBLY BY NAILING TO WOOD FORMS OR CEMENTING TO STEEL FORMS.
- (E) : INDICATES EPOXY COATING.



STANDARD MECHANICAL SPLICER

LOCATION	BAR SIZE	NO. ASSEMBLIES REQUIRED
W. END DECK (STAGE I)	#5	37
W. END MEDIAN (STAGE I)	#5	6
W. END MEDIAN (STAGE I)	#4	7
W. END PARAPET (STAGE I)	#5	9
E. END DECK (STAGE I)	#5	37
E. END MEDIAN (STAGE I)	#5	6
E. END MEDIAN (STAGE I)	#4	7
E. END PARAPET (STAGE I)	#5	9
W. END DECK (STAGE II)	#5	37
W. END MEDIAN (STAGE II)	#5	6
W. END MEDIAN (STAGE II)	#4	7
W. END PARAPET (STAGE II)	#5	9
E. END DECK (STAGE II)	#5	37
E. END MEDIAN (STAGE II)	#5	6
E. END MEDIAN (STAGE II)	#4	7
E. END PARAPET (STAGE II)	#5	9
TOTAL		236



LOCATION	BAR SIZE	NO. ASSEMBLIES REQUIRED
W. END ABUT. (STAGE I)	#5	28
E. END ABUT. (STAGE I)	#5	28
W. END ABUT. (STAGE II)	#4	28
E. END ABUT. (STAGE II)	#5	28
TOTAL		112

BAR SPLICER ASSEMBLY FOR #5 BAR ON STUB ABUTMENTS

NOTES

SPLICER BARS SHALL BE DEFORMED WITH THREADED ENDS AND HAVE A MINIMUM 60 KSI YIELD STRENGTH.
 ALL REINFORCEMENT SHALL BE LAPPED AND TIED TO THE SPLICER BARS.
 BAR SPLICER ASSEMBLIES SHALL BE EPOXY COATED ACCORDING TO THE REQUIREMENTS FOR REINFORCEMENT BARS. SEE SECTION 508 OF THE STANDARD SPECIFICATIONS.
 SEE APPROVED LIST OF BAR SPLICER ASSEMBLIES AND MECHANICAL SPLICERS FOR ALTERNATIVES.

BSD-1 1-27-12