

F.A.P. RTE.	SECTION	COUNTY	TOTAL SHEETS	SHEET NO.
840	D3 CRACK SEALING 2015-2	IROQUOIS	5	1
ILLINOIS			CONTRACT NO. 66E03	

INDEX OF SHEETS

1. COVER SHEET
2. GENERAL NOTES
3. SUMMARY OF QUANTITIES
4. TYPICAL SECTIONS
5. DETAILS

HIGHWAY STANDARDS

- | | |
|-----------|--|
| 000001-06 | STANDARD SYMBOLS, ABBREVIATIONS AND PATTERNS |
| 001006 | DECIMAL OF AN INCH AND OF A FOOT |
| 701001-02 | OFF-ROAD OPERATIONS 2L, 2W, MORE THAN 15' (4.5 m) AWAY |
| 701006-05 | OFF-ROAD OPERATIONS 2L, 2W, 15' (4.5 m) TO 24" (600 mm) FROM PAVEMENT EDGE |
| 701301-04 | LANE CLOSURE, 2L, 2W, SHORT TIME OPERATIONS |
| 701306-03 | LANE CLOSURE, 2L, 2W, SLOW MOVING OPERATIONS DAY ONLY, FOR SPEEDS ≥ 45 MPH |
| 701311-03 | LANE CLOSURE, 2L, 2W, MOVING OPERATIONS - DAY ONLY |
| 701901-03 | TRAFFIC CONTROL DEVICES |

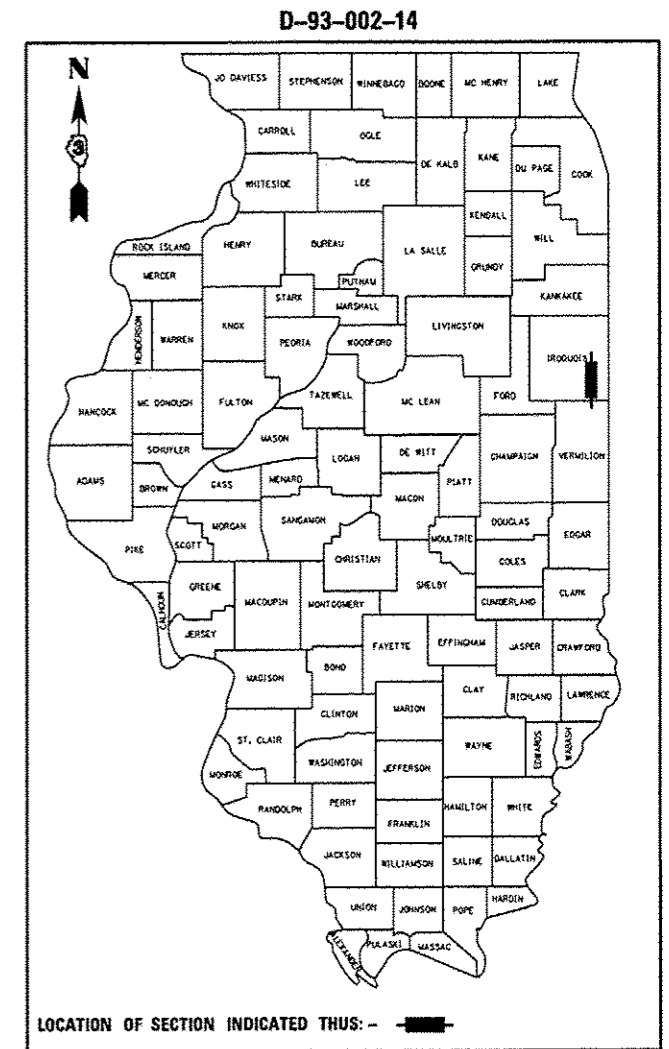
STATE OF ILLINOIS
DEPARTMENT OF TRANSPORTATION
DIVISION OF HIGHWAYS

PROPOSED
HIGHWAY PLANS

FAP 840 (IL 49)
SECTION D3 ROUTE AND SEAL 2015-2

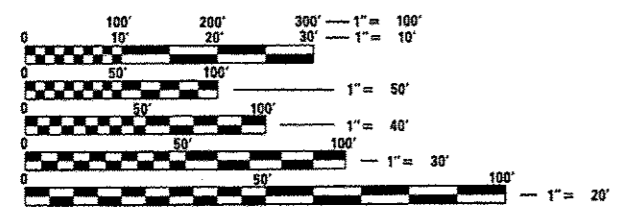
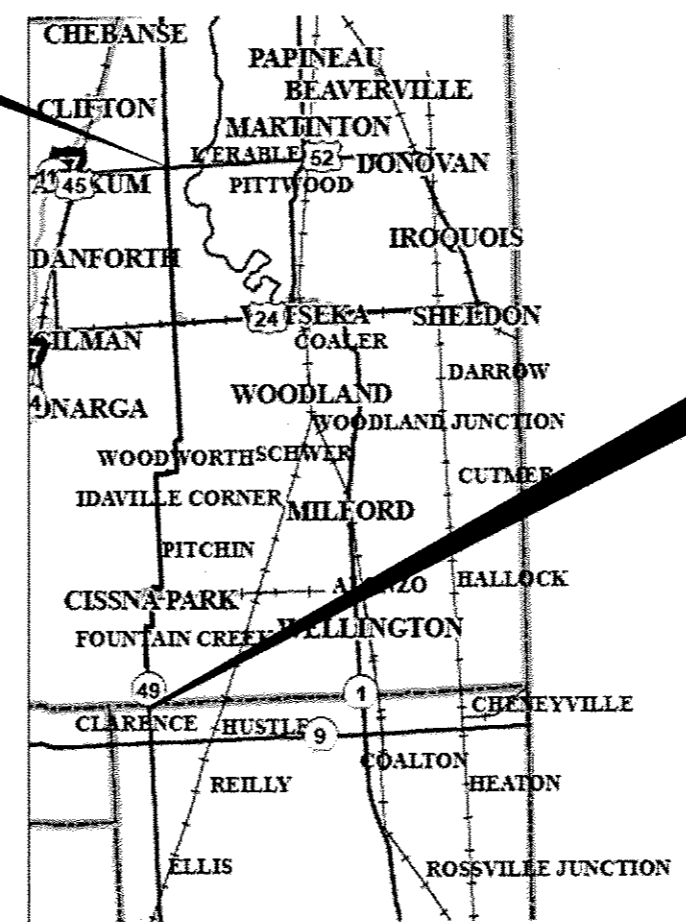
ROUTING AND SEALING PAVEMENT CRACKS
IROQUOIS COUNTY

C-93-134-14



BEGIN IMPROVEMENT - IL 49
 IL 49 & US 52 INTERSECTION
 L.M. 0.00

END IMPROVEMENT - IL 49
 IL 49 & VERMILLION COUNTY LINE INTERSECTION
 L.M. 29.00



FULL SIZE PLANS HAVE BEEN PREPARED USING STANDARD ENGINEERING SCALES. REDUCED SIZED PLANS WILL NOT CONFORM TO STANDARD SCALES. IN MAKING MEASUREMENTS ON REDUCED PLANS, THE ABOVE SCALES MAY BE USED.

J.U.L.I.E.
 JOINT UTILITY LOCATION INFORMATION FOR EXCAVATION
 1-800-892-0123
 OR 811

PROJECT ENGINEER: JOE KANNEL P.E.
UNIT CHIEF: RON WOODSHANK
TOWNSHIPS: VARIOUS
CONTRACT NO. 66E03

GROSS LENGTH IL 49=153120 FT.=29.0 MILE
 NET LENGTH IL 49=153120 FT.=29.0 MILE

FUNCTIONAL CLASSIFICATION
 RURAL - MINOR ARTERIAL
 FAP 840 (IL 49)
 ADT = 1750 (2012)
 P.V = 83.3 % M.U. = 11.5 % S.U. = 5.2 %

STATE OF ILLINOIS
 DEPARTMENT OF TRANSPORTATION
 DIVISION OF HIGHWAYS

SUBMITTED May 15 2014
Paul Coetz D.S.
 DEPUTY DIRECTOR OF HIGHWAYS, REGION ENGINEER

June 27 2014
John D. Baranzelli P.E.
 acting ENGINEER OF DESIGN AND ENVIRONMENT

June 27 2014
Omer Osman P.E.
 DIRECTOR OF HIGHWAYS, CHIEF ENGINEER

PRINTED BY THE AUTHORITY
OF THE STATE OF ILLINOIS