

F.A.P. RTE.	SECTION	COUNTY	TOTAL SHEETS	SHEET NO.
619	103RS-4	LASALLE	6	1
		ILLINOIS	CONTRACT NO. 66E07	

INDEX OF SHEETS

1. COVER SHEET
2. GENERAL NOTES
3. SUMMARY OF QUANTITIES
4. TYPICAL SECTIONS
5. SCHEDULES
6. DETAILS

STANDARDS

- 000001-06 STANDARD SYMBOLS, ABBREVIATIONS AND PATTERNS
- 001006 DECIMAL OF AN INCH AND OF A FOOT
- 701326-04 LANE CLOSURE, 2L2W, SLOW MOVING OPERATIONS DAY ONLY, FOR SPEEDS >45 MPH
- 701006-05 OFF-RD OPERATIONS, 2L2W, 15' TO 24" FROM PAVEMENT EDGE
- 701901-03 TRAFFIC CONTROL DEVICES
- 781001-03 TYPICAL APPLICATIONS RAISED REFLECTIVE PAVEMENT MARKERS

STATE OF ILLINOIS
DEPARTMENT OF TRANSPORTATION
DIVISION OF HIGHWAYS

PROPOSED
HIGHWAY PLANS

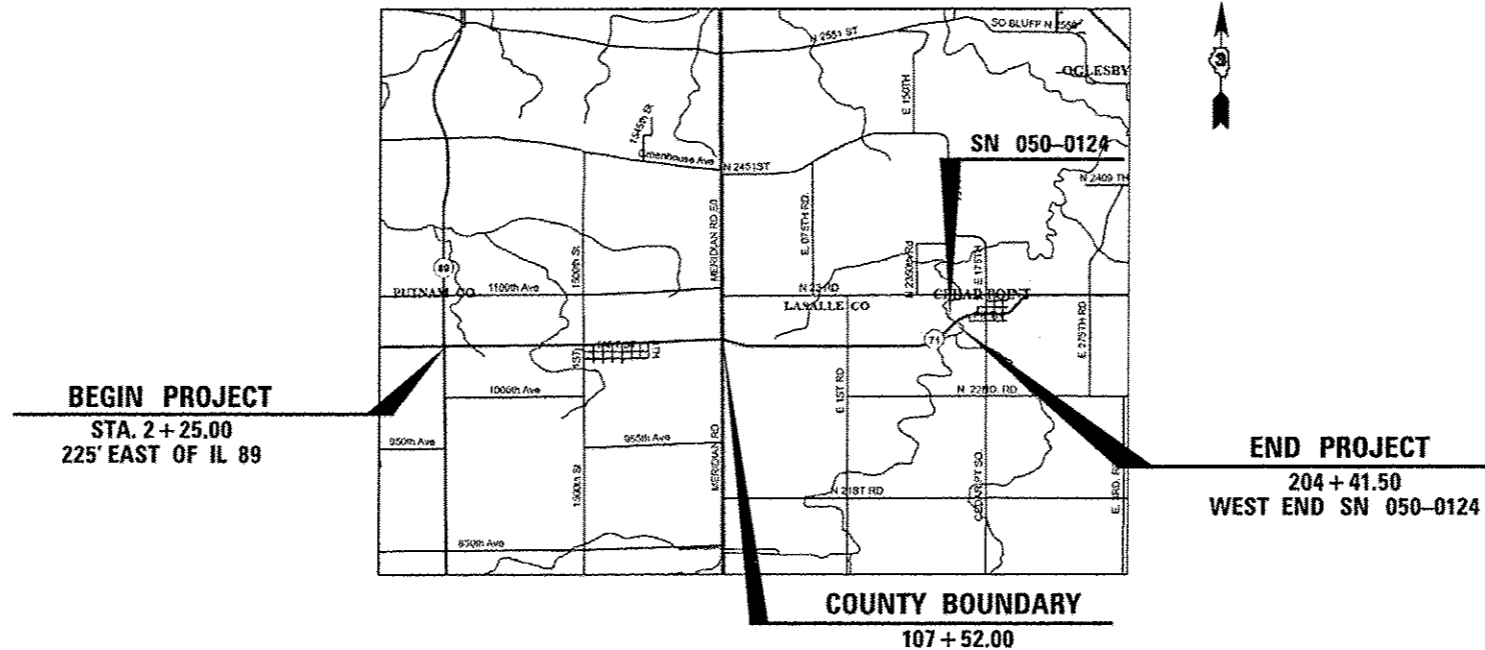
FAP 619 (IL 71)
SECTION 103RS-4

RESURFACING
LASALLE & PUTNAM COUNTIES

D-93-088-14



C-93-141-14

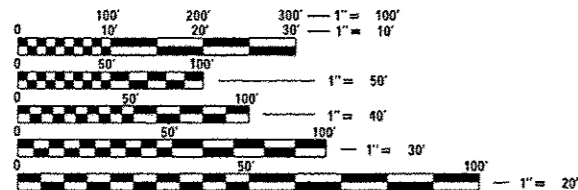


FUNCTIONAL CLASSIFICATION

RURAL ARTERIAL

2012 ADT = 2600

P.V. = 62.50% M.U. = 21.15% S.U. = 16.35%



FULL SIZE PLANS HAVE BEEN PREPARED USING STANDARD ENGINEERING SCALES. REDUCED SIZED PLANS WILL NOT CONFORM TO STANDARD SCALES. IN MAKING MEASUREMENTS ON REDUCED PLANS, THE ABOVE SCALES MAY BE USED.

J.U.L.I.E.
 JOINT UTILITY LOCATION INFORMATION FOR EXCAVATION
 1-800-892-0123
 OR 811

DISTRICT 3 NO. (815) 434-6131

PROJECT ENGINEER: JOE KANNEL, P.E.
 UNIT CHIEF: SCOTT A. FERGUSON

CONTRACT NO. 66E07

GROSS LENGTH = 20,216.5 FT. = 3.83 MILES
 NET LENGTH = 20,216.5 FT. = 3.83 MILES

STATE OF ILLINOIS
 DEPARTMENT OF TRANSPORTATION
 DIVISION OF HIGHWAYS

SUBMITTED *June 6 20 14*
Paul Coete, P.E.
 DEPUTY DIRECTOR OF HIGHWAYS, REGION ENGINEER

June 27 20 14
John D. Baranzelli, P.E.
 ENGINEER OF DESIGN AND ENVIRONMENT

June 27 20 14
Omer Osman, P.E.
 DIRECTOR OF HIGHWAYS, CHIEF ENGINEER

PRINTED BY THE AUTHORITY
OF THE STATE OF ILLINOIS