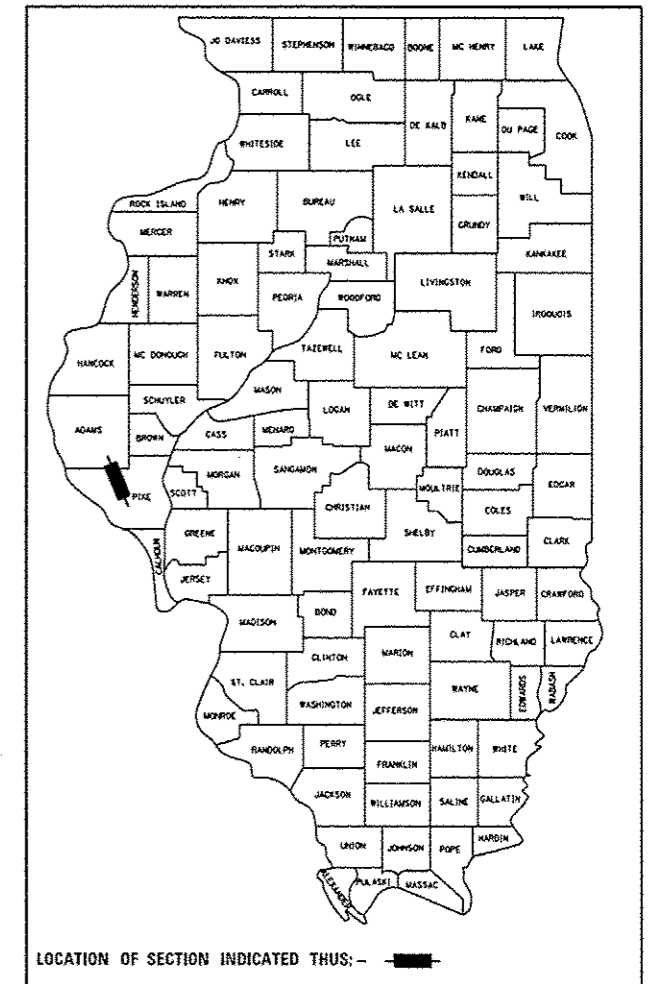


F.A.P. RTE.	SECTION	COUNTY	TOTAL SHEETS	SHEET NO.
566	(17) I	PIKE	12	1
		ILLINOIS	CONTRACT NO. 72G83	

D-96-054-14



F.A.P. 566 (IL 106)  
 ADT (2013) : 1600  
 HCV = 9.38% SU = 6.25% MU = 3.12%  
 SPEED LIMIT: 55 MPH (POSTED)

STATE OF ILLINOIS  
 DEPARTMENT OF TRANSPORTATION  
 DIVISION OF HIGHWAYS

SUBMITTED May 16 2014  
Page 2 of 14  
 DEPUTY DIRECTOR OF HIGHWAYS, REGION ENGINEER

June 27 2014  
John D. Baranzano PE  
 ENGINEER OF DESIGN AND ENVIRONMENT

June 27 2014  
Cher Osman PE  
 DIRECTOR OF HIGHWAYS, CHIEF ENGINEER

PRINTED BY THE AUTHORITY  
 OF THE STATE OF ILLINOIS

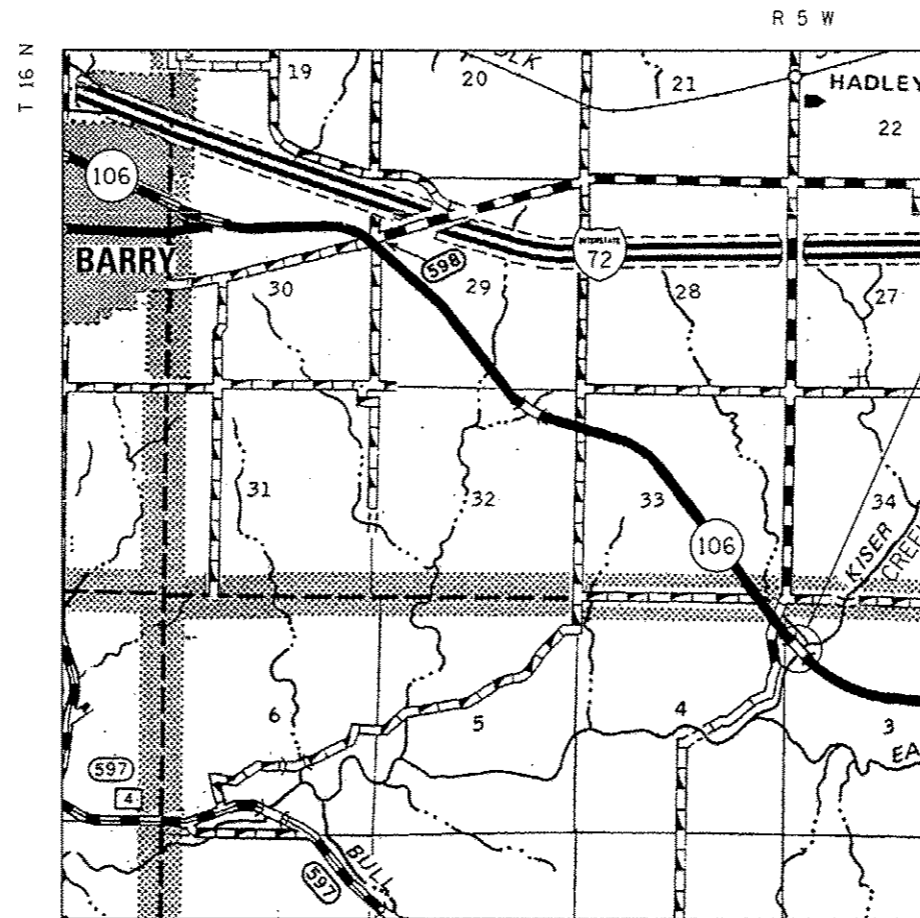
STATE OF ILLINOIS  
 DEPARTMENT OF TRANSPORTATION  
 DIVISION OF HIGHWAYS  
**PROPOSED  
 SPRING ROAD REPAIR**

FAP ROUTE 566 (IL 106)  
 SECTION (17) I

BRIDGE DECK PATCHING  
 PIKE COUNTY

C-96-054-14

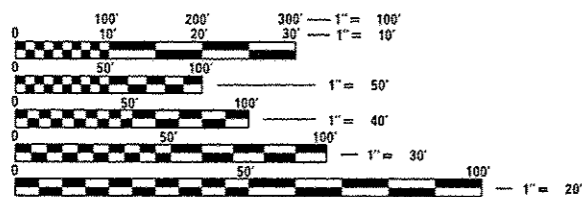
FOR INDEX OF SHEETS, SEE SHEET NO. 2



PROJECT LOCATION:  
 SN 075-0159  
 STA. 573+71.00  
 BRIDGE OVER KISER CREEK

LOCATION MAP

NET LENGTH = 198.50 FT = 0.038 MILE



FULL SIZE PLANS HAVE BEEN PREPARED USING STANDARD ENGINEERING SCALES. REDUCED SIZED PLANS WILL NOT CONFORM TO STANDARD SCALES. IN MAKING MEASUREMENTS ON REDUCED PLANS, THE ABOVE SCALES MAY BE USED.

J.U.L.I.E.  
 JOINT UTILITY LOCATION INFORMATION FOR EXCAVATION  
 1-800-892-0123  
 OR 811

BRIDGE MAINTENANCE ENGINEER (ACTING): BRANDON DUDLEY (217) 785-9290  
 BRIDGE INSPECTION ENGINEER: DAVE COPENBARGER (217) 785-5306

CONTRACT NO. 72G83