

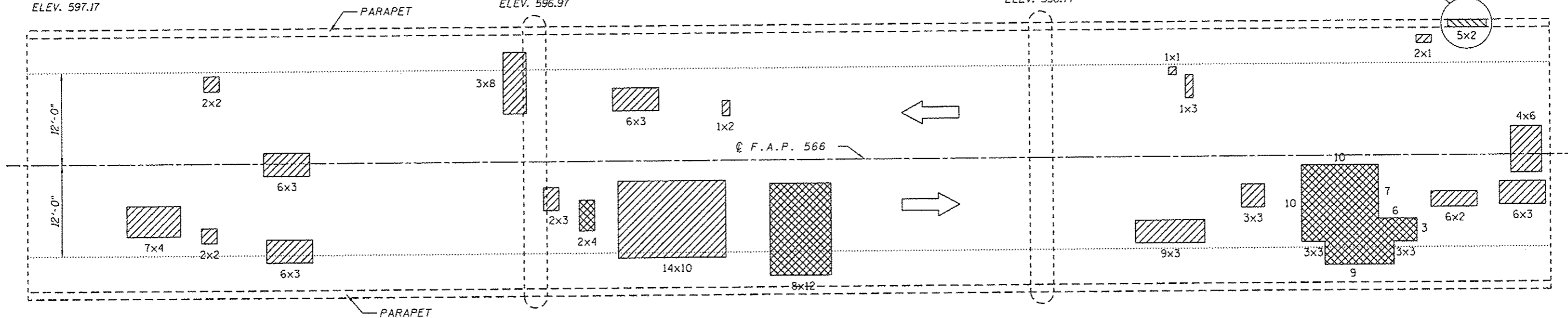
ADJ 9: 10M

BK. S. ABUT.
STA. 572+71.75
ELEV. 597.17

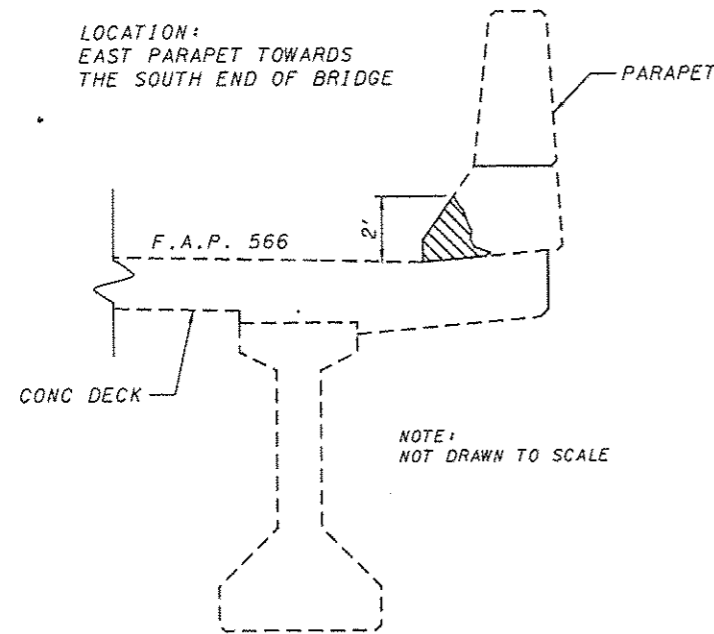
PIER #1
STA. 573+38.00
ELEV. 596.97

PIER #2
STA. 574+04.00
ELEV. 596.77

SEE DETAIL A
BK. N. ABUT.
STA. 574+70.25
ELEV. 596.57



LOCATION:
EAST PARAPET TOWARDS
THE SOUTH END OF BRIDGE



DETAIL A

BILL OF MATERIAL		
TYPE	UNIT	QUANTITY
DECK SLAB REPAIR (PARTIAL)	SQ. YD.	40
DECK SLAB REPAIR (FULL DEPTH, TY II)	SQ. YD.	28
STRUCTURAL REPAIR OF CONCRETE (DEPTH ≤5)	SQ. FT.	10

LEGEND

- PARTIAL DEPTH PATCHING AREA
- FULL DEPTH PATCHING AREA
- STRUCTURAL REPAIR OF CONCRETE

PATCHING SURVEY: 10-18-2012

GENERAL NOTES:

THE PATCH SIZES AND LOCATIONS SHOWN ON THE PLAN SHEETS ARE ESTIMATED. THE FINAL PATCH LOCATIONS SHALL BE DETERMINED BY THE ENGINEER IN THE FIELD.

FULL DEPTH PATCHES REMAINING OPEN OVERNIGHT SHALL BE COVERED WITH STEEL PLATES. THE COST OF FURNISHING, SETTING, AND REMOVING STEEL PLATES SHALL BE INCLUDED IN THE BID PRICE FOR 'DECK SLAB REPAIR (FULL DEPTH, TY II).'

FILE NAME =	USER NAME = dudleygm	DESIGNED - DMS	REVISED -	STATE OF ILLINOIS DEPARTMENT OF TRANSPORTATION	SN 075-0159 PATCHING & REPAIR PLAN	F.A.P. RTE.	SECTION	COUNTY	TOTAL SHEETS	SHEET NO.	
D:\OPERATIONS\Bridges\plns_CAD\72683 - S	0750159 Patching 2014\72683.dgn	DRAWN - DMS	REVISED -			566	(17) I	PIKE	12	12	
Default	PLOT SCALE = 48.0000' / 1" =	CHECKED -	REVISED -			CONTRACT NO. 72683					
	PLOT DATE = May-16-2014 10:15:38AM	DATE -	REVISED -			ILLINOIS FED. AID PROJECT					