

F.A.P. RTE.	SECTION	COUNTY	TOTAL SHEETS	SHEET NO.
666	*	SANGAMON	19	1
		ILLINOIS	CONTRACT NO. 72H08	

• (110X) I-2, (SP-Z) I-1

INDEX OF SHEETS

- 1 COVER SHEET
- 2 GENERAL NOTES
- 3,4 SUMMARY OF QUANTITIES
- 5 SCHEDULE OF QUANTITIES
- 6-13 TYPICAL CROSS SECTIONS
- 14-17 PLAN LAYOUTS
- 18,19 DETAIL SHEETS

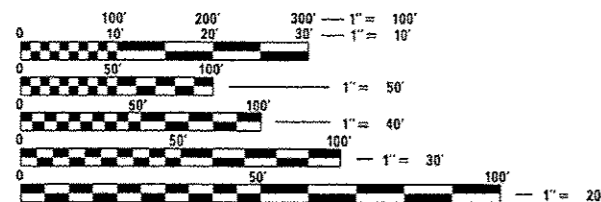
HIGHWAY STANDARDS

001001-02	701602-07
001006	701701-09
442201-03	701901-03
701601-09	886001-01

WHEREVER IN THESE PLANS SECTION D6 SPRING RD REPAIR 2014-6 IS MENTIONED, IT SHALL MEAN SECTION (110X)I-2, (SP-Z) I-1

ROADWAY FUNCTIONAL CLASS
OTHER PRINCIPAL ARTERIAL

AVERAGE DAILY TRAFFIC
SEE SHEET 5



FULL SIZE PLANS HAVE BEEN PREPARED USING STANDARD ENGINEERING SCALES. REDUCED SIZED PLANS WILL NOT CONFORM TO STANDARD SCALES. IN MAKING MEASUREMENTS ON REDUCED PLANS, THE ABOVE SCALES MAY BE USED.

J.U.L.I.E.
JOINT UTILITY LOCATION INFORMATION FOR EXCAVATION
1-800-892-0123
OR 811

PROJECT ENGINEER: VINCE MADONIA - (217)785-9046
TEAM MANAGER: TIM SLAGLE - (217)785-5538

CONTRACT NO. 72H08

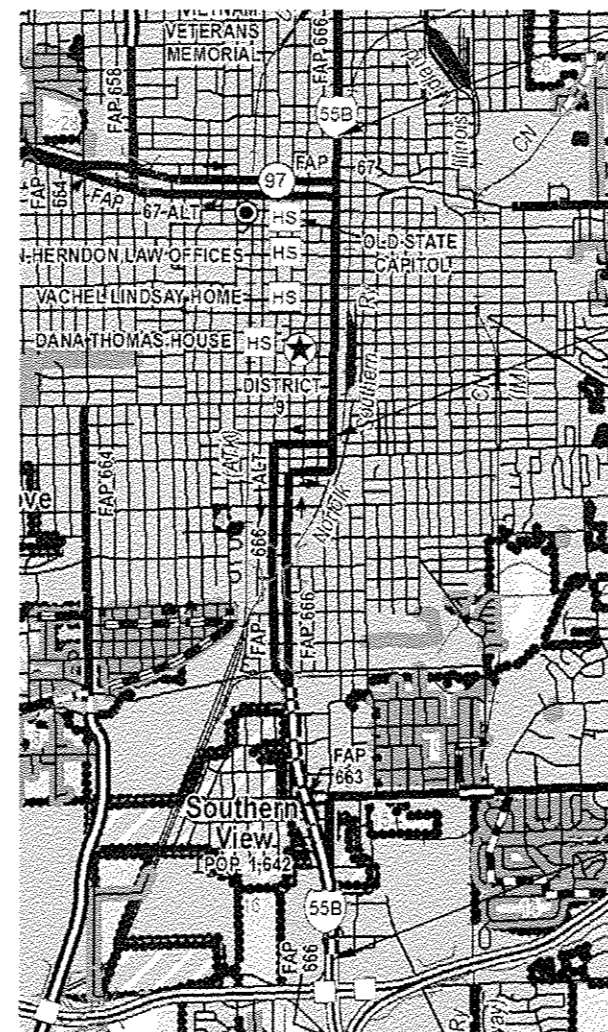
STATE OF ILLINOIS DEPARTMENT OF TRANSPORTATION DIVISION OF HIGHWAYS

PROPOSED HIGHWAY PLANS

FAP ROUTE 666 (BUS. LOOP 55 (5TH, 6TH & 9TH STREETS))
SECTION (110X) I-2, (SP-Z) I-1

MAINLINE PAVEMENT PATCHING SANGAMON COUNTY

C-96-079-14



PROJECT SECTION BEGINS, ENDS
(9TH STREET, JUST SOUTH
OF CARPENTER STREET)

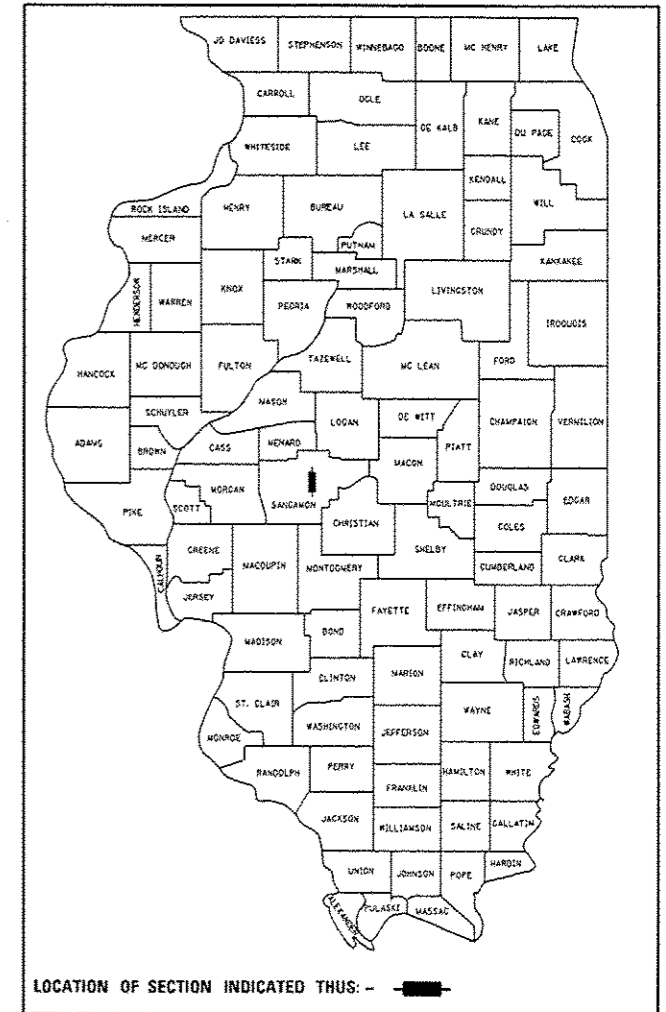
PROJECT SECTION ENDS
(5TH & 6TH STREETS)

PROJECT SECTION BEGINNING
(5TH & 6TH STREETS)

LOCATION MAP

NET LENGTH = 23,126.40 FEET = 4.38 MILES

D-96-079-14



STATE OF ILLINOIS
DEPARTMENT OF TRANSPORTATION
DIVISION OF HIGHWAYS

SUBMITTED MAY 22 2014
Roger J. Driskell
DEPUTY DIRECTOR OF HIGHWAYS, REGION ENGINEER

June 27 2014
John D. Baranzelli, PE
ENGINEER OF DESIGN AND ENVIRONMENT

June 27 2014
Omer Osman, PE
DIRECTOR OF HIGHWAYS, CHIEF ENGINEER

PRINTED BY THE AUTHORITY
OF THE STATE OF ILLINOIS

△ REVISED 7-21-14