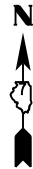
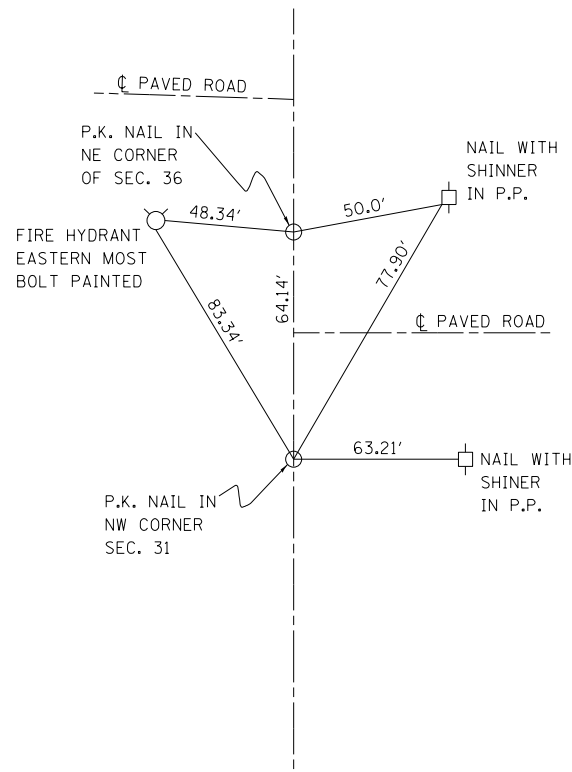


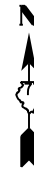
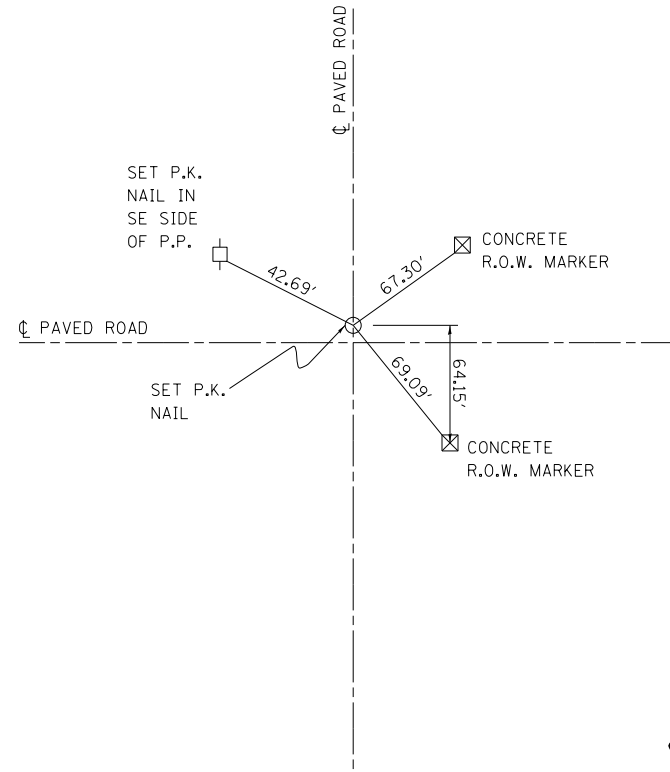
26

T9N R3E
± STA 870+02.5
± STA 870+87



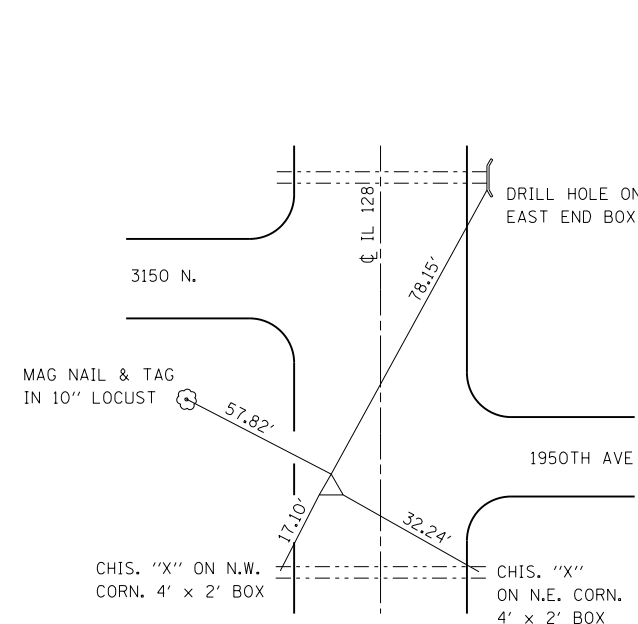
27

E 1/4 CORNER SEC. 36
± STA 896+84



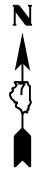
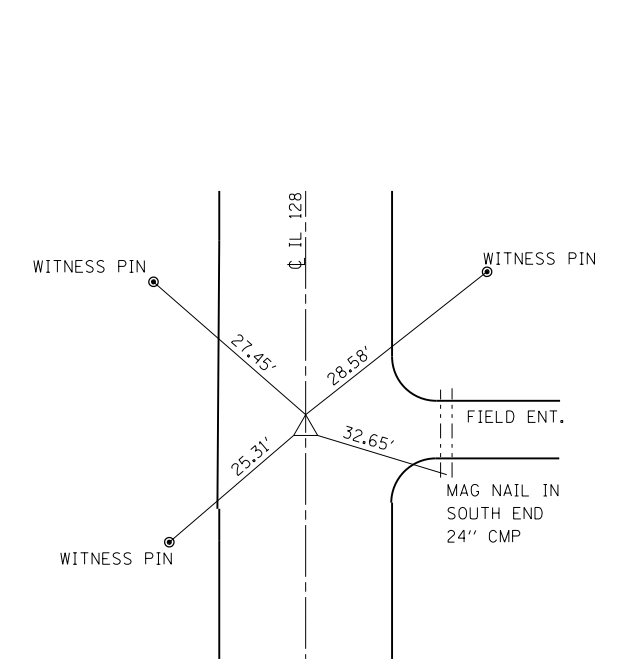
28

WEST QUARTER CORNER SEC. 30 T9N R4E
5/8" IRON PIN WITH ALUMINUM CAP (SET)
± STA 844+52



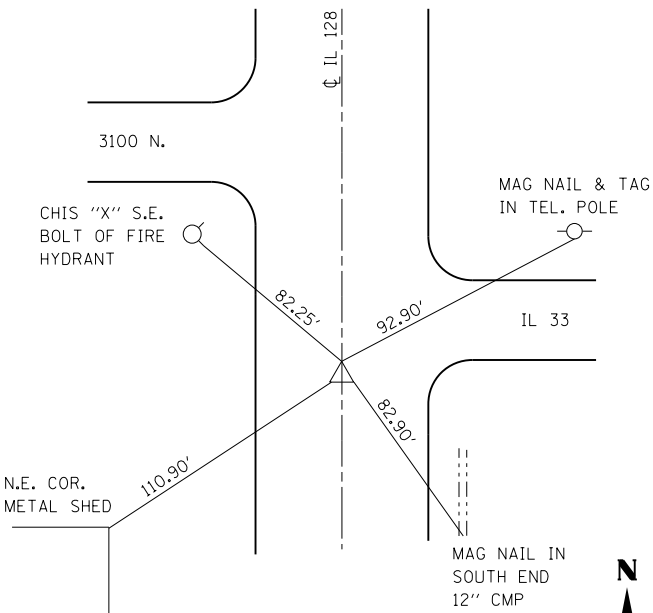
29

NORTHWEST CORNER SEC. 30 T9N R4E
P.K. NAIL & TAG (SET)
± STA 818+12



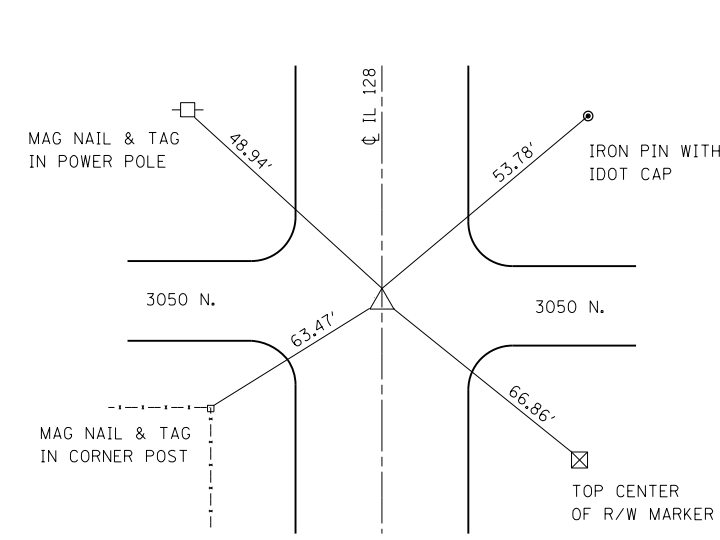
30

SOUTHWEST CORNER SEC. 30 T9N R4E
5/8" IRON PIN (SET)
± STA 870+86.9



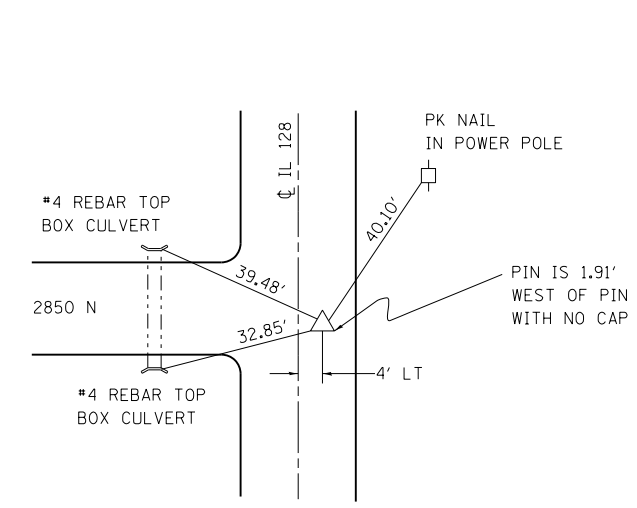
31

WEST QUARTER CORNER SEC. 31 T9N R4E
5/8" IRON PIN WITH IDOT CAP (FOUND)
± STA 896+89



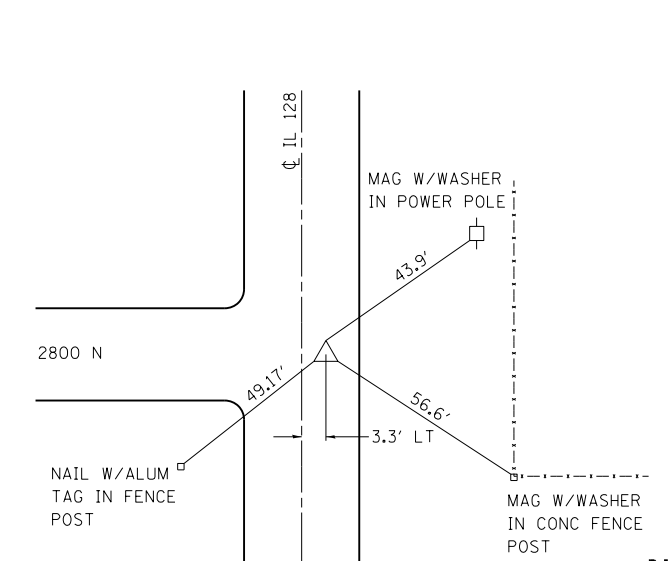
32

EAST QUARTER CORNER SEC. 12 T8N R3E
EXISTING 5/8" IRON PIN WITH IDOT CAP
± STA 999+72



33

SOUTHEAST CORNER SEC. 12 T8N R3E
5/8" IRON PIN WITH IDOT CAP (SET)
± STA 1026+08



FILE NAME =	USER NAME = steffemk	DESIGNED -	REVISED -
ci:\pw\work\p\d0121426\074052-sh-t-ties.dgn		DRAWN -	REVISED -
PLOT SCALE = 100.0000' / in.		CHECKED -	REVISED -
PLOT DATE = 6/6/2014		DATE -	REVISED -

STATE OF ILLINOIS
DEPARTMENT OF TRANSPORTATION

SURVEY TIES

SCALE: N/A SHEET NO. 5 OF 8 SHEETS STA. TO STA.

F.A.S. RTE.	SECTION	COUNTY	TOTAL SHEETS	SHEET NO.
2801	102RS-3.103RS-2.102N	Effingham, Fayette	84	20
CONTRACT NO. 74052			ILLINOIS FED. AID PROJECT	