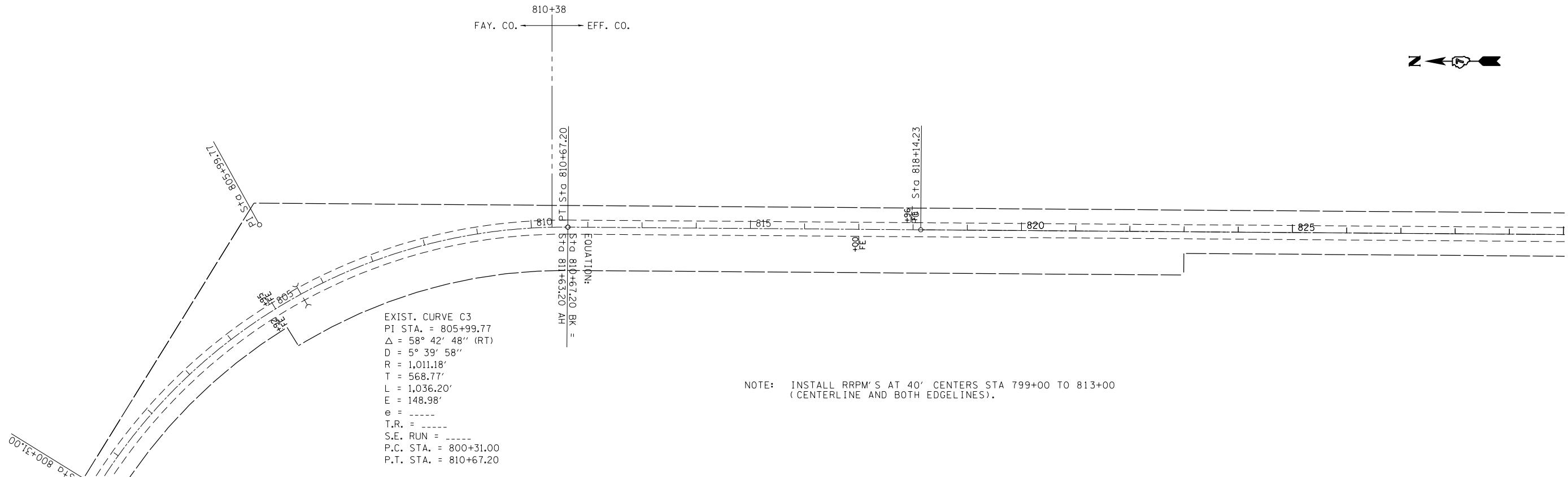
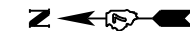


HOT-MIX ASPHALT SHOULDERS, 6 INCH	
RT STA 799+31 TO 812+63	412 SQ YD



FILE NAME =	USER NAME = steffenmk	DESIGNED -	REVISED -
ci:\pw\work\p\idot\steffenmk\d0121426\074052-shr-plan.dgn		DRAWN -	REVISED -
	PLOT SCALE = 200.0000' / in.	CHECKED -	REVISED -
	PLOT DATE = 6/6/2014	DATE -	REVISED -

**STATE OF ILLINOIS
DEPARTMENT OF TRANSPORTATION**

RESURFACING PLAN SHEET

SCALE: 100 SHEET NO. 2 OF 12 SHEETS STA. 880+00 TO STA. 940+00

F.A.S. RTE.	SECTION	COUNTY	TOTAL SHEETS	SHEET NO.
2801	102RS-3.103RS-2.102N	•	84	25
• Effingham, Fayette			CONTRACT NO. 74052	
ILLINOIS FED. AID PROJECT				