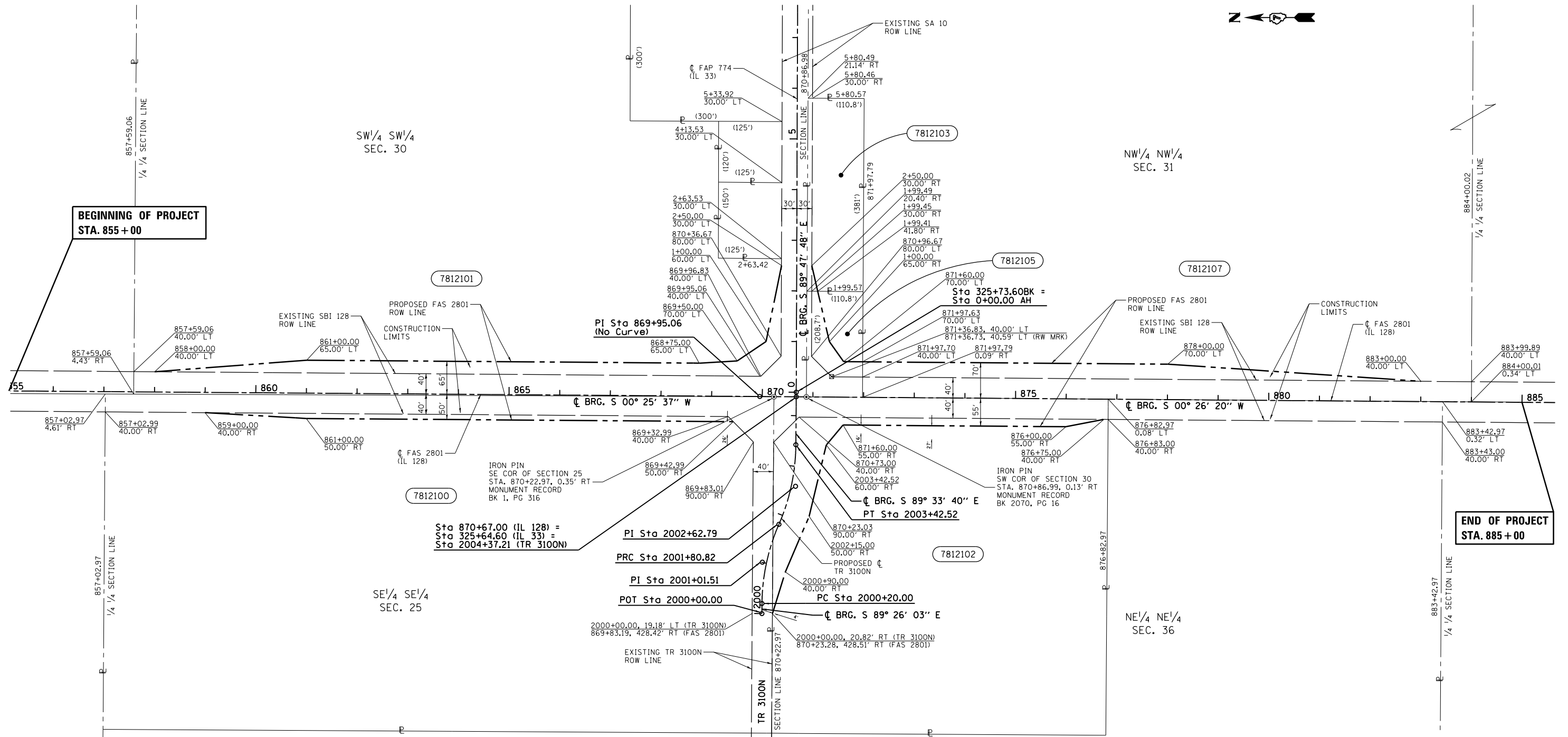


T.9N.-R.3&4E., 3rd P.M., LOUDON & LIBERTY TWP.



NOTE:
 BEARINGS ARE REFERENCED TO THE ILLINOIS STATE PLANE COORDINATE SYSTEM EAST ZONE DATUM OF 1983
 TEMPORARY EASEMENTS REQUIRED TO IMPROVE DRAINAGE AND AS A WORK AREA.

○ - IRON PIN
 ⊙ - MAG NAIL
 ⊠ - ROW MARKER
 (R) RECORDED DISTANCE
 ■ TEMPORARY EASEMENT

PARCEL	OWNER	AREA TAKEN		EASEMENT	AREA REM	INST	RECORDED				EXCESS		
		ADD	EXIST				MICRO FILM NO	DATE	BOOK	PAGE	AREA	SOLD	
7812100	DALE B. OR OAKA L. WADE, TRUSTEES	0.216 AC.	1.522 AC.		18.354 AC.								
7812101	MARY G. HOGGE, TRUSTEE	0.724 AC.	2.796 AC.		33.325 AC.								
7812102	HENRY F. BENNETT	0.721 AC.	0.634 AC.		8.702 AC.								
7812103	JOHN A. AND SHELLE D. SLOAN	0.007 AC.	0.081 AC.		0.882 AC.								
7812105	PETER AND KATHARINA GRUJANAC	0.149 AC.	0.158 AC.		0.224 AC.								
7812107	GRUJANAC FAMILY LIMITED PARTNERSHIP	0.587 AC.	2.288 AC.		73.626 AC.								

PROP. CURVE C1
 PI STA. = 2001+01.51
 Δ = 23° 02' 09" (RT)
 D = 14° 19' 26"
 R = 400.00'
 T = 81.51'
 L = 160.82'
 E = 8.22'
 e = -----
 T.R. = -----
 S.E. RUN = -----
 P.C. STA = 2000+20.00
 P.T. STA = 2001+80.82

PROP. CURVE C2
 PI STA. = 2002+62.79
 Δ = 23° 09' 45" (LT)
 D = 14° 19' 26"
 R = 400.00'
 T = 81.97'
 L = 161.71'
 E = 8.31'
 e = -----
 T.R. = -----
 S.E. RUN = -----
 P.C. STA = 2001+80.82
 P.T. STA = 2003+42.52