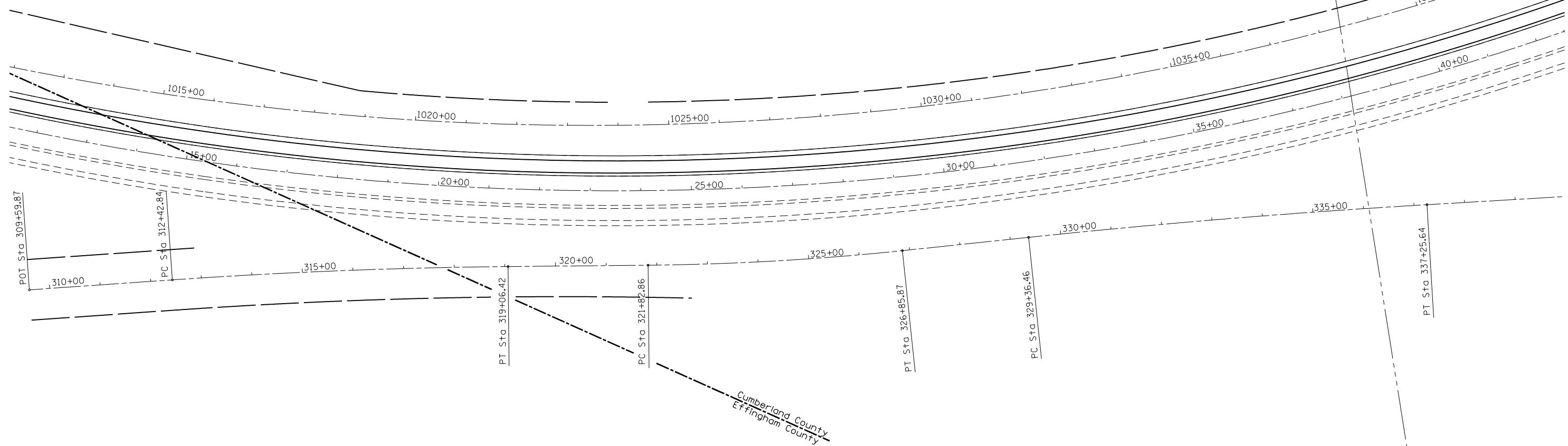




EXIST. CURVE 01 C 70 P.I. STA. = 27+00.00 Δ = 32°03'12" D = 1°00'00" R = 5729.58 T = 1645.82 L = 3205.33 E = 231.70 e = 0.028 T.R. = S.E. RUN = P.C. = STA. 10+45.18 P.T. = STA. 42+56.51	EXIST. CURVE 01 A WB P.I. STA. = 47' LT FWD TAN 0+07.85 Δ = 32°03'12" D = 1°00'00" R = 5729.58 T = 1645.82 L = 3205.33 E = 231.70 e = 0.028 T.R. = S.E. RUN = P.C. = STA. 10+35.89 44' LT P.T. = STA. 42+67.36 47' LT	EXIST. CURVE 01 B EB P.I. STA. = 44' RT BK TAN 27+18+20 Δ = 32°03'12" D = 1°00'00" R = 5729.58 T = 1645.82 L = 3205.33 E = 231.70 e = 0.028 T.R. = S.E. RUN = P.C. = STA. 10+72.47 44' RT TAN P.T. = STA. 16+37.97 47' RT FWD TAN
--	---	---



**STATE OF ILLINOIS  
DEPARTMENT OF TRANSPORTATION**

**PLAN SHEET**

FILE NAME =	USER NAME = steffenmk	DESIGNED -	REVISED -
ei:\pwwork\pwwork\steffenmk\d0393168\074386-sh1-plan.dgn		DRAWN -	REVISED -
	PLOT SCALE = 200.0000' / in.	CHECKED -	REVISED -
	PLOT DATE = 5/9/2014	DATE -	REVISED -

SCALE: 100      SHEET NO. 2 OF 5 SHEETS      STA. 12+00 TO STA. 42+00

F.A.I. RTE.	SECTION	COUNTY	TOTAL SHEETS	SHEET NO.
70	(18-4)RS-4	CUMBERLAND	17	12
ILLINOIS FED. AID PROJECT			CONTRACT NO. 74386	