

STATE OF ILLINOIS  
DEPARTMENT OF TRANSPORTATION  
DIVISION OF HIGHWAYS

**PROPOSED  
HIGHWAY PLANS**

F.A.I. ROUTE 70 (I-70)  
SECTION (18-45)RS-4  
PROJECT: ACNHPP-0070(402)  
RESURFACING  
CUMBERLAND COUNTY

C-97-078-09

FOR INDEX OF SHEETS, SEE SHEET NO. 2

STATION EQUATION:  
STA. 2772+59.71 (BK) = 9+02.89 (AH)

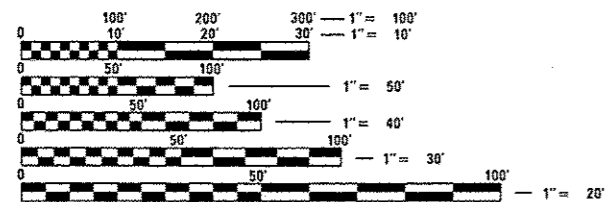
ADT=19,000 (2012)

F.A.I. RTE.	SECTION	COUNTY	TOTAL SHEETS	SHEET NO.
70	(18-45)RS-4	CUMBERLAND	17	1
		ILLINOIS	CONTRACT NO. 74386	



F.A.I. ROUTE 70 (I-70)  
SECTION (18-45)RS-4  
ENDS STATION 108+45.00  
CUMBERLAND COUNTY

F.A.I. ROUTE 70 (I-70)  
SECTION (18-45)RS-4  
BEGINS STATION 2771+40.00  
CUMBERLAND COUNTY

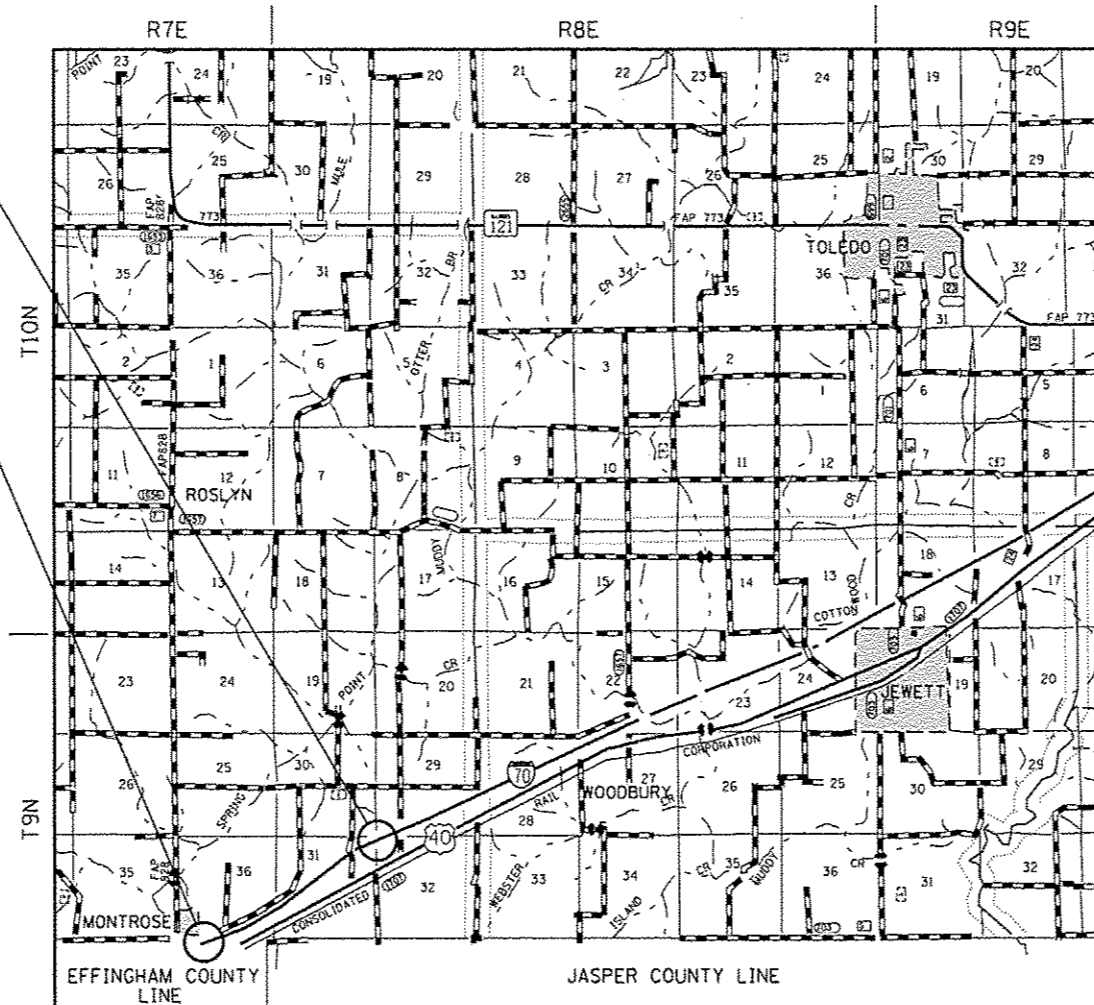


FULL SIZE PLANS HAVE BEEN PREPARED USING STANDARD ENGINEERING SCALES. REDUCED SIZED PLANS WILL NOT CONFORM TO STANDARD SCALES. IN MAKING MEASUREMENTS ON REDUCED PLANS, THE ABOVE SCALES MAY BE USED.

J.U.L.I.E.  
JOINT UTILITY LOCATION INFORMATION FOR EXCAVATION  
1-800-892-0123  
OR 811

PROJECT ENGINEER: TOM ROMAN  
PROJECT MANAGER: JENNIFER SHULL  
PHONE: (217)-342-8361

CONTRACT NO. 74386



GROSS LENGTH = 10,061.82 FT. = 1.91 MILES  
NET LENGTH = 10,061.82 FT. = 1.91 MILES

STATE OF ILLINOIS  
DEPARTMENT OF TRANSPORTATION  
DIVISION OF HIGHWAYS

SUBMITTED May 09 20 14  
Tom L. Drishel  
DEPUTY DIRECTOR OF HIGHWAYS, REGION ENGINEER

June 27 20 14  
John D. Baranzelli, P.E.  
ENGINEER OF DESIGN AND ENVIRONMENT

June 27 20 14  
Omer Aman, P.E.  
DIRECTOR OF HIGHWAYS, CHIEF ENGINEER

PRINTED BY THE AUTHORITY  
OF THE STATE OF ILLINOIS

## INDEX OF SHEETS

SHEET NO.	ITEM
1	COVER SHEET
2	INDEX OF SHEETS AND GENERAL NOTES
3-4	SUMMARY OF QUANTITIES
5	TYPICAL SECTIONS
6-7	STAGING TYPICAL CROSS SECTIONS
8	DETAIL OF HMA RUNDOWN
9-10	SCHEDULE OF QUANTITIES
11-15	PLAN SHEETS
16-17	PAVEMENT MARKING DETAILS

THE FOLLOWING STANDARDS ARE A PART OF THESE PLANS AND ARE INCLUDED FOLLOWING THE LAST NUMBERED SHEET OF THE PLANS.

STD. NO.	DESCRIPTION
000001-06	STANDARD SYMBOLS, ABBREVIATIONS, AND PATTERNS
001001-02	AREAS OF REINFORCEMENT BARS
001006	DECIMAL OF AN INCH AND OF A FOOT
442001-04	CLASS A PATCHES
642001-02	SHOULDER RUMBLE STRIPS, 16 IN.
701101-04	OFF-ROAD OPERATIONS, MULTILANE, 15' TO 24" FROM PAVEMENT EDGE
701106-02	OFF-ROAD OPERATIONS, MULTILANE, MORE THAN 15' AWAY
701400-07	APPROACH TO LANE CLOSURE, FREEWAY/EXPRESSWAY
701401-08	LANE CLOSURE, FREEWAY/EXPRESSWAY
701406-08	LANE CLOSURE, FREEWAY/EXPRESSWAY, DAY OPERATIONS ONLY
701426-06	LANE CLOSURE, MULTILANE, INTERMITTENT OR MOVING OPERATION, FOR SPEEDS >= 45 MPH
701901-03	TRAFFIC CONTROL DEVICES
780001-04	TYPICAL PAVEMENT MARKINGS
781001-03	TYPICAL APPLICATIONS RAISED REFLECTIVE PAVEMENT MARKERS

## GENERAL NOTES

THIS SECTION SHALL BE CONSTRUCTED IN ACCORDANCE WITH THE PLANS; THE "STANDARD SPECIFICATIONS FOR ROAD AND BRIDGE CONSTRUCTION" ADOPTED JANUARY 1, 2012; AND THE SPECIAL PROVISIONS INCLUDED IN THE PROPOSAL.

THIS PROJECT IS LOCATED ON WEST BOUND I-70 (I-70) IN CUMBERLAND COUNTY, FROM THE EFFINGHAM COUNTY LINE TO 2 MILES EAST OF THE EFFINGHAM COUNTY LINE. THE WORK INCLUDED IN SECTION (18-45)RS-4 CONSISTS OF PATCHING, HOT-MIX ASPHALT SURFACE REMOVAL, HOT-MIX ASPHALT RESURFACING, PAVEMENT MARKING, AND ANY OTHER WORK NECESSARY TO COMPLETE THE SECTION.

PAVEMENT MARKING SHALL BE APPLIED IN ACCORDANCE WITH SECTION 780 OF THE STANDARD SPECIFICATIONS. SHORT TERM PAVEMENT MARKING SHALL BE APPLIED TO THE MILLED SURFACE, BITUMINOUS MATERIALS (PRIME COAT), AND HOT-MIX ASPHALT SURFACE COURSE AS SPECIFIED IN SECTION 703 OF THE STANDARD SPECIFICATIONS. TEMPORARY TAPE SHALL BE USED ON THE SURFACE COURSE AND HOT-MIX ASPHALT SHOULDERS. PAINT SHALL BE USED ON MILLED SURFACES.

THE TOTAL QUANTITY OF MODIFIED URETHANE PAVEMENT MARKING - LINE 4" CONSISTS OF 10062 FEET OF YELLOW AND 10062 FEET OF WHITE.

THE TOTAL QUANTITY OF PREFORMED PLASTIC PAVEMENT MARKING, TYPE B - INLAID - LINE 6" CONSISTS OF 2520 FEET OF WHITE.

THE RAISED REFLECTIVE PAVEMENT MARKERS SHALL BE PLACED AS DOUBLE MARKERS ON I-70 AS SHOWN ON STANDARD 781001. THE TOTAL QUANTITY OF RAISED REFLECTIVE PAVEMENT MARKERS IS 250 ONE-WAY CRYSTAL.

ALL OF THE EXISTING HMA SHALL BE REMOVED OFF THE ORIGINAL CONCRETE PAVEMENT. THE SHOULDERS SHALL BE MILLED AT INTERMITTENT LOCATIONS TO ALLOW FOR ADEQUATE DRAINAGE. THE LOCATIONS SHALL BE DETERMINED BY THE ENGINEER IN THE FIELD. THE COST OF ALLOWING ADEQUATE DRAINAGE SHALL BE INCLUDED IN THE COST OF THE PAY ITEMS INVOLVED.

## GENERAL NOTES (Cont'd)

AN ESTIMATED QUANTITY OF HOT-MIX ASPHALT SHOULDERS AND PAVED SHOULDER REMOVAL HAS BEEN INCLUDED FOR ANY NECESSARY SHOULDER REPAIR. THE QUANTITIES SHOWN IN THE PLANS ARE ESTIMATES ONLY, THE FINAL LOCATIONS AND QUANTITIES SHALL BE DETERMINED BY THE ENGINEER IN THE FIELD.

THE EXISTING PAVEMENT SHALL BE PATCHED IN ACCORDANCE WITH SECTION 442 OF THE STANDARD SPECIFICATIONS AND THE SPECIAL PROVISIONS. CLASS A PAVEMENT PATCHING IS INCLUDED FOR PATCHING THE PAVEMENT ON I-70. THE PAVEMENT SHALL BE PATCHED AFTER THE EXISTING HMA HAS BEEN REMOVED FROM THE LANE UNDER CONSTRUCTION. AN ESTIMATED QUANTITY OF HOT-MIX ASPHALT FOR PATCHING POTHOLES (COLD MIX) HAS BEEN INCLUDED FOR ANY NECESSARY POTHOLE PATCHING. THE QUANTITIES OF PATCHING AND POTHOLE PATCHING SHOWN IN THE PLANS ARE ESTIMATES ONLY, THE FINAL LOCATIONS AND QUANTITIES SHALL BE DETERMINED BY THE ENGINEER IN THE FIELD.

THE RESIDENT ENGINEER SHALL BE THE SOLE JUDGE CONCERNING THE CURING TIME FOR THE VARIOUS HOT-MIX ASPHALT LIFTS.

THE CONTRACTOR WILL BE REQUIRED TO USE A MATERIAL TRANSFER DEVICE AT ALL TIMES WHEN CONSTRUCTING THE POLYMERIZED HMA SURFACE COURSE. STONE MATRIX ASPHALT, N80. THE HMA CROSS SECTION TO BE CONSTRUCTED IS NOT CONSIDERED FULL-DEPTH HMA PAVEMENT.

THE CONTRACTOR SHALL PROVIDE INTERNET ACCESSIBILITY TO THE HOT-MIX ASPHALT PLANT QUALITY CONTROL LAB SO THAT HOT-MIX ASPHALT PLANT REPORTS CAN BE E-MAILED TO THE DISTRICT HEADQUARTERS. THIS WORK SHALL BE INCLUDED IN THE COST OF ALL HOT-MIX ASPHALT ITEMS.

IN ADDITION TO THE REQUIREMENTS IN ARTICLE 701.15(j), A LAPTOP COMPUTER SHALL BE SUPPLIED BY THE CONTRACTOR.

A UNIFORMLY STRAIGHT SAW CUT SHALL BE MADE AT LOCATIONS WHERE PROPOSED NEW CONSTRUCTION WILL ABUT EXISTING HOT-MIX ASPHALT SURFACES. THE SAW CUT SHALL BE MADE FULL DEPTH THROUGH THE EXISTING SURFACE. THIS WORK WILL BE CONSIDERED INCLUDED IN THE COST OF THE CONTRACT ITEMS INVOLVED AND NO EXTRA COMPENSATION WILL BE ALLOWED.

THE FOLLOWING MIXTURE REQUIREMENTS ARE APPLICABLE FOR THIS PROJECT:

APPLICATION	AC/PG	DESIGN AIR VOIDS	MIXTURE COMPOSITION	FRICTION AGGREGATE
HMA SURFACE COURSE - POLYMERIZED HMA SURFACE COURSE, SMA, N80	SBS PG 76-22	4.0% @ N=80	1L - 12.5	N/A
TOP BINDER COURSE LIFT - POLYMERIZED HMA BINDER COURSE, 1L-19.0 FC, N90	SBS PG 70-22	4.0% @ N=90	1L - 19.0 FC	N/A
BINDER COURSE LIFT #1 - HMA BINDER COURSE, 1L-19.0 FC, N90	PG 64-22	4.0% @ N=90	1L - 19.0 FC	N/A
HMA SHOULDERS - 2" OVERLAY AND REPAIR TOP LIFT (2") HMA SURFACE COURSE, MIX "C", N90	PG 64-22	4.0% @ N=90	1L - 9.5	MIX C
HMA SHOULDER REPAIR (FULL DEPTH) BOTTOM LIFTS - HMA BINDER COURSE, 1L-19.0, N90	PG 64-22	4.0% @ N=90	1L - 19.0	N/A

THE FOLLOWING RATES OF APPLICATION HAVE BEEN USED IN THE CALCULATING PLAN QUANTITIES:

BITUMINOUS MATERIALS (PRIME COAT)	0.05 LBS/SQ FT
BITUMINOUS MATERIALS (PRIME COAT)-FOG COAT	0.025 LBS/SQ FT
STONE MATRIX HOT-MIX ASPHALT	130 LBS/SQ YD/INCH
HOT-MIX ASPHALT BINDER	112 LBS/SQ YD/INCH
HOT-MIX ASPHALT SHOULDERS	112 LBS/SQ YD/INCH

FILE NAME =	USER NAME = staffanmk	DESIGNED -	REVISED -	<b>STATE OF ILLINOIS DEPARTMENT OF TRANSPORTATION</b>	<b>INDEX OF SHEETS AND GENERAL NOTES</b>				F.A.I. RTE.	SECTION	COUNTY	TOTAL SHEETS	SHEET NO.
c:\pwwork\pwwork\staffanmk\0293160\07	4386-ah1-index.dgn	DRAWN -	REVISED -		70	(18-45)RS-4	CUMBERLAND	17	2				
Default	PLOT SCALE = 1/8" = 1'-0"	CHECKED -	REVISED -		CONTRACT NO. 74386								
	PLOT DATE = 5/9/2014	DATE -	REVISED -		ILLINOIS FED. AID PROJECT								
				SCALE: N/A		SHEET 1 OF 1 SHEETS		STA. TO STA.					

SUMMARY OF QUANTITIES			TOTAL QUANTITIES	CONSTRUCTION TYPE CODE		
CODE NO	ITEM	UNIT		90% FEDERAL 10% STATE 0005		
40603092	HOT-MIX ASPHALT BINDER COURSE, IL-19.0 FG, N90	TON	4505	4505		
40603153	POLYMERIZED HOT-MIX ASPHALT SURFACE COURSE, STONE MATRIX ASPHALT, N80	TON	3544	3544		
40603243	POLYMERIZED HOT-MIX ASPHALT BINDER COURSE, IL-19.0, FG, N90	TON	3293	3293		
44000157	HOT-MIX ASPHALT SURFACE REMOVAL, 2"	SO YD	17888	17888		
44000162	HOT-MIX ASPHALT SURFACE REMOVAL, 3 1/4"	SO YD	427	427		
44000175	HOT-MIX ASPHALT SURFACE REMOVAL, 6 1/2"	SO YD	15582	15582		
44000184	HOT-MIX ASPHALT SURFACE REMOVAL, 8 1/2"	SO YD	10822	10822		
44004250	PAVED SHOULDER REMOVAL	SO YD	1431	1431		
44200525	CLASS A PATCHES, TYPE I, 8 INCH	SO YD	8	8		
44200529	CLASS A PATCHES, TYPE II, 8 INCH	SO YD	188	188		
44200533	CLASS A PATCHES, TYPE III, 8 INCH	SO YD	145	145		
44200535	CLASS A PATCHES, TYPE IV, 8 INCH	SO YD	163	163		

SUMMARY OF QUANTITIES			TOTAL QUANTITIES	CONSTRUCTION TYPE CODE		
CODE NO	ITEM	UNIT		90% FEDERAL 10% STATE 0005		
44213000	PATCHING REINFORCEMENT	SO YD	504	504		
44213200	SAW CUTS	FOOT	2594	2594		
44213204	TIE BARS 3/4"	EACH	134	134		
48203100	HOT-MIX ASPHALT SHOULDERS	TON	3125	3125		
64200116	SHOULDER RUMBLE STRIPS, 16 INCH	FOOT	20124	20124		
67000400	ENGINEER'S FIELD OFFICE, TYPE A	CAL MO	4	4		
67100100	MOBILIZATION	L SUM	1	1		
70100700	TRAFFIC CONTROL AND PROTECTION, STANDARD 701406	L SUM	1	1		
70100800	TRAFFIC CONTROL AND PROTECTION, STANDARD 701401	L SUM	1	1		
70103815	TRAFFIC CONTROL SURVEILLANCE	CAL DA	10	10		
70300100	SHORT TERM PAVEMENT MARKING	FOOT	9040	9040		
70300220	TEMPORARY PAVEMENT MARKING - LINE 4"	FOOT	20124	20124		
70300240	TEMPORARY PAVEMENT MARKING - LINE 6"	FOOT	2520	2520		

FILE NAME =	USER NAME = steffennk	DESIGNED -	REVISED -
c:\pwork\pudat\steffennk\08093168\07	*3BE-plt-a0q.dgn	DRAWN -	REVISED -
	PLOT SCALE = 100.0000 1/1m	CHECKED -	REVISED -
Default	PLOT DATE = 8/9/2014	DATE -	REVISED -

STATE OF ILLINOIS  
DEPARTMENT OF TRANSPORTATION

SUMMARY OF QUANTITIES

SCALE: N/A SHEET 1 OF 2 SHEETS STA. TO STA.

F.A.I. RTE.	SECTION	COUNTY	TOTAL SHEETS	SHEET NO.
70	118-451RS-4	CUMBERLAND	17	3
ILLINOIS FED. AID PROJECT			CONTRACT NO. 74386	

SUMMARY OF QUANTITIES			TOTAL QUANTITIES	CONSTRUCTION TYPE CODE	
CODE NO	ITEM	UNIT		90% FEDERAL 10% STATE 0005	
70301000	WORK ZONE PAVEMENT MARKING REMOVAL	50 FT	603	603	
* 78004230	PREFORMED PLASTIC PAVEMENT MARKING, TYPE B - INLAID - LINE 6"	FOOT	2520	2520	
* 78009004	MODIFIED URETHANE PAVEMENT MARKING - LINE 4"	FOOT	20124	20124	
* 78100100	RAISED REFLECTIVE PAVEMENT MARKER	EACH	250	250	
* 78100300	REPLACEMENT REFLECTOR	EACH	30	30	
78300100	PAVEMENT MARKING REMOVAL	50 FT	7968	7968	
X4060110	BITUMINOUS MATERIALS (PRIME COAT)	POUND	32006	32006	
<del>X4063500</del>	<del>PRELIMINARY TEST STRIP</del>	<del>EACH</del>	<del>1</del>	<del>1</del>	
X7010410	SPEED DISPLAY TRAILER	CAL MO	3	3	
X7015005	CHANGEABLE MESSAGE SIGN	CAL DA	14	14	
X7830050	RAISED REFLECTIVE PAVEMENT MARKER, REFLECTOR REMOVAL	EACH	30	30	
* X7830070	GROOVING FOR RECESSED PAVEMENT MARKING 5"	FOOT	20124	20124	
	* SPECIALTY ITEMS				

SUMMARY OF QUANTITIES			TOTAL QUANTITIES	CONSTRUCTION TYPE CODE	
CODE NO	ITEM	UNIT		90% FEDERAL 10% STATE 0005	
Z0005010	HOT-MIX ASPHALT FOR PATCHING POTHOLES (COLD MIX)	TON	2	2	
Z0034105	MATERIAL TRANSFER DEVICE	TON	11343	11343	

FILE NAME =	USER NAME = staffanmk	DESIGNED -	REVISED -
or:\p\work\pvidot\staffanmk\02393168\1077	*386-ahs-soq.dgn	DRAWN -	REVISED -
Default	PLOT SCALE = 1/8" = 1' / in.	CHECKED -	REVISED -
	PLOT DATE = 5/9/2014	DATE -	REVISED -

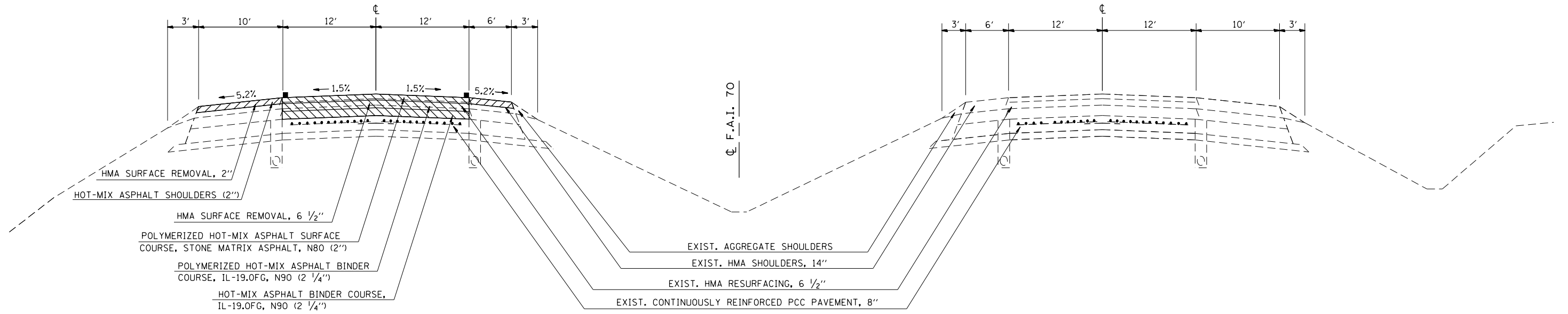
STATE OF ILLINOIS  
DEPARTMENT OF TRANSPORTATION

SUMMARY OF QUANTITIES	
SCALE: N/A	SHEET 2 OF 2 SHEETS STA. TO STA.

F.A.I. RTE.	SECTION	COUNTY	TOTAL SHEETS	SHEET NO.
70	(18-45)RS-4	CUMBERLAND	17	4
CONTRACT NO. 74386				
ILLINOIS FED. AID PROJECT				

### TYPICAL CROSS SECTION

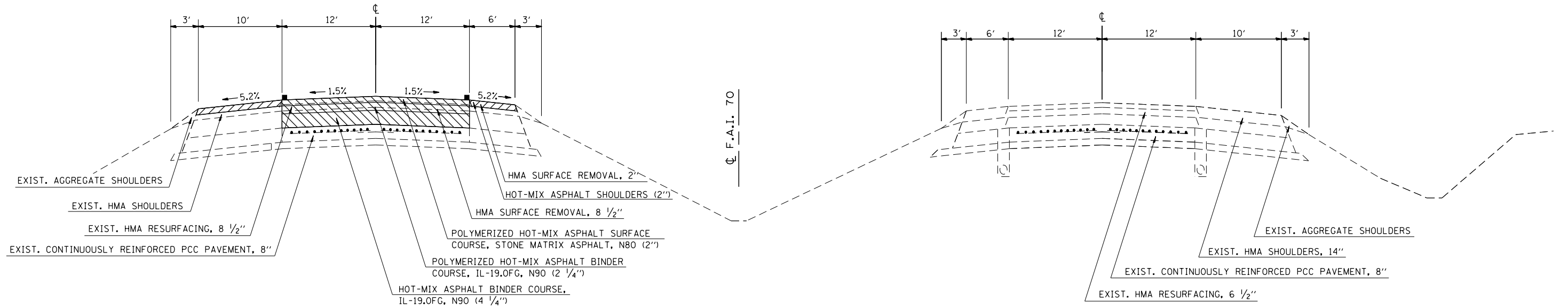
STA. 2771+40.00 TO STA. 2772+59.71  
 STA. 2772+59.71 (BK) = STA. 9+02.89 (AH) - STA. EQ.  
 STA. 9+02.89 TO STA. 9+41.60  
 STA. 50+00.00 TO STA. 108+45.00



NOTE: NOT DRAWN TO SCALE

### TYPICAL CROSS SECTION

STA. 9+41.60 TO STA. 50+00.00



NOTE: NOT DRAWN TO SCALE

FILE NAME =	USER NAME = steffenmk	DESIGNED -	REVISED -
ci:\pw\work\p\idot\steffenmk\d0393168\074386-sh-typical.dgn		DRAWN -	REVISED -
		CHECKED -	REVISED -
		DATE -	REVISED -
Default	PLOT DATE = 5/9/2014		

STATE OF ILLINOIS  
 DEPARTMENT OF TRANSPORTATION

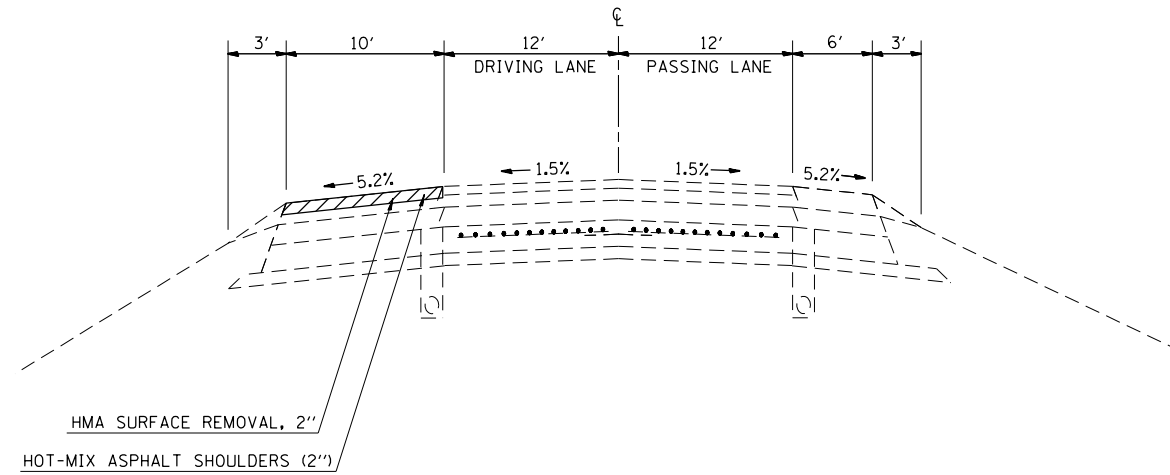
#### TYPICAL CROSS SECTIONS

SCALE: N/A SHEET 1 OF 1 SHEETS STA. TO STA.

F.A.I. RTE.	SECTION	COUNTY	TOTAL SHEETS	SHEET NO.
70	(18-45)RS-4	CUMBERLAND	17	5
CONTRACT NO. 74386				
ILLINOIS FED. AID PROJECT				

**PRE-STAGE TYPICAL CROSS SECTION**

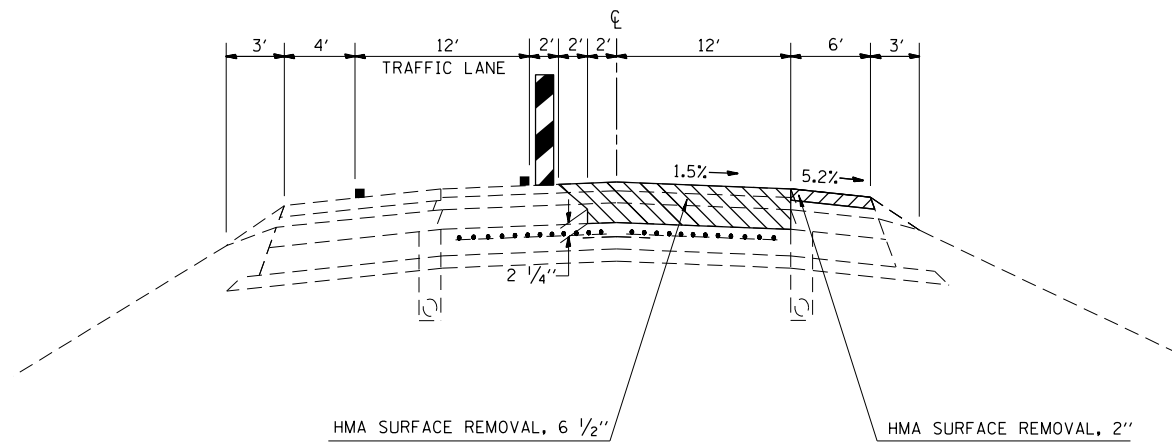
WESTBOUND LANE ONLY



NOTE: NOT TO DRAWN TO SCALE

**STAGE 1A TYPICAL CROSS SECTION**

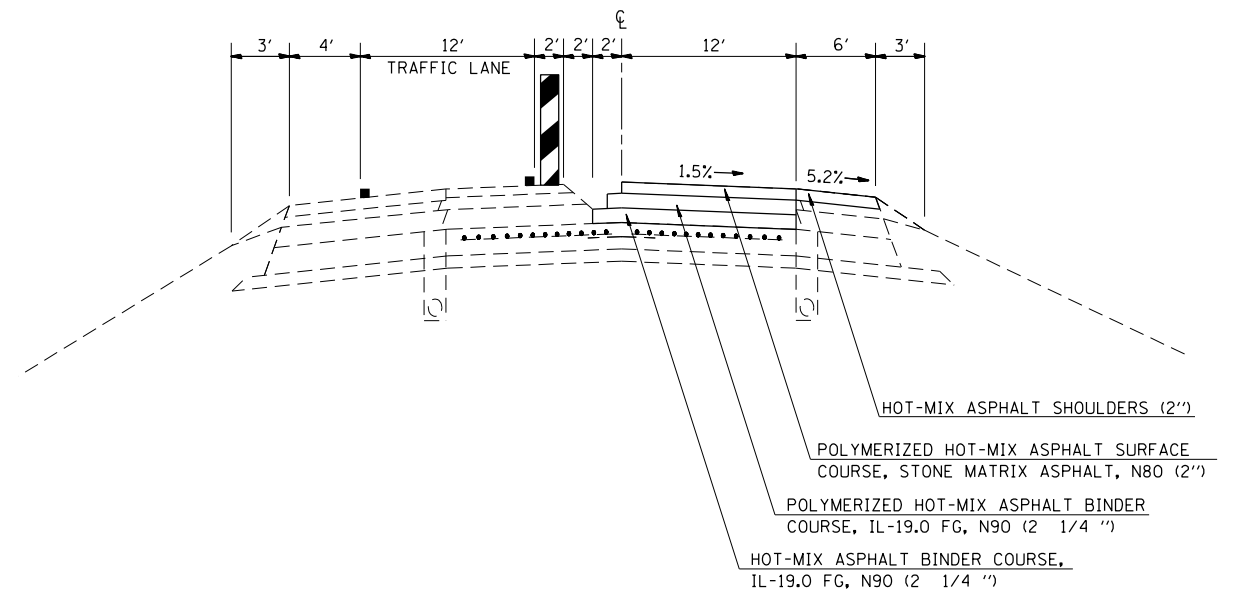
WESTBOUND LANE ONLY



NOTE: NOT TO DRAWN TO SCALE

**STAGE 1B TYPICAL CROSS SECTION**

WESTBOUND LANE ONLY



FILE NAME =	USER NAME = steffenmk	DESIGNED -	REVISED -
c:\pwork\pwork\stevfenmk\d0393168\074386-sh1-stgtypicals.dgn		DRAWN -	REVISED -
Default	PLOT SCALE = 100.0000' / 1in.	CHECKED -	REVISED -
	PLOT DATE = 5/9/2014	DATE -	REVISED -

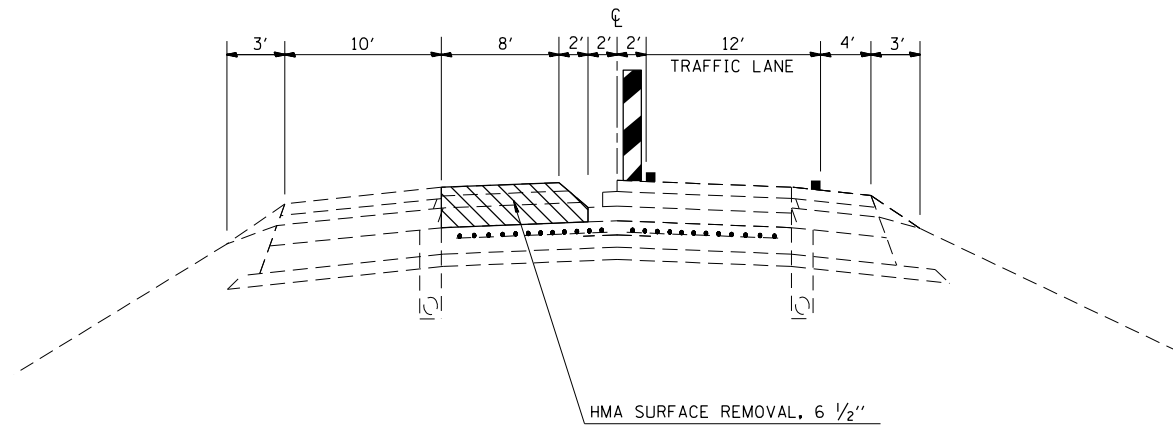
**STATE OF ILLINOIS  
DEPARTMENT OF TRANSPORTATION**

**STAGING TYPICAL CROSS SECTIONS**

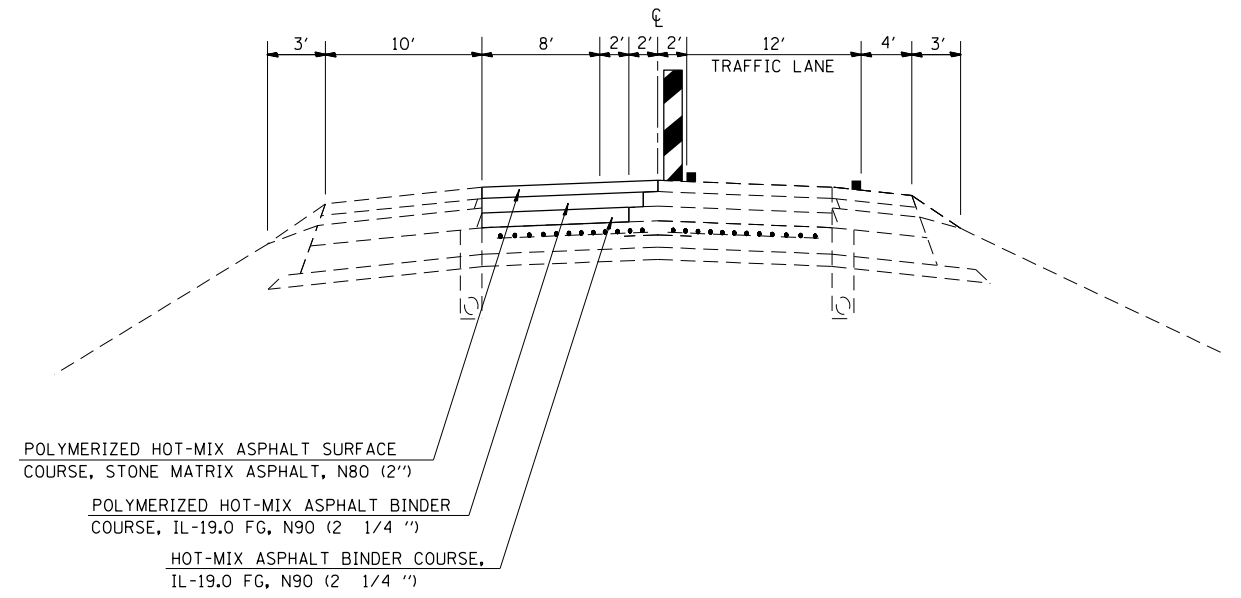
SCALE: N/A      SHEET 1 OF 2 SHEETS      STA.      TO STA.

F.A.I. RTE.	SECTION	COUNTY	TOTAL SHEETS	SHEET NO.
70	(18-45)RS-4	CUMBERLAND	17	6
CONTRACT NO. 74386			ILLINOIS FED. AID PROJECT	

STAGE 2A TYPICAL CROSS SECTION  
WESTBOUND LANE ONLY



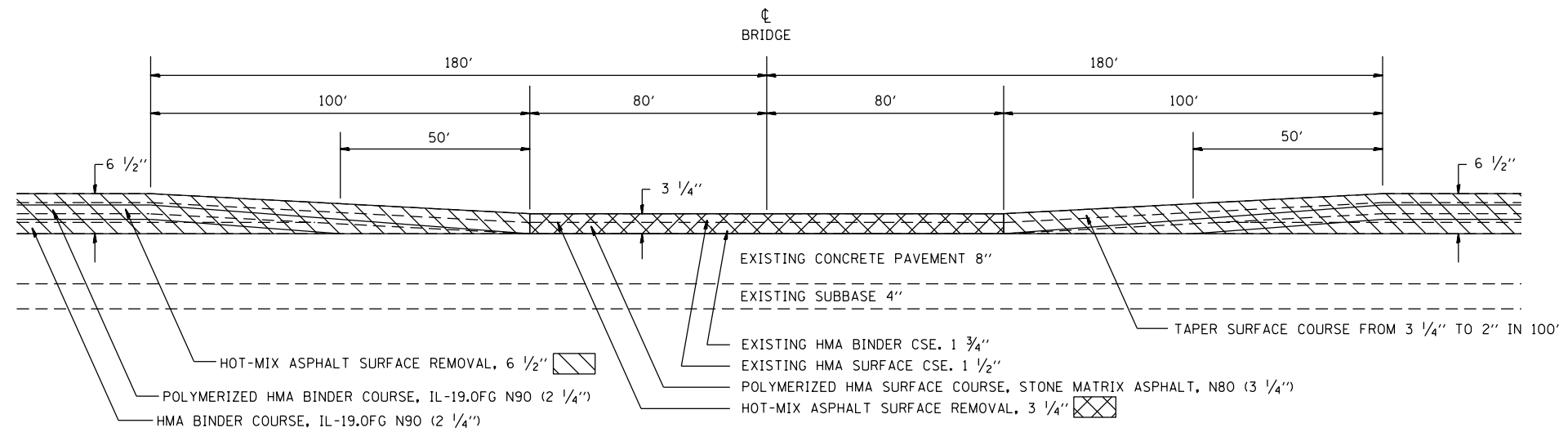
STAGE 2B TYPICAL CROSS SECTION  
WESTBOUND LANE ONLY



NOTE: NOT TO DRAWN TO SCALE

FILE NAME = c:\pw\work\p\dot\steffenmk\d0393168\07	USER NAME = steffenmk 74386-sh-t-stgtypicals.dgn	DESIGNED - DRAWN -	REVISED - REVISED -	<b>STATE OF ILLINOIS DEPARTMENT OF TRANSPORTATION</b>	<b>STAGING TYPICAL CROSS SECTIONS</b>			F.A.I. RTE. 70	SECTION (18-45)RS-4	COUNTY CUMBERLAND	TOTAL SHEETS 17	SHEET NO. 7
Default	PLOT SCALE = 100.0000' / in. PLOT DATE = 5/9/2014	CHECKED - DATE -	REVISED - REVISED -		SCALE: N/A	SHEET 2 OF 2 SHEETS	STA. TO STA.	CONTRACT NO. 74386				
ILLINOIS FED. AID PROJECT												

**DETAIL OF HMA RUNDOWN AT WB OVERHEAD S.N. 018-0035**  
**STA. 91+35.20**



NOTE: NOT TO SCALE

FILE NAME =	USER NAME = steffenmk	DESIGNED -	REVISED -	<b>STATE OF ILLINOIS DEPARTMENT OF TRANSPORTATION</b>	<b>DETAIL OF HMA RUNDOWN</b>			F.A.I. RTE.	SECTION	COUNTY	TOTAL SHEETS	SHEET NO.
ci:\pw\work\p\idot\steffenmk\d0393168\07	74386-sh1-details.dgn	DRAWN -	REVISED -		70	(18-45)RS-4	CUMBERLAND	17	8			
Default	PLOT SCALE = 100.0000' / 1in.	CHECKED -	REVISED -		CONTRACT NO. 74386			ILLINOIS FED. AID PROJECT				
	PLOT DATE = 5/9/2014	DATE -	REVISED -		SCALE: N/A	SHEET 1	OF 1 SHEETS	STA.	TO STA.			



RESURFACING SCHEDULE

STATION TO STATION	LENGTH FOOT	HOT-MIX ASPHALT SURFACE REMOVAL, 2" SQ YD	HOT-MIX ASPHALT SURFACE REMOVAL, 3 1/4" SQ YD	HOT-MIX ASPHALT SURFACE REMOVAL, 6 1/2" SQ YD	HOT-MIX ASPHALT SURFACE REMOVAL, 8 1/2" SQ YD	BITUMINOUS MATERIALS (PRIME COAT) POUND	HOT-MIX ASPHALT BINDER COURSE, IL-19.0 FG, N90 TON	POLYMERIZED HOT-MIX ASPHALT BINDER COURSE, IL-19.0, FG, N90 TON	POLYMERIZED HOT-MIX ASPHALT SURFACE COURSE, STONE MATRIX ASPHALT, N80 TON	MATERIAL TRANSFER DEVICE TON	SHOULDER RUMBLE STRIPS, 16 INCH FOOT
WB I-70											
2771+40.00 TO 2772+59.71	119.7	212.8	0.0	319.2	0.0	383.1	40.2	40.2	41.5	121.9	239.4
2772+59.71 (BK) = 9+02.89 (AH)	0.0	0.0	0.0	0.0	0.0	0.0	0.0	0.0	0.0	0.0	0.0
9+02.89 TO 9+41.60	38.7	68.8	0.0	103.2	0.0	123.9	13.0	13.0	13.4	39.4	77.4
9+41.60 TO 50+00.00	4058.4	7214.9	0.0	0.0	10822.4	12986.9	2575.7	1363.6	1406.9	5346.2	8116.8
50+00.00 TO 89+55.20	3955.2	7031.5	0.0	10547.2	0.0	12656.6	1328.9	1328.9	1371.1	4028.9	7910.4
89+55.20 TO 90+55.20	100.0	177.8	0.0	266.7	0.0	320.0	16.8	16.8	45.5	79.1	200.0
90+55.20 TO 92+15.20	160.0	284.4	426.7	0.0	0.0	320.0	0.0	0.0	90.1	90.1	320.0
92+15.20 TO 93+15.20	100.0	177.8	0.0	266.7	0.0	320.0	16.8	16.8	45.5	79.1	200.0
93+15.20 TO 108+45.00	1529.8	2719.6	0.0	4079.5	0.0	4895.4	514.0	514.0	530.3	1558.3	3059.6
TOTALS		17888.0	427.0	15582.0	10822.0	32006.0	4505.0	3293.0	3544.0	11343.0	20124.0

PAVEMENT MARKING SCHEDULE

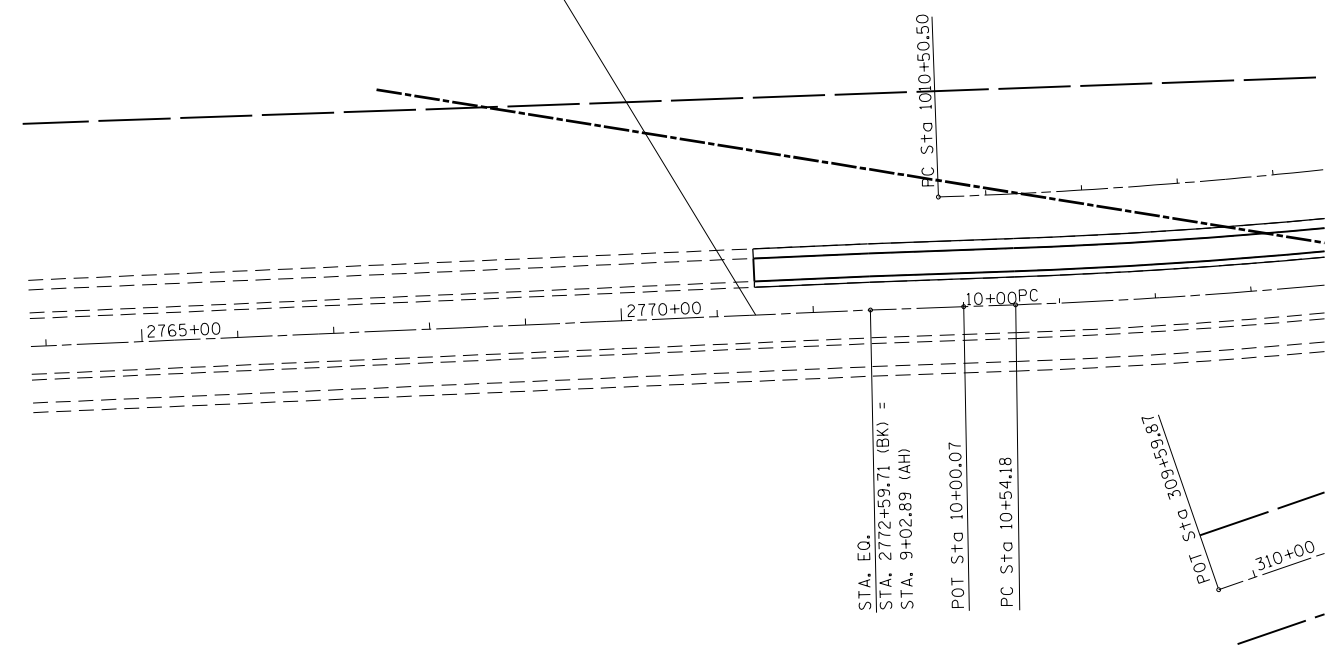
STATION TO STATION	LENGTH	MODIFIED URETHANE PAVEMENT MARKING - LINE 4" WHITE	MODIFIED URETHANE PAVEMENT MARKING - LINE 4" YELLOW	PERFORMED PLASTIC PAVEMENT MARKING, TYPE B - INLAID-LINE-6" WHITE	GROOVING FOR RECESSED PAVEMENT MARKING 5"	TEMPORARY PAVEMENT MARKING - LINE 4"	TEMPORARY PAVEMENT MARKING - LINE 6"	SHORT-TERM PAVEMENT MARKING	WORK ZONE PAVEMENT MARKING REMOVAL	PAVEMENT MARKING REMOVAL	RAISED REFLECTIVE PAVEMENT MARKER
	FOOT	FOOT	FOOT	FOOT	FOOT	FOOT	FOOT	FOOT	SQ FT	SQ FT	EACH
WB I-70											
2771+40.00 TO 2772+59.71	119.7	119.7	119.7	30.0	239.4	239.4	30.0	100.0	6.7	94.8	2.0
2772+59.71 (BK) = 9+02.89 (AH)	0.0	0.0	0.0	0.0	0.0	0.0	0.0	0.0	0.0	0.0	0.0
9+02.89 TO 108+45.00	9942.1	9942.1	9942.1	2490.0	19884.2	19884.2	2490.0	8940.0	596.0	7873.1	248.0
TOTALS		10062.0	10062.0	2520.0	20124.0	20124.0	2520.0	9040.0	603.0	7968.0	250.0

PATCHING SCHEDULE

	CLASS A PATCHES, TYPE I, 8 INCH	CLASS A PATCHES, TYPE II, 8 INCH	CLASS A PATCHES, TYPE III, 8 INCH	CLASS A PATCHES, TYPE IV, 8 INCH	PATCHING REINFORCEMENT	SAW CUTS	TIE BARS 3/4"	PAVED SHOULDER REMOVAL	HOT-MIX ASPHALT SHOULDERS
	SQ YD	SQ YD	SQ YD	SQ YD	SQ YD	FOOT	EACH	SQ YD	TON
TOTALS	8.0	188.0	145.0	163.0	504.0	2594.0	134.0	1431.0	1122.0



FAI ROUTE 70 (I-70)  
SECTION (18-45)RS-4  
CUMBERLAND COUNTY  
PROJECT BEGINS STA. 2771+40.00



FILE NAME =	USER NAME = steffenmk	DESIGNED -	REVISED -
ci:\pw\work\p\dot\steffenmk\d0393168\074386-sh-t-plan.dgn		DRAWN -	REVISED -
	PLOT SCALE = 200.0000' / in.	CHECKED -	REVISED -
	PLOT DATE = 5/9/2014	DATE -	REVISED -

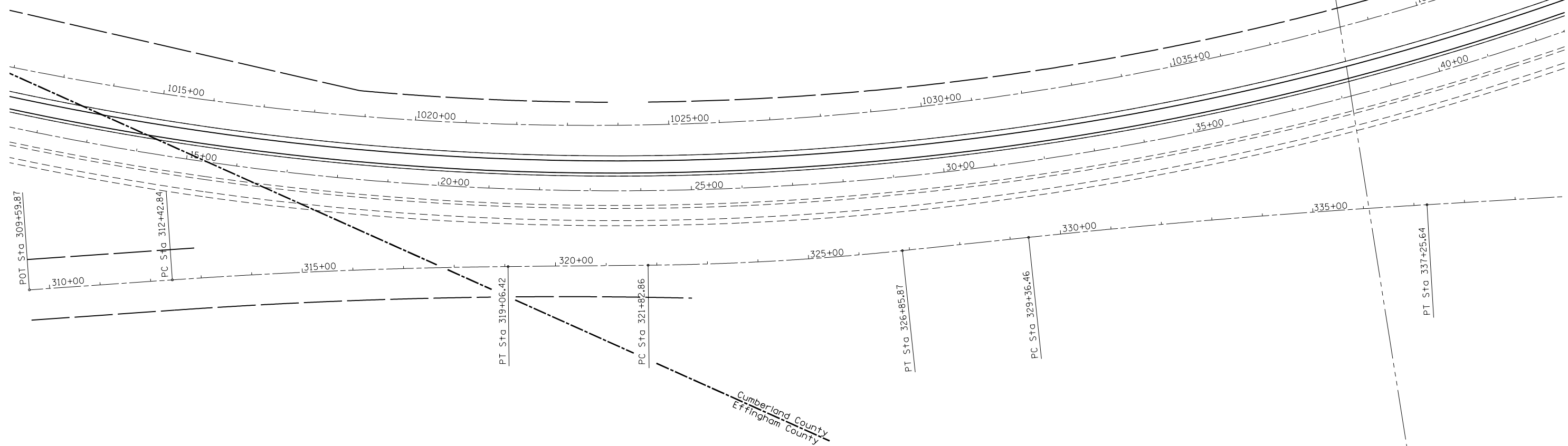
**STATE OF ILLINOIS  
DEPARTMENT OF TRANSPORTATION**

<b>PLAN SHEET</b>	
SCALE: 100	SHEET NO. 1 OF 5 SHEETS
STA. 2771+40	TO STA. 13+00

F.A.I. RTE.	SECTION	COUNTY	TOTAL SHEETS	SHEET NO.
70	(18-45)RS-4	CUMBERLAND	17	11
CONTRACT NO. 74386			ILLINOIS FED. AID PROJECT	



EXIST. CURVE 01 C 70 P.I. STA. = 27+00.00 Δ = 32°03'12" D = 1°00'00" R = 5729.58 T = 1645.82 L = 3205.33 E = 231.70 e = 0.028 T.R. = S.E. RUN = P.C. = STA. 10+45.18 P.T. = STA. 42+56.51	EXIST. CURVE 01 A WB P.I. STA. = 47' LT FWD TAN 0+07.85 Δ = 32°03'12" D = 1°00'00" R = 5729.58 T = 1645.82 L = 3205.33 E = 231.70 e = 0.028 T.R. = S.E. RUN = P.C. = STA. 10+35.89 44' LT P.T. = STA. 42+67.36 47' LT	EXIST. CURVE 01 B EB P.I. STA. = 44' RT BK TAN 27+18+20 Δ = 32°03'12" D = 1°00'00" R = 5729.58 T = 1645.82 L = 3205.33 E = 231.70 e = 0.028 T.R. = S.E. RUN = P.C. = STA. 10+72.47 44' RT TAN P.T. = STA. 16+37.97 47' RT FWD TAN
--	---	---



Cumberland County  
Ettingham County

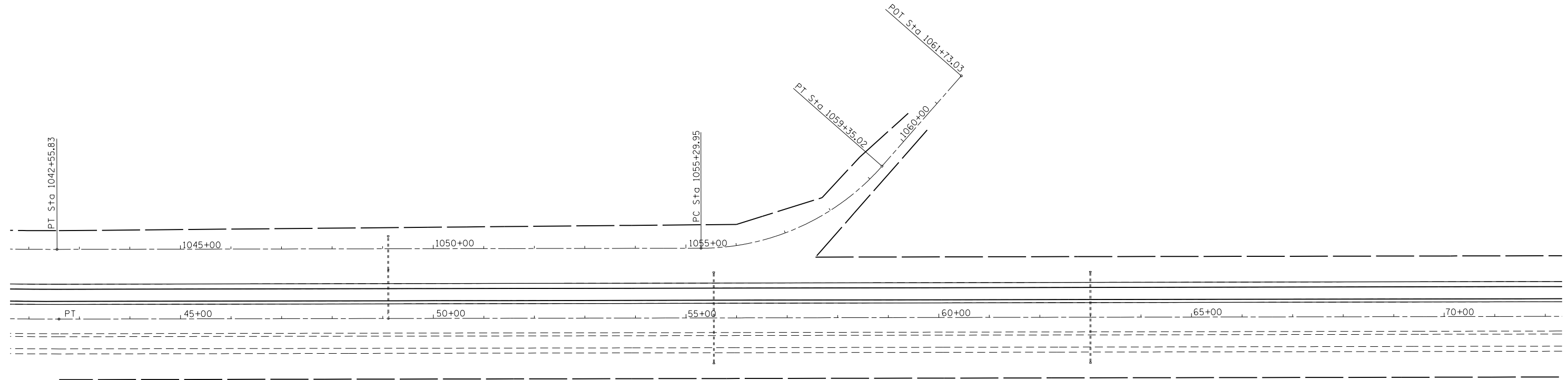
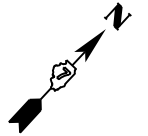
FILE NAME =	USER NAME = steffenmk	DESIGNED -	REVISED -
ei:\pwork\pwork\steffenmk\d0393168\074386-sh1-plan.dgn		DRAWN -	REVISED -
	PLOT SCALE = 200.0000' / in.	CHECKED -	REVISED -
	PLOT DATE = 5/9/2014	DATE -	REVISED -

**STATE OF ILLINOIS  
DEPARTMENT OF TRANSPORTATION**

**PLAN SHEET**

SCALE: 100      SHEET NO. 2 OF 5 SHEETS      STA. 12+00      TO STA. 42+00

F.A.I. RTE.	SECTION	COUNTY	TOTAL SHEETS	SHEET NO.
70	(18-4)RS-4	CUMBERLAND	17	12
ILLINOIS FED. AID PROJECT			CONTRACT NO. 74386	



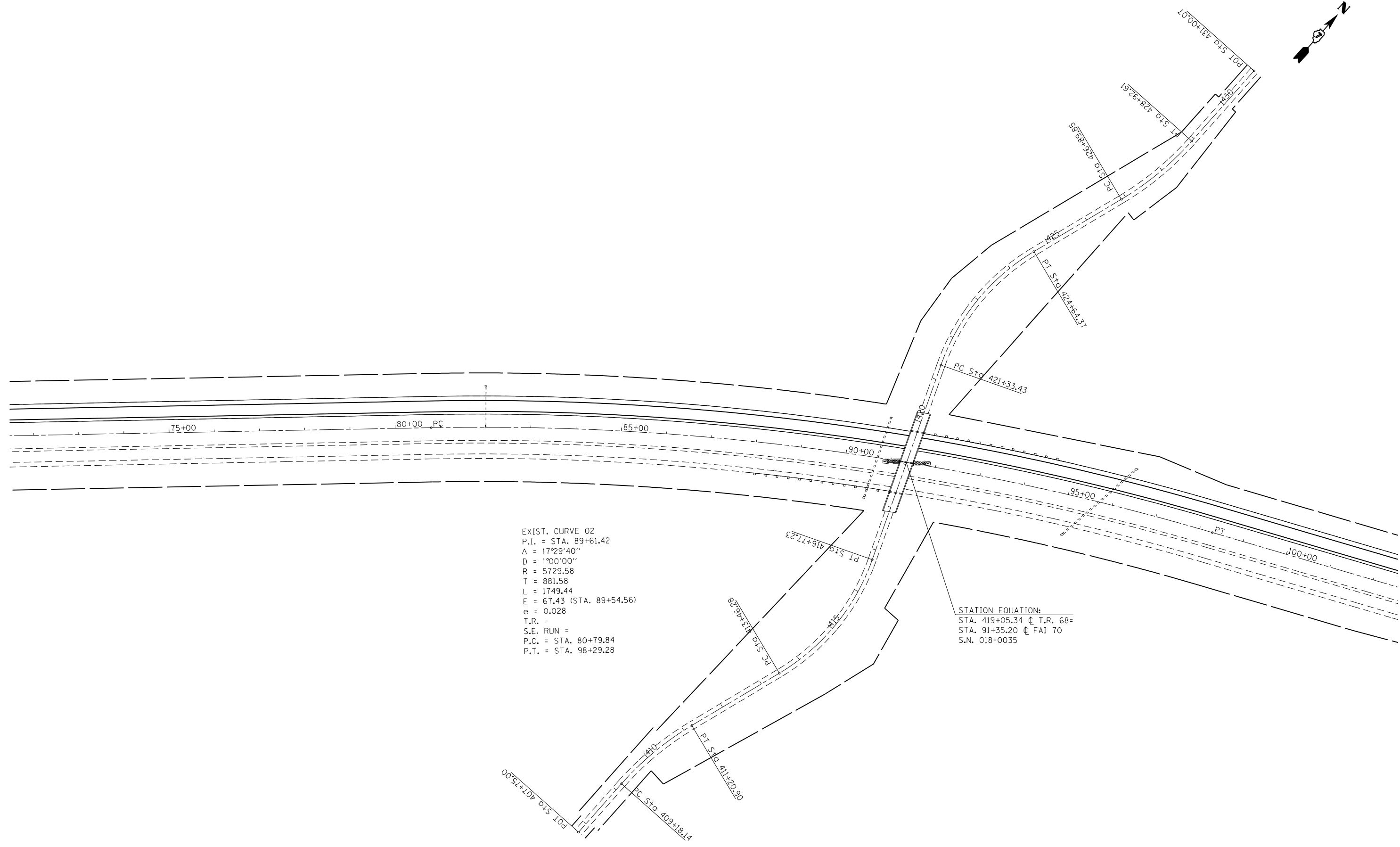
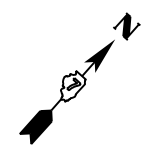
FILE NAME =	USER NAME = steffenmk	DESIGNED -	REVISED -
ct:\pw\work\p\dot\steffenmk\d0393168\074386-sh-t-plan.dgn		DRAWN -	REVISED -
	PLOT SCALE = 200.0000' / in.	CHECKED -	REVISED -
	PLOT DATE = 5/9/2014	DATE -	REVISED -

**STATE OF ILLINOIS  
DEPARTMENT OF TRANSPORTATION**

**PLAN SHEET**

SCALE: 100      SHEET NO. 3 OF 5 SHEETS      STA. 42+00 TO STA. 72+00

F.A.I RTE.	SECTION	COUNTY	TOTAL SHEETS	SHEET NO.
70	(18-45)RS-4	CUMBERLAND	17	13
CONTRACT NO. 74386			ILLINOIS FED. AID PROJECT	



EXIST. CURVE 02  
 P.I. = STA. 89+61.42  
 $\Delta$  = 17°29'40"  
 D = 1°00'00"  
 R = 5729.58  
 T = 881.58  
 L = 1749.44  
 E = 67.43 (STA. 89+54.56)  
 e = 0.028  
 T.R. =  
 S.E. RUN =  
 P.C. = STA. 80+79.84  
 P.T. = STA. 98+29.28

STATION EQUATION:  
 STA. 419+05.34 @ T.R. 68=  
 STA. 91+35.20 @ FAI 70  
 S.N. 018-0035

FILE NAME =	USER NAME = steffenmk	DESIGNED -	REVISED -
c:\pw\work\p\dot\steffenmk\d0393168\074386-sh-t-plan.dgn		DRAWN -	REVISED -
PLOT SCALE = 200.0000' / in.		CHECKED -	REVISED -
PLOT DATE = 5/9/2014		DATE -	REVISED -

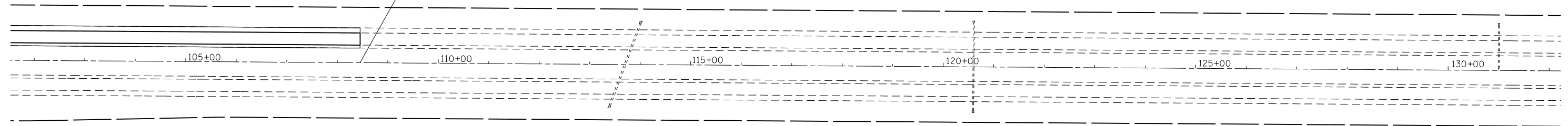
**STATE OF ILLINOIS  
 DEPARTMENT OF TRANSPORTATION**

<b>PLAN SHEET</b>	
SCALE: 100	SHEET NO. 4 OF 5 SHEETS
STA. 72+00	TO STA. 102+00

F.A.I. RTE.	SECTION	COUNTY	TOTAL SHEETS	SHEET NO.
70	(18-45)RS-4	CUMBERLAND	17	14
CONTRACT NO. 74386				
ILLINOIS FED. AID PROJECT				



FAI ROUTE 70 (I-70)  
SECTION (18-45)RS-4  
CUMBERLAND COUNTY  
PROJECT ENDS STA. 108+45.00



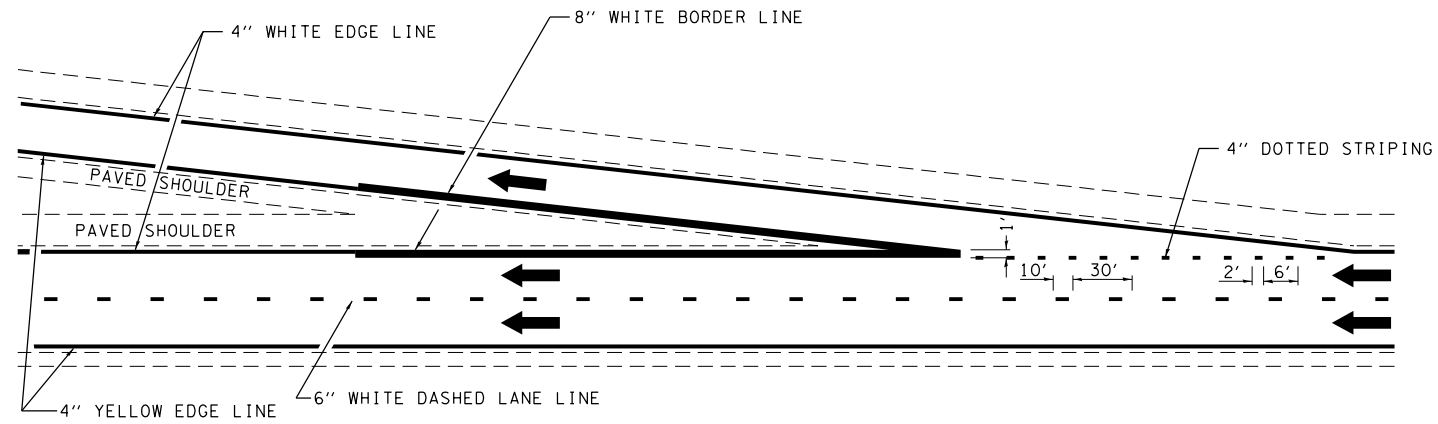
FILE NAME =	USER NAME = steffenmk	DESIGNED -	REVISED -
c:\pwork\pwork\steffenmk\d0393168\074386-sh-t-plan.dgn		DRAWN -	REVISED -
	PLOT SCALE = 200.0000' / in.	CHECKED -	REVISED -
	PLOT DATE = 5/9/2014	DATE -	REVISED -

**STATE OF ILLINOIS  
DEPARTMENT OF TRANSPORTATION**

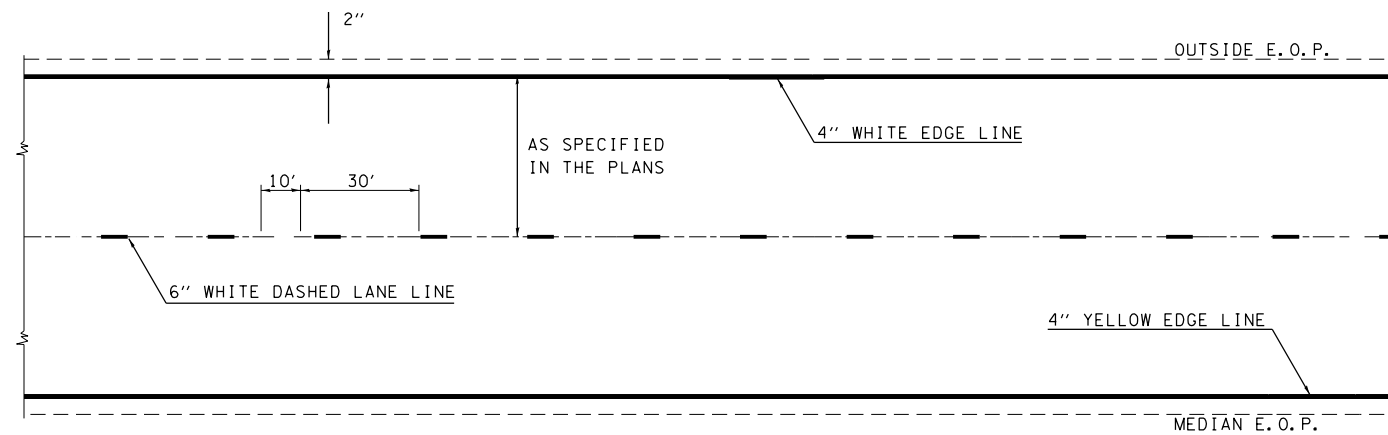
**PLAN SHEET**

SCALE: 100 SHEET NO. 5 OF 5 SHEETS STA. 102+00 TO STA. 108+45

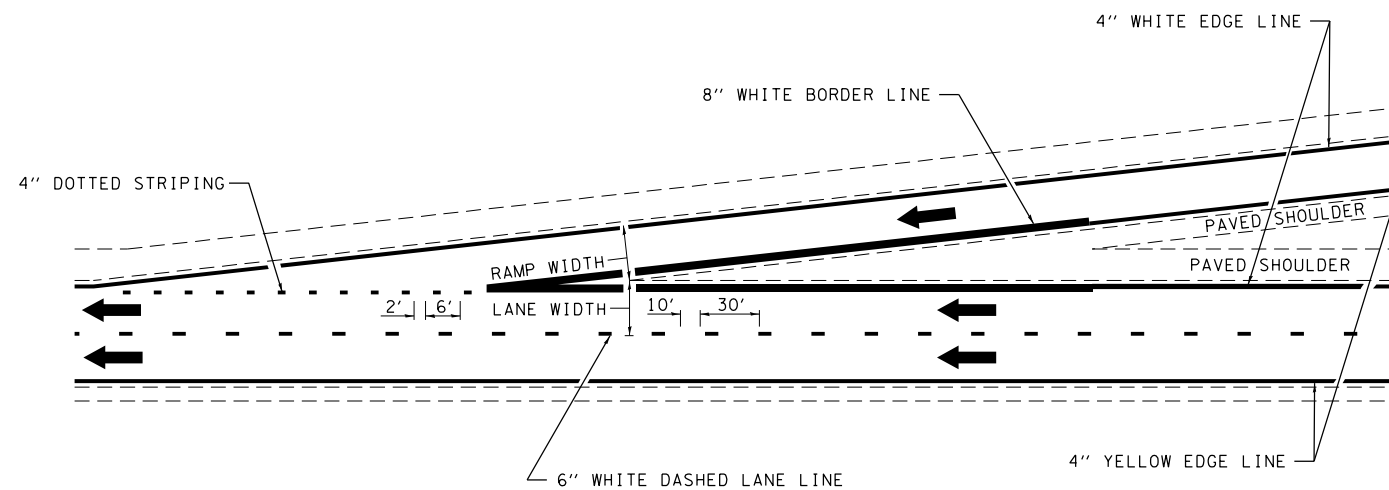
F.A.I RTE.	SECTION	COUNTY	TOTAL SHEETS	SHEET NO.
70	(18-45)RS-4	CUMBERLAND	17	15
ILLINOIS FED. AID PROJECT			CONTRACT NO. 74386	



TYPICAL EXIT RAMP MARKING



TYPICAL CENTERLINE & EDGELINE MARKINGS



TYPICAL ENTRANCE RAMP MARKING

NOT TO SCALE

**DISTRICT 7 DETAIL NO. 7800002**

FILE NAME =	USER NAME = steffenmk	DESIGNED -	REVISED - DRM 08-04
ct:\pw\work\p\dot\steffenmk\d0393168\07	74386-sh1-details.dgn	DRAWN -	REVISED - MKS 04-08
	PLOT SCALE = 100.0000' / in.	CHECKED -	REVISED - DRM 01-09
	PLOT DATE = 5/9/2014	DATE -	REVISED - DRM 12-10

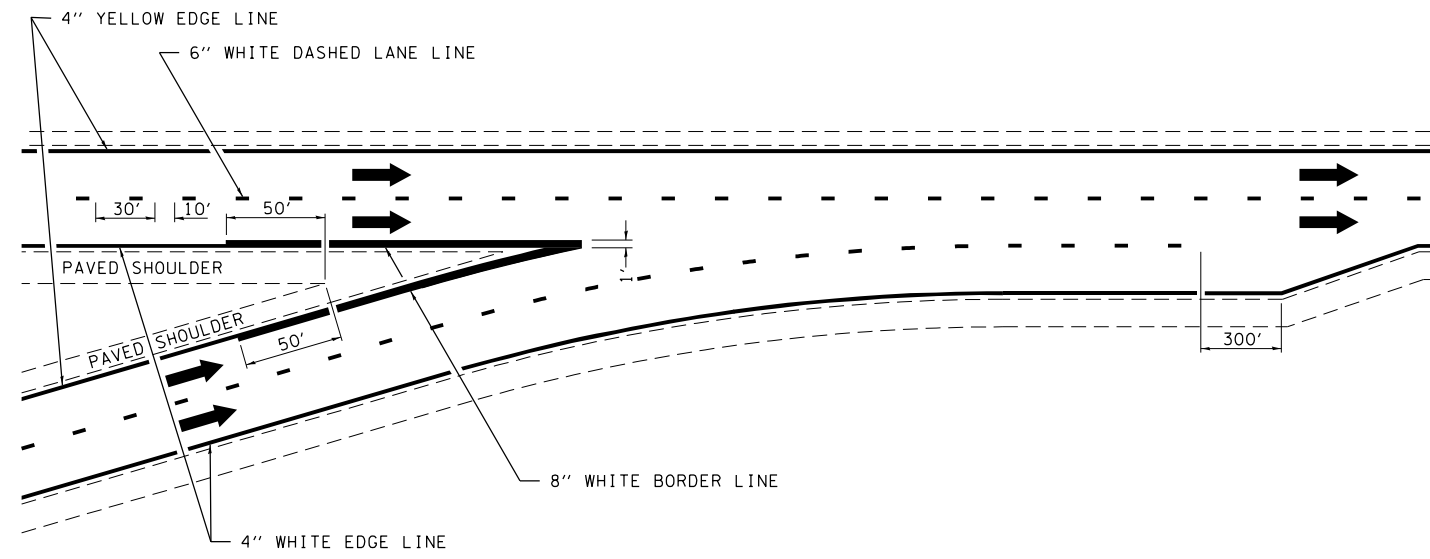
**STATE OF ILLINOIS  
DEPARTMENT OF TRANSPORTATION**

**TYPICAL APPLICATIONS OF INTERSTATE PAVEMENT MARKING**

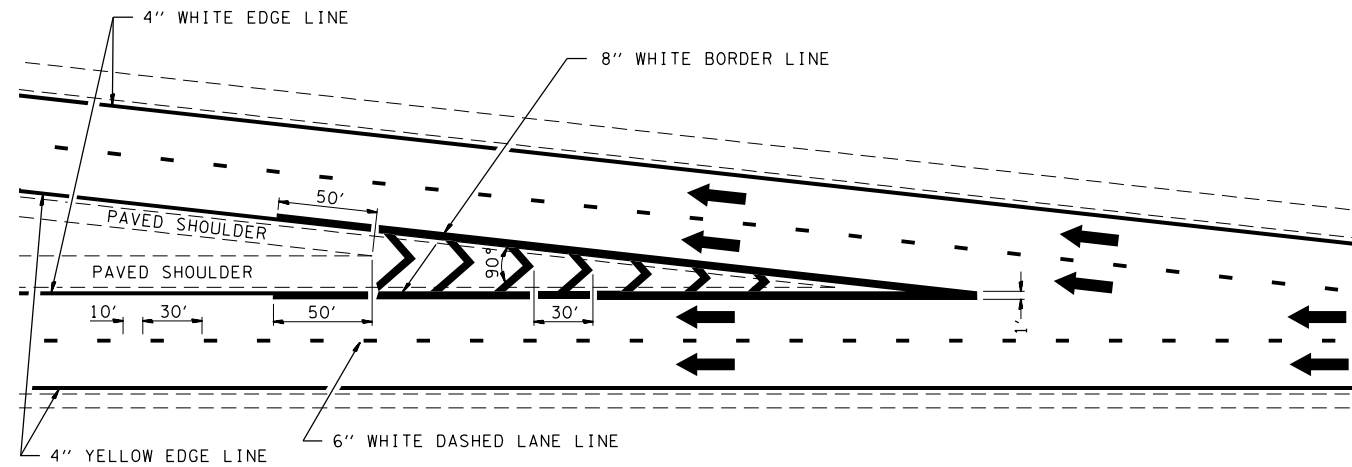
SCALE: N/A SHEET NO. 1 OF 2 SHEETS STA. TO STA.

F.A.I. RTE.	SECTION	COUNTY	TOTAL SHEETS	SHEET NO.
70	(18-45)RS-4	CUMBERLAND	17	16
CONTRACT NO. 74386				
FED. ROAD DIST. NO. ILLINOIS FED. AID PROJECT				





TYPICAL CONVERGENCE MARKING



TYPICAL DIVERGENCE MARKING

NOT TO SCALE

**DISTRICT 7 DETAIL NO. 7800002**

FILE NAME =	USER NAME = steffenmk	DESIGNED -	REVISED - MMO 12-99
ct:\pw\work\p\dot\steffenmk\d0393168\07	74386-sh1-details.dgn	DRAWN -	REVISED - DRM 08-04
	PLOT SCALE = 100.0000' / in.	CHECKED -	REVISED - MKS 04-08
	PLOT DATE = 5/9/2014	DATE -	REVISED - DRM 01-09

**STATE OF ILLINOIS  
 DEPARTMENT OF TRANSPORTATION**

**TYPICAL APPLICATIONS OF INTERSTATE PAVEMENT MARKING**

SCALE: N/A SHEET NO. 2 OF 2 SHEETS STA. TO STA.

F.A.I. RTE.	SECTION	COUNTY	TOTAL SHEETS	SHEET NO.
70	(18-45)RS-4	CUMBERLAND	17	17
FED. ROAD DIST. NO. ILLINOIS FED. AID PROJECT			CONTRACT NO. 74386	