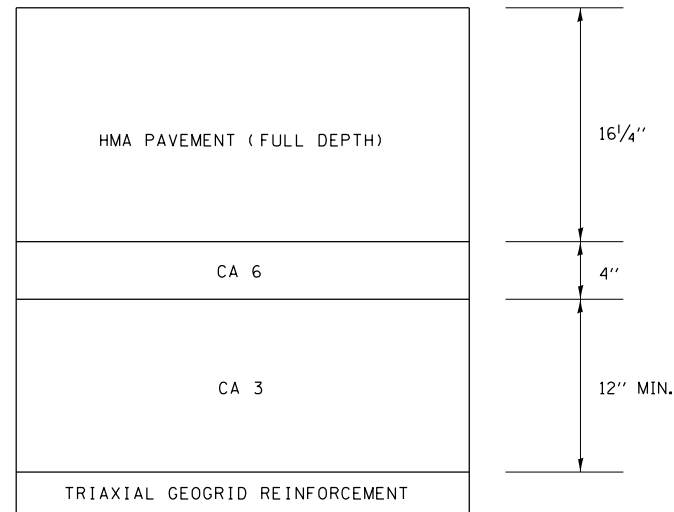


DETAIL OF SUBBASE GRANULAR MATERIAL (SPECIAL)



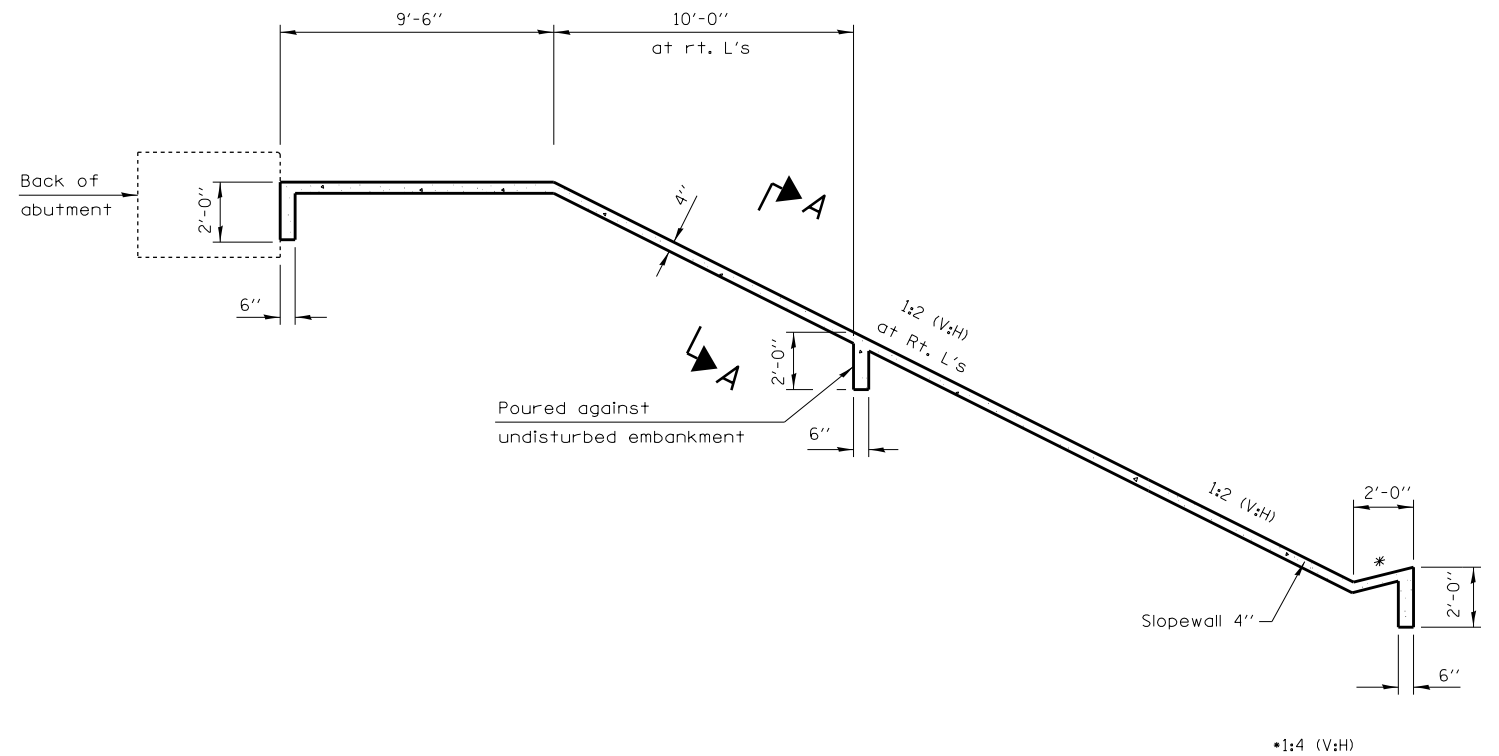
- E. B. STA. 344+62 TO STA. 352+62
- E. B. STA. 430+30 TO STA. 438+30
- E. B. STA. 525+68 TO STA. 533+68
- E. B. STA. 617+42 TO STA. 625+42
- W. B. STA. 346+38 TO STA. 351+38
- W. B. STA. 432+05 TO STA. 437+05
- W. B. STA. 525+94 TO STA. 533+94
- W. B. STA. 617+42 TO STA. 625+42

NOTES:

1. THE FIRST LIFT OF HMA BINDER COURSE SHALL BE PLACED WITHIN 4 DAYS OF THE START OF PAVEMENT REMOVAL OPERATION.
2. FOLLOWING EXCAVATION FOR THE SUBBASE AND GEOGRID, THE ENGINEER SHALL INSPECT THE SUBGRADE TO DETERMINE IF ADDITIONAL EXCAVATION IS REQUIRED TO OBTAIN A SUITABLE SUBGRADE FOR CONSTRUCTION. ADDITIONAL EXCAVATION SHALL BE PAID FOR AS EARTH EXCAVATION (SPECIAL)

SLOPE WALL EXTENSION DETAIL

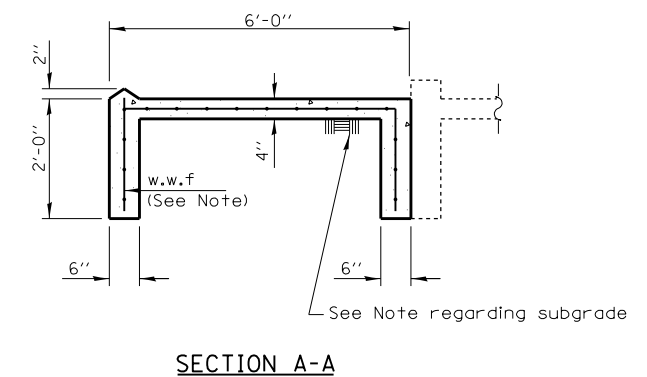
S.N. 026-0023
S.N. 026-0024



SLOPE WALL SCHEDULE

LOCATION	WIDTH FOOT	LENGTH FOOT	SLOPE WALL 4 INCH SQ YD
SN 026-0023			
East end of bridge, South Side of Slope Wall	6.0	66.5	44.3
West end of bridge, South Side of Slope Wall	6.0	66.5	44.3
SN 026-0024			
West end of bridge, South Side of Slope Wall	6.0	66.5	44.3
West end of bridge, North Side of Slope Wall	6.0	66.5	44.3
TOTAL			177.0

SECTION THRU
CONCRETE SLOPEWALL



- NOTES:
THE COST OF FURNISHING AND PLACING ANY ADDITIONAL SUBGRADE MATERIAL NECESSARY FOR GRADING BENEATH SLOPE WALL IS INCLUDED IN THE UNIT COST OF SLOPE WALL 4"
SLOPE WALL SHALL BE REINFORCED WITH WELDED WIRE FABRIC 6 IN. X 6 IN. - W4.0 X W4.0, WEIGHING 58 LBS PER 100 SQ FT.

EFFINGHAM & FAYETTE