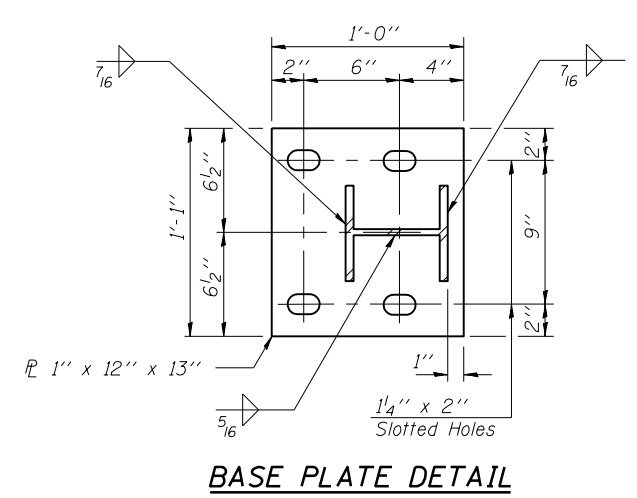
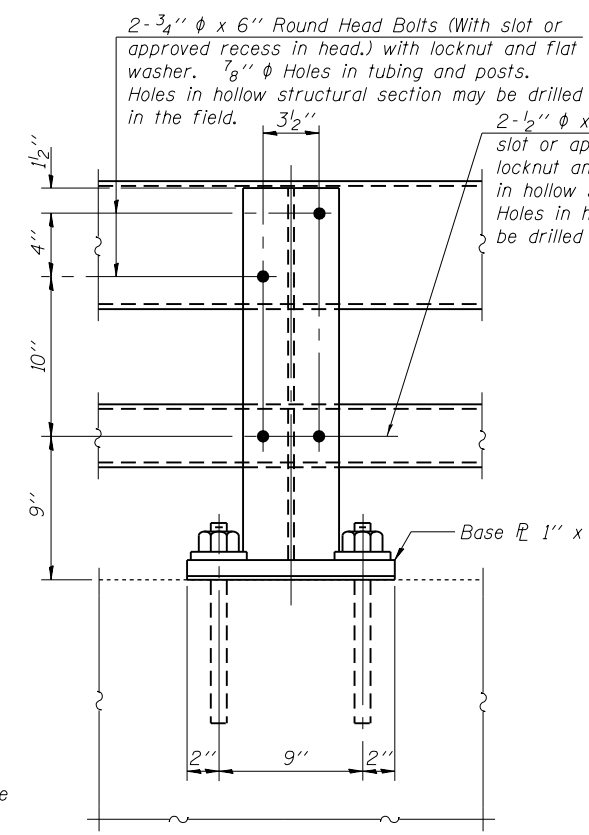


SECTION AT RAIL POST

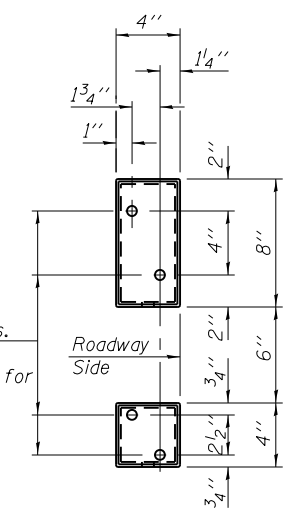


BASE PLATE DETAIL

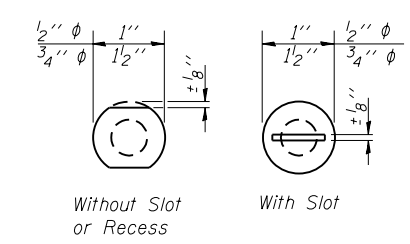


SECTION A-A

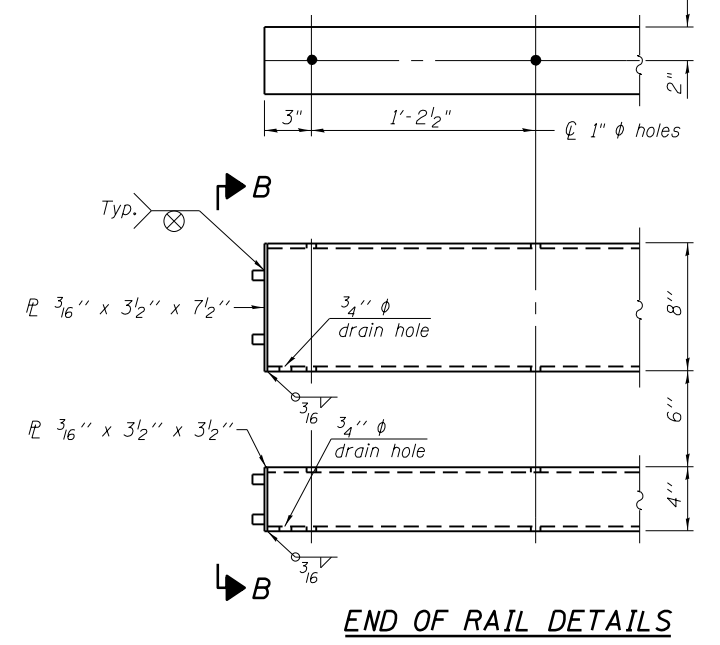
4 - 5/8" reduced base welded studs. Provide 4 - 5/8" washers and self-locking nuts or nuts and jam nuts for guardrail connection shown on Std. 631032.



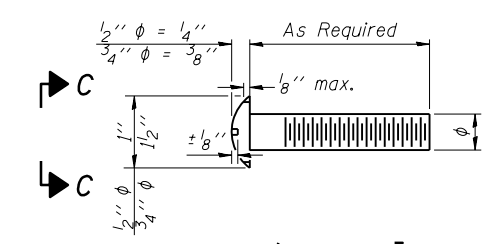
VIEW B-B



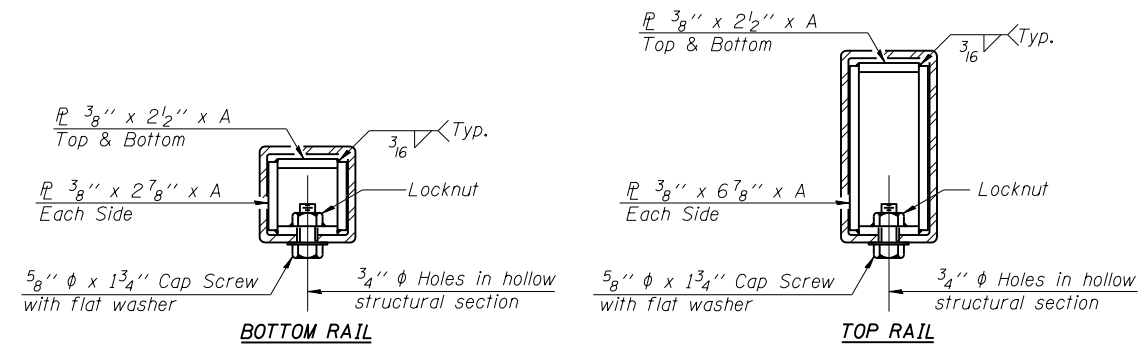
VIEW C-C



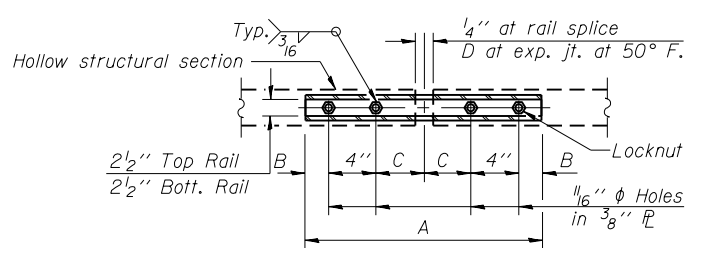
END OF RAIL DETAILS



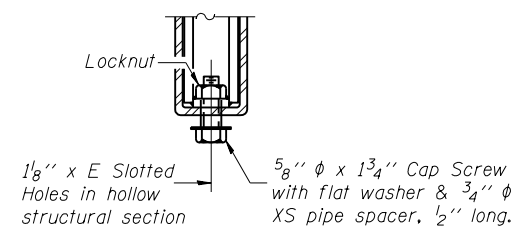
DETAIL OF 1/2" ϕ & 3/4" ϕ ROUND HEAD BOLTS



SECTIONS AT RAIL SPLICE



PLAN-BOTT. SPLICE TYPICAL



RAIL SPLICE CONNECTION AT EXPANSION JT.

Notes:

All field drilled holes shall be coated with an approved zinc rich paint before erection.

Posts shall not be located closer than 1'-3" to an existing bridge expansion joint or end of bridge.

Steel Bridge Rail expansion joint shall be provided between any two (2) posts which span a bridge expansion joint. Bolts located at expansion joint shall be provided with locknuts and shall be tightened only to a point that will allow railing movement.

Provide one 1/8" and two 1/16" steel shims for 25% of the posts. Shims shall be similar to base plates in size and holes.

All steel rail elements shall be galvanized according to Article 509.05 of the Standard Specifications.

SPLICE DIMENSIONS

T	D	A	B	C	E
≤4"	2 1/2"	1'-8"	2"	4"	2 1/2"
>4" ≤6 1/2"	3 3/4"	2'-0"	2 1/2"	5 1/2"	3 1/2"
>6 1/2" ≤9"	5"	2'-4"	3 1/2"	6 1/2"	9"
>9" ≤13"	7"	2'-10"	4 1/2"	8 1/2"	11"
Rail Splice	1/4"	1'-8"	2"	4"	—

T = Total movement at expansion joint as shown on the design plans.

BILL OF MATERIAL

Item	Unit	Quantity
Steel Railing, Type 2399	Foot	458.0

R-31

7-1-10

(6'-3" Maximum Post Spacing)

FILE NAME	USER NAME	DESIGNED	REVISED
ei:\pwork\pwork\swartzw\d0186577\077469-sht-details.dgn	swartzw	-	-
		DRAWN	REVISED
		-	-
		CHECKED	REVISED
		-	-
		DATE	REVISED
		-	-

STATE OF ILLINOIS
DEPARTMENT OF TRANSPORTATION

STEEL RAILING, TYPE 2399
STRUCTURE NO. 025-0055

SCALE: SHEET 4 OF 4 SHEETS STA. TO STA.

F.A.I. RTE.	SECTION	COUNTY	TOTAL SHEETS	SHEET NO.
70	(26-5,26-5-1,25-1-1)R		92	66

CONTRACT NO. 74469

ILLINOIS FED. AID PROJECT

EFFINGHAM & FAYETTE