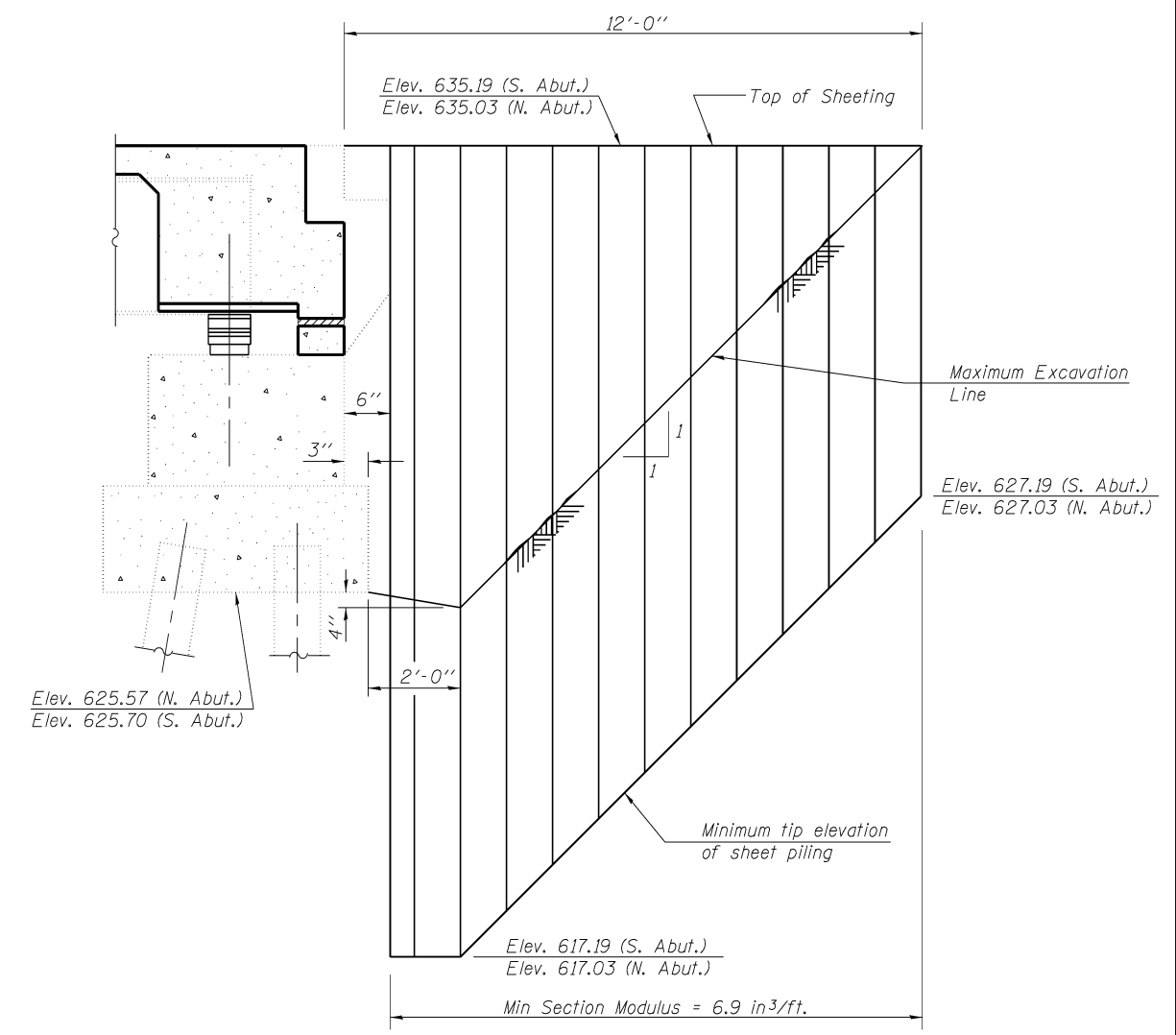


Notes:
 All cross sections are looking North.
 Hatched area indicates Removal of Existing Concrete Deck.
 For quantity of Temporary Concrete Barrier, see Roadway Plans.
 Removal of Existing Bridge Rail is included with Removal of Existing Concrete Deck.



V3 Companies of Illinois Ltd.
 7325 Janes Avenue
 Woodridge, IL 60517
 830.724.9200 phone
 830.724.9202 fax
 www.v3co.com

| | | |
|------------------------|----------------|-----------|
| USER NAME = | DESIGNED - WJV | REVISED - |
| | CHECKED - CJB | REVISED - |
| PLOT SCALE = | DRAWN - WJV | REVISED - |
| PLOT DATE = 12-22-2011 | CHECKED - CJB | REVISED - |

**STATE OF ILLINOIS
 DEPARTMENT OF TRANSPORTATION**

**STAGE CONSTRUCTION
 STRUCTURE NO. 026-0055**
 SHEET NO. 3 OF 24 SHEETS

| F.A.S. RTE. | SECTION | COUNTY | TOTAL SHEETS | SHEET NO. |
|--------------------|-----------------------|---------|--------------|-----------|
| 2720 | (26-5,26-5-1,26-1-1)R | Fayette | 92 | 70 |
| CONTRACT NO. 74469 | | | | |

ILLINOIS FED. AID PROJECT