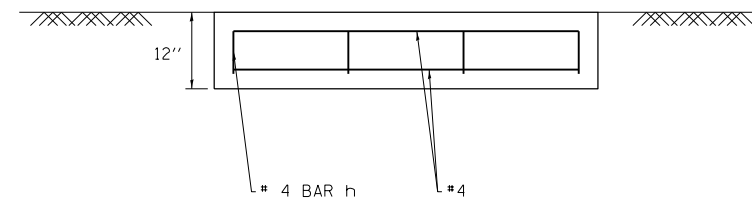
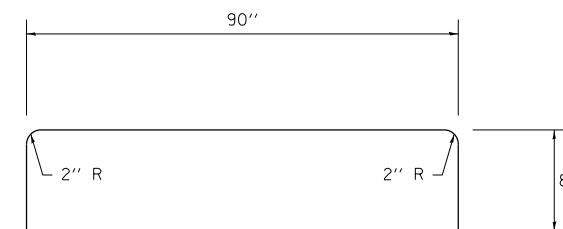


PLAN VIEW



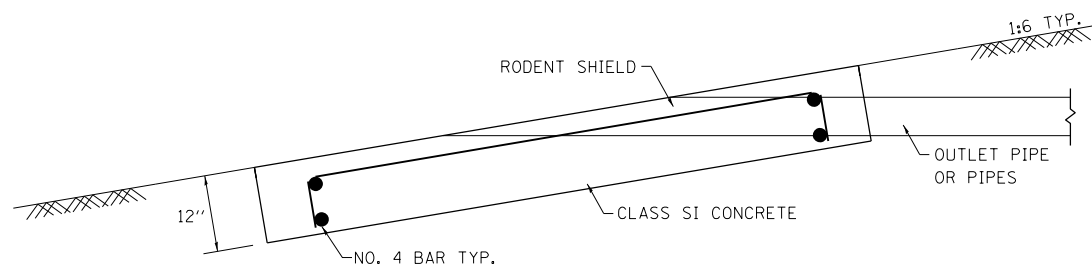
SECTION C-C



#4 h BAR

NOTES

- See Standard 601101 for details of rodent shields.
- The outlet pipe or pipes shall be located as close as possible to the center of the outlet protector.
- The last 10' of outlet pipe shall be schedule 40 PVC.
- The rebars may be cut or relocated to accommodate pipe.
- Cut outlet pipe on a bevel to match finished surface of surrounding PCC.
- Seeding Class 2 shall be considered included in the cost of the pay items.



SECTION A-A

APPROXIMATE OUTLET PROTECTOR QUANTITIES FOR EACH OUTLET PROTECTOR	
CONCRETE, CLASS SI	REINFORCING STEEL
CU YD 1.5	LB 35.6

EFFINGHAM & FAYETTE

FILE NAME =	USER NAME = swartzrw	DESIGNED -	REVISED -
ci:\pw\work\p\idot\swartzrw\d0186577\077469-sht-details.dgn		DRAWN -	REVISED -
	PLOT SCALE = 100.0000' / 1in.	CHECKED -	REVISED -
	PLOT DATE = 6/5/2014	DATE -	REVISED -

STATE OF ILLINOIS
DEPARTMENT OF TRANSPORTATION

OUTLET PROTECTOR DETAILS

SCALE: NA SHEET NO. 1 OF 1 SHEETS STA. TO STA.

F.A.I. RTE.	SECTION	COUNTY	TOTAL SHEETS	SHEET NO.
70	(26-5,26-5-1,25-1-1)R		92	92
CONTRACT NO. 74469				
ILLINOIS FED. AID PROJECT				