

SEE SHEET 6 FOR
 TOTAL HOLDING

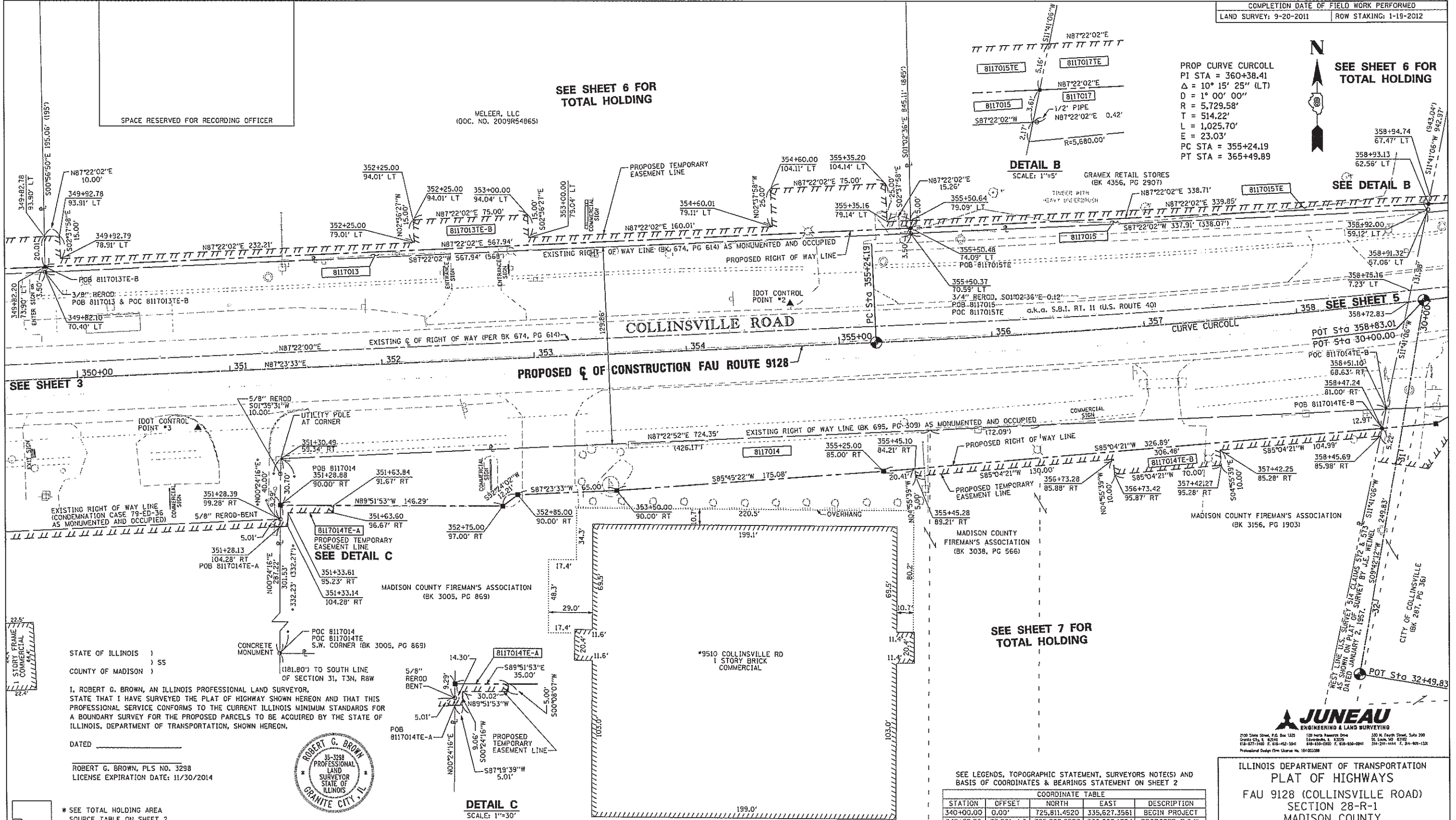
PROP CURVE CURCOLL
 PI STA = 360+38.41
 $\Delta = 10^\circ 15' 25''$ (LT)
 $D = 1^\circ 00' 00''$
 $R = 5,729.58'$
 $T = 514.22'$
 $L = 1,025.70'$
 $E = 23.03'$
 PC STA = 355+24.19
 PT STA = 365+49.89



SEE SHEET 6 FOR
 TOTAL HOLDING

DETAIL B
 SCALE: 1"=5'

SEE DETAIL B



SEE SHEET 3

SEE SHEET 5

SEE SHEET 7 FOR
 TOTAL HOLDING

STATE OF ILLINOIS)
 COUNTY OF MADISON) SS

I, ROBERT G. BROWN, AN ILLINOIS PROFESSIONAL LAND SURVEYOR,
 STATE THAT I HAVE SURVEYED THE PLAT OF HIGHWAY SHOWN HEREON AND THAT THIS
 PROFESSIONAL SERVICE CONFORMS TO THE CURRENT ILLINOIS MINIMUM STANDARDS FOR
 A BOUNDARY SURVEY FOR THE PROPOSED PARCELS TO BE ACQUIRED BY THE STATE OF
 ILLINOIS, DEPARTMENT OF TRANSPORTATION, SHOWN HEREON.

DATED _____

ROBERT G. BROWN, PLS NO. 3298
 LICENSE EXPIRATION DATE: 11/30/2014



DETAIL C
 SCALE: 1"=30'

SEE LEGENDS, TOPOGRAPHIC STATEMENT, SURVEYORS NOTE(S) AND
 BASIS OF COORDINATES & BEARINGS STATEMENT ON SHEET 2

COORDINATE TABLE				
STATION	OFFSET	NORTH	EAST	DESCRIPTION
340+00.00	0.00'	725,811.4520	335,627.3561	BEGIN PROJECT
349+82.20	73.90' LT	725,929.9597	336,605.1764	PROPOSED R.O.W.
350+77.19	36.60' RT	725,823.8934	336,705.0918	CONTROL POINT 3
351+28.88	90.00' RT	725,772.9012	336,759.1614	PROPOSED R.O.W.
352+75.00	97.00' RT	725,772.5559	336,905.4489	PROPOSED R.O.W.
352+85.00	90.00' RT	725,780.0035	336,915.1201	PROPOSED R.O.W.
353+50.00	90.00' RT	725,782.9606	336,980.0528	PROPOSED R.O.W.
354+69.28	28.13' LT	725,906.3983	337,093.8349	CONTROL POINT 2
355+24.19	0.00'	725,880.7918	337,149.9681	P.C. MAINLINE
355+25.00	85.00' RT	725,795.9173	337,154.6561	PROPOSED R.O.W.
355+50.48	74.09' LT	725,956.0490	337,172.5159	PROPOSED R.O.W.
358+47.24	81.00' RT	725,823.9962	337,480.3393	PROPOSED R.O.W.
358+83.01	0.00'	725,908.3258	337,507.6758	P.O.T. MAINLINE
358+93.13	62.56' LT	725,971.6082	337,510.8678	PROPOSED R.O.W.
360+38.41	0.00'	725,904.1853	337,663.6585	P.I. MAINLINE
365+49.89	0.00'	726,018.6743	338,164.9742	P.T. MAINLINE

ILLINOIS DEPARTMENT OF TRANSPORTATION
 PLAT OF HIGHWAYS
 FAU 9128 (COLLINSVILLE ROAD)
 SECTION 28-R-1
 MADISON COUNTY
 JOB NO. R-98-017-11
 STATION 349+70 TO STATION 358+95



ILLINOIS DEPARTMENT OF TRANSPORTATION
 DIVISION OF HIGHWAYS/REGION 5/DISTRICT B
 1102 EASTPORT PLAZA DRIVE
 COLLINSVILLE, ILLINOIS 62234-6198

F.A.U. RTE.	SECTION	COUNTY	TOTAL SHEET NO.
9128	28-R-1	MADISON	6440A

CONTRACT NO. 76F11

PARCEL NO.	OWNER	FEE SIMPLE ACQUISITION		REMAINDER	EASEMENTS		PERMANENT TAX NUMBER	PROPERTY ACQUIRED BY
		TOTAL HOLDING ACRES	GROSS ACRES		FE = PERMANENT ACRES	TE = TEMPORARY ACRES		
8117013	Meleer, LLC, an Illinois Limited Liability Company 18-2010MA-4431.0 Doc No 2009R54865	13.7220	0.0456	1,988	13.6764	TE-A=0.0023 TE-B=0.1376	13-1-21-31-00-000-009	
8117014	Madison County Firemen's Association Bk 3005, Pg 869 Bk 3038, Pg 566 Bk 3156, Pg 1903	5.3581	0.4252	18,522	4.9329	TE-A=0.0051 TE-B=0.0512	13-1-21-31-00-000-011.001 13-1-21-31-00-000-012	
8117015	Gramex Retail Stores, Inc., a Delaware Corporation 18-2010MA-4432.0 Bk 4356, Pg 2907	10.4507	0.0272	1,184	10.4235	TE=0.0389 TE=1.696	13-1-21-31-00-000-008	