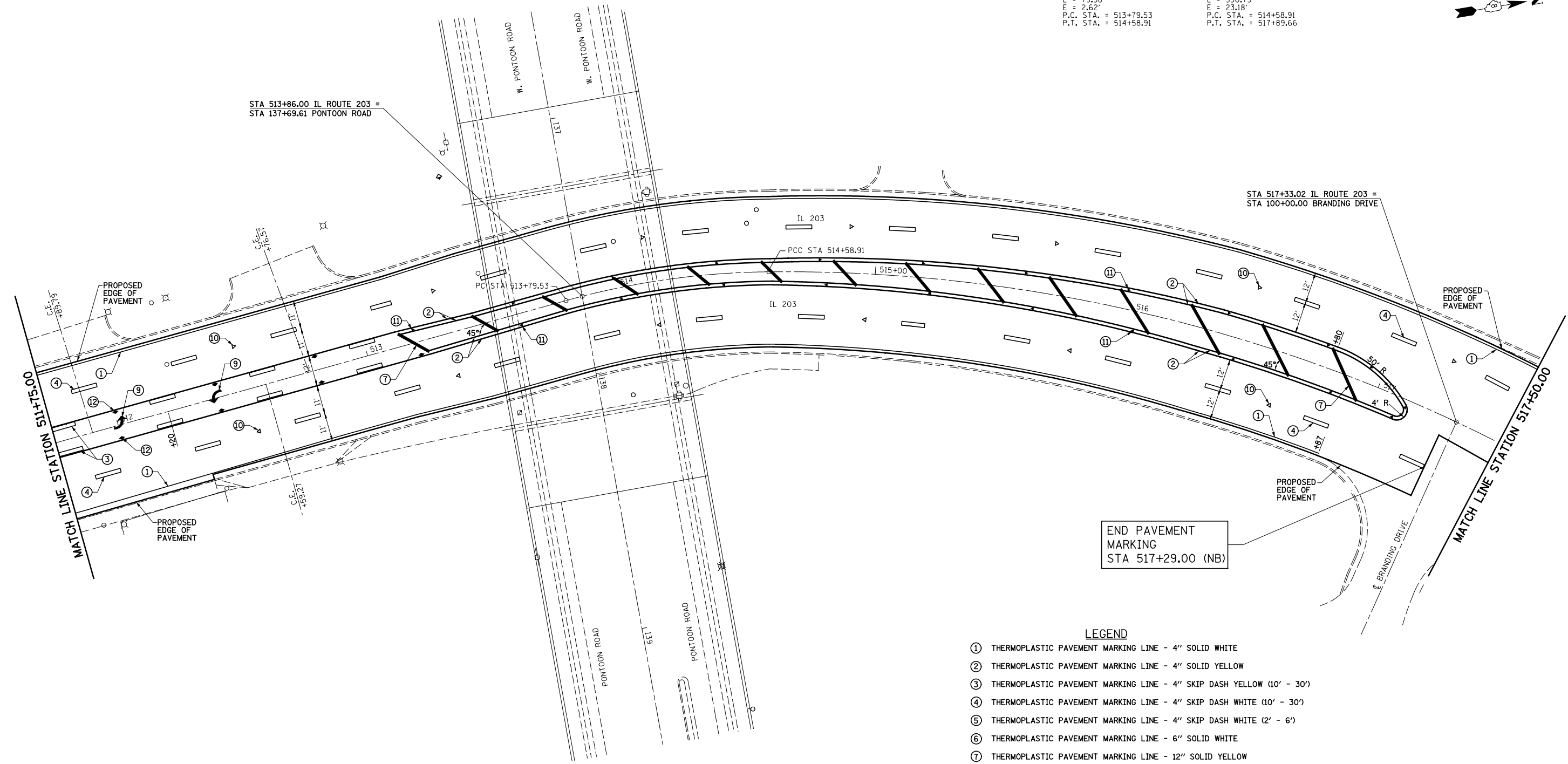
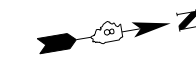


EXIST. CURVE F-3
 PI STA. = 514+19.45
 $\Delta = 15^\circ 00' 20''$ (RT)
 $D = 18^\circ 54' 12''$
 $R = 303.10'$
 $T = 39.92'$
 $L = 79.38'$
 $E = 2.62'$
 P.C. STA. = 513+79.53
 P.T. STA. = 514+58.91

EXIST. CURVE F-4
 PI STA. = 516+28.48
 $\Delta = 31^\circ 08' 14''$ (RT)
 $D = 9^\circ 24' 51''$
 $R = 608.61'$
 $T = 169.57'$
 $L = 330.75'$
 $E = 23.18'$
 P.C. STA. = 514+58.91
 P.T. STA. = 517+89.66



END PAVEMENT MARKING
 STA 517+29.00 (NB)

LEGEND

- ① THERMOPLASTIC PAVEMENT MARKING LINE - 4" SOLID WHITE
- ② THERMOPLASTIC PAVEMENT MARKING LINE - 4" SOLID YELLOW
- ③ THERMOPLASTIC PAVEMENT MARKING LINE - 4" SKIP DASH YELLOW (10' - 30')
- ④ THERMOPLASTIC PAVEMENT MARKING LINE - 4" SKIP DASH WHITE (10' - 30')
- ⑤ THERMOPLASTIC PAVEMENT MARKING LINE - 4" SKIP DASH WHITE (2' - 6')
- ⑥ THERMOPLASTIC PAVEMENT MARKING LINE - 6" SOLID WHITE
- ⑦ THERMOPLASTIC PAVEMENT MARKING LINE - 12" SOLID YELLOW
- ⑧ THERMOPLASTIC PAVEMENT MARKING LINE - 12" SOLID WHITE
- ⑨ THERMOPLASTIC PAVEMENT MARKING - LETTERS AND SYMBOLS
- ⑩ RAISED REFLECTIVE PAVEMENT MARKERS - CRYSTAL, ONE-WAY
- ⑪ RAISED REFLECTIVE PAVEMENT MARKERS - AMBER, ONE-WAY
- ⑫ RAISED REFLECTIVE PAVEMENT MARKERS - AMBER, TWO-WAY
- ⑬ PAVEMENT MARKING REMOVAL
- ⑭ PAINT PAVEMENT MARKING CURB (NOSE)
- ⑮ PAINT PAVEMENT MARKING CURB (MEDIAN STRIPING)
- ⑯ PRISMATIC CURB REFLECTOR



FILE NAME = #FILEL\$	USER NAME = betsy	DESIGNED - ESW	REVISED - 5-30-14	STATE OF ILLINOIS DEPARTMENT OF TRANSPORTATION	PAVEMENT MARKING DETAILS			F.A.P. RTE. = 594	SECTION = (X-3,X-2)RS-1	COUNTY = MADISON	TOTAL SHEETS = 52	SHEET NO. = 39
	PLOT SCALE = 48.000' / in.	CHECKED - JWS	REVISED -		SCALE: 1"=20'	SHEET NO. 10 OF 11 SHEETS	STA. 511+75.00 TO STA. 517+50.00	CONTRACT NO. 76G24				
PLOT DATE = 6/5/2014	DATE = 3-17-14	REVISED -	REVISED -		ILLINOIS FED. AID PROJECT							