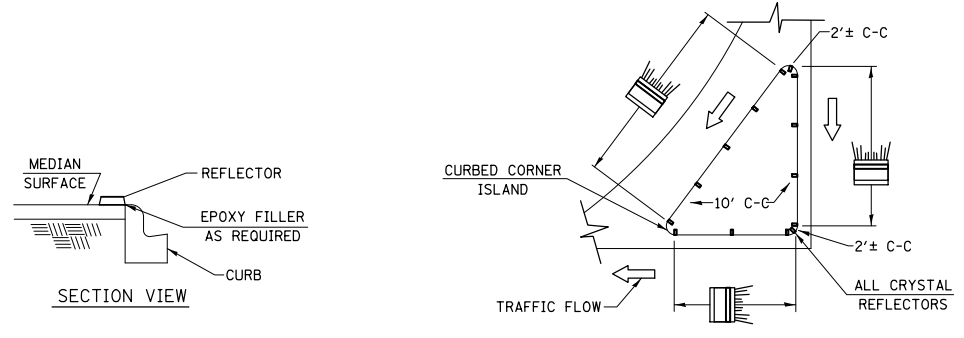
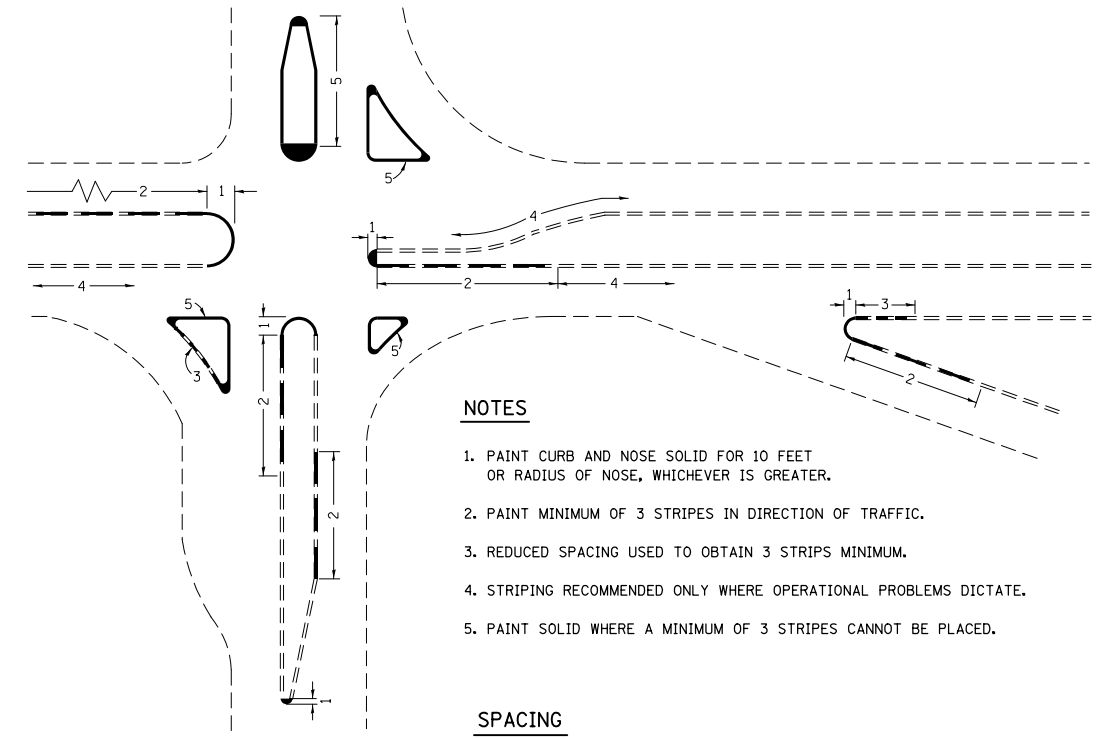


- NOTES**
1. PRISMATIC REFLECTORS SHALL BE MONO-DIRECTIONAL AND POSITIONED SO THAT THE REFLECTIVE FACE IS FACING THE APPROACHING TRAFFIC.
 2. PRISMATIC REFLECTORS SHALL BE SECURED IN PLACE WITH AN EPOXY ADHESIVE.
 3. PRISMATIC REFLECTORS SHALL BE EITHER AMBER OR CRYSTAL IN COLOR.



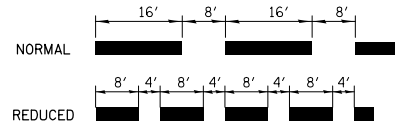
TYPICAL PLACEMENT OF PRISMATIC REFLECTORS ON CURBS
(NO SCALE)



NOTES

1. PAINT CURB AND NOSE SOLID FOR 10 FEET OR RADIUS OF NOSE, WHICHEVER IS GREATER.
2. PAINT MINIMUM OF 3 STRIPES IN DIRECTION OF TRAFFIC.
3. REDUCED SPACING USED TO OBTAIN 3 STRIPS MINIMUM.
4. STRIPING RECOMMENDED ONLY WHERE OPERATIONAL PROBLEMS DICTATE.
5. PAINT SOLID WHERE A MINIMUM OF 3 STRIPES CANNOT BE PLACED.

SPACING



CURB MARKING

FILE NAME =	USER NAME = conoverpj	DESIGNED -	REVISED -
et:\pwork\pwork\conoverpj\d0374170\d8	6g93-shd-details.dgn	DRAWN -	REVISED -
	PLOT SCALE = 100.0000' / 1in.	CHECKED -	REVISED -
	PLOT DATE = 5/7/2014	DATE -	REVISED -

**STATE OF ILLINOIS
DEPARTMENT OF TRANSPORTATION**

**PRISMATIC CURB REFLECTORS
& CURB PAINTING**

SCALE: SHEET NO. 1 OF 1 SHEETS STA. TO STA.

*FAP 805/FAS 795				
F.A. RTE.	SECTION	COUNTY	TOTAL SHEETS	SHEET NO.
•	(61-1-1,101,102)RS-1	MARION	25	25
			CONTRACT NO. 76G93	
FED. ROAD DIST. NO.	ILLINOIS	FED. AID PROJECT		