

STATE OF ILLINOIS
DEPARTMENT OF TRANSPORTATION
DIVISION OF HIGHWAYS

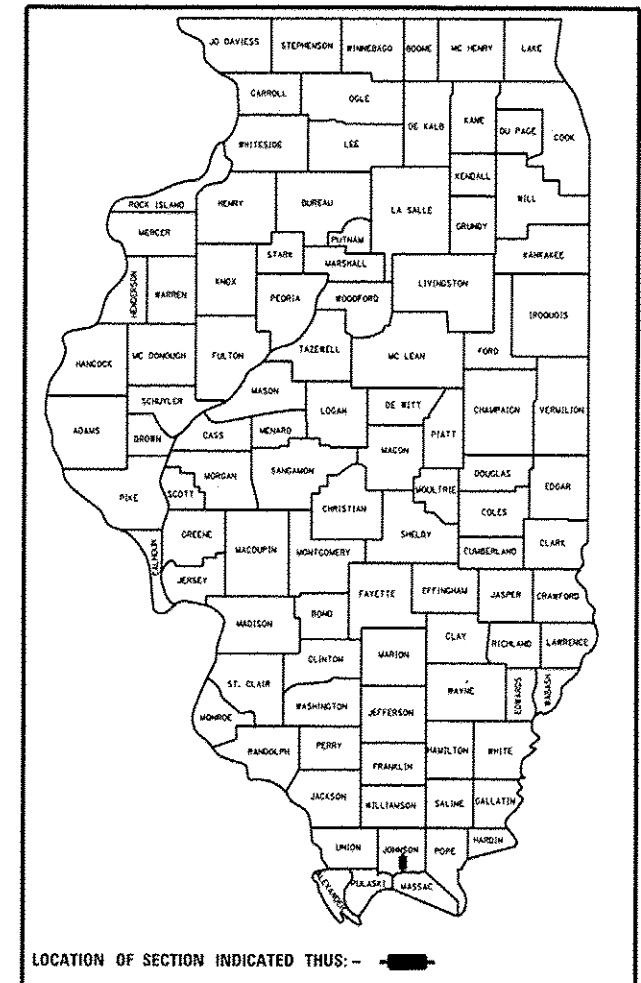
**PROPOSED
HIGHWAY PLANS**

ROUTE FAS 960 (US 45)
SECTION 38RS-5

RESURFACING 3P
JOHNSON COUNTY
C-99-058-11

F.A.S. RTE.	SECTION	COUNTY	TOTAL SHEETS	SHEET NO.
960	38RS-5	JOHNSON	26	1
		ILLINOIS	CONTRACT NO. 78270	

D-99-047-11



FOR INDEX OF SHEETS, SEE SHEET NO. 3

US 45 (FAS 960)
TRAFFIC DATA

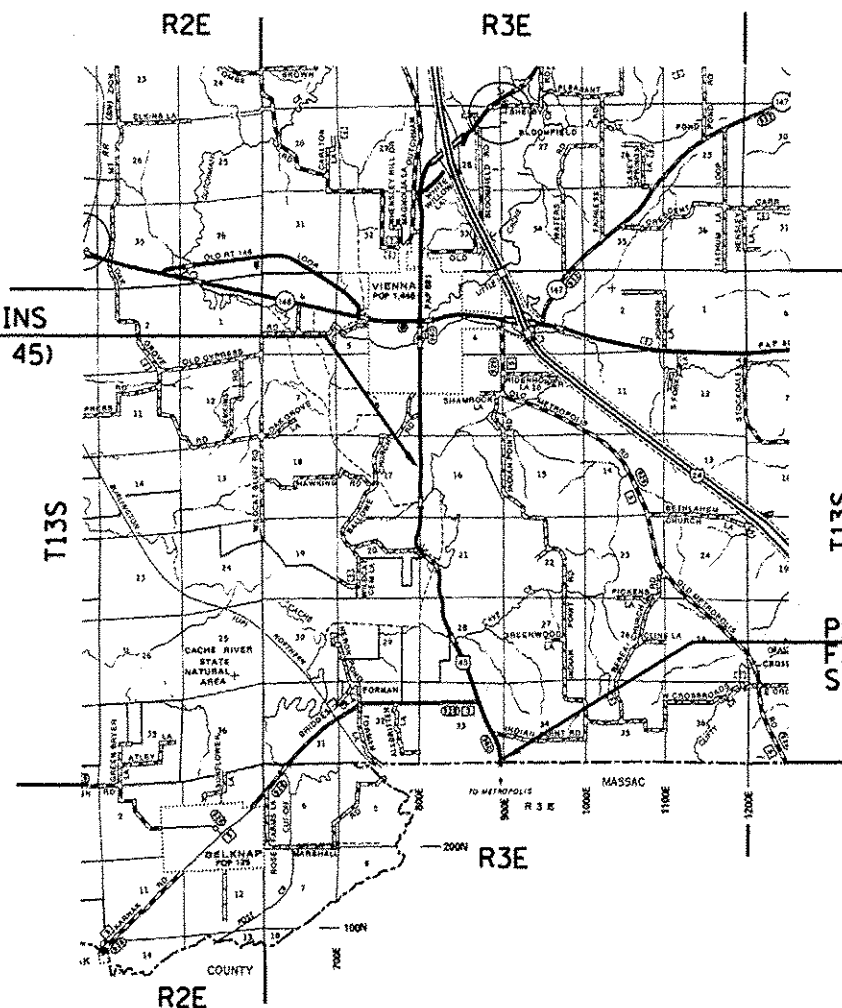
	(2014)	(2034)
PV =	2,040	2,750
MU =	70	95
SU =	70	95
ADT =	2,180	2,940

EQUATION STATION:
EQ. STA. 192+13.0 (BK) = STA. 191+07.6 (AH)
EQ. STA. 198+02.0 (BK) = STA. 197+99.8 (AH)

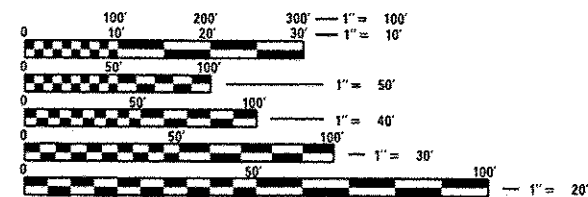
OMISSION STATIONS:
STA. 114+74 TO 117+46 (OMISSION)
STA. 163+11.41 TO 165+57.40 (OMISSION)
STA. 213+36 TO 213+94 (OMISSION)

TOWNSHIP
VIENNA
T.13S-R.3E

PROJECT BEGINS
FAS 960 (US 45)
STA. 91+86



PROJECT ENDS
FAS 960 (US 45)
STA. 302+33



FULL SIZE PLANS HAVE BEEN PREPARED USING STANDARD ENGINEERING SCALES. REDUCED SIZED PLANS WILL NOT CONFORM TO STANDARD SCALES. IN MAKING MEASUREMENTS ON REDUCED PLANS, THE ABOVE SCALES MAY BE USED.

J.U.L.I.E.
JOINT UTILITY LOCATION INFORMATION FOR EXCAVATION
1-800-892-0123
OR 811

PROJECT ENGINEER: CHARLES STEIN 618-351-5210
PROJECT MANAGER: JOHN BRANDON 618-351-5291

CONTRACT NO. 78270

GROSS LENGTH = 21,155 FT. = 4.00 MILE
OMISSIONS = 576 FT = 0.11 MILE
NET LENGTH = 20,520 FT. = 3.89 MILE (See gen. notes for station discrepancy)

STATE OF ILLINOIS
DEPARTMENT OF TRANSPORTATION
DIVISION OF HIGHWAYS

SUBMITTED June 4 20 14

Jeffrey J. [Signature]
DEPUTY DIRECTOR OF HIGHWAYS, REGION ENGINEER

June 27 20 14
John D. Baranzelli, PE, [Signature]
acting ENGINEER OF DESIGN AND ENVIRONMENT

June 27 20 14
Omer Osman, PE, [Signature]
DIRECTOR OF HIGHWAYS, CHIEF ENGINEER

**PRINTED BY THE AUTHORITY
OF THE STATE OF ILLINOIS**