

STATE OF ILLINOIS  
DEPARTMENT OF TRANSPORTATION  
DIVISION OF HIGHWAYS

**PROPOSED  
PLANS FOR SAFE ROUTE  
TO SCHOOLS IMPROVEMENTS**

VILLAGE OF ROANOKE  
CHURCH ST., HIGH ST., AND FRANKLIN ST.  
FEDERAL PROJECT NO. SRTS-4009(265)  
JOB NO. C-94-006-14  
SECTION 12-00012-00-SW  
WOODFORD COUNTY

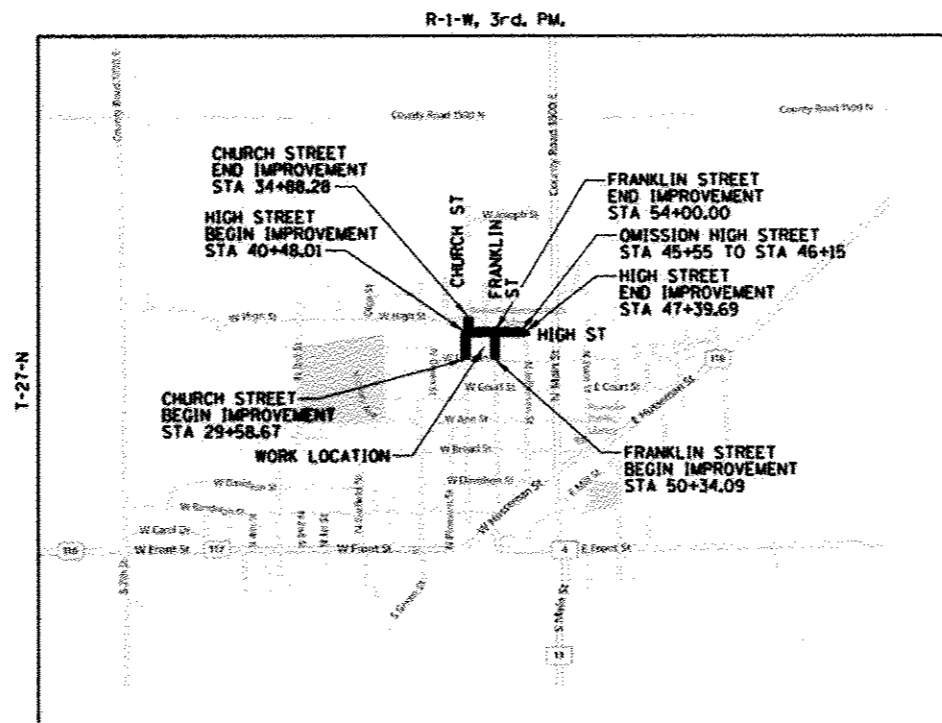
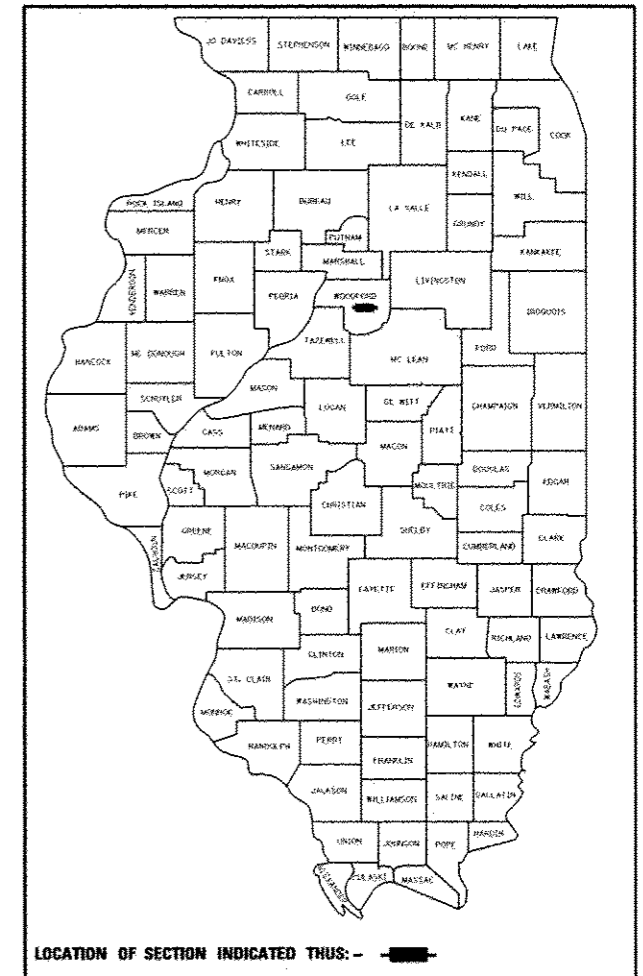
F.A.U. RTE.	SECTION	COUNTY	TOTAL SHEETS	SHEET NO.
	12-00012-00-SW	WOODFORD	9	1
		ILLINOIS	CONTRACT NO. 89648	

**INDEX OF SHEETS**

- 1 COVER SHEET
- 2 CONTROL TIES & BENCHMARKS
- 3 SUMMARY AND SCHEDULE OF QUANTITIES
- 4 TYPICAL SECTIONS AND GENERAL NOTES
- 5 PLAN SHEET - CHURCH STREET
- 6 PLAN SHEET - HIGH STREET
- 7 PLAN SHEET - FRANKLIN STREET
- 8 INTERSECTION DETAILS
- 9 MISCELLANEOUS DETAILS

**HIGHWAY STANDARDS**

- |           |  |
|-----------|--|
| 000001-06 | DECIMAL OF AN INCH AND A FOOT                      |
| 280001-07 | TEMPORARY EROSION CONTROL SYSTEMS                  |
| 424001-07 | PERPENDICULAR CURB RAMPS FOR SIDEWALKS             |
| 424006-01 | CORNER PARALLEL CURB RAMPS FOR SIDEWALKS           |
| 424011-01 | MID-BLOCK CURB RAMPS FOR SIDEWALKS                 |
| 606001-05 | COMB. CURB TYPE B & COMB. CONCRETE CURB AND GUTTER |
| 701301-04 | LANE CLOSURE, 2L, 2W SHORT TIME OPERATIONS         |
| 701501-06 | URBAN LANE CLOSURE, 2L, 2W, UNDIVIDED              |
| 701801-05 | SIDEWALK, CORNER OR CROSSWALK CLOSURE              |
| 701901-03 | TRAFFIC CONTROL DEVICES                            |



**LOCATION MAP**

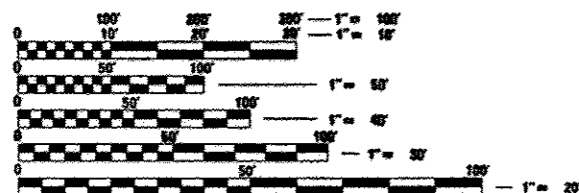
**VILLAGE OF ROANOKE, ILLINOIS**

CHURCH STREET GROSS & NET LENGTH  
PROPOSED IMPROVEMENTS = 530.00 FT = 0.100 MILE

FRANKLIN STREET GROSS & NET LENGTH  
PROPOSED IMPROVEMENTS = 366.00 FT = 0.069 MILE

HIGH STREET GROSS & NET LENGTH  
PROPOSED IMPROVEMENTS = 740.00 FT = 0.140 MILE

PROPOSED IMPROVEMENTS  
TOTAL GROSS = 1636.00 FT = 0.310 MILE  
TOTAL NET = 1576.00 FT = 0.298 MILE

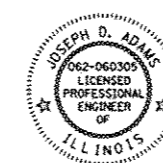


FULL SIZE PLANS HAVE BEEN PREPARED USING STANDARD ENGINEERING SCALES. REDUCED SIZED PLANS WILL NOT CONFORM TO STANDARD SCALES. IN MAKING MEASUREMENTS ON REDUCED PLANS, THE ABOVE SCALES MAY BE USED.

J.U.L.I.E.  
JOINT UTILITY LOCATION INFORMATION FOR EXCAVATION  
1-800-892-0123  
OR 811

PROJECT ENGINEER: JOE ADAMS  
PROJECT MANAGER: ERIC BACHMAN  
CATALOG NO. 034978-00  
CONTRACT NO. 89648

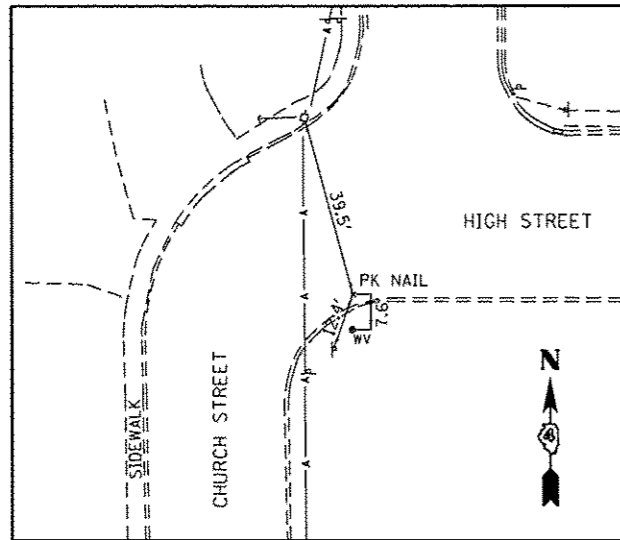
**Farnsworth**  
GROUP, INC.  
7707 North Knoxville Avenue, Suite 100  
Peoria, Illinois 61614  
309/689-9888, 309/689-9820 fax



SIGNATURE: [Signature]  
EXPIRATION DATE NOVEMBER 30, 2015

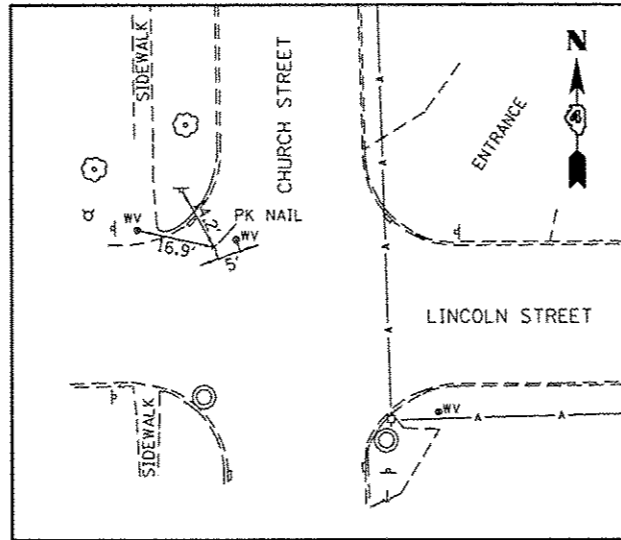
ILLINOIS DEPARTMENT OF TRANSPORTATION	
Approved	<i>Robert F. Isaia</i> 5/5/14 Village of Roanoke, Village President
Passed	<i>05/12/14</i> <i>[Signature]</i> District #4 Engineer of Local Roads & Streets
Releasing for Bid Based on Limited Review	<i>05/12/14</i> <i>[Signature]</i> Deputy Director of Highways, Region #3 Engineer

**PRINTED BY THE AUTHORITY  
OF THE STATE OF ILLINOIS**



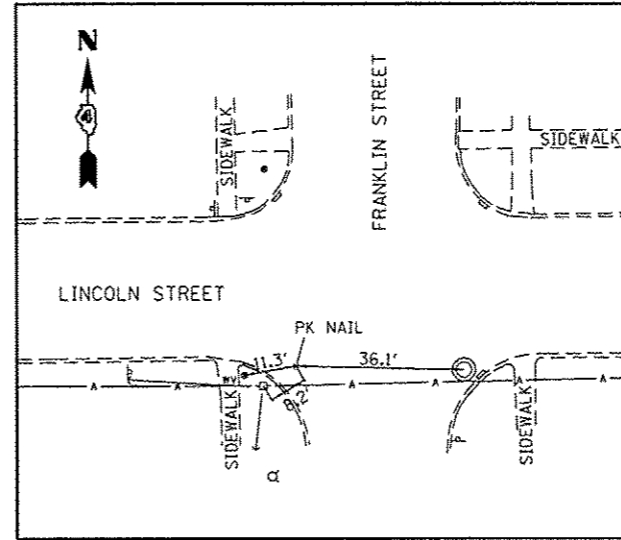
**CONTROL TIE**

PK NAIL  
 STA 40+29.93 / 16.52' RT  
 ELEV=125.87  
 N 102861.083  
 E 100136.844



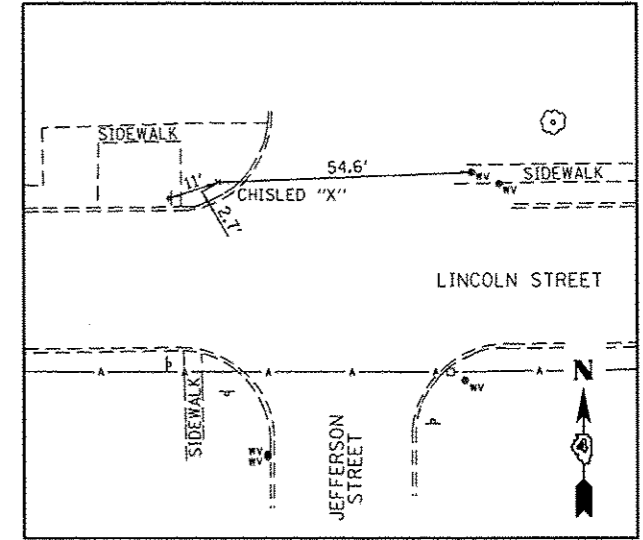
**CONTROL TIE**

PK NAIL  
 STA 30+14.25 / 16.75' LT  
 ELEV=120.04  
 N 102562.796  
 E 100094.370



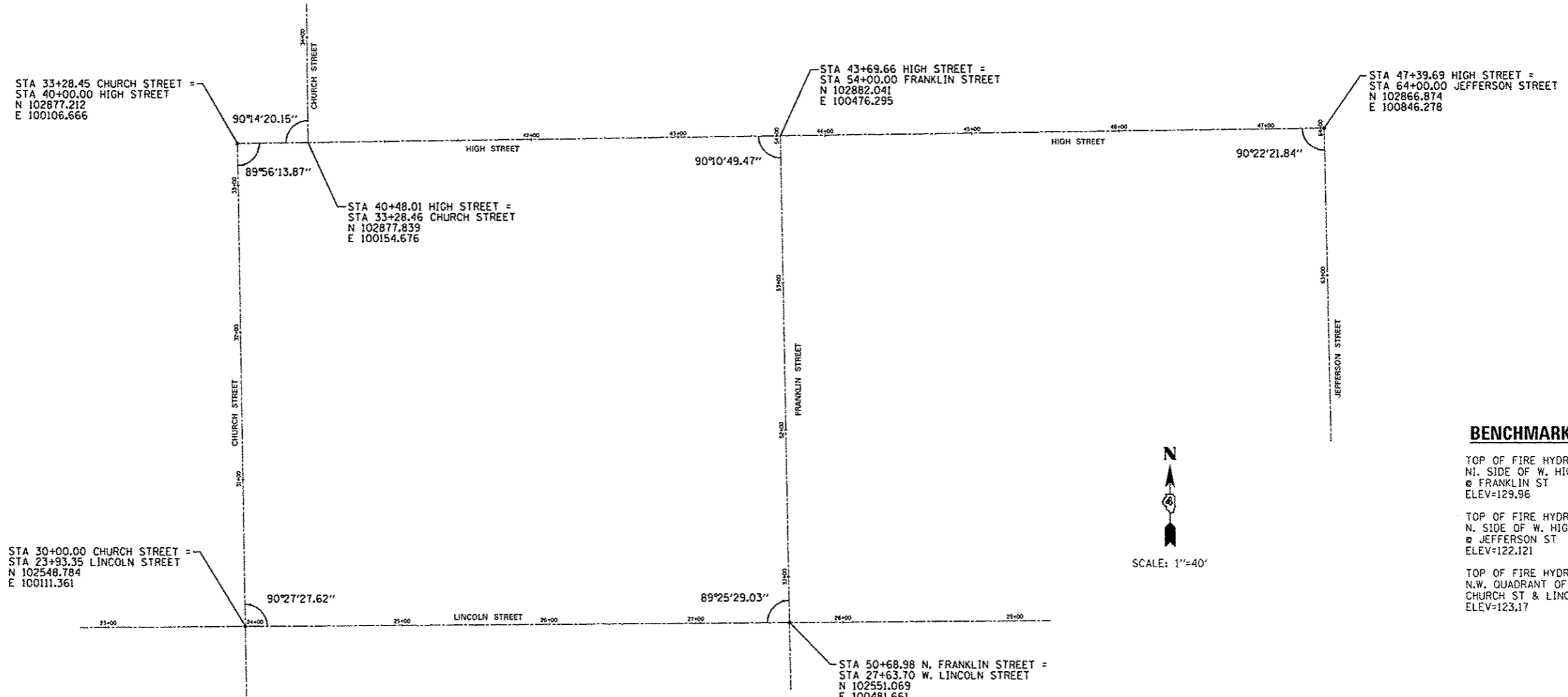
**CONTROL TIE**

PK NAIL  
 STA 27+43.30 / 16.22' RT  
 ELEV=125.96  
 N 102534.747  
 E 100464.362



**CONTROL TIE**

CHISLED "X"  
 STA 30+91.12 / 22.62' LT  
 ELEV=128.75  
 N 102608.818  
 E 100825.952



**BENCHMARKS**

TOP OF FIRE HYDRANT  
 N.I. SIDE OF W. HIGH ST  
 @ FRANKLIN ST  
 ELEV=129.96

TOP OF FIRE HYDRANT  
 N. SIDE OF W. HIGH ST  
 @ JEFFERSON ST  
 ELEV=122.121

TOP OF FIRE HYDRANT  
 N.W. QUADRANT OF  
 CHURCH ST & LINCOLN ST  
 ELEV=123.17

**Farnsworth**  
 GROUP, INC.  
 7707 North Knoxville Avenue, Suite 100  
 Peoria, Illinois 61614  
 309/689-0888, 309/689-9820 fax

USER NAME = <i>draimer</i>	DESIGNED - JOA	REVISED -
PLOT SCALE = 48.0000' / 1" =	DRAWN - DRR	REVISED -
PLOT DATE = 5/6/2014	CHECKED - ERB	REVISED -
	DATE - 05/05/14	REVISED -

STATE OF ILLINOIS  
 DEPARTMENT OF TRANSPORTATION

**CONTROL TIES & BENCH MARKS**

SCALE: SHEET OF SHEETS STA. TO STA.

F.A. RTE.	SECTION	COUNTY	TOTAL SHEETS	SHEET NO.
	12-00012-00-SW	WOODFORD	9	2
CONTRACT NO. B9648				
[ILLINOIS] FED. AID PROJECT				

SUMMARY OF QUANTITIES

CODE NO.	PAY ITEM	UNIT	QUANTITY
21101615	TOPSOIL FURNISH AND PLACE, 4"	SO YD	1069
25000110	SEEDING, CLASS 1A	ACRE	0.3
25000400	NITROGEN FERTILIZER NUTRIENT	POUND	25
25000500	PHOSPHORUS FERTILIZER NUTRIENT	POUND	25
25000600	POTASSIUM FERTILIZER NUTRIENT	POUND	25
25100115	MULCH, METHOD 2	ACRE	0.3
28000510	INLET FILTERS	EACH	6
40201000	AGGREGATE FOR TEMPDRARY ACCESS	TON	50
42300200	PORTLAND CEMENT CONCRETE DRIVEWAY PAVEMENT, 6 INCH	SO YD	249
42300400	PORTLAND CEMENT CONCRETE DRIVEWAY PAVEMENT, 8 INCH	SO YD	124
42400100	PORTLAND CEMENT CONCRETE SIDEWALK 4 INCH	SO FT	8,601
42001300	PROTECTIVE COAT	SO YD	1,526
42400800	DETECTABLE WARNINGS	SO FT	168
44000200	DRIVEWAY PAVEMENT REMOVAL	SO YD	150
44000500	COMBINATION CURB AND GUTTER REMOVAL	FOOT	880
44000600	SIDEWALK REMOVAL	SO FT	6,135
44201749	CLASS D PATCHES, TYPE I, 9 INCH	SO YD	35
44201753	CLASS D PATCHES, TYPE II, 9 INCH	SO YD	10
44201759	CLASS D PATCHES, TYPE IV, 9 INCH	SO YD	162
60603800	COMBINATION CONCRETE CURB AND GUTTER, TYPE B-6.12	FOOT	885
67100100	MOBILIZATION	L SUM	1
* 78001130	PAINT PAVEMENT MARKING - LINE 6"	FOOT	460
* 78001180	PAINT PAVEMENT MARKING - LINE 24"	FOOT	150
78300100	PAVEMENT MARKING REMOVAL	SO FT	140
X7010216	TRAFFIC CONTROL AND PROTECTION, (SPECIAL)	L SUM	1
Z0013798	CONSTRUCTION LAYOUT	L SUM	1

\* Specialty Items

REMOVAL ITEMS

FROM	TO	44000200 DRIVEWAY PAVEMENT REMOVAL SQ YD	44000500 COMBINATION CURB AND GUTTER REMOVAL FOOT	44000600 SIDEWALK REMOVAL SQ FT
CHURCH STREET				
29+59/LT	34+88/LT	78	118	2,043
HIGH STREET				
40+48/LT	47+40/LT	72	721	2,405
FRANKLIN STREET				
50+34/LT	54+00/LT		21	1,447
50+34/RT	51+10/RT		20	240
TOTAL		150	880	6,135

CLASS D PATCHING AND CURB AND GUTTER

FROM	TO	44201749 CLASS D PATCHES, TYPE I, 9 INCH SQ YD	44201753 CLASS D PATCHES, TYPE II, 9 INCH SQ YD	44201759 CLASS D PATCHES, TYPE IV 9 INCH SQ YD	60603800 COMBINATION CONCRETE CURB AND GUTTER, TYPE B-6.12 FOOT
CHURCH STREET					
29+59/LT	34+88/LT	19	10		118
HIGH STREET					
40+48/LT	47+40/LT			162	714
FRANKLIN STREET					
50+34/LT	54+00/LT	8			27
50+34/RT	51+10/RT	8			26
TOTAL		35	10	162	885

TOPSOIL AND RESTORATION

FROM STA	TO STA	21101615 TOPSOIL FURNISH AND PLACE, 4" SQ YD	25000110 SEEDING, CLASS 1A ACRE	25000400 NITROGEN FERTILIZER NUTRIENT POUND	25000500 PHOSPHORUS FERTILIZER NUTRIENT POUND	25000600 POTASSIUM FERTILIZER NUTRIENT POUND	25100115 MULCH, METHOD 2 ACRE
CHURCH STREET							
29+59/LT	34+88/LT	340	0.11	10	10	10	0.11
HIGH STREET							
40+48/LT	47+40/LT	493	0.10	9	9	9	0.10
FRANKLIN STREET							
50+34/LT	54+00/LT	203	0.01	1	1	1	0.01
50+34/RT	51+10/RT	33	0.05	5	5	5	0.05
TOTAL		1,069	0.3	25	25	25	0.3

DRIVEWAYS

STATION	OFFSET	42300200 PORTLAND CEMENT CONCRETE DRIVEWAY PAVEMENT, 6 INCH SQ YD	42300400 PORTLAND CEMENT CONCRETE DRIVEWAY PAVEMENT, 8 INCH SQ YD
CHURCH STREET			
31+55	LEFT	30	
32+44	LEFT	33	
33+22,+25	LEFT	115	
HIGH STREET			
41+72	LEFT	71	
42+39	LEFT		67
47+19	LEFT		57
TOTAL		249	124

PAVEMENT MARKING REMOVAL

	SO FT
CHURCH STREET / LINCOLN STREET	30
CHURCH STREET / HIGH STREET	45
FRANKLIN STREET / LINCOLN STREET	30
HIGH STREET / STA. 43+50	35
TOTAL	140

SIDEWALK

FROM	TO	OFFSET	42400100 PORTLAND CEMENT CONCRETE SIDEWALK 4 INCH SQ FT	42400800 DETECTABLE WARNINGS SQ FT
CHURCH STREET				
29+59	29+85	LEFT	137	10
30+16	34+88	LEFT	2,131	20
HIGH STREET				
40+65	47+40	LEFT	4,260	58
FRANKLIN STREET				
50+34	50+54	LEFT	104	10
50+34	50+54	RIGHT	92	10
50+85	53+77	LEFT	1,608	30
50+85	51+13	RIGHT	207	20
53+67	53+77	RIGHT	62	10
TOTAL			8,601	168

PAVEMENT MARKINGS

FROM STA	TO STA	78001130 PAINT PAVEMENT MARKING - LINE 6" FOOT	78001180 PAINT PAVEMENT MARKING - LINE 24" FOOT
CHURCH STREET			
85+25	59+03	115	28
HIGH STREET			
73+30	73+92	154	34
FRANKLIN STREET			
58+25	88+52	191	88
TOTAL		460	150



USER NAME: dresner  
DESIGNED: JDA  
DRAWN: DRR  
CHECKED: ERB  
DATE: 05/05/14

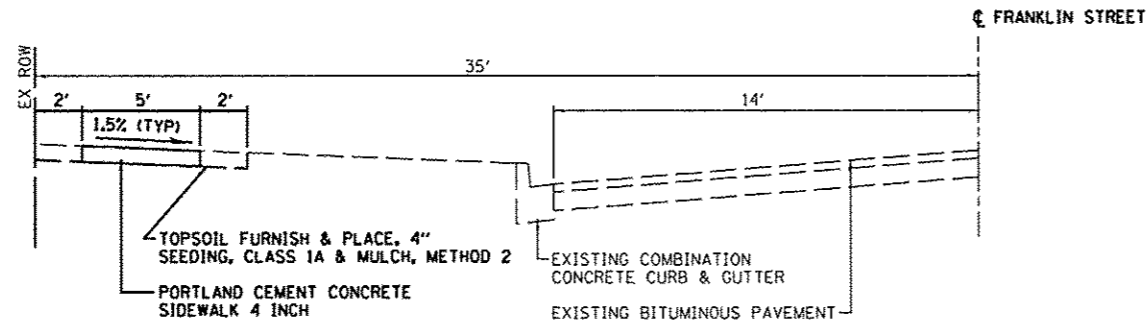
REVISOR: -  
REVISION: -  
REVISION: -  
REVISION: -

STATE OF ILLINOIS  
DEPARTMENT OF TRANSPORTATION

SAFE ROUTES TO SCHOOL - ROANOKE, IL  
SCHEDULE AND SUMMARY OF QUANTITIES

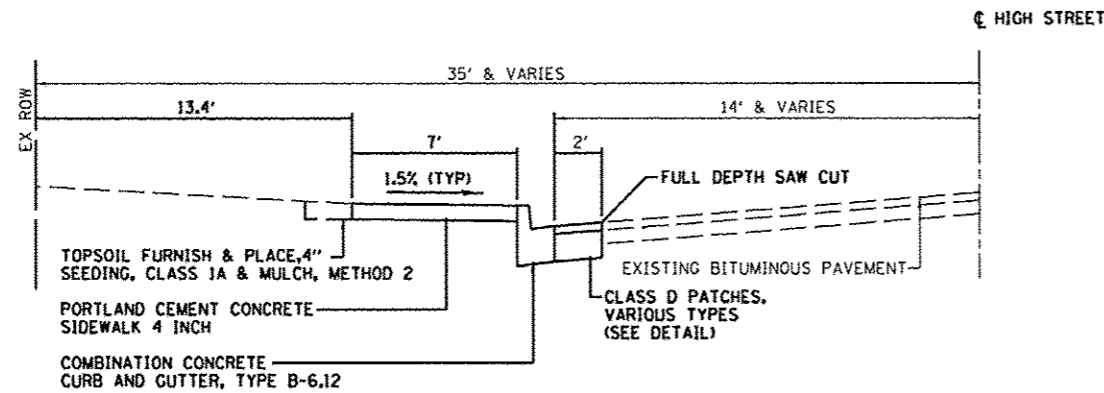
F.A. RTE. SECTION 12-00012-00-SW COUNTY WOODFORD TOTAL SHEETS 9 SHEET NO. 3 CONTRACT NO. 8964B ILLINOIS FED. AID PROJECT

SCALE: SHEET OF SHEETS STA. TO STA.



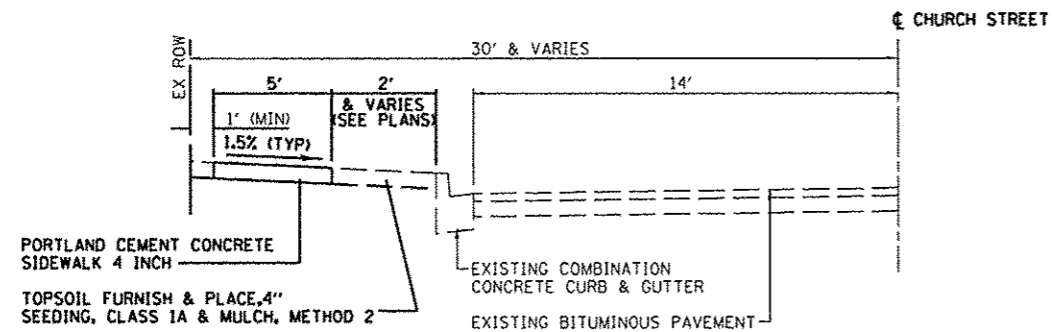
**FRANKLIN STREET - PROPOSED TYPICAL SECTION**

STA. 50+34 TO STA. 54+00



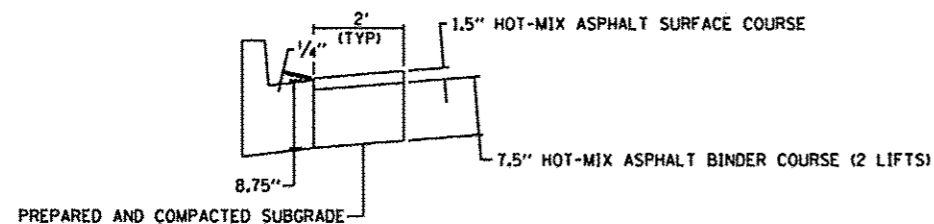
**HIGH STREET - PROPOSED TYPICAL SECTION**

STA. 40+00 TO STA. 47+40



**CHURCH STREET - PROPOSED TYPICAL SECTION**

STA. 29+59 TO STA. 34+88



**CLASS D PATCHES DETAIL**

**GENERAL NOTES**

- ALL CONSTRUCTION SHALL BE IN ACCORDANCE WITH ILLINOIS DEPARTMENT OF TRANSPORTATION STANDARD SPECIFICATIONS FOR ROAD AND BRIDGE CONSTRUCTION, ADOPTED JANUARY 1, 2012 AND THE SUPPLEMENTAL SPECIFICATIONS AND RECURRING SPECIAL PROVISIONS OF THE STATE OF ILLINOIS, ADOPTED JANUARY 1, 2014. ANY REFERENCE TO A STANDARD IN THESE PLANS SHALL BE TAKEN TO MEAN THE LATEST EDITION OF THE CITED STANDARD.
- ALL EXISTING UNDERGROUND UTILITIES SHOWN ON PLANS ARE APPROXIMATE. EXACT LOCATIONS AND DEPTHS SHALL BE DETERMINED BY THE CONTRACTOR PRIOR TO CONSTRUCTION. CONTRACTOR SHALL CALL J.U.L.I.E. AT 1-800-892-0123, 48 HOURS PRIOR TO CONSTRUCTION.
- THE CONTRACTOR SHALL BE RESPONSIBLE FOR THE PROTECTION OF ALL UTILITIES WITHIN THE CONSTRUCTION LIMITS. IF ANY UTILITY IS DAMAGED DURING THE COURSE OF CONSTRUCTION, THE UTILITY OWNER SHALL BE NOTIFIED IMMEDIATELY. THE CONTRACTOR SHALL BE RESPONSIBLE FOR ANY EXPENSES INCURRED TO REPAIR THE UTILITY.
- IF A UTILITY CONFLICT ARISES WHICH WILL RESULT IN POTENTIAL DAMAGE TO A UTILITY OR WILL CAUSE THE DESIGN TO BE REVISED, CONTACT THE ENGINEER.
- DRAINAGE AND STORM STRUCTURES SHALL BE KEPT FREE OF DEBRIS AND DIRT DURING THE COURSE OF CONSTRUCTION. CONTRACTOR SHALL BE RESPONSIBLE FOR ANY DAMAGE CAUSED BY ANY STORM SEWER BACKUPS.
- NO TREES WITHIN THE CONTRACT LIMITS ARE TO BE REMOVED TRIMMED OR DAMAGED. ANY CONFLICT WITH EXISTING TREES, CONTRACTOR TO NOTIFY ENGINEER PRIOR TO CONSTRUCTION.
- EARTH EXCAVATION AND BACKFILL FOR PROPOSED CURB AND GUTTERS, DRIVEWAY PAVEMENTS AND SIDEWALKS SHALL BE INCLUDED IN THE UNIT COST FOR THE VARIOUS ITEMS.
- ALL ELEVATIONS SHOWN ON THE PLANS ARE ESTABLISHED FROM U.S.G.S. MEAN SEA LEVEL DATUM.
- PRIOR TO THE USE OF ANY PROPOSED BORROW AREAS, USE AREAS (TEMPORARY ACCESS ROADS, DETOURS, RUN-AROUNDS, ETC.) AND/OR WASTE AREAS, THE CONTRACTOR SHALL FILE THE REQUIRED ENVIRONMENTAL RESOURCE REQUEST SURVEYS ACCORDING TO SECTION 107.22 OF THE STANDARD SPECIFICATIONS. THESE SURVEYS ARE REQUIRED IN ORDER FOR THE DEPARTMENT TO CONDUCT CULTURAL AND BIOLOGICAL RESOURCE SURVEYS FOR THE PROPOSED SITE.
- PRIOR TO ANY WASTE MATERIALS BEING REMOVED FROM THE CONSTRUCTION SITE THE REQUIRED ENVIRONMENTAL RESOURCE SURVEYS WILL NEED TO BE OBTAINED AND FILED BY THE CONTRACTOR. EXCESS WASTE PRODUCTS REMOVED FROM THE CONSTRUCTION SITE SHALL BE DISPOSED OF AS REQUIRED IN SECTION 202.03 OF THE STANDARD SPECIFICATIONS.
- ANY PROTRUDING METAL BARS SHALL BE REMOVED TO THE DISPOSAL OF BROKEN CONCRETE AT APPROVED DISPOSAL SITES.
- THE REQUIRED ENVIRONMENTAL RESOURCE DOCUMENTATION SHALL INCLUDE THE FOLLOWING:
  - BDE FORM 2289 (CULTURAL AND NATURAL RESOURCES REVIEW OF BORROW AREAS) AND
  - BDE FORM 2290 (WASTE/USE AREA REVIEW)
  - A LOCATION MAP SHOWING THE SIZE LIMITS AND LOCATION OF THE USE AREA.
  - SIGNED PROPERTY OWNER AGREEMENT FORM - D4 P10100
  - COLOR PHOTOGRAPHS DEPICTING THE USE AREA
  - BORROW AREA ENTRY AGREEMENT FORM - D4 P10101
- PLEASE NOTE THAT A MINIMUM OF SIX WEEKS SHALL BE ALLOWED FOR THE DISTRICT TO OBTAIN THE REQUIRED ENVIRONMENTAL CLEARANCES.
- SIDEWALKS INSTALLED AT A SLOPE GREATER THAN 2.00% OR OTHERWISE NOT MEETING ADA AND PROWAG REQUIREMENTS SHALL BE REMOVED AND REPLACED AT THE CONTRACTORS EXPENSE.

MIXTURE REQUIREMENTS		
MIXTURE USE(S):	CLASS D PATCHES (TOP LIFT)	CLASS D PATCHES (BOTTOM 2 LIFTS)
RAP % (MAX)	10%	10%
AC/PG	PG 64-22	PG 64-22
DESIGN AIR VOIDS	4.0% @ Ndes = 50	4.0% @ Ndes = 50
MIXTURE COMPOSITION (GRADATION MIXTURE)	IL-9.5 or IL-12.5	IL-19.0
FRICTION AGGREGATE	MIXTURE D	-

**Farnsworth GROUP, INC.**  
7707 North Knoxville Avenue, Suite 100  
Peoria, Illinois 61614  
309/699-9998 309/699-9820 fax

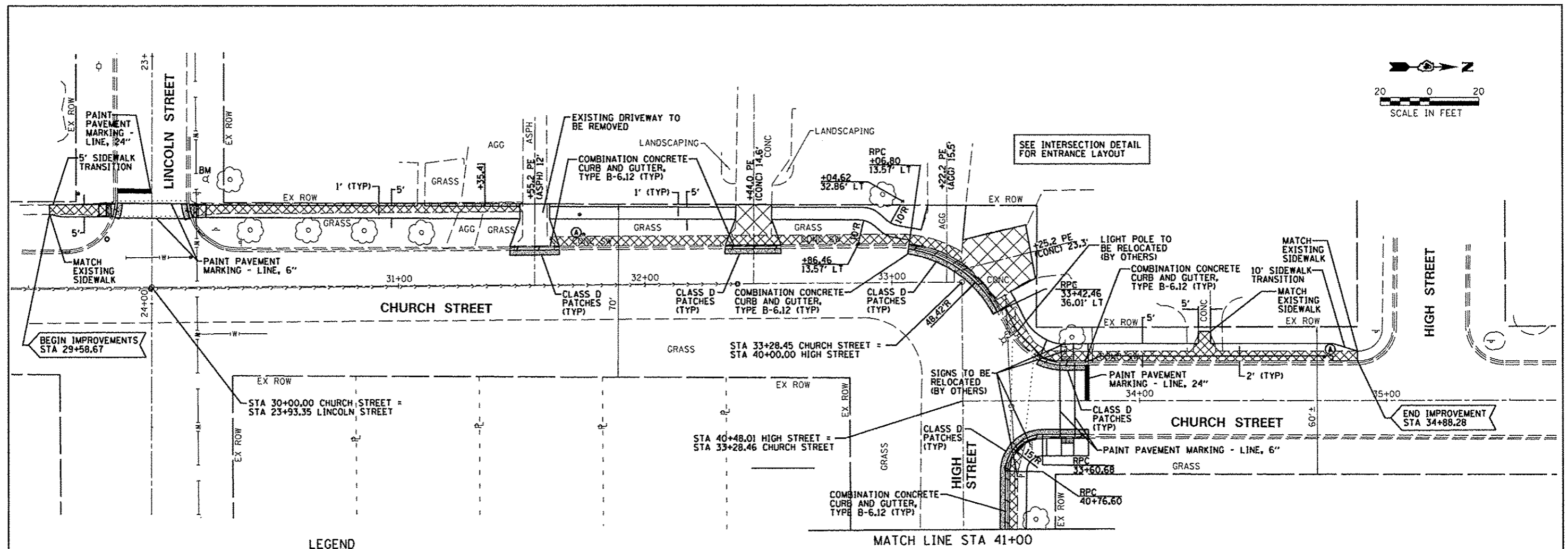
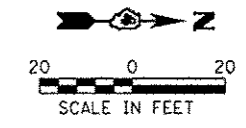
USER NAME * #USER*	DESIGNED - JDA	REVISED -
PLOT SCALE * #SCALE*	DRAWN - DRR	REVISED -
PLOT DATE * #DATE*	CHECKED - ERB	REVISED -
	DATE - 05/05/14	REVISED -

STATE OF ILLINOIS  
DEPARTMENT OF TRANSPORTATION

SAFE ROUTES TO SCHOOL - ROANOKE, IL  
TYPICAL SECTIONS AND GENERAL NOTES

SCALE: NONE SHEET OF SHEETS STA. TO STA.

F.A. RTE.	SECTION	COUNTY	TOTAL SHEETS	SHEET NO.
	12-00012-00-SW	WOODFORD	9	4
CONTRACT NO. 89648				
[ILLINOIS] FED. AID PROJECT				



**LEGEND**

- | EXISTING |                            | PROPOSED |  |
|----------|----------------------------|----------|--|
| ●        | IRON ROD                   | =====    | COMBINATION CONCRETE CURB & GUTTER, TYPE B6.18 |
| ○        | BENCHMARK                  | Ⓐ        | ITEM TO BE ADJUSTED (BY OTHERS)                |
| ⊕        | SIGN                       | ▨        | DETECTABLE WARNING                             |
| ⊕        | MAILBOX                    | ▨        | CLASS D PATCHES                                |
| ⊕        | STREET LIGHT               | ---      | CURB AND GUTTER REMOVAL                        |
| ⊕        | POWER POLE                 | ▨        | DRIVEWAY CONCRETE PAVEMENT REMOVAL             |
| ⊕        | DOWN GUY                   | ▨        | CONCRETE SIDEWALK REMOVAL                      |
| ⊕        | ELECTRIC HANDHOLE          |          |  |
| ⊕        | FIRE HYDRANT               |          |  |
| ⊕        | DOMESTIC WATER SERVICE BOX |          |  |
| ⊕        | WATER VALVE                |          |  |
| ⊕        | GAS VALVE                  |          |  |
| ⊕        | TELEPHONE PEDESTAL         |          |  |
| ⊕        | WOODEN POST                |          |  |
| ⊕        | CATCH BASIN                |          |  |
| ⊕        | INLET                      |          |  |
| ⊕        | MANHOLE                    |          |  |
| ⊕        | EVERGREEN TREE             |          |  |
| ⊕        | TREE                       |          |  |
| ⊕        | BUSH                       |          |  |
| ---      | RIGHT OF WAY LINE          |          |  |
| ---      | CENTERLINE                 |          |  |
| ---      | FENCE                      |          |  |
| ---      | SANITARY SEWER             |          |  |
| ---      | STORM SEWER                |          |  |
| ---      | WATERMAIN                  |          |  |
| ---      | OVERHEAD ELECTRIC          |          |  |

**ABBREVIATIONS**

- BM BENCHMARK  
 TBR TO BE REMOVED  
 TYP TYPICAL

**NOTES:**

1. ALL CONFLICTING SIGNS, HYDRANTS, WATER VALVES, STREET LIGHT, GAS VALVES, ETC. SHALL BE RELOCATED OR ADJUSTED BY OTHERS.
2. ALL SIDEWALK TO BE CONSTRUCTED WITH 1.5% CROSS SLOPE, OR FLATTER.
3. SEE SCHEDULE OF QUANTITIES FOR REMOVAL ITEM LOCATIONS AND QUANTITIES.
4. SEE INTERSECTION DETAIL SHEET FOR ADDITIONAL SIDEWALK RAMP INFORMATION.

**Farnsworth GROUP, INC.**  
 7707 North Knoxville Avenue, Suite 100  
 Peoria, Illinois 61614  
 309/680-9888, 309/689-9929 fax

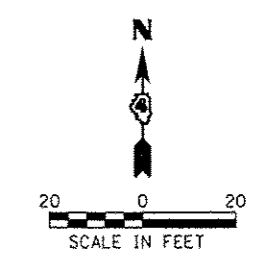
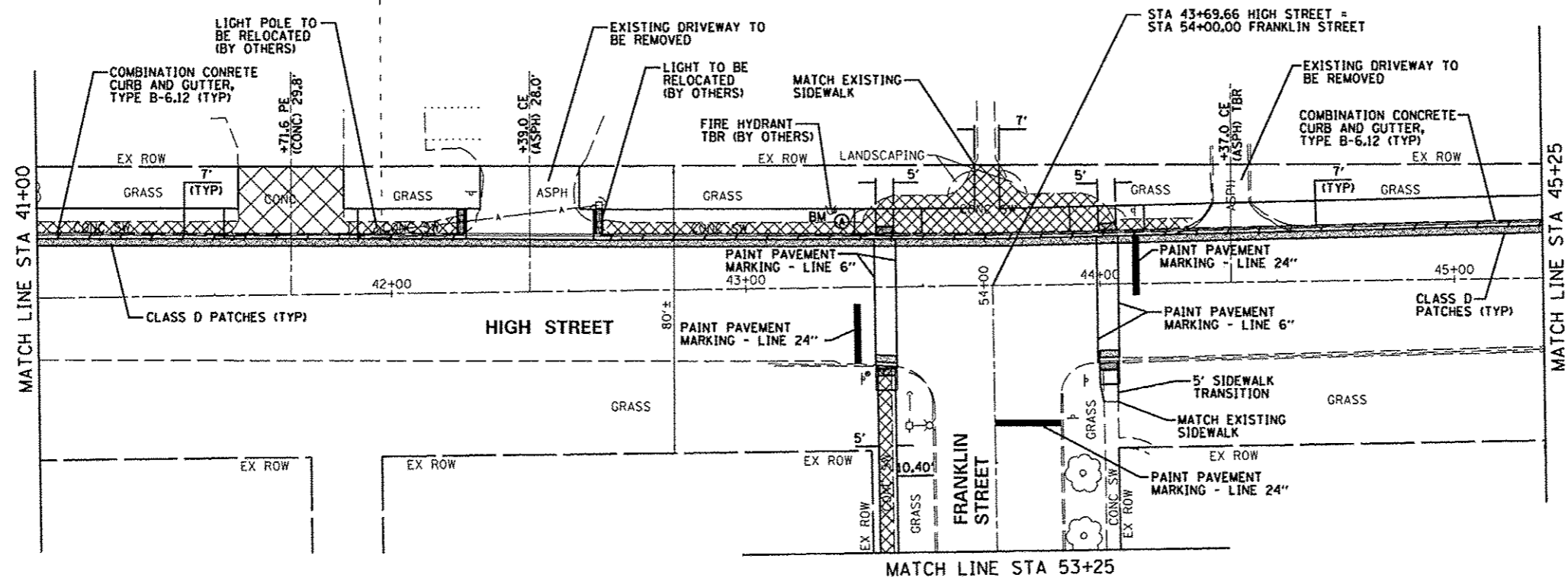
USER NAME = #USER#	DESIGNED - JDA	REVISED -
PLOT SCALE = #SCALE#	DRAWN - DRR	REVISED -
PLOT DATE = #DATE#	CHECKED - ERB	REVISED -
	DATE - 05/05/14	REVISED -

**STATE OF ILLINOIS  
 DEPARTMENT OF TRANSPORTATION**

**SAFE ROUTES TO SCHOOL - ROANOKE, IL  
 CHURCH STREET PLAN SHEET**

SCALE: 1"=20' SHEET OF SHEETS: 6 SHEETS, 34788.SBA.

F.A. RTE.	SECTION	COUNTY	TOTAL SHEETS	SHEET NO.
	12-00012-00-SW	WOODFORD	9	5
CONTRACT NO. 89648				
ILLINOIS FED. AID PROJECT				

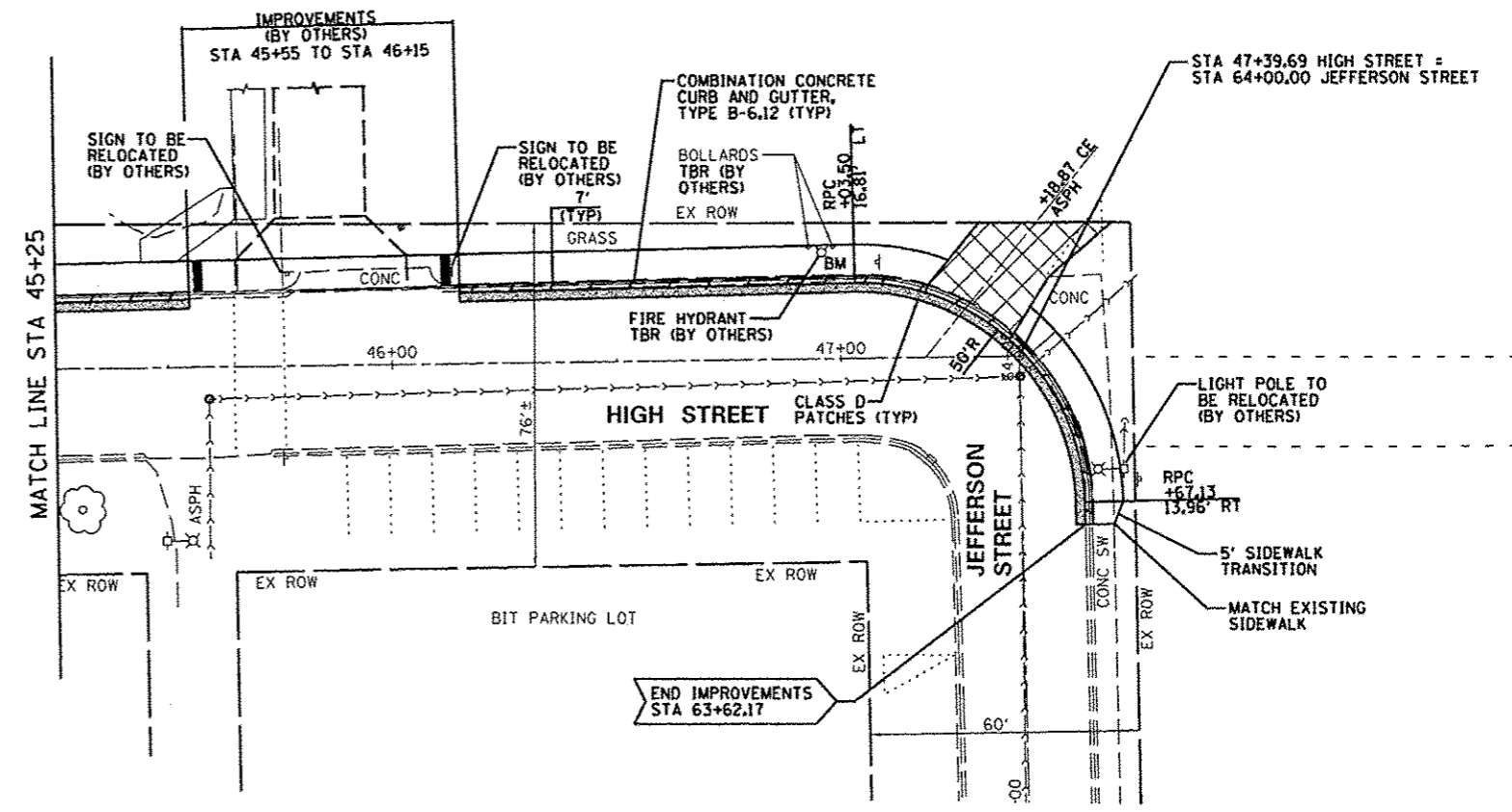


**LEGEND**

- EXISTING**
- IRON ROD
  - BENCHMARK
  - ⊕ SIGN
  - ⊕ MAILBOX
  - ⊕ STREET LIGHT
  - ⊕ POWER POLE
  - ⊕ DOWN GUY
  - ⊕ ELECTRIC HANDHOLE
  - ⊕ FIRE HYDRANT
  - ⊕ DOMESTIC WATER SERVICE BOX
  - ⊕ WATER VALVE
  - ⊕ GAS VALVE
  - ⊕ TELEPHONE PEDESTAL
  - WOODEN POST
  - ⊕ CATCH BASIN
  - ⊕ INLET
  - ⊕ MANHOLE
  - ⊕ EVERGREEN TREE
  - ⊕ TREE
  - ⊕ BUSH
  - RIGHT OF WAY LINE
  - CENTERLINE
  - FENCE
  - SANITARY SEWER
  - STORM SEWER
  - WATERMAIN
  - OVERHEAD ELECTRIC

- PROPOSED**
- ▬ COMBINATION CONCRETE CURB & GUTTER, TYPE B6.18
  - ⊕ ITEM TO BE ADJUSTED (BY OTHERS)
  - ▬ DETECTABLE WARNING
  - ▬ CLASS D PATCHES
  - ▬ CURB AND GUTTER REMOVAL
  - ▬ DRIVEWAY CONCRETE PAVEMENT REMOVAL
  - ▬ CONCRETE SIDEWALK REMOVAL

- ABBREVIATIONS**
- BM BENCHMARK
  - TBR TO BE REMOVED
  - TYP TYPICAL



**Farnsworth GROUP, INC.**  
 1707 North Knoxville Avenue, Suite 100  
 Peoria, Illinois 61614  
 309-688-8888, 309-689-9820 fax

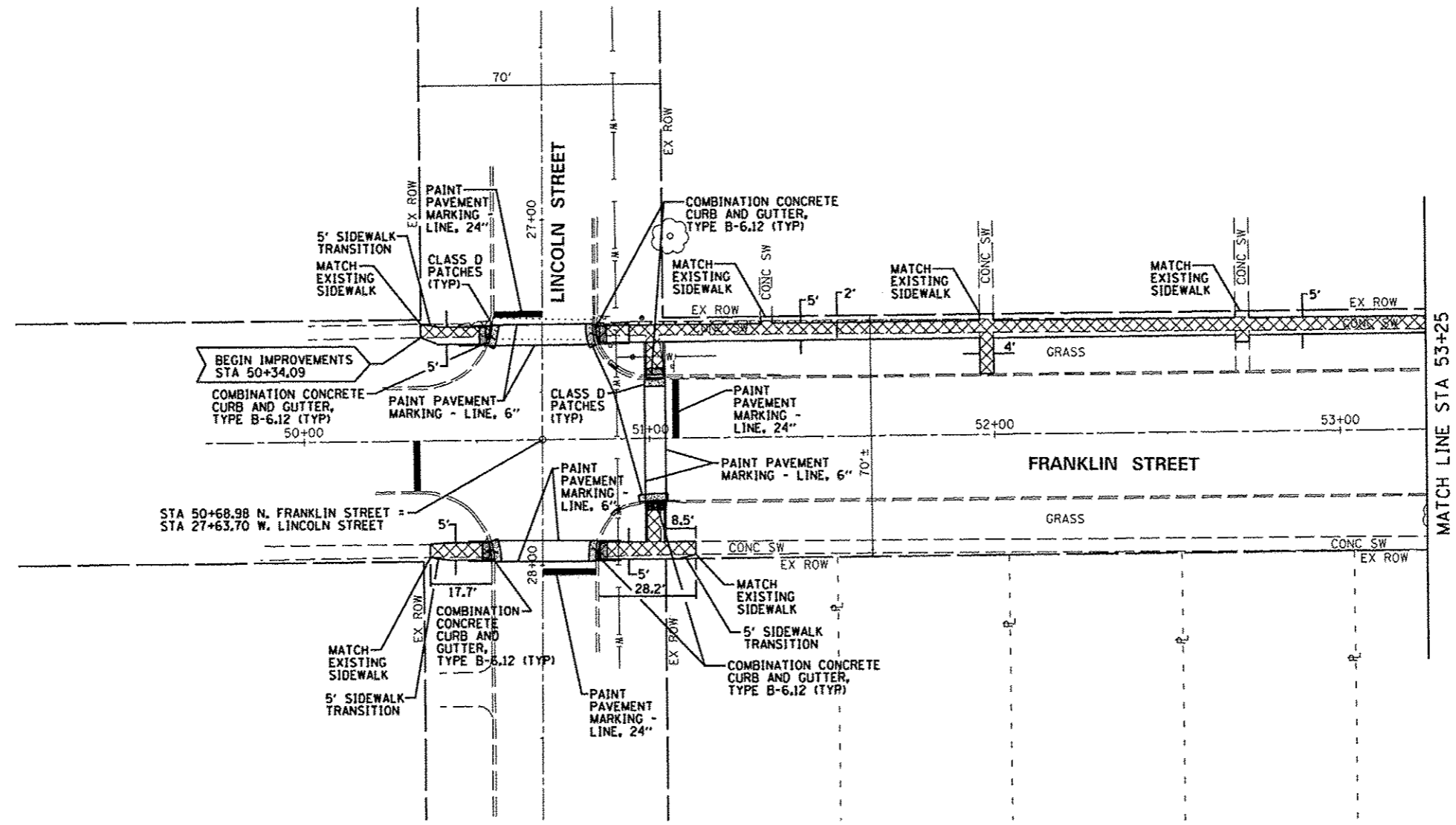
USER NAME * #USER#	DESIGNED - JDA	REVISED -
PLOT SCALE * #SCALE#	DRAWN - DRR	REVISED -
PLOT DATE * #DATE#	CHECKED - ERB	REVISED -
	DATE - 05/05/14	REVISED -

**STATE OF ILLINOIS  
 DEPARTMENT OF TRANSPORTATION**

**SAFE ROUTES TO SCHOOL - ROANOKE, IL  
 HIGH STREET PLAN SHEET**

SCALE: 1"=20' SHEET OF SHEETS(SIX) 63RD ST/7A JEFFERSON

F.A. RTE.	SECTION	COUNTY	TOTAL SHEETS	SHEET NO.
	12-00012-00-SW	WOODFORD	9	6
			CONTRACT NO. 89648	
ILLINOIS FED. AID PROJECT				



**LEGEND**

- |  |  |  |
|--|--|--|
| <ul style="list-style-type: none"> <li>● IRON ROD</li> <li>○ BENCHMARK</li> <li>⊥ SIGN</li> <li>⊥ MAILBOX</li> <li>⊥ STREET LIGHT</li> <li>⊥ POWER POLE</li> <li>⊥ DOWN GUY</li> <li>⊥ ELECTRIC HANDHOLE</li> <li>⊥ FIRE HYDRANT</li> <li>⊥ DOMESTIC WATER SERVICE BOX</li> <li>⊥ WATER VALVE</li> <li>⊥ GAS VALVE</li> <li>⊥ TELEPHONE PEDESTAL</li> <li>○ WOODEN POST</li> </ul> | <p>EXISTING</p> <ul style="list-style-type: none"> <li>⊙ CATCH BASIN</li> <li>⊥ INLET</li> <li>⊙ MANHOLE</li> <li>⊙ EVERGREEN TREE</li> <li>⊙ TREE</li> <li>⊙ BUSH</li> <li>— RIGHT OF WAY LINE</li> <li>— CENTERLINE</li> <li>— FENCE</li> <li>— SANITARY SEWER</li> <li>— STORM SEWER</li> <li>— WATERMAIN</li> <li>— OVERHEAD ELECTRIC</li> </ul> | <p>PROPOSED</p> <ul style="list-style-type: none"> <li>▬ COMBINATION CONCRETE CURB &amp; GUTTER, TYPE B6.18</li> <li>⊙ ITEM TO BE ADJUSTED (BY OTHERS)</li> <li>▬ DETECTABLE WARNING</li> <li>▬ CLASS D PATCHES</li> <li>▬ CURB AND GUTTER REMOVAL</li> <li>▬ DRIVEWAY CONCRETE PAVEMENT REMOVAL</li> <li>▬ CONCRETE SIDEWALK REMOVAL</li> </ul> |
|--|--|--|

- ABBREVIATIONS**
- BM BENCHMARK
  - TBR TO BE REMOVED
  - TYP TYPICAL

**NOTES:**

1. ALL CONFLICTING SIGNS, HYDRANTS, WATER VALVES, STREET LIGHT, GAS VALVES, ETC. SHALL BE RELOCATED OR ADJUSTED BY OTHERS.
2. ALL SIDEWALK TO BE CONSTRUCTED WITH 1.5% CROSS SLOPE, OR FLATTER.
3. SEE SCHEDULE OF QUANTITIES FOR REMOVAL ITEM LOCATIONS AND QUANTITIES.
4. SEE INTERSECTION DETAIL SHEET FOR ADDITIONAL SIDEWALK RAMP INFORMATION.

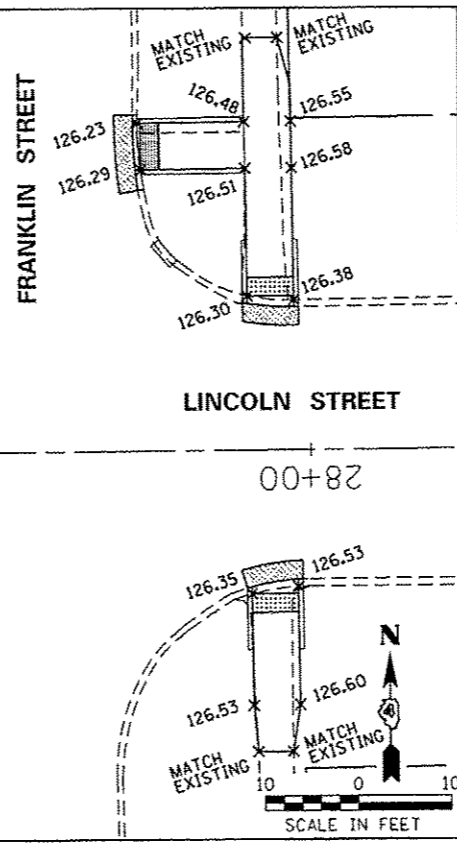
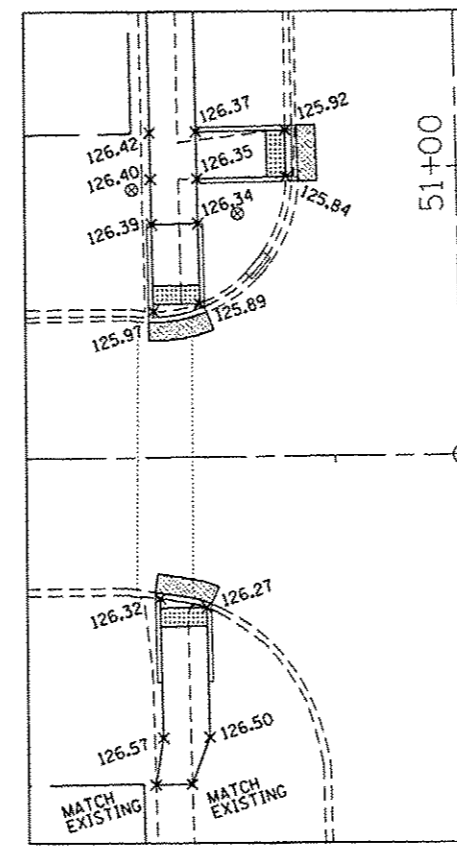
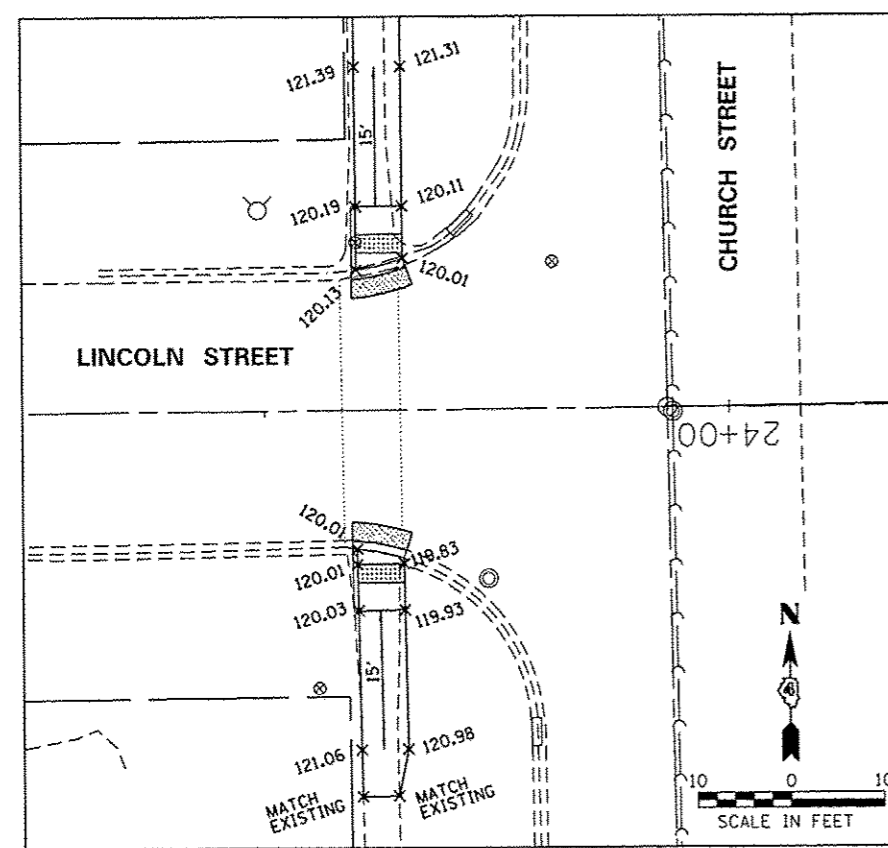
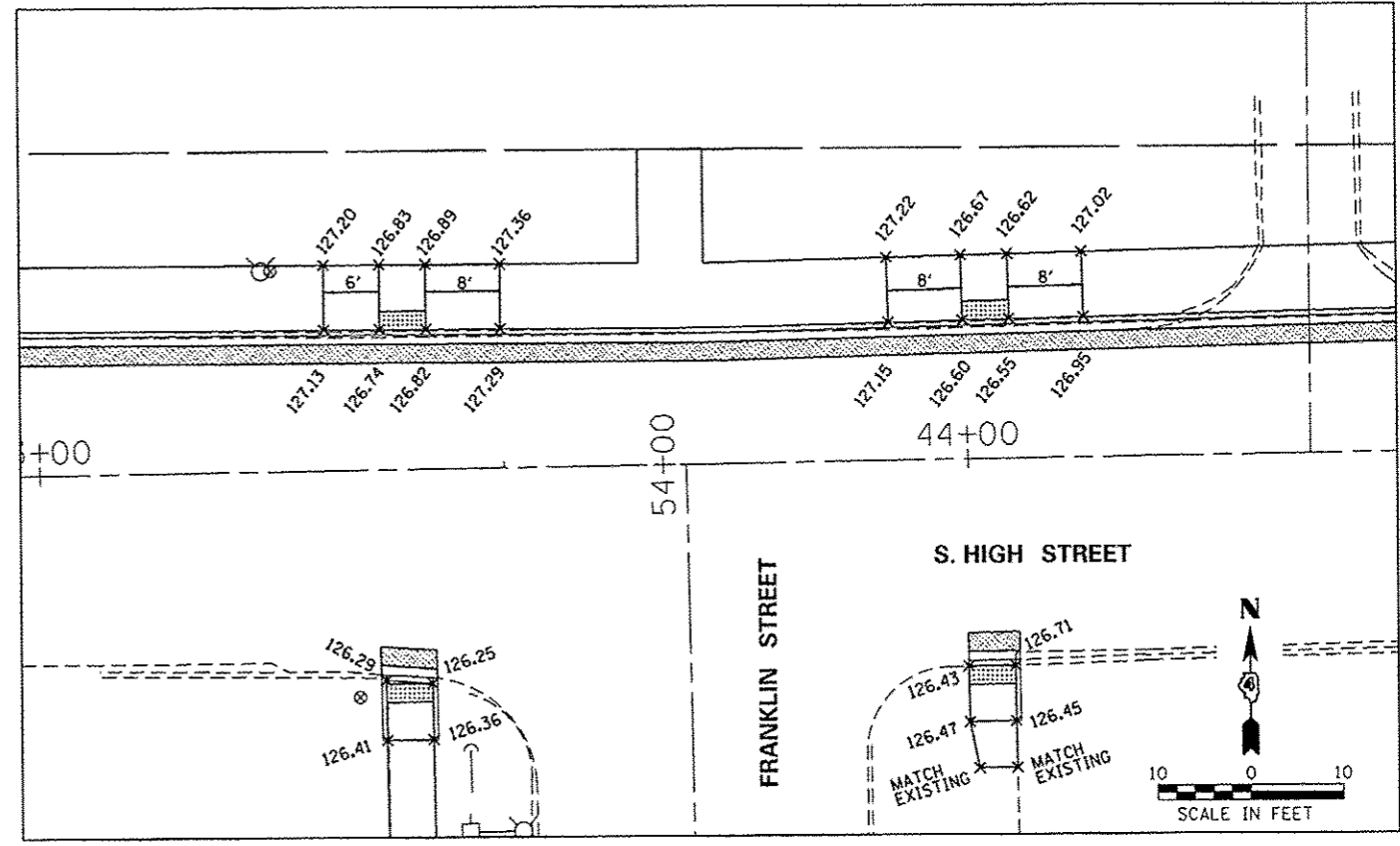
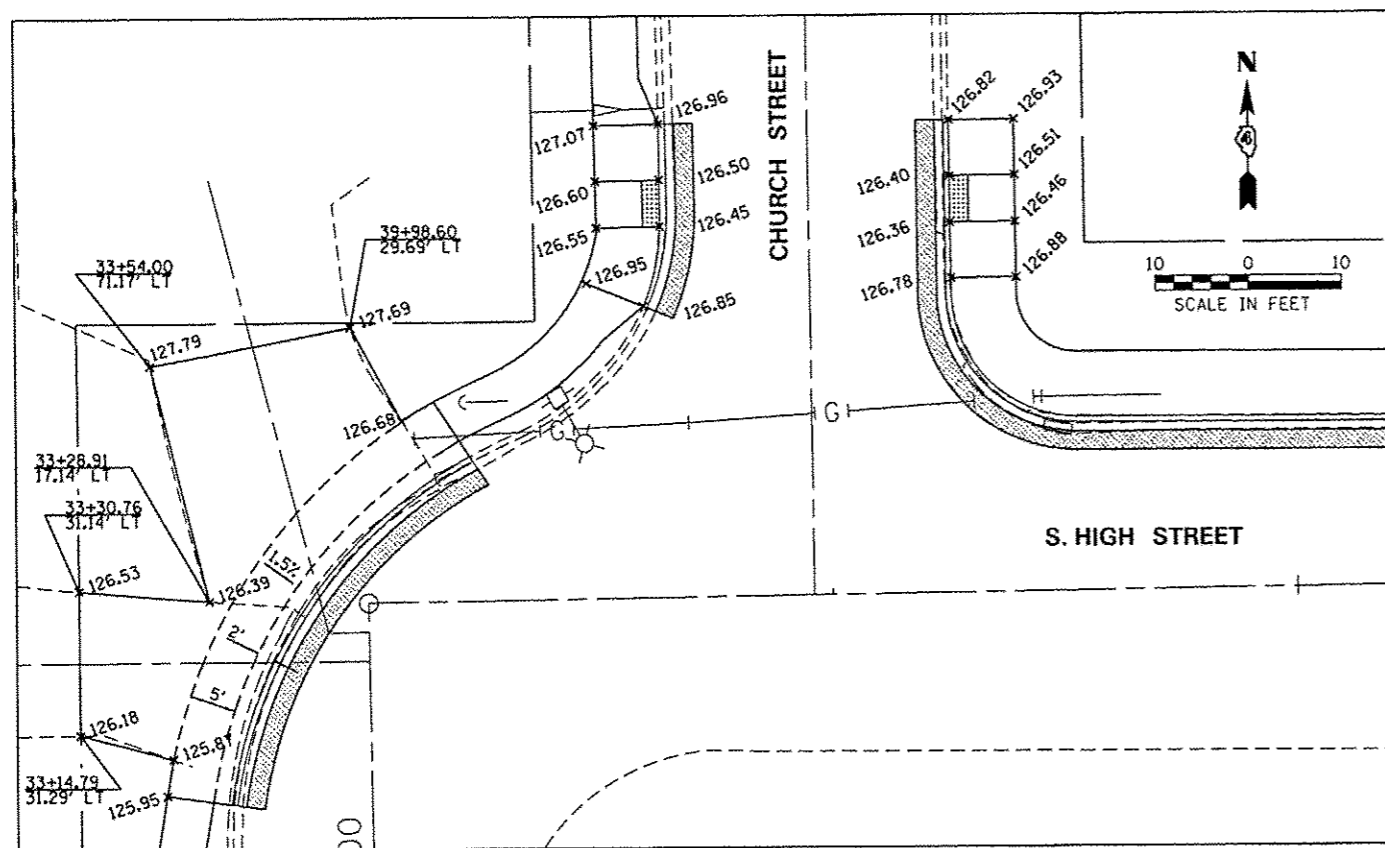
**Farnsworth GROUP, INC.**  
 7707 North Knoxville Avenue, Suite 100  
 Peoria, Illinois 61614  
 309/689-9888 309/689-9820 fax

USER NAME * #USER#	DESIGNED - JDA	REVISED -
PLOT SCALE * #SCALE#	DRAWN - DRR	REVISED -
PLOT DATE * #DATE#	CHECKED - ERB	REVISED -
	DATE - 05/05/14	REVISED -

**STATE OF ILLINOIS  
 DEPARTMENT OF TRANSPORTATION**

<b>SAFE ROUTES TO SCHOOL - ROANOKE, IL</b>	
<b>FRANKLIN STREET PLAN SHEET</b>	
SCALE: 1"=20'	SHEET OF SHEETS 3600 53423504

F.A. RTE.	SECTION	COUNTY	TOTAL SHEETS	SHEET NO.
	12-00012-00-SW	WOODFORD	9	7
CONTRACT NO. 89648				
ILLINOIS FED. AID PROJECT				



<p>Farnsworth GROUP, INC. 7707 North Knoxville Avenue, Suite 100 Peoria, Illinois 61614 309-689-9888, 309-689-9870 fax</p>	USER NAME = <i>drajmer</i>	DESIGNED - JDA	REVISED -
	PLT SCALE = 28.0000' / 1" =	DRAWN - DRR	REVISED -
	DATE = 5/8/2014	CHECKED - ERB	REVISED -
		DATE - 05/05/14	REVISED -

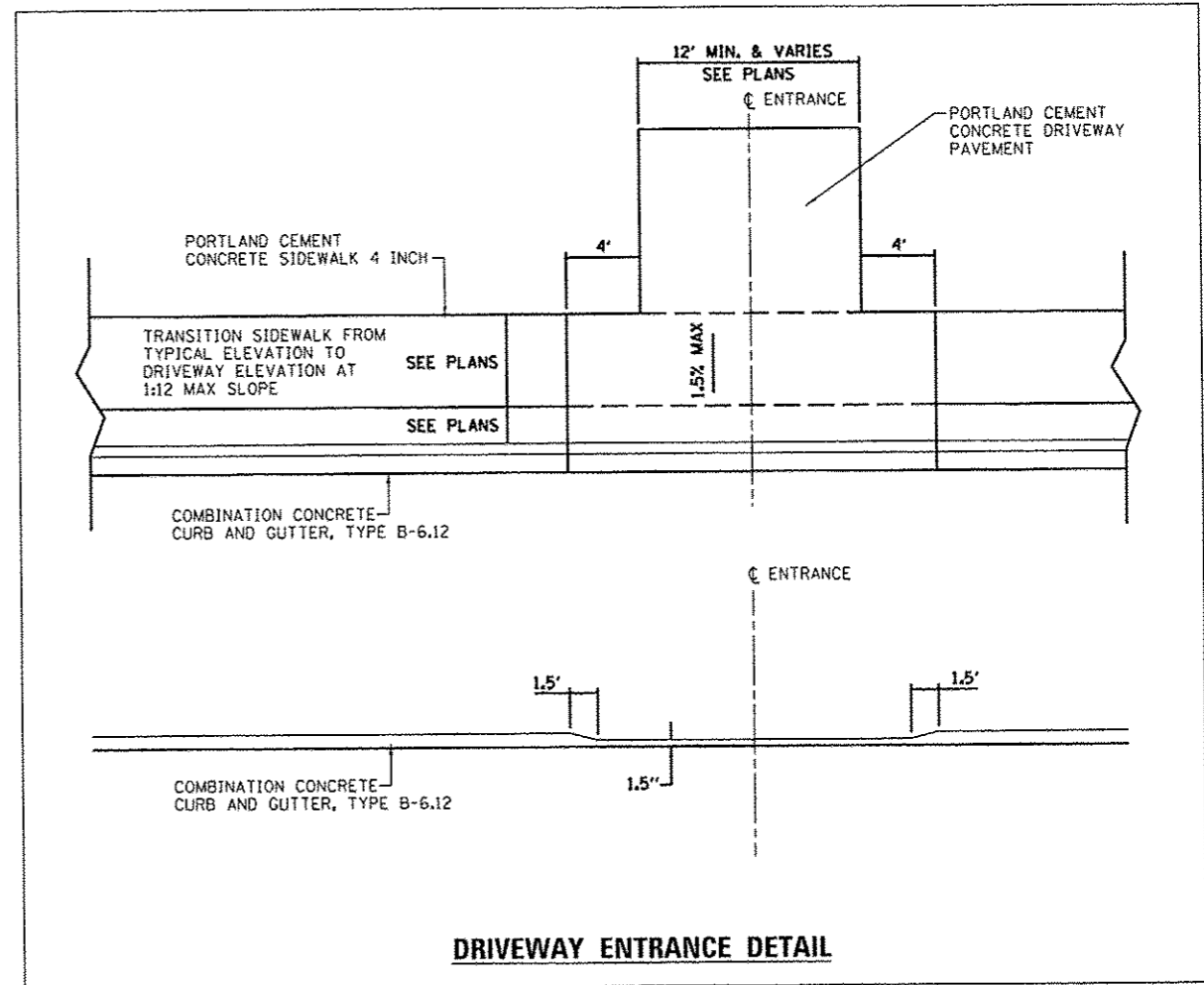
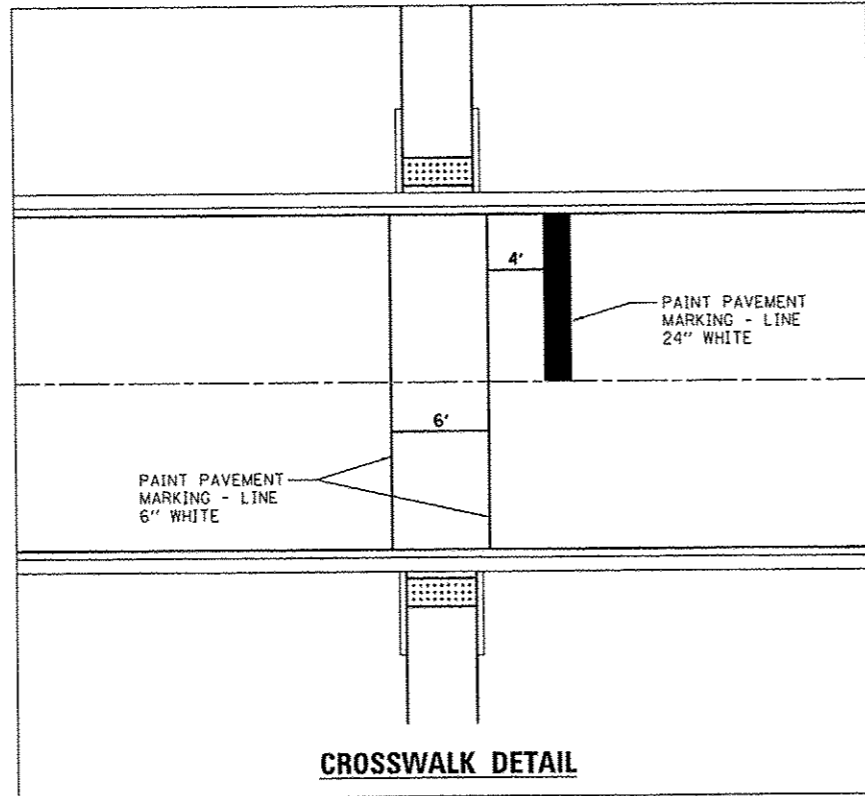
STATE OF ILLINOIS  
DEPARTMENT OF TRANSPORTATION

**SAFE ROUTES TO SCHOOL - ROANOKE, IL  
INTERSECTION DETAILS**

SCALE: 1"=10'    SHEET    OF    SHEETS    STA.    TO    STA.

F.A. RTE.	SECTION	COUNTY	TOTAL SHEETS	SHEET NO.
	12-00012-00-SW	WOODFORD	9	8
			CONTRACT NO. 89648	
ILLINOIS FED. AID PROJ. CT				





**Farnsworth**  
GROUP, INC.  
7707 North Knoxville Avenue, Suite 100  
Peoria, Illinois 61614  
309/689-9888 309/689-0820 fax

USER NAME * #USER#	DESIGNED - JDA	REVIS
	DRAWN - DRR	REVIS
PLOT SCALE * #SCALE#	CHECKED - ERB	REVIS
PLOT DATE * #DATE#	DATE - 05/05/14	REVIS

DESIGNED - JDA	REVIS
DRAWN - DRR	REVIS
CHECKED - ERB	REVIS
DATE - 05/05/14	REVIS

STATE OF ILLINOIS  
DEPARTMENT OF TRANSPORTATION

SAFE ROUTES TO SCHOOL - ROANOKE  
MISCELLANEOUS DETAILS

SCALE: SHEET OF SHEETS STA. TO STA.

F.A. RTE.	SECTION	COUNTY	TOTAL SHEETS	SHEET NO.
	12-00012-00-SW	WOODFORD	9	9
ILLINOIS FED. AID PROJECT			CONTRACT NO. 89648	