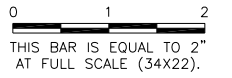


CMI-V-AERL
 CMI 1305902-V-AF2D
 CMI 1305902-C-SPAL
 KEYMAP
 UTILITY_CMI
 CMI PAVEMENT MARKING

UN053

REVISIONS		
NUMBER	BY	DATE

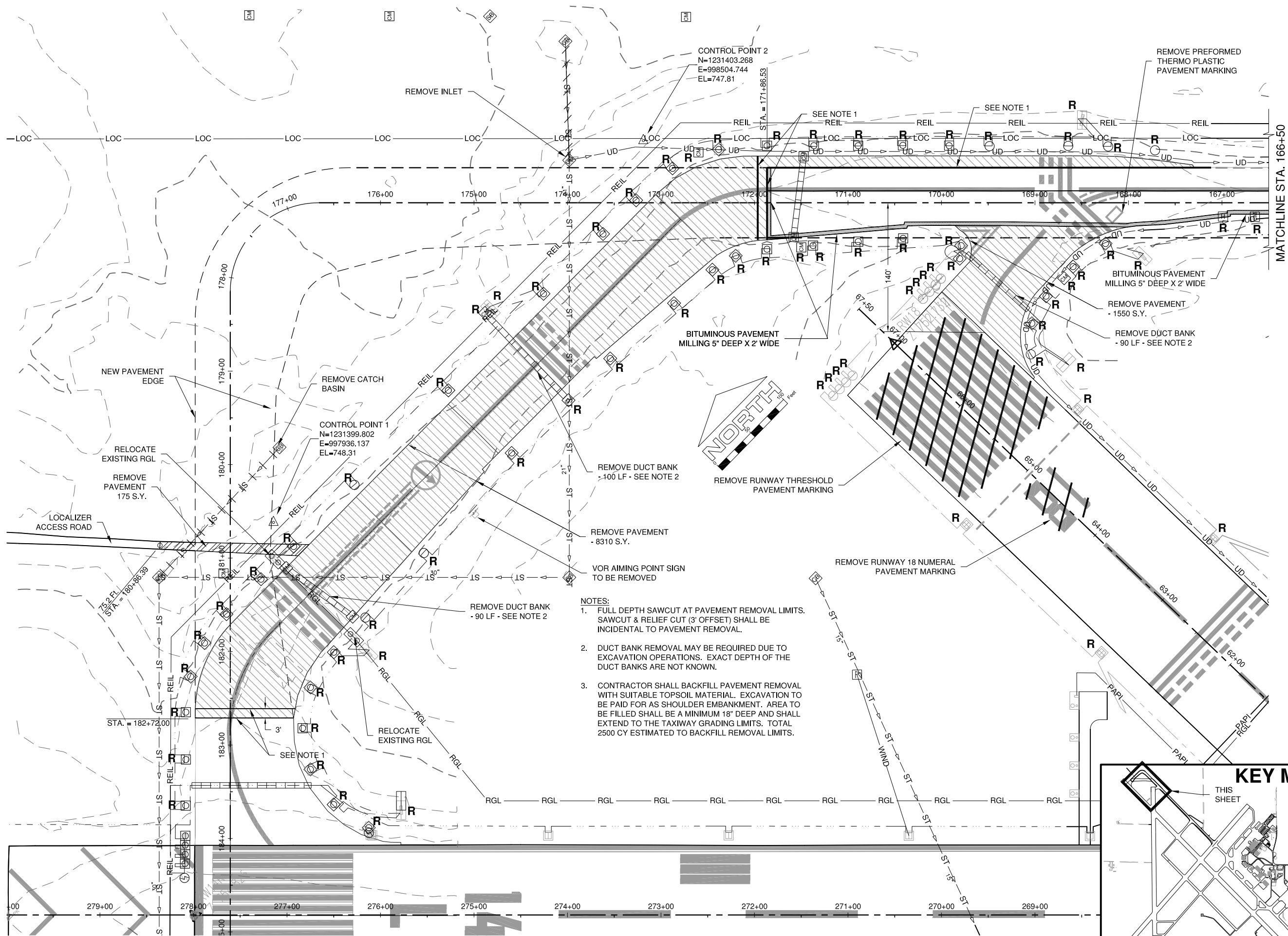


UNIVERSITY OF ILLINOIS
 WILLARD AIRPORT
 SAVOY, ILLINOIS

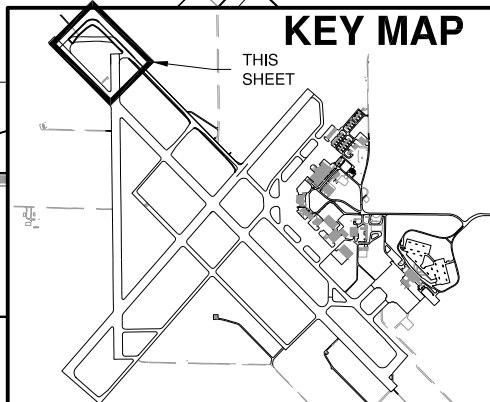
**BASE BID - REALIGN AND WIDEN TAXIWAY C
 EXISTING CONDITIONS AND REMOVALS
 SHEET 1**

© Copyright CMT, Inc.
CMT
 CRAWFORD, MURPHY & TILLY, INC.
 CONSULTING ENGINEERS
 License No. 184-000613

DESIGN BY:	CBG
DRAWN BY:	ADD
CHECKED BY:	CET
APPROVED BY:	CET
DATE:	JUNE 27, 2014
JOB No:	13059-02-00
IL PROJ. NO. CMI-4347 AIP PROJ. NO. 3-17-0016-XX	
SHEET	21 OF 83 SHEETS



- NOTES:**
1. FULL DEPTH SAWCUT AT PAVEMENT REMOVAL LIMITS. SAWCUT & RELIEF CUT (3' OFFSET) SHALL BE INCIDENTAL TO PAVEMENT REMOVAL.
 2. DUCT BANK REMOVAL MAY BE REQUIRED DUE TO EXCAVATION OPERATIONS. EXACT DEPTH OF THE DUCT BANKS ARE NOT KNOWN.
 3. CONTRACTOR SHALL BACKFILL PAVEMENT REMOVAL WITH SUITABLE TOPSOIL MATERIAL. EXCAVATION TO BE PAID FOR AS SHOULDER EMBANKMENT. AREA TO BE FILLED SHALL BE A MINIMUM 18" DEEP AND SHALL EXTEND TO THE TAXIWAY GRADING LIMITS. TOTAL 2500 CY ESTIMATED TO BACKFILL REMOVAL LIMITS.



K:\Champaign\1305902\Draw\Sheets