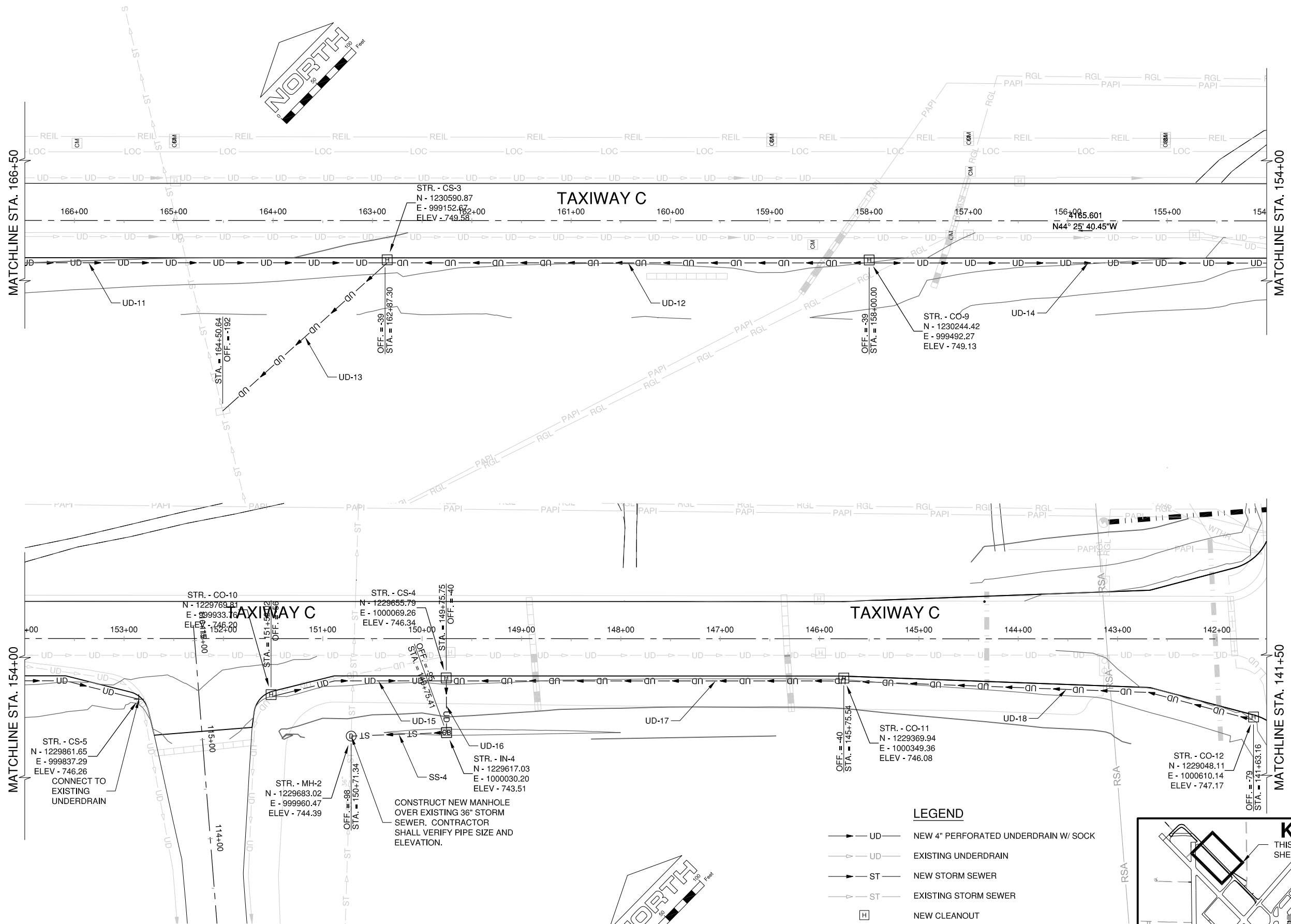
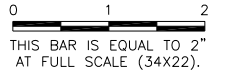


CMI-V-AERL
 CMI 1305902-V-AF2D
 CMI 1305902-C-SPAL
 UTILITY CMI
 KEYMAP
 CMI 1305902-C-UPDR
 CMI 1305902-E-AL

UN053

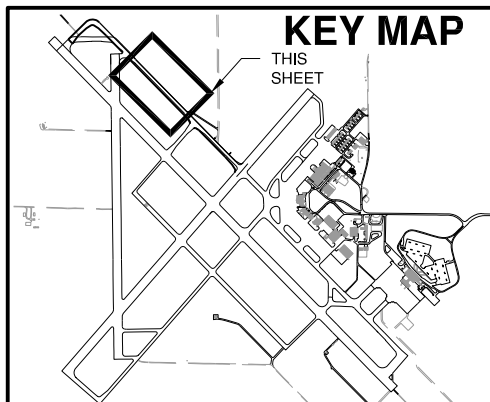
REVISIONS		
NUMBER	BY	DATE



CONSTRUCT NEW MANHOLE OVER EXISTING 36" STORM SEWER. CONTRACTOR SHALL VERIFY PIPE SIZE AND ELEVATION.

LEGEND

- UD — NEW 4" PERFORATED UNDERDRAIN W/ SOCK
- UD — EXISTING UNDERDRAIN
- ST — NEW STORM SEWER
- ST — EXISTING STORM SEWER
- [H] NEW CLEANOUT
- [H] NEW COLLECTION STRUCTURE
- [CB] NEW INLET
- [CB] EXISTING INLET



UNIVERSITY OF ILLINOIS
 WILLARD AIRPORT
 SAVOY, ILLINOIS

**BASE BID - REALIGN AND WIDEN TAXIWAY C
 PROPOSED DRAINAGE IMPROVEMENTS
 SHEET 2**

© Copyright CMT, Inc.
CMT
 CRAWFORD, MURPHY & TILLY, INC.
 CONSULTING ENGINEERS
 License No. 184-000613

DESIGN BY:	CBG
DRAWN BY:	ADD
CHECKED BY:	
APPROVED BY:	
DATE:	JUNE 27, 2014
JOB No:	13059-02-00
IL PROJ. NO.	CMI-4347
AIP PROJ. NO.	3-17-0016-XX
SHEET	35 OF 83 SHEETS