

UN053

REVISIONS		
NUMBER	BY	DATE

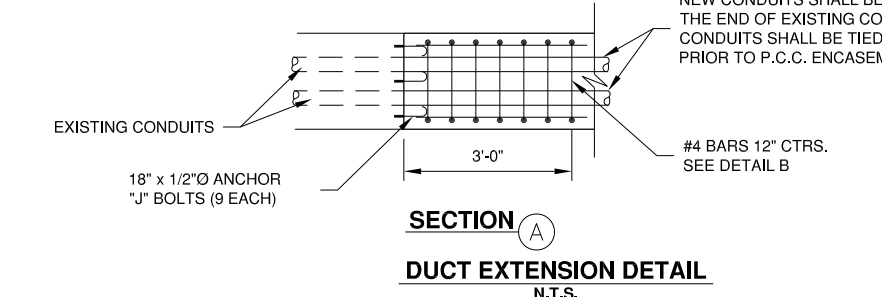
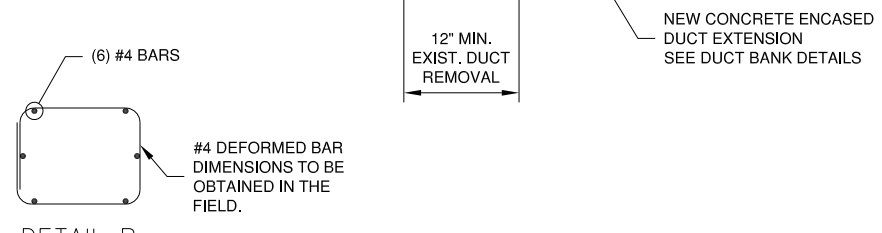
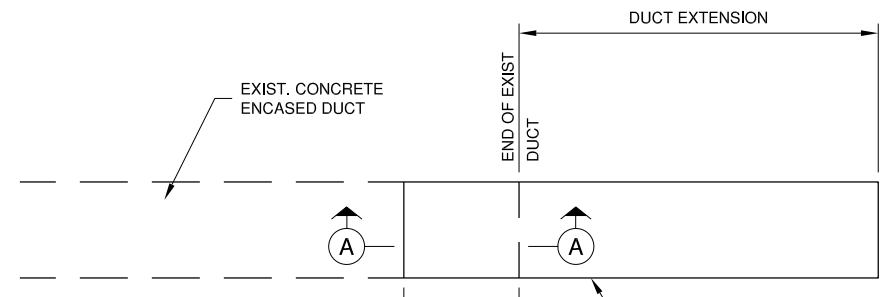
0 1 2
 THIS BAR IS EQUAL TO 2" AT FULL SCALE (34X22).

UNIVERSITY OF ILLINOIS
 WILLARD AIRPORT
 SAVOY, ILLINOIS

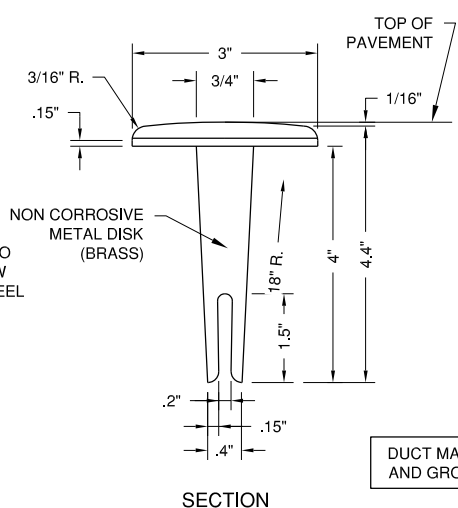
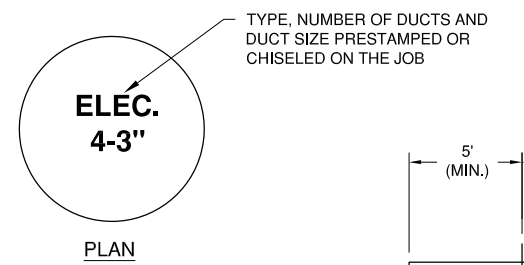
BASE BID - REALIGN AND WIDEN TAXIWAY C
 ELECTRICAL DETAILS 2

© Copyright CMT, Inc.
CMT
 CRAWFORD, MURPHY & TILLY, INC.
 CONSULTING ENGINEERS
 License No. 184-000613

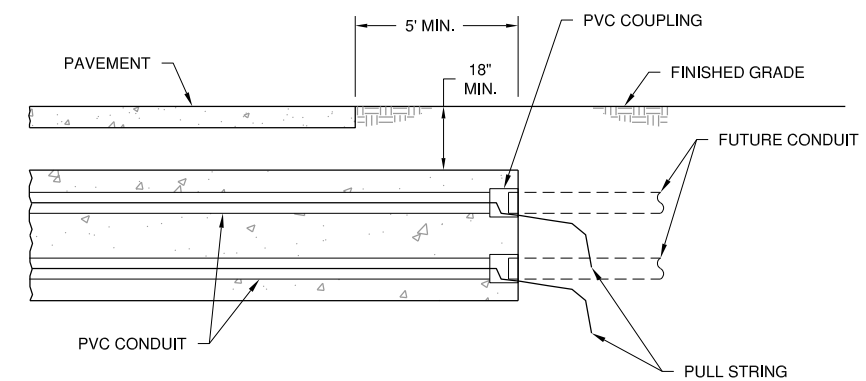
DESIGN BY:	CBG
DRAWN BY:	ADD
CHECKED BY:	CET
APPROVED BY:	CET
DATE:	JUNE 27, 2014
JOB No:	13059-02-00
IL PROJ. NO. CMI-4347 AIP PROJ. NO. 3-17-0016-XX	
SHEET	48 OF 83 SHEETS



NEW DUCT MARKERS SHALL BE INSTALLED AT BOTH EDGES OF PAVEMENT AT ALL NEW DIRECTIONAL BORE, SPLIT DUCT, AND CONCRETE ENCASED DUCT LOCATIONS. THE INSTALLATION OF THE DUCT MARKERS SHALL BE INCIDENTAL TO THE DUCT BEING INSTALLED.



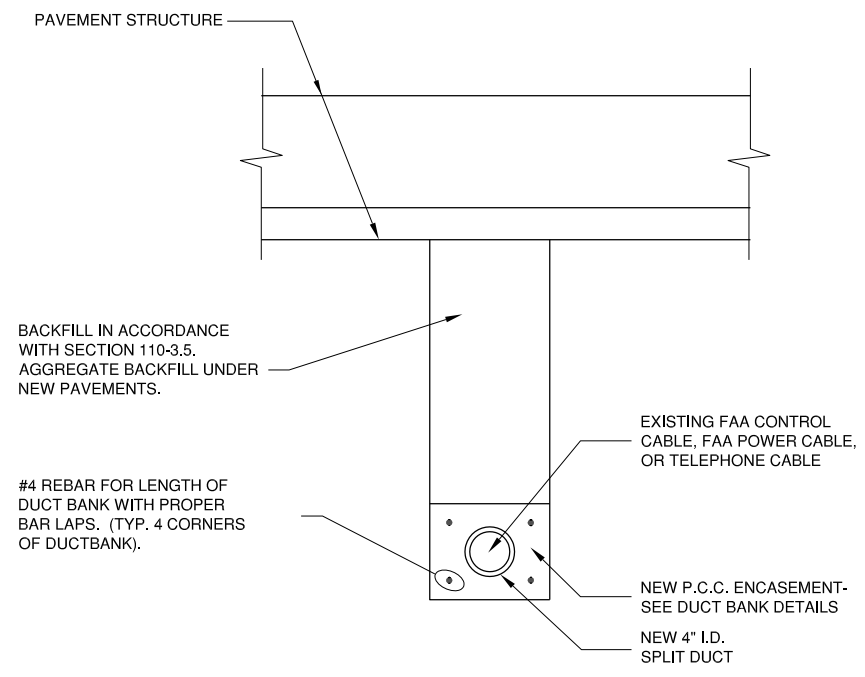
IN PAVEMENT DUCT MARKER DETAIL
 N.T.S.



TYPICAL SECTION
 N.T.S.

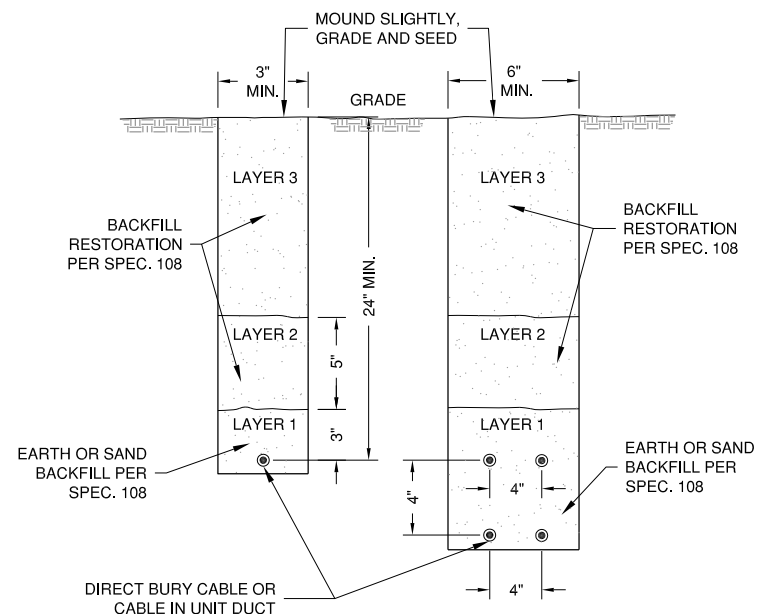
NOTES

- DIMENSIONS SHOWN ARE MINIMUM.
- TOP OF CONCRETE ENCASEMENT SHALL BE NOT LESS THAN 24" BELOW FINISHED SUBGRADE BELOW PAVEMENTS AND NOT LESS THAN 24" BELOW FINISHED GRADE IN UNPAVED AREAS, EXCEPT WHERE DIRECTED OTHERWISE BY ENGINEER. AVOID ALL CONFLICTS WITH OTHER UTILITIES (UNDERDRAINS, WATER LINES, SEWER LINES, TELEPHONE, ELECTRICAL) OR OTHER OBSTACLES, ADJUSTING DEPTH AS NECESSARY.
- CONCRETE SHALL BE ITEM 610.
- CONDUIT FOR CONCRETE ENCASEMENT SHALL BE SCHEDULE 40 PVC, 4" NOMINAL DIAMETER, OR AS INDICATED ON THE PLANS.
- CONCRETE ENCASEMENT SHALL EXTEND A MINIMUM OF 5'-0" BEYOND EDGES OF PAVEMENT, OR AS SHOWN ON THE PLANS OR DIRECTED BY THE RESIDENT ENGINEER.
- #4 REBAR SHALL BE INSTALLED CONTINUOUS THE LENGTH OF THE CONCRETE ENCASEMENT.
- DUCT BANK SHALL BE STACKED NO MORE THAN THREE CONDUITS HIGH UNLESS DIRECTED OTHERWISE BY THE RESIDENT ENGINEER.
- AT ENDS OF DUCT BANKS, INSTALL A PVC COUPLING FLUSH WITH END OF CONCRETE FOR CONNECTING FUTURE CONDUIT. INSTALL POLYETHYLENE PULL STRING, GREENLEE, OR EQUIVALENT. PLUG THE ENDS OF UNUSED SPARE CONDUITS WITH WOODEN PLUGS.
- HIGH VOLTAGE WIRING, RUNWAY & TAXIWAY SERIES CIRCUIT WIRING, ETC., AND POWER WIRING OVER 480V SHALL BE INSTALLED IN SEPARATE CONDUITS FROM LOW VOLTAGE WIRING, 480V OR LESS.
- IF POSSIBLE, INSTALL FIBER OPTIC CABLES AND COMMUNICATION CABLES (FAA, ETC.) IN THEIR OWN CONDUITS; OTHERWISE, INSTALL THEM IN THE CONDUITS WITH LOW VOLTAGE WIRING.



1. CONTRACTOR SHALL CUT THE #6 BARE COPPER WIRE AT EACH END OF THE NEW DUCT AND EXOTHERMICALLY WELD THE WIRE TO A 3/4" DIA. x 10' LONG GROUND ROD. THIS COST SHALL BE INCIDENTAL TO THE SPLIT DUCT INSTALLATION.

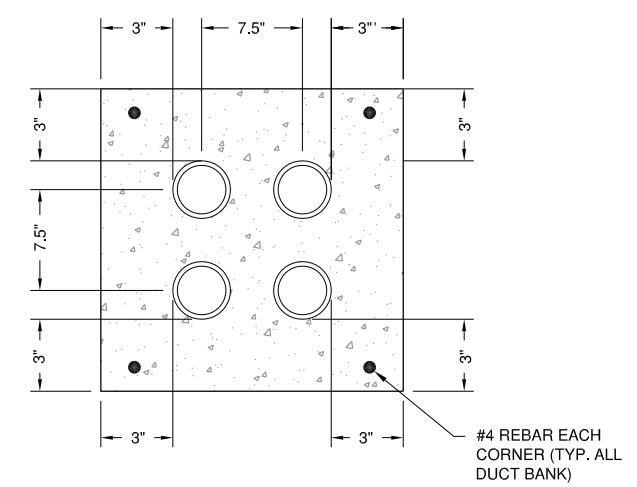
SPLIT DUCT DETAIL
 N.T.S.



NOTES:

- CABLES SHALL NOT BE PLACED LESS THAN 24" DEEP IN ANY ONE TRENCH UNLESS PERMITTED BY ENGINEER.
- WHERE PERMITTED, CONTRACTOR MAY INSTALL CABLE IN UNIT DUCT BY PLOWING METHOD.

CABLE TRENCH DETAIL
 N.T.S.



4-WAY DUCT BANK DETAIL
 N.T.S.

K:\Champaign\1305902\Draw\Sheets