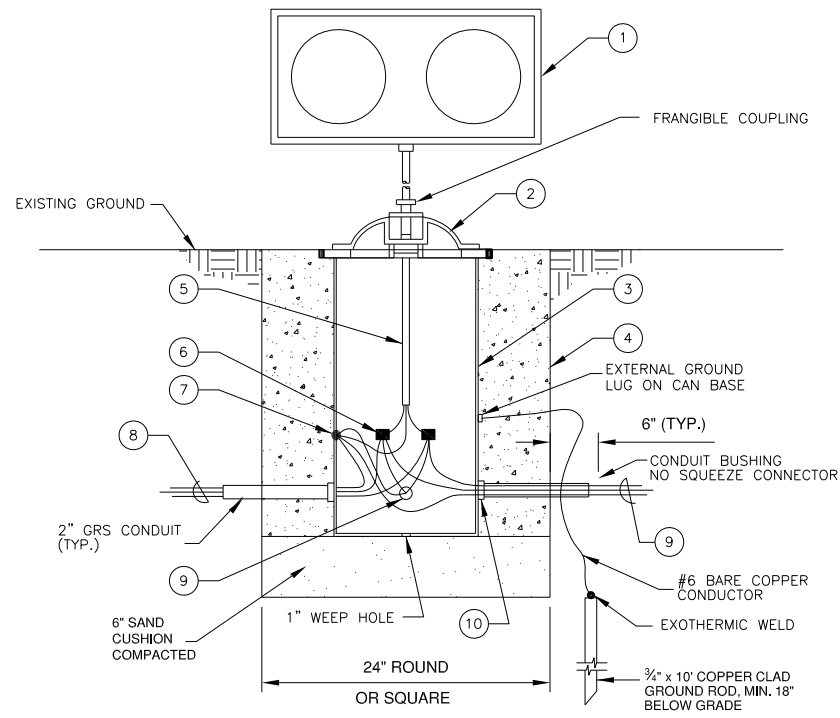
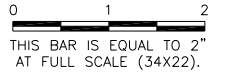


UN053

REVISIONS		
NUMBER	BY	DATE

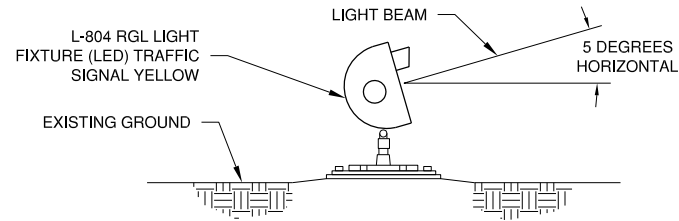


**NEW RUNWAY GUARD LIGHT INSTALLATION
 (VOLTAGE POWERED)**

N.T.S.

NOTES:

- 1 L-804 RUNWAY GUARD LIGHT (RGL), MODE 2 (240V) WITH PHOTOCCELL, NOT MONITORED, 100W/6.6A INCANDESCENT LAMPS, TRAFFIC SIGNAL YELLOW.
- 2 SPECIAL BASE PLATE, SUPPLIED WITH RUNWAY GUARD LIGHT.
- 3 L-867B LIGHT BASE.
- 4 CONCRETE.
- 5 CONNECTOR AND PIGTAIL, SUPPLIED WITH RUNWAY GUARD LIGHT.
- 6 WATERPROOF TAPED SPLIT BOLT SPLICE (TYP. OF TWO).
- 7 LIGHT BASE GROUND TERMINAL. CONNECT ALL GROUND WIRES TO HERE.
- 8 TWO #2 OR TWO #4 USE (240V), ONE #8 GROUND IN 1" UNIT DUCT, TO VAULT OR TO NEXT PAIR OF RUNWAY GUARD LIGHTS. SEE SITE PLAN FOR ADDITIONAL INFORMATION.
- 9 TWO #12 USE (240V), ONE #12 GROUND, TO RUNWAY GUARD LIGHT ON OPPOSITE SIDE OF TAXIWAY. INCIDENTAL TO INSTALLATION OF RUNWAY GUARD LIGHTS.
- 10 PLUG ENTRANCES FROM INSIDE WITH DUCT SEAL.



**L-804 RUNWAY GUARD LIGHT
 HORIZONTAL AIMING DETAIL**

NOTE

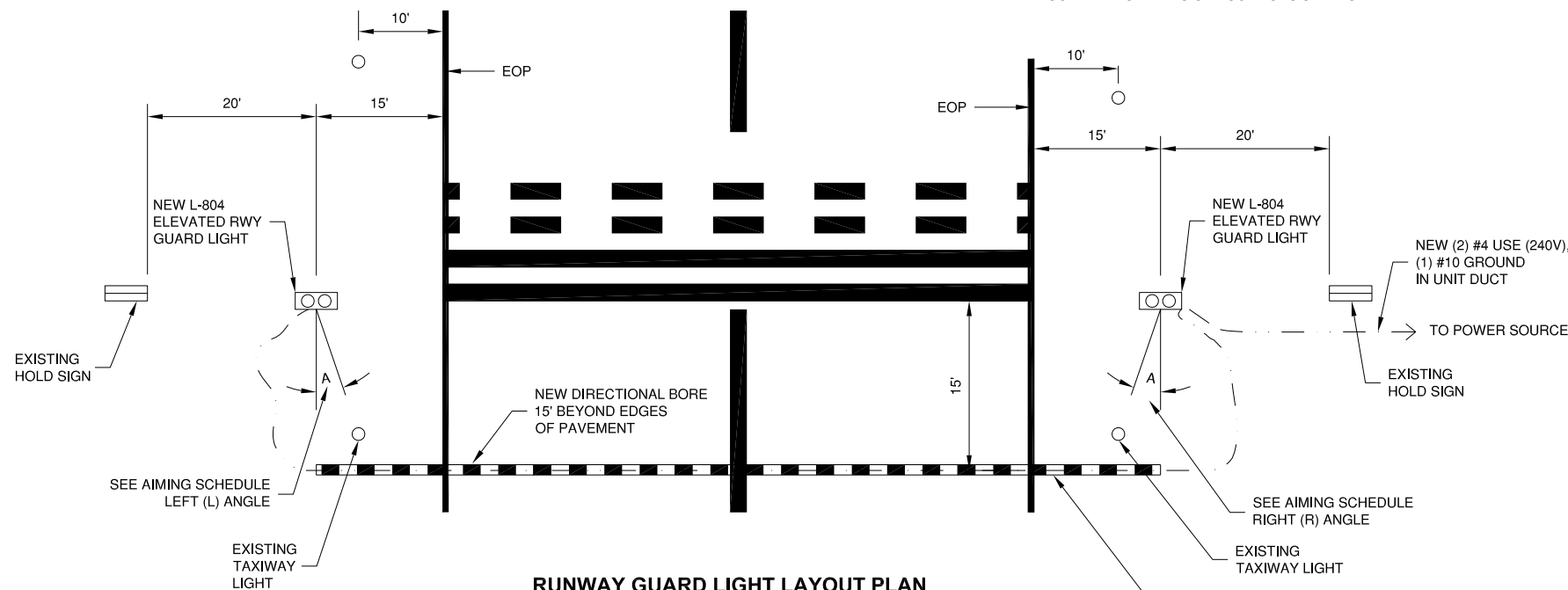
CONTRACTOR SHALL AIM THE RGL UNITS 5 DEGREES UPWARD PER MANUFACTURER'S INSTRUCTIONS.

**L-804 RUNWAY GUARD LIGHT INSTALLATION DETAILS
 BASE MOUNTED, 6.6 AMP SERIES CIRCUIT**

RUNWAY GUARD LIGHT AIMING SCHEDULE			
PAIR NUMBER	L	A	R
1	23.3°	16.7°	5°
2	18.2°	18.2°	5°
3	14.4°	14.4°	5°
4	10.5°	10.5°	5°
5	10.5°	10.5°	5°
6	16.7°	16.7°	5°
7	10.5°	10.5°	5°
8	10.5°	10.5°	5°

NOTES:

1. A IS ANGLE UNIT SHOULD BE AIMED TOWARD TAXIWAY CENTERLINE AND IS SYMMETRICAL ABOUT THE TAXIWAY CENTERLINE.
2. B IS ANGLE UNIT SHOULD BE AIMED UPWARD FROM THE HORIZONTAL AND IS THE SAME FOR EACH UNIT IN EVERY PAIR OF RUNWAY GUARD LIGHTS.
3. LEFT (L) AND RIGHT (R) ARE DESIGNATED BY LOOKING TOWARD THE RUNWAY FROM THE HOLD SIDE OF THE HOLD LINE.
4. PAIR NUMBER IS DESIGNATED ON PROPOSED LIGHTING LAYOUT AND RGL AND SIGN LOCATIONS SHEETS.



RUNWAY GUARD LIGHT LAYOUT PLAN

N.T.S.

NOTES:

1. LOCATION OF DIRECTIONAL BORE MAY VARY TO AVOID EXISTING UTILITIES.
2. ANGLE 'A' - SEE AIMING SCHEDULE.

**UNIVERSITY OF ILLINOIS
 WILLARD AIRPORT
 SAVOY, ILLINOIS**

**BASE BID - REALIGN AND WIDEN TAXIWAY C
 ELECTRICAL DETAILS 5**

© Copyright CMT, Inc.
CMT
 CRAWFORD, MURPHY & TILLY, INC.
 CONSULTING ENGINEERS
 License No. 184-000613

DESIGN BY:	CBG
DRAWN BY:	ADD
CHECKED BY:	CET
APPROVED BY:	CET
DATE:	JUNE 27, 2014
JOB No:	13059-02-00

IL PROJ. NO. CMI-4347
 AIP PROJ. NO. 3-17-0016-XX