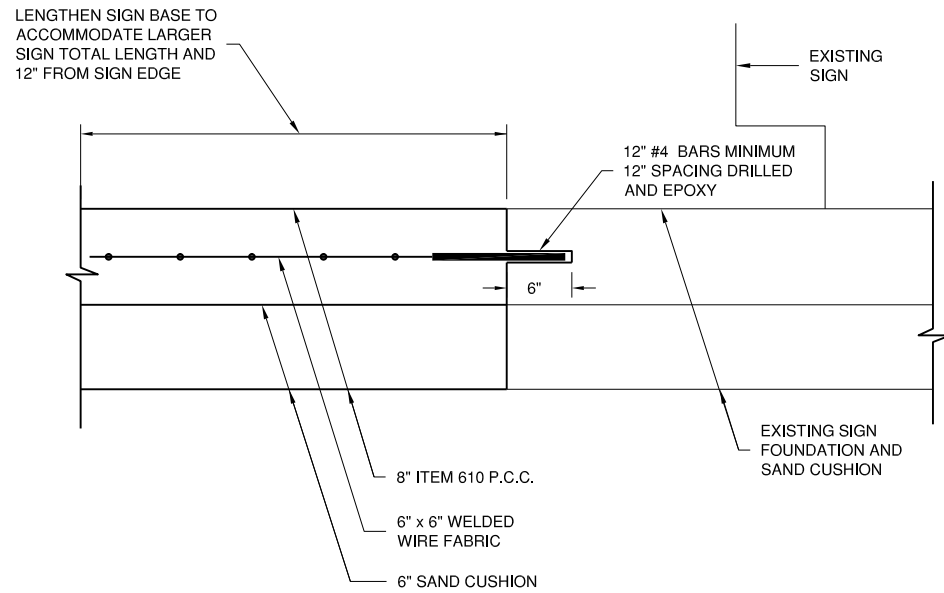
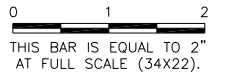
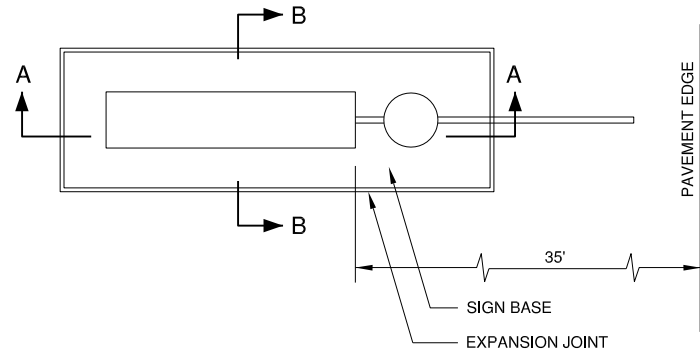


UN053

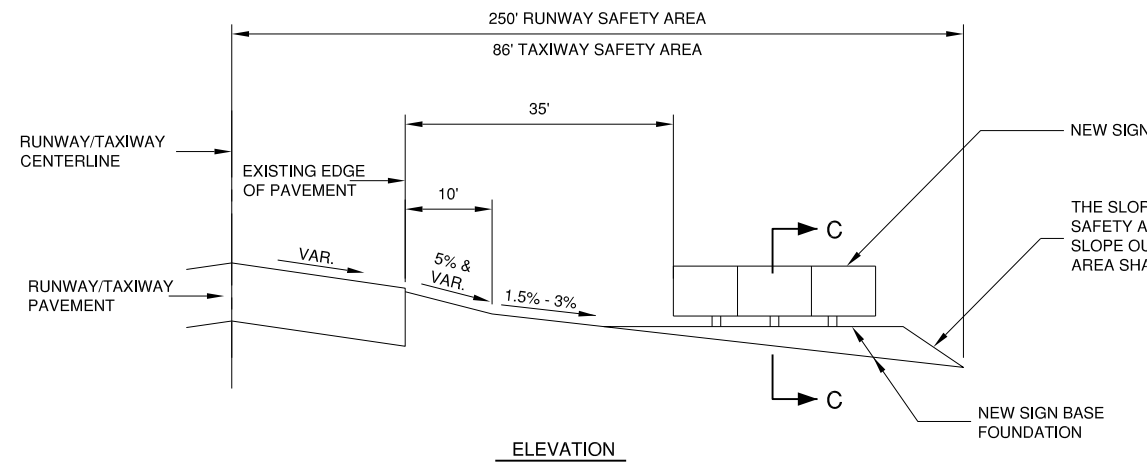
REVISIONS		
NUMBER	BY	DATE



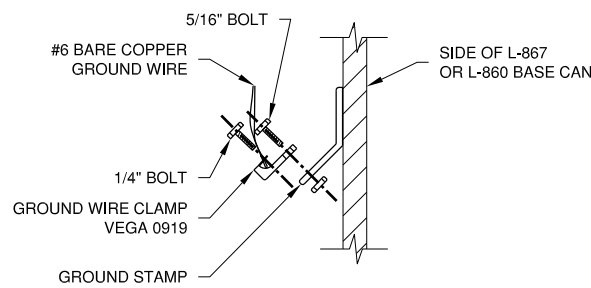
SIGN PAD EXTENSION DETAIL



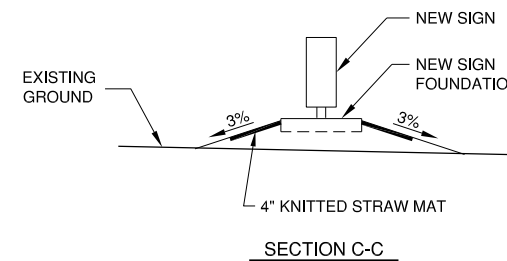
PLAN



ELEVATION



**FACTORY GROUND LUG DETAIL
N.T.S.**



**L-858 AIRFIELD SIGN DETAILS
N.T.S.**

NOTES:

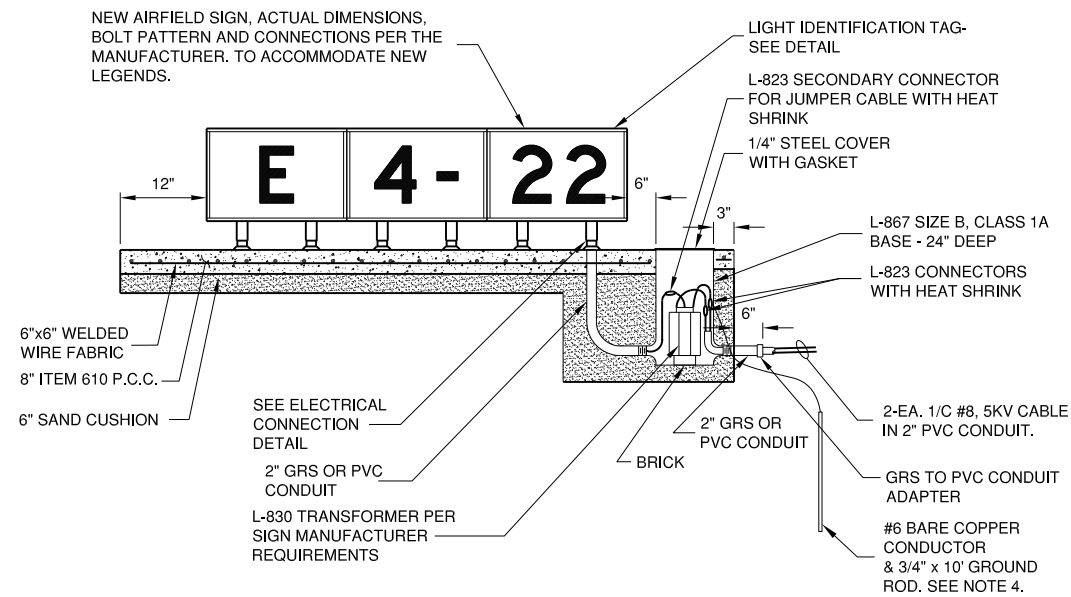
- SLOPES SHOWN ARE FROM FAA STANDARDS AND MAY NOT REFLECT THE ACTUAL GRADES IN THE FIELD
- ESTIMATED 1 C.Y. OF EMBANKMENT MAY BE REQUIRED TO CONSTRUCT SIGN BASE FOUNDATION. COSTS TO CONSTRUCT SHALL BE INCIDENTAL TO SIGN PAY ITEM.
- ACTUAL LOCATION OF THE SIGN WITHIN THE TAXIWAY SAFETY AREA WILL VARY DUE TO PAVEMENT WIDTHS AND VARIANCES IN SIGN FOUNDATION LENGTHS.
- 4" OF KNITTED STRAW MAT SHALL BE PLACED AROUND THE PROTECTION APRON. COST FOR MAT SHALL BE INCIDENTAL TO SIGN PAY ITEM.

AIRFIELD SIGN NOTES

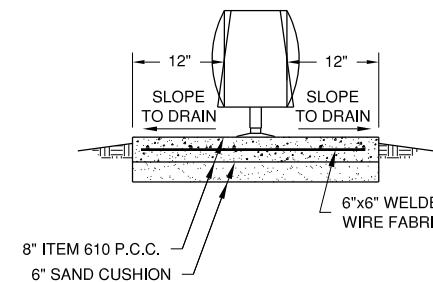
- TRANSFORMER WATTAGE SHALL BE AS REQUIRED BY SIGN MANUFACTURER.
- SIGN LEGEND SHALL BE AS SHOWN IN THE PLANS.
- SIGNS SHALL BE SIZE 2, STYLE 2 OR 3, CLASS 2.
- SEE "NEW BASE MOUNTED EDGE LIGHT" DETAIL FOR GROUNDING DETAILS.
- LIGHT I.D. TAG FOR SIGN SHALL INCLUDE SIGN DESIGNATOR SHOWN IN THE PLAN TABLES.

NOTES

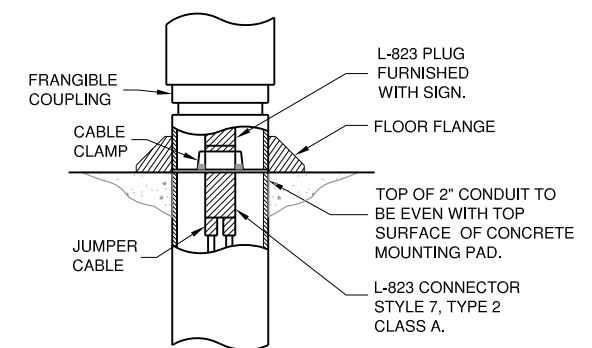
- SIGN SCHEDULE IS SUBJECT TO FAA APPROVAL OF THE SIGNAGE PLAN.
- CHANGES TO NEW LEGENDS MAY OCCUR SUBJECT TO 1 ABOVE.
- CONTRACTOR SHALL SUBMIT SHOP DRAWINGS WITH NEW LEGENDS FOR APPROVAL PRIOR TO STARTING MANUFACTURE.



SECTION A-A



SECTION B-B



ELECTRICAL CONNECTION DETAIL

**L-858 AIRFIELD SIGN DETAILS
N.T.S.**

UNIVERSITY OF ILLINOIS
 WILLARD AIRPORT
 SAVOY, ILLINOIS

**BASE BID - REALIGN AND WIDEN TAXIWAY C
 ELECTRICAL DETAILS 6**

© Copyright CMT, Inc.
CMT
 CRAWFORD, MURPHY & TILLY, INC.
 CONSULTING ENGINEERS
 License No. 184-000613

DESIGN BY:	CBG
DRAWN BY:	ADD
CHECKED BY:	CET
APPROVED BY:	CET
DATE:	JUNE 27, 2014
JOB No:	13059-02-00
IL PROJ. NO.	CMI-4347
AIP PROJ. NO.	3-17-0016-XX
SHEET	52 OF 83 SHEETS