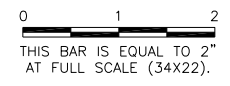


UN053

REVISIONS		
NUMBER	BY	DATE



**UNIVERSITY OF ILLINOIS
 WILLARD AIRPORT
 SAVOY, ILLINOIS**

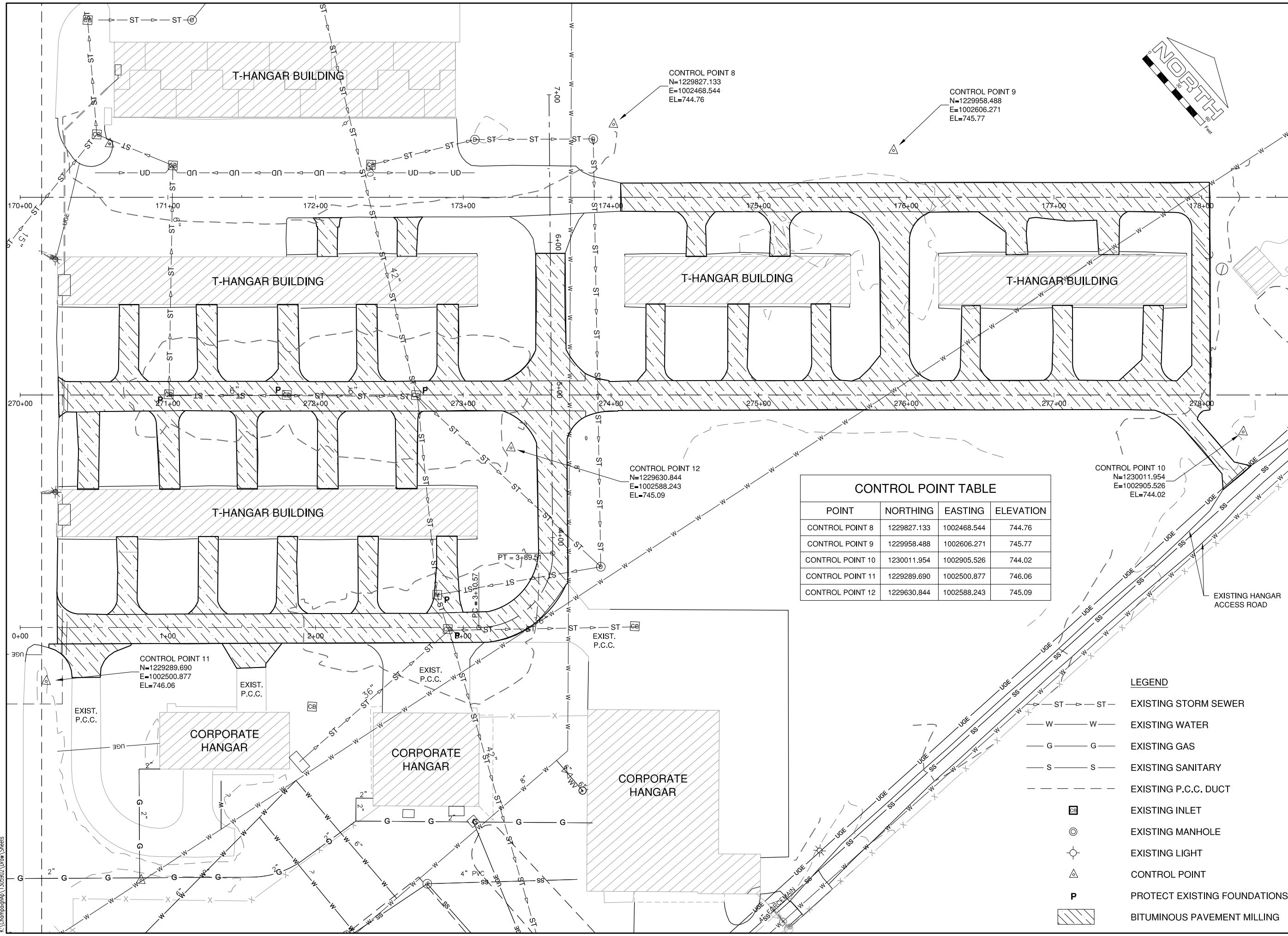
BASE BID - REALIGN AND WIDEN TAXIWAY C

ADDITIVE ALTERNATE - EXISTING CONDITIONS

© Copyright CMT, Inc.

CMT
 CRAWFORD, MURPHY & TILLY, INC.
 CONSULTING ENGINEERS
 License No. 184-000613

DESIGN BY:	CBG
DRAWN BY:	ADD
CHECKED BY:	CET
APPROVED BY:	CET
DATE:	JUNE 27, 2014
JOB No:	13059-02-00
IL. PROJ. NO. CMI-4347 AIP PROJ. NO. 3-17-0016-XX	
SHEET 69 OF 83 SHEETS	



CONTROL POINT 8
 N=1229827.133
 E=1002468.544
 EL=744.76

CONTROL POINT 9
 N=1229958.488
 E=1002606.271
 EL=745.77

CONTROL POINT 12
 N=1229630.844
 E=1002588.243
 EL=745.09

CONTROL POINT 10
 N=1230011.954
 E=1002905.526
 EL=744.02

CONTROL POINT 11
 N=1229289.690
 E=1002500.877
 EL=746.06

POINT	NORTHING	EASTING	ELEVATION
CONTROL POINT 8	1229827.133	1002468.544	744.76
CONTROL POINT 9	1229958.488	1002606.271	745.77
CONTROL POINT 10	1230011.954	1002905.526	744.02
CONTROL POINT 11	1229289.690	1002500.877	746.06
CONTROL POINT 12	1229630.844	1002588.243	745.09

LEGEND

- ST ST EXISTING STORM SEWER
- W W EXISTING WATER
- G G EXISTING GAS
- S S EXISTING SANITARY
- - - EXISTING P.C.C. DUCT
- CB EXISTING INLET
- ⊙ EXISTING MANHOLE
- ⊙ EXISTING LIGHT
- △ CONTROL POINT
- P PROTECT EXISTING FOUNDATIONS
- ▨ BITUMINOUS PAVEMENT MILLING

K:\Champaign\1305902\Draw\Sheets