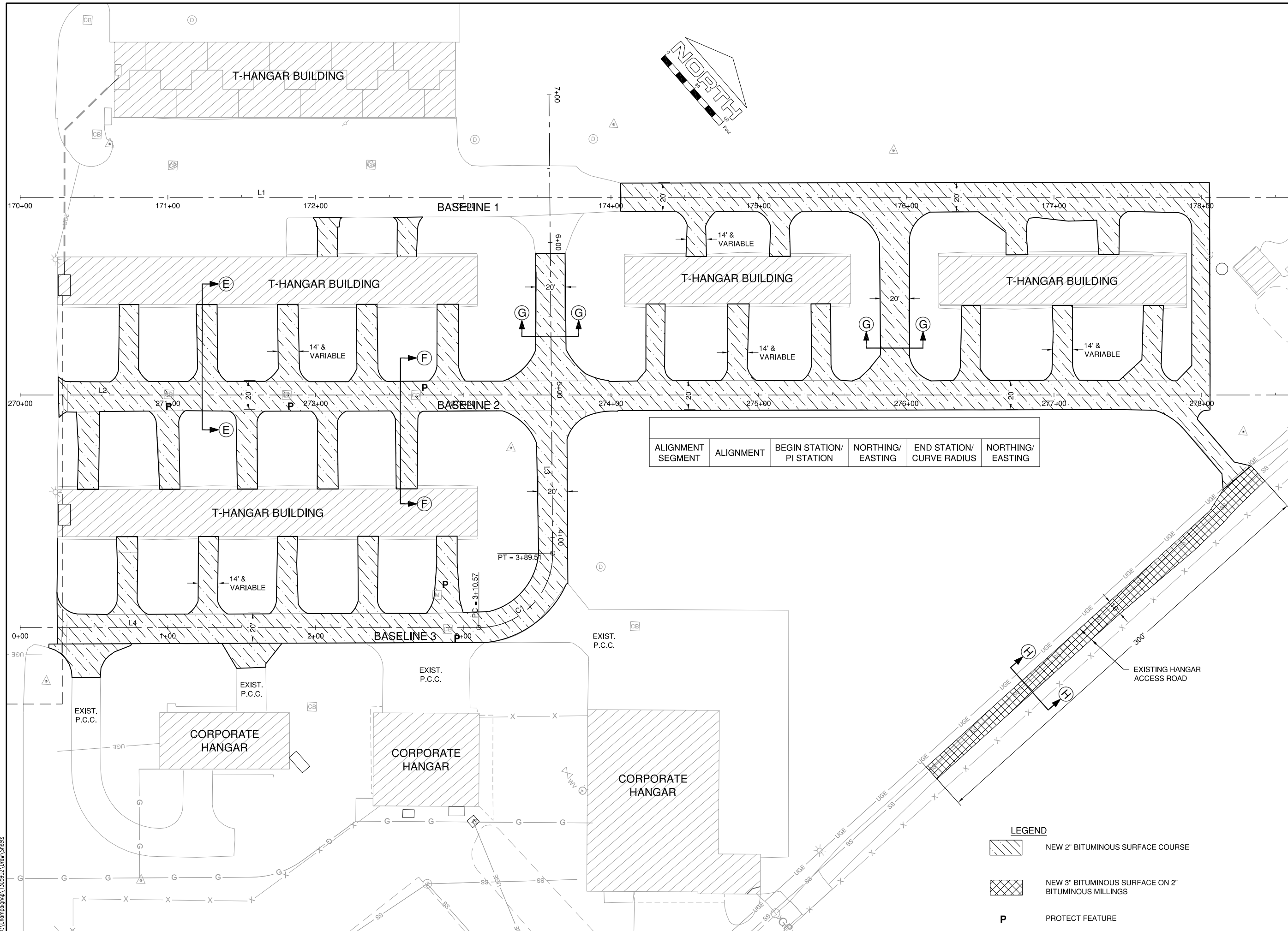


UN053

REVISIONS		
NUMBER	BY	DATE

0 1 2
 THIS BAR IS EQUAL TO 2"
 AT FULL SCALE (34X22).



ALIGNMENT SEGMENT	ALIGNMENT	BEGIN STATION/ PI STATION	NORTHING/ EASTING	END STATION/ CURVE RADIUS	NORTHING/ EASTING

LEGEND

- NEW 2" BITUMINOUS SURFACE COURSE
- NEW 3" BITUMINOUS SURFACE ON 2" BITUMINOUS MILLINGS
- P** PROTECT FEATURE

**UNIVERSITY OF ILLINOIS
 WILLARD AIRPORT
 SAVOY, ILLINOIS**

**BASE BID - REALIGN AND WIDEN TAXIWAY C
 ADDITIVE ALTERNATE - PROPOSED
 IMPROVEMENTS**

GMT
 CRAWFORD, MURPHY & TILLY, INC.
 CONSULTING ENGINEERS
 License No. 184-000613

DESIGN BY:	CBG
DRAWN BY:	ADD
CHECKED BY:	CET
APPROVED BY:	CET
DATE:	JUNE 27, 2014
JOB No:	13059-02-00
IL PROJ. NO.	CMI-4347
AIP PROJ. NO.	3-17-0016-XX
SHEET	70 OF 83 SHEETS

K:\Champaign\1305902\Draw\Sheets