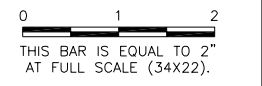


UN053

REVISIONS		
NUMBER	BY	DATE

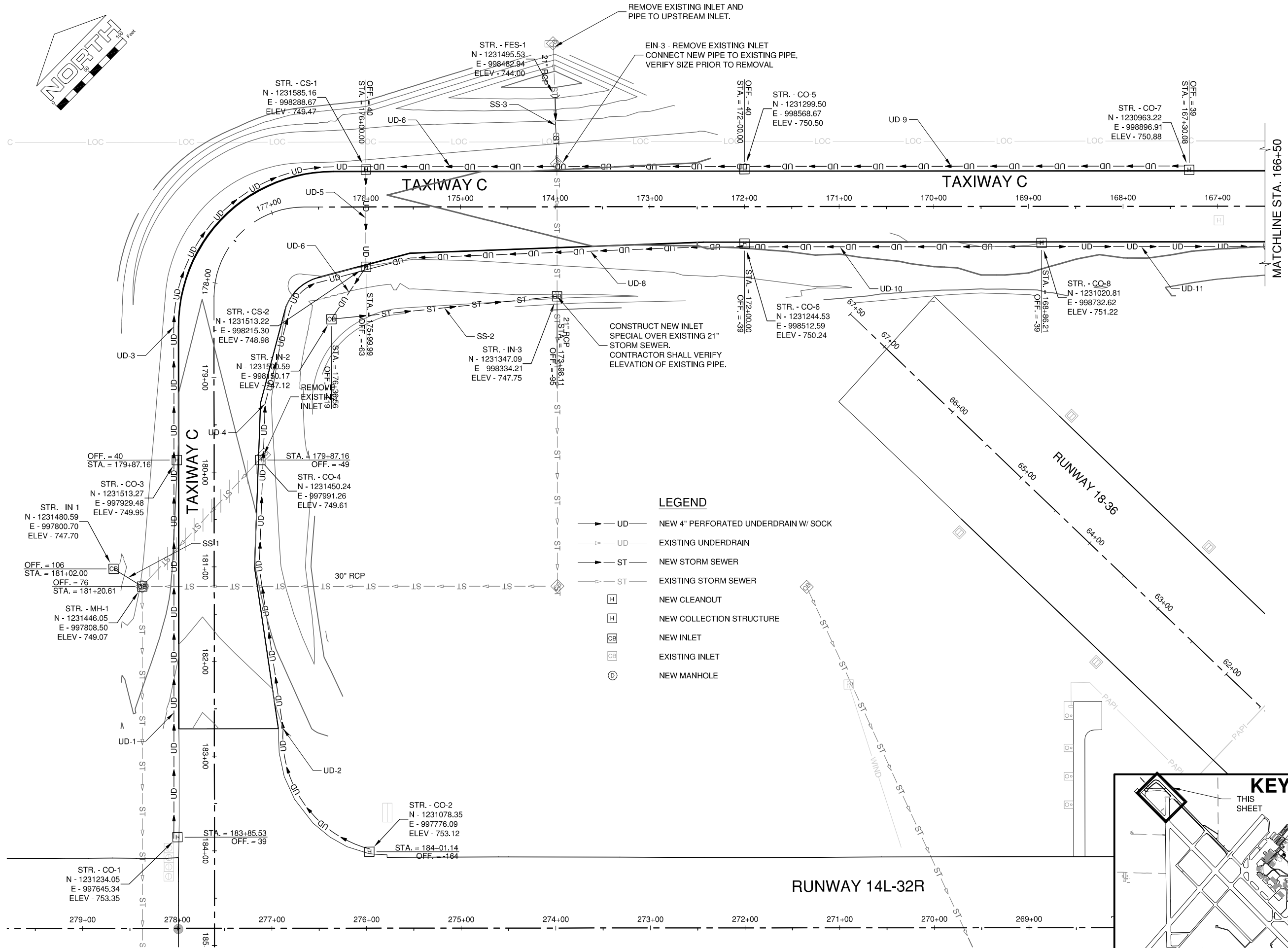
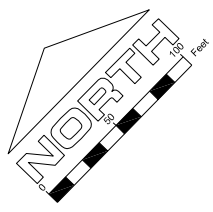


UNIVERSITY OF ILLINOIS
 WILLARD AIRPORT
 SAVOY, ILLINOIS

**BASE BID - REALIGN AND WIDEN TAXIWAY C
 PROPOSED DRAINAGE IMPROVEMENTS
 SHEET 1- ADDENDUM**

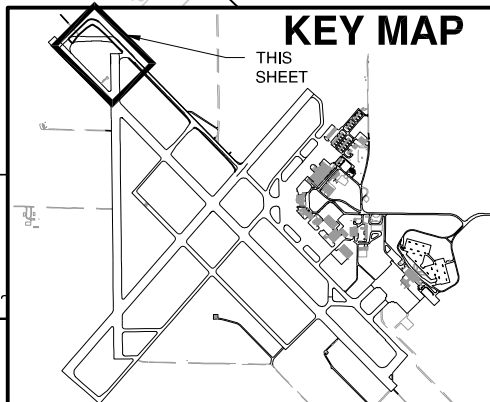
© Copyright CMT, Inc.
CMT
 CRAWFORD, MURPHY & TILLY, INC.
 CONSULTING ENGINEERS
 License No. 184-000613

DESIGN BY:	CBG
DRAWN BY:	ADD
CHECKED BY:	CET
APPROVED BY:	CET
DATE:	JUNE 27, 2014
JOB No:	13059-02-00
IL PROJ. NO. CMI-4347 AIP PROJ. NO. 3-17-0016-XX	
SHEET 34A OF 83 SHEETS	



LEGEND

	NEW 4" PERFORATED UNDERDRAIN W/ SOCK
	EXISTING UNDERDRAIN
	NEW STORM SEWER
	EXISTING STORM SEWER
	NEW CLEANOUT
	NEW COLLECTION STRUCTURE
	NEW INLET
	EXISTING INLET
	NEW MANHOLE

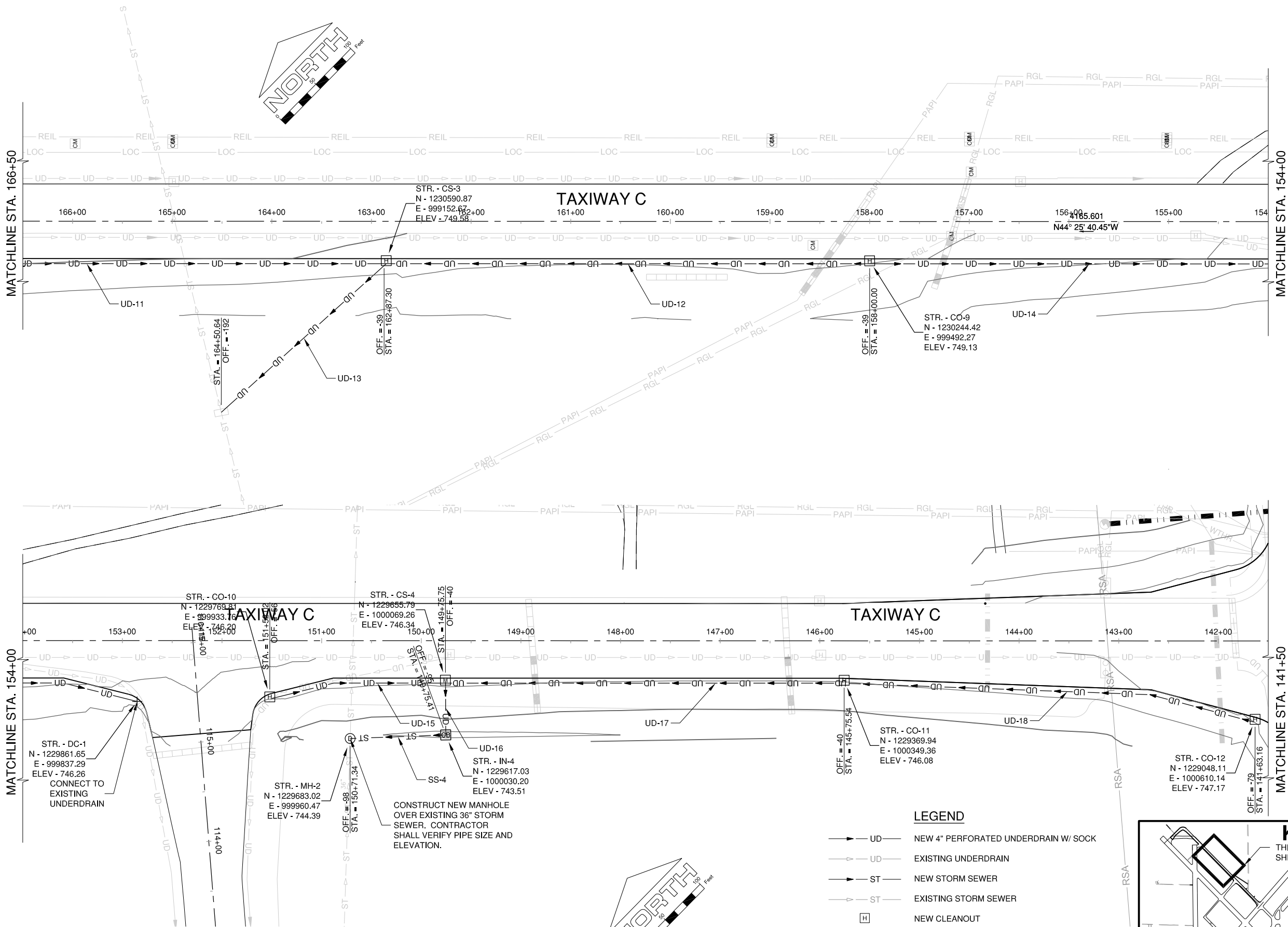
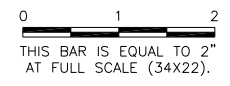


K:\Champaign\1305902\Draw\Sheets

CMI-V-AERL
 CMI 1305902-V-AF2D
 CMI 1305902-C-SPAL
 UTILITY CMI
 KEYMAP
 CMI 1305902-C-UPDR
 CMI 1305902-E-AL

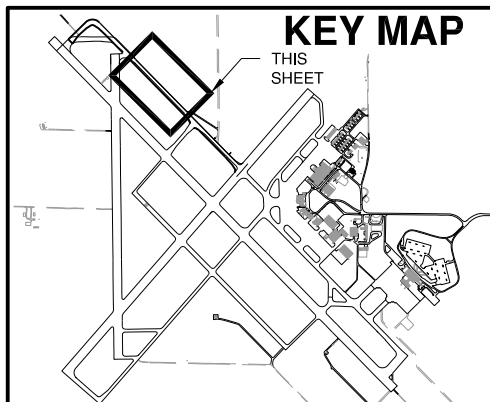
UN053

REVISIONS		
NUMBER	BY	DATE



LEGEND

- UD — NEW 4" PERFORATED UNDERDRAIN W/ SOCK
- UD — EXISTING UNDERDRAIN
- ST — NEW STORM SEWER
- ST — EXISTING STORM SEWER
- [H] NEW CLEANOUT
- [H] NEW COLLECTION STRUCTURE
- [CB] NEW INLET
- [CB] EXISTING INLET



UNIVERSITY OF ILLINOIS
 WILLARD AIRPORT
 SAVOY, ILLINOIS

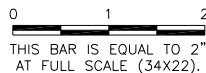
**BASE BID - REALIGN AND WIDEN TAXIWAY C
 PROPOSED DRAINAGE IMPROVEMENTS
 SHEET 2 - ADDENDUM**

CMT
 CRAWFORD, MURPHY & TILLY, INC.
 CONSULTING ENGINEERS
 License No. 184-000613


DESIGN BY:	CBG
DRAWN BY:	ADD
CHECKED BY:	
APPROVED BY:	
DATE:	JUNE 27, 2014
JOB No:	13059-02-00
IL PROJ. NO.	CMI-4347
AIP PROJ. NO.	3-17-0016-XX
SHEET	35A OF 83 SHEETS

UN053

REVISIONS		
NUMBER	BY	DATE



UNIVERSITY OF ILLINOIS
 WILLARD AIRPORT
 SAVOY, ILLINOIS
 BASE BID - REALIGN AND WIDEN TAXIWAY C
 DRAINAGE TABLES - ADDENDUM

© Copyright CMT, Inc.

CMT
 CRAWFORD, MURPHY & TILLY, INC.
 CONSULTING ENGINEERS
 License No. 184-000613

DESIGN BY:	CBG
DRAWN BY:	ADD
CHECKED BY:	CET
APPROVED BY:	CET
DATE:	JUNE 27, 2014
JOB No:	13059-02-00
IL PROJ. NO. CMI-4347 AIP PROJ. NO. 3-17-0016-XX	
SHEET 36A OF 83 SHEETS	

STRUCTURE	RIM	INVERT	STATION	OFFSET	PIPE IN	PIPE OUT	NOTES
CO-1	753.35	750.35	183+81.92	40' RT		UD-1	AR705640
CO-2	753.12	750.12	184+01.14	164' LT		UD-2	AR705640
CO-3	749.95	746.95	179+87.16	40' RT	UD-1	UD-3	AR705640
CO-4	749.61	746.61	179+87.16	49' LT	UD-2	UD-4	AR705640
CO-5	750.5	746.5	172+00	40' RT	UD-9	UD-7	AR705640
CO-6	750.24	747.24	172+00	39' LT	UD-10	UD-8	AR705640
CO-7	750.88	747.88	167+30.08	39' RT		UD-9	AR705640
CO-8	751.22	748.22	168+86.21	39' LT		UD-10/UD-11	AR705640
CO-9	749.13	746.13	158+00	39' LT		UD-12/UD-14	AR705640
CO-10	746.2	743.28	151.53.55	53' LT		UD-15	AR705640
CO-11	746.08	742.75	145+75.54	40' LT	UD-18	UD-17	AR705640
CO-12	747.17	743.75	141+63.16	79' LT		UD-18	AR705640
CS-1	749.47	744.7	176+00	39' RT	UD-3/UD-7	UD-5	AR705635
CS-2	748.98	744.3	176+00	63' LT	UD-5	UD-6	AR705635
CS-3	749.58	745	162+85.14	39' LT	UD-11/UD-12	UD-13	AR705635
CS-4	746.34	741.5	149+75.69	40' LT	UD-15/UD-17	UD-14	AR705635
DC-1	746.25	743.25	152+85.14	53' LT	UD-14	EXIST	INCIDENTAL

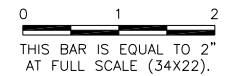
STRUCTURE	RIM	INVERT	STATION	OFFSET	PIPE IN	PIPE OUT	NOTES
IN-1	747.7	743.7	181+02	106' RT		SS-1	AR751410
IN-2	747.125	744.42	176+36.56	119' LT		SS-2/UD-6	AR751410
IN-3	747.75	743.7	173+98.11	95' RT	SS-2	EXIST	AR751415
IN-4	743.51	741.01	149+49.35	95' LT	UD-16	SS-4	AR751410
MH-1	749.07	743.53	181+20.61	76' RT	SS-1	Exist	AR751550
MH-2	744.39	740.5	150+71.34	98' LT	SS-4	EXIST	AR751550
FES-1	744	744	174+00	115' RT		SS-3	AR752421
EIN-3	746.67	743.62	174+00	45' RT	SS-3	EXIST	REMOVE STRUCTURE
EIN-5		744.5	164+50.64	192' LT	UD-13		EXISTING STRUCTURE

PIPE	MATERIAL	UP STR	DOWN STR	UP INV	DOWN INV	LENGTH	SLOPE	NOTES
UD-1	4" Perforated	CO-1	CO-3	750.35	746.95	400	0.85%	AR705524
UD-2	4" Perforated	CO-2	CO-4	750.12	746.61	455	0.77%	AR705524
UD-3	4" Perforated	CO-3	CS-1	746.95	744.7	440	0.51%	AR705524
UD-4	4" Perforated	CO-4	CS-2	746.61	744.3	258	0.90%	AR705524
UD-5	4" PVC	CS-1	CS-2	744.7	744.3	108	0.37%	AR705544
UD-6	4" PVC	CS-2	IN-2	744.3	743.7	66	0.91%	AR705544
UD-7	4" Perforated	CO-5	CS-1	746.5	744.7	400	0.45%	AR705524
UD-8	4" Perforated	CO-6	CS-2	747.24	744.3	401	0.73%	AR705524
UD-9	4" Perforated	CO-7	CO-5	747.88	746.5	470	0.29%	AR705524
UD-10	4" Perforated	CO-8	CO-6	748.22	747.24	314	0.31%	AR705524
UD-11	4" Perforated	CO-8	CS-3	748.22	745	601	0.54%	AR705524
UD-12	4" Perforated	CO-9	CS-3	746.13	745	485	0.23%	AR705524
UD-13	4" PVC	CS-3	EIN-5	745	744.5	222	0.23%	AR705544
UD-14	4" Perforated	CO-9	EXIST	746.13	743.25	516	0.56%	AR705524
UD-15	4" Perforated	CO-10	CS-4	743.28	741.5	175	1.02%	AR705524
UD-16	4" PVC	CS-4	IN-4	741.5	741.01	55	0.89%	AR705544
UD-17	4" Perforated	CO-11	CS-4	742.75	741.5	400	0.31%	AR705524
UD-18	4" Perforated	CO-12	CO-11	743.75	742.75	415	0.24%	AR705524

PIPE	MATERIAL	UP STR	DOWN STR	UP INV	DOWN INV	LENGTH	SLOPE	NOTES
SS-1	12" RCP	IN-1	MH-1	743.7	743.53	32	0.53%	AR701512
SS-2	12" RCP	IN-2	IN-3	744.42	743.7	240	0.30%	AR701512
SS-3	21" RCP	FES-1	EIN-3	744	743.62	72	0.53%	AR701521
SS-4	12" RCP	IN-4	MH-2	741.01	740.5	96	0.53%	AR701512

UN053

REVISIONS		
NUMBER	BY	DATE



UNIVERSITY OF ILLINOIS
 WILLARD AIRPORT
 SAVOY, ILLINOIS

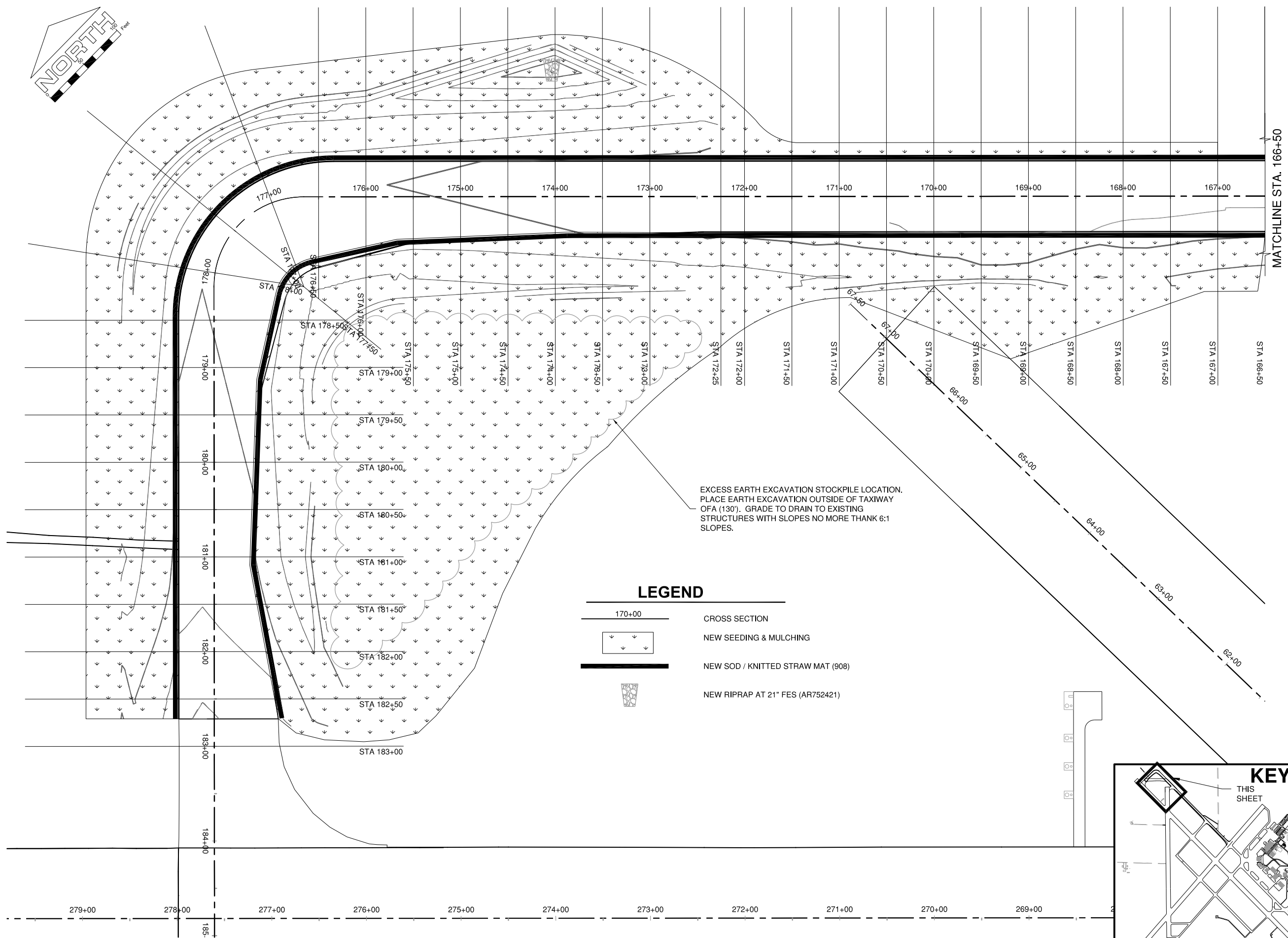
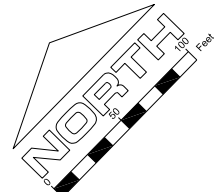
**BASE BID - REALIGN AND WIDEN TAXIWAY C
 TURFING PLAN AND INDEX TO CROSS
 SECTIONS SHEET 1 - ADDENDUM**

© Copyright CMT, Inc.

CMT
 CRAWFORD, MURPHY & TILLY, INC.
 CONSULTING ENGINEERS
 License No. 184-000613



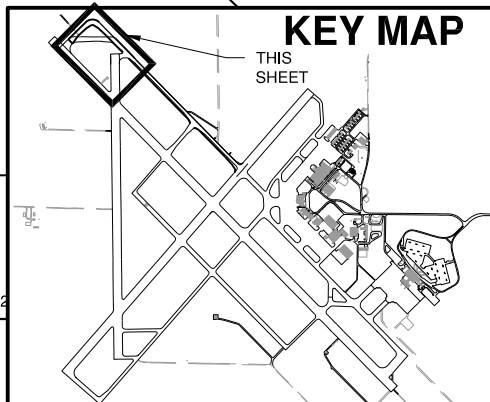
DESIGN BY:	CBG
DRAWN BY:	ADD
CHECKED BY:	CET
APPROVED BY:	CET
DATE:	JUNE 27, 2014
JOB No:	13059-02-00
IL PROJ. NO. CMI-4347 AIP PROJ. NO. 3-17-0016-XX	
SHEET	64A OF 83 SHEETS



EXCESS EARTH EXCAVATION STOCKPILE LOCATION.
 PLACE EARTH EXCAVATION OUTSIDE OF TAXIWAY
 OFA (130'). GRADE TO DRAIN TO EXISTING
 STRUCTURES WITH SLOPES NO MORE THAN 6:1
 SLOPES.

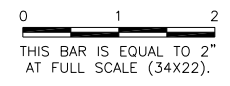
LEGEND

- 170+00 CROSS SECTION
- NEW SEEDING & MULCHING
- NEW SOD / KNITTED STRAW MAT (908)
- NEW RIPRAP AT 21" FES (AR752421)



UN053

REVISIONS		
NUMBER	BY	DATE

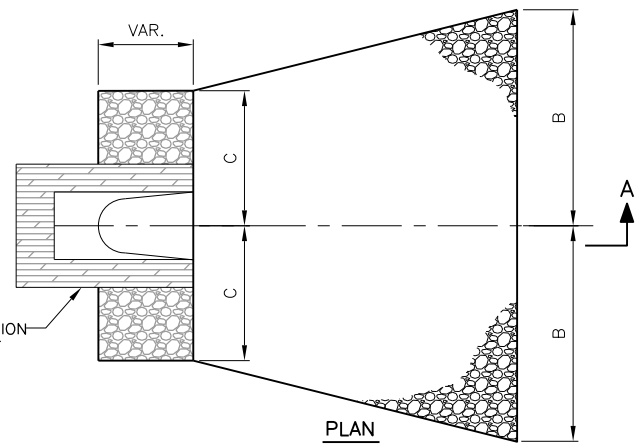
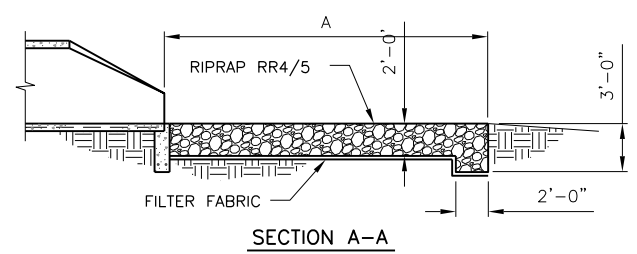


UNIVERSITY OF ILLINOIS
 WILLARD AIRPORT
 SAVOY, ILLINOIS

BASE BID - REALIGN AND WIDEN TAXIWAY C
 EROSION CONTROL DETAILS - ADDENDUM

© Copyright CMT, Inc.
CMT
 CRAWFORD, MURPHY & TILLY, INC.
 CONSULTING ENGINEERS
 License No. 184-000613

DESIGN BY:	CBG
DRAWN BY:	ADD
CHECKED BY:	CET
APPROVED BY:	CET
DATE:	JUNE 27, 2014
JOB No:	13059-02-00
IL PROJ. NO. CMI-4347 AIP PROJ. NO. 3-17-0016-XX	
SHEET 67A OF 83 SHEETS	

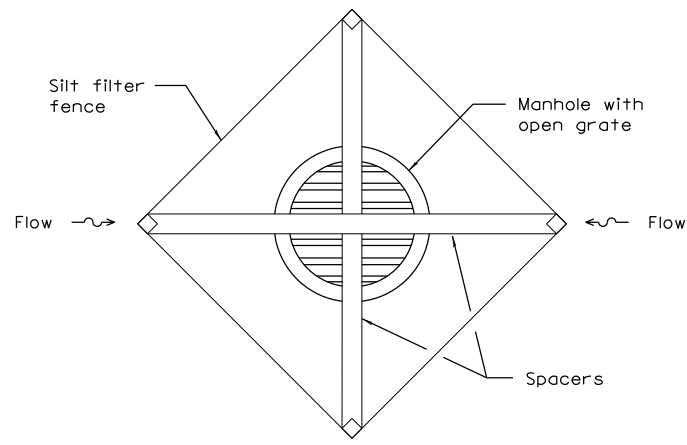
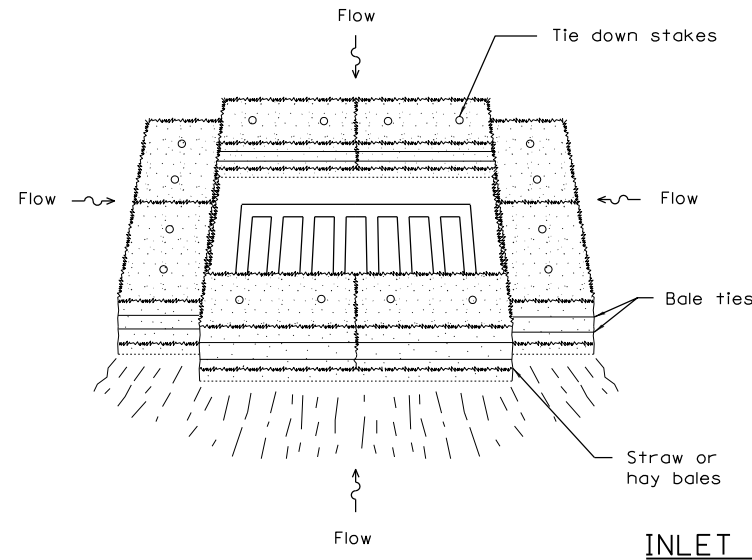


DIMENSIONS - TABLE 1

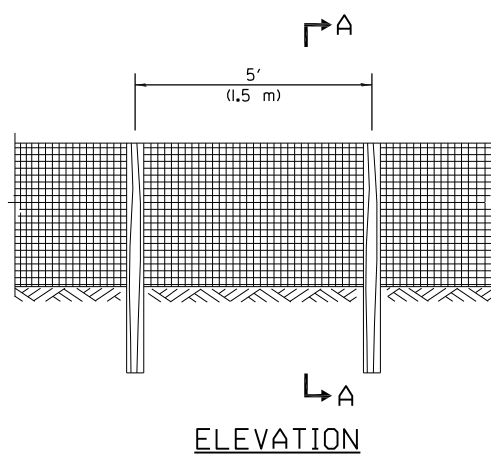
INSIDE DIAMETER STORM SEWER (IN.)	OUTLET DIMENSION (FT.)			INLET DIMENSION (FT.)		
	A	B	C	A	B	C
21"	20	12	5	16	10	5

RIP-RAP DETAILS
 N.T.S.

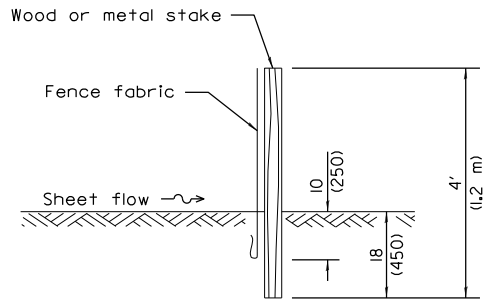
THE ENGINEER SHALL DETERMINE THE FINAL RIP-RAP CONFIGURATION IN THE FIELD. NO DIRECT PAYMENT WILL BE MADE FOR RIPRAP, FILTER FABRIC AND EROSION CONTROL BLANKET. ALL ITEMS DETAILED SHALL BE INCIDENTAL TO THE FES INSTALLATION.



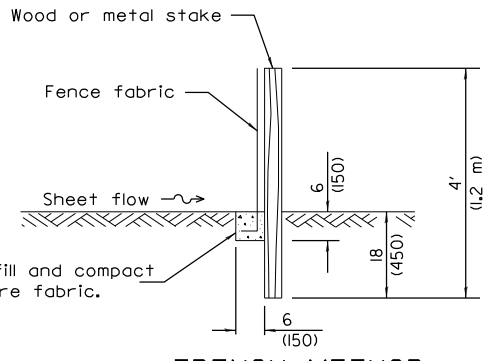
INLET PROTECTION



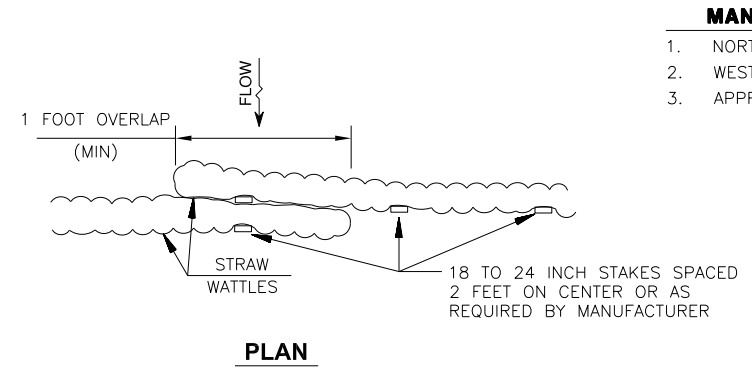
ELEVATION



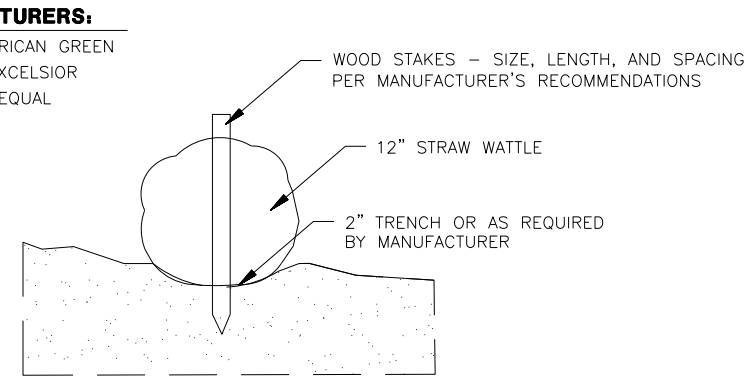
SLICE METHOD



TRENCH METHOD
SECTION A-A



PLAN



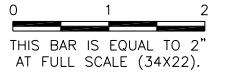
SECTION

- MANUFACTURERS:**
1. NORTH AMERICAN GREEN
 2. WESTERN EXCELSIOR
 3. APPROVED EQUAL

STRAW WATTLES
 N.T.S.

UN053

REVISIONS		
NUMBER	BY	DATE



UNIVERSITY OF ILLINOIS
 WILLARD AIRPORT
 SAVOY, ILLINOIS

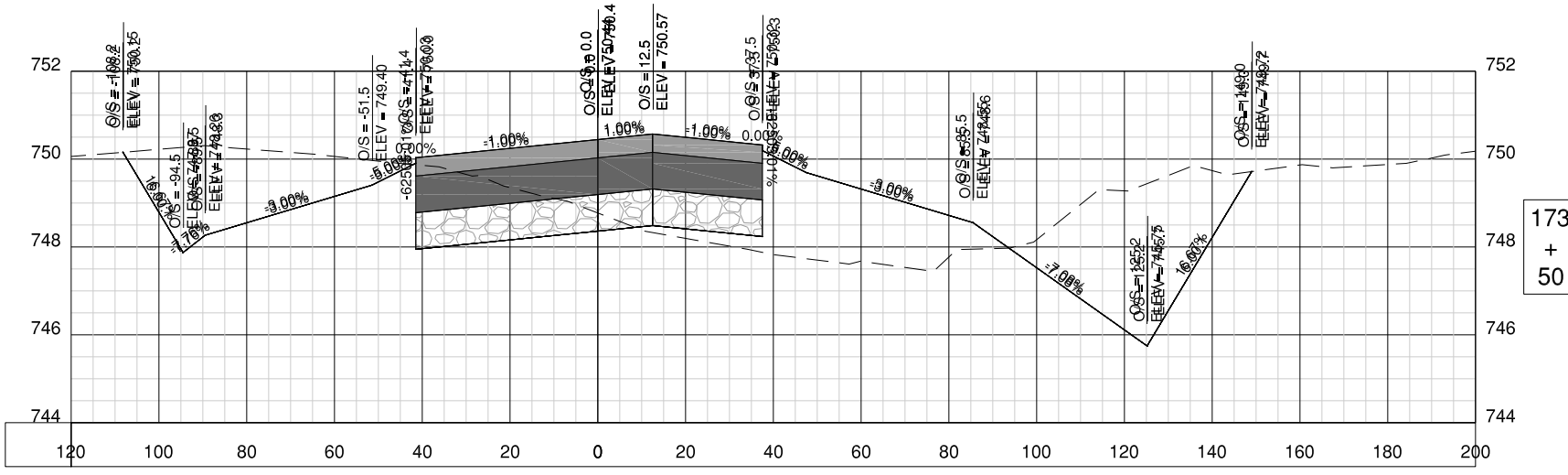
**BASE BID - REALIGN AND WIDEN TAXIWAY C
 CROSS SECTION PLAN 08 - ADDENDUM**

© Copyright CMT, Inc.

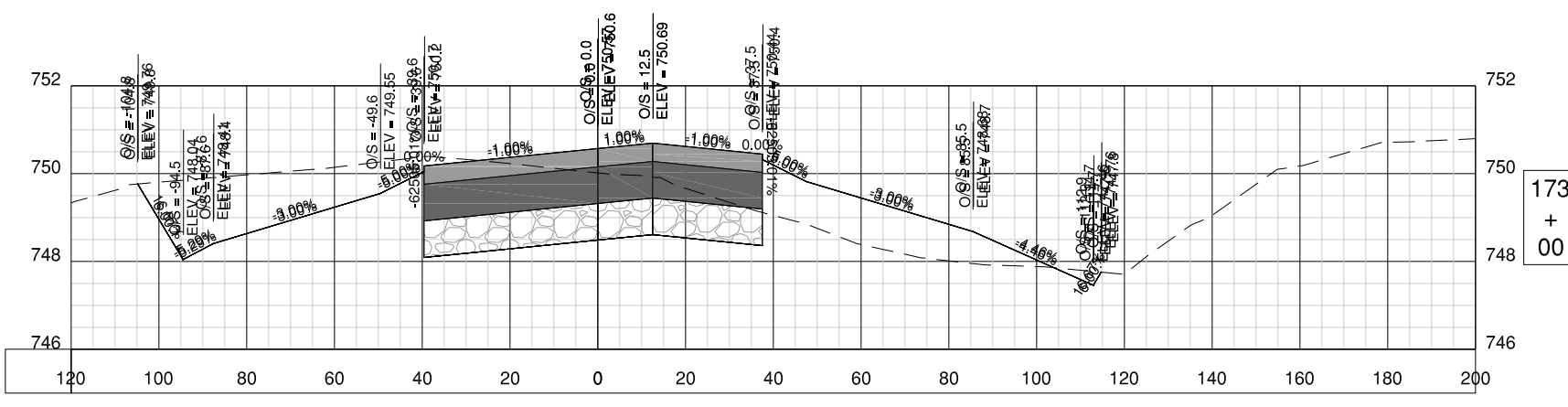
CMT
 CRAWFORD, MURPHY & TILLY, INC.
 CONSULTING ENGINEERS
 License No. 184-000613



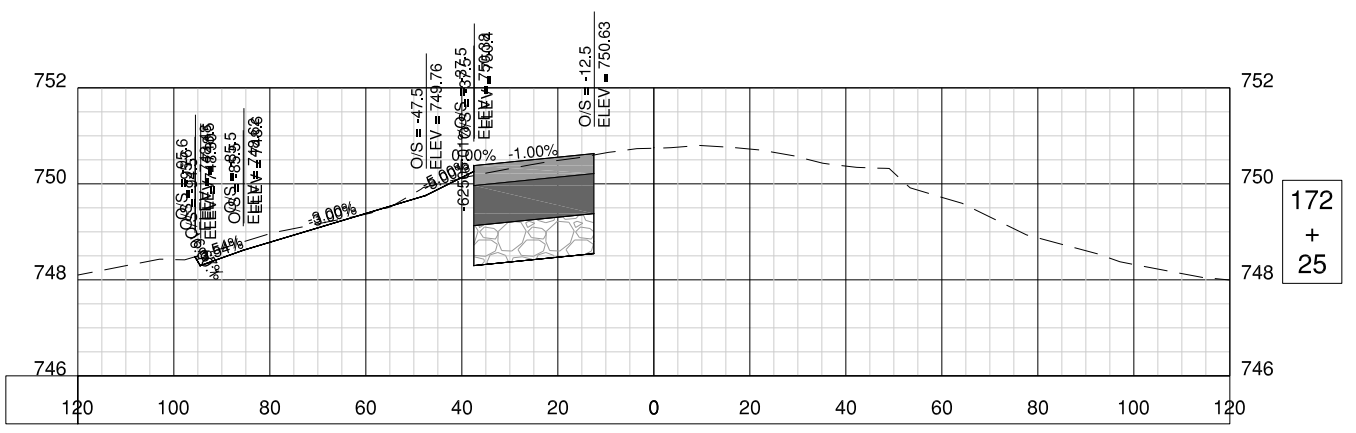
DESIGN BY:	AJG
DRAWN BY:	ADD
CHECKED BY:	CBG
APPROVED BY:	CET
DATE:	JUNE 27, 2014
JOB No:	13059-02-00
IL PROJ. NO. CMI-4347 AIP PROJ. NO. 3-17-0016-XX	
SHEET 80A OF 83 SHEETS	



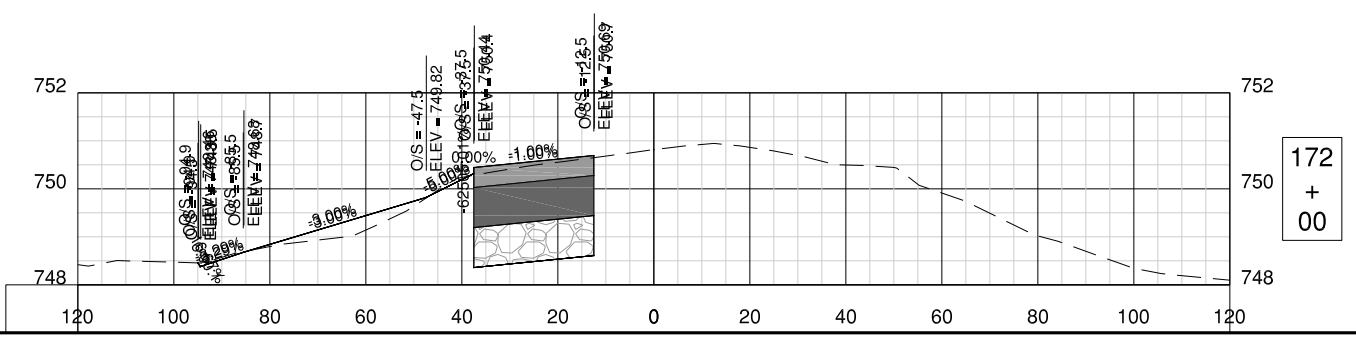
173
+
50



173
+
00



172
+
25



172
+
00

UN053

REVISIONS		
NUMBER	BY	DATE

0 1 2
 THIS BAR IS EQUAL TO 2"
 AT FULL SCALE (34X22).

UNIVERSITY OF ILLINOIS
 WILLARD AIRPORT
 SAVOY, ILLINOIS

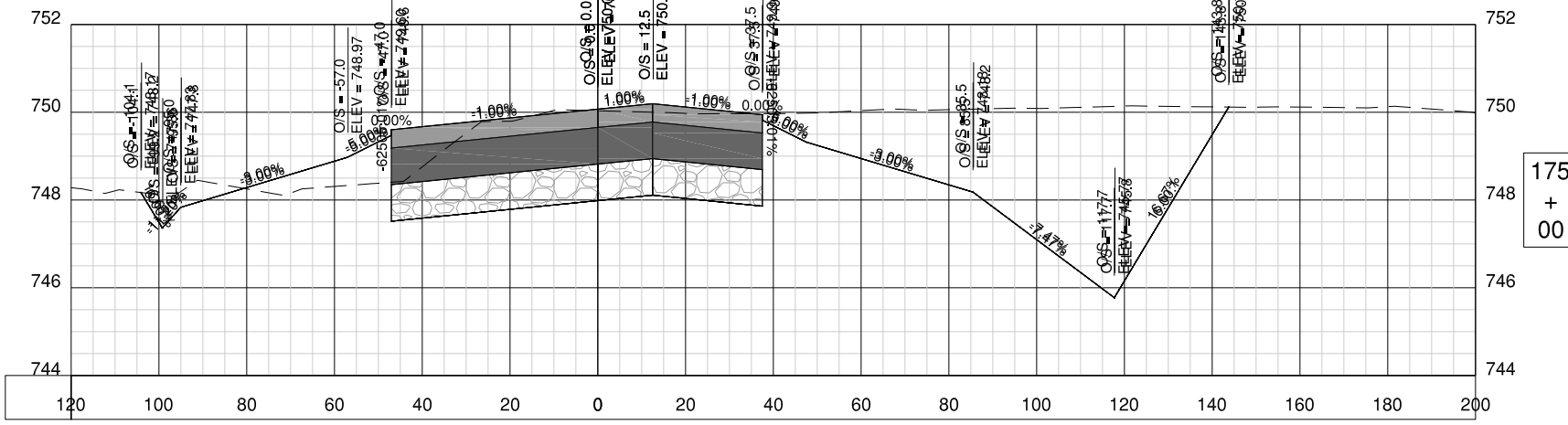
BASE BID - REALIGN AND WIDEN TAXIWAY C
 CROSS SECTION PLAN 09 - ADDENDUM

© Copyright CMT, Inc.

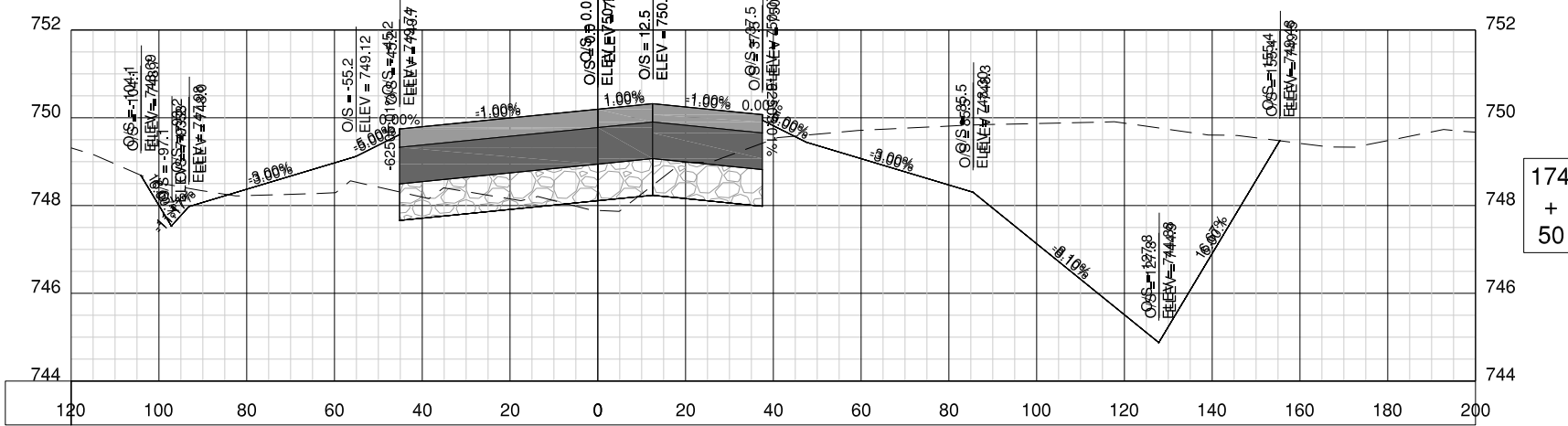


CRAWFORD, MURPHY & TILLY, INC.
 CONSULTING ENGINEERS
 License No. 184-000613

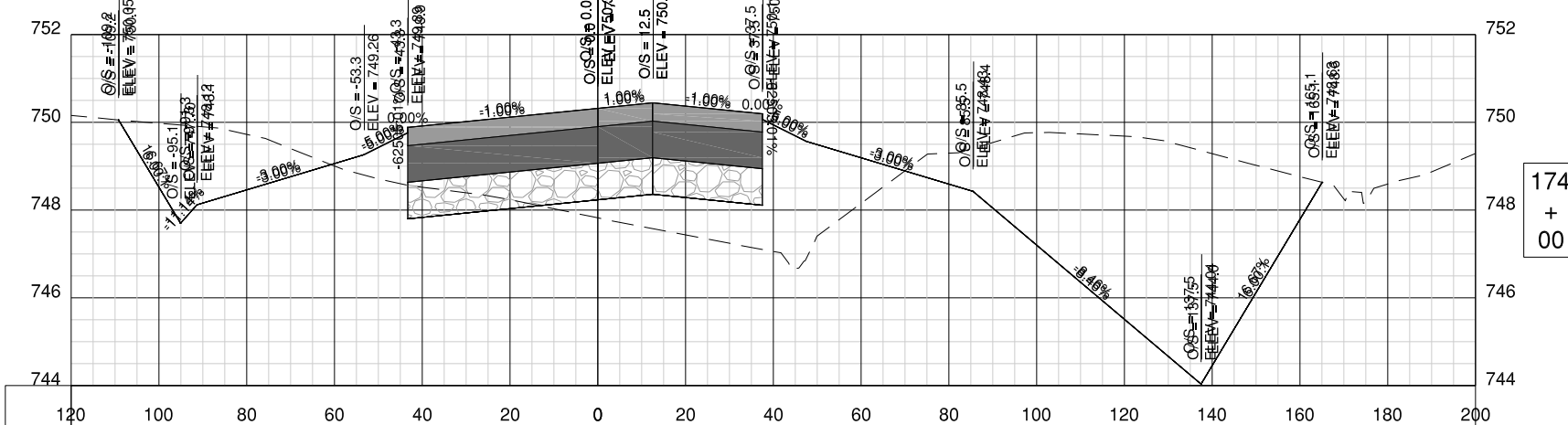
DESIGN BY:	AJG
DRAWN BY:	ADD
CHECKED BY:	CBG
APPROVED BY:	CET
DATE:	JUNE 27, 2014
JOB No:	13059-02-00
IL PROJ. NO. CMI-4347 AIP PROJ. NO. 3-17-0016-XX	
SHEET 81A OF 83 SHEETS	



175
 +
 00



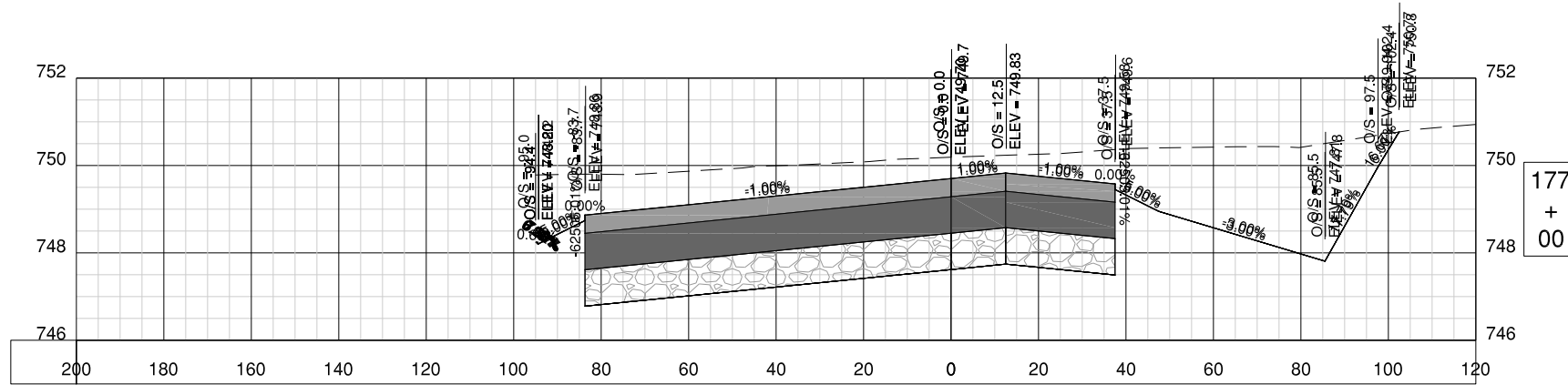
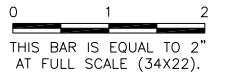
174
 +
 50



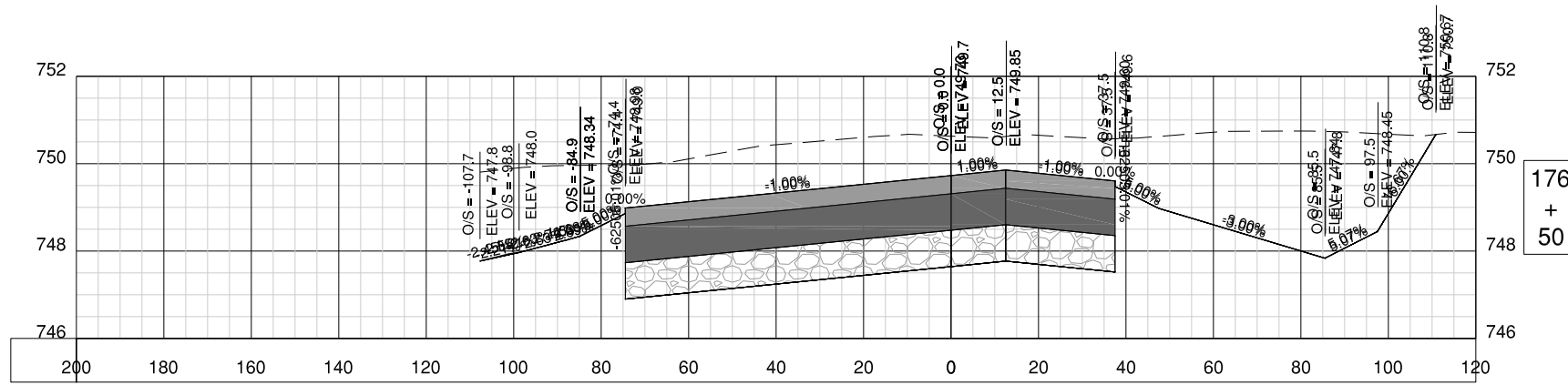
174
 +
 00

UN053

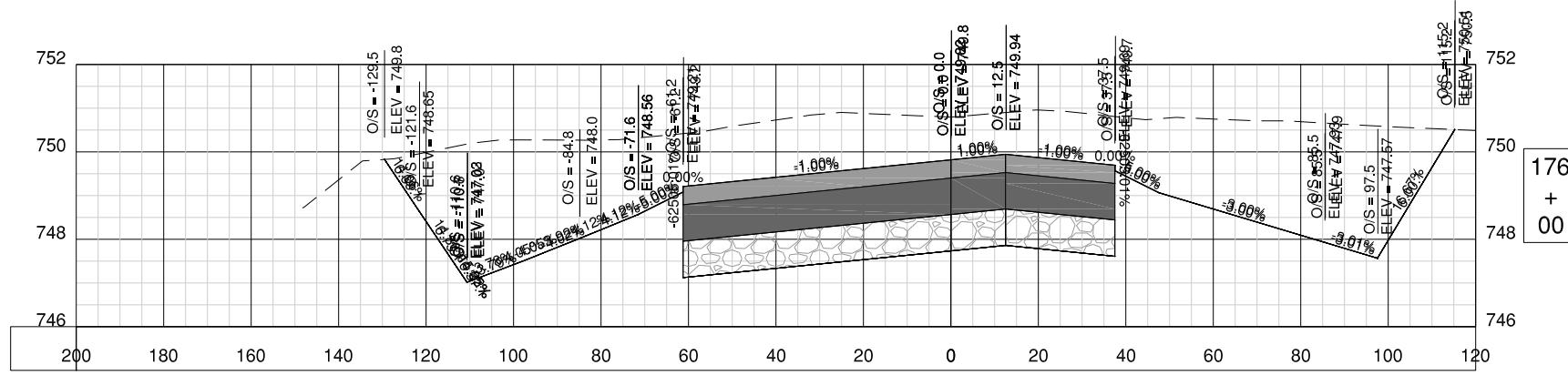
REVISIONS		
NUMBER	BY	DATE



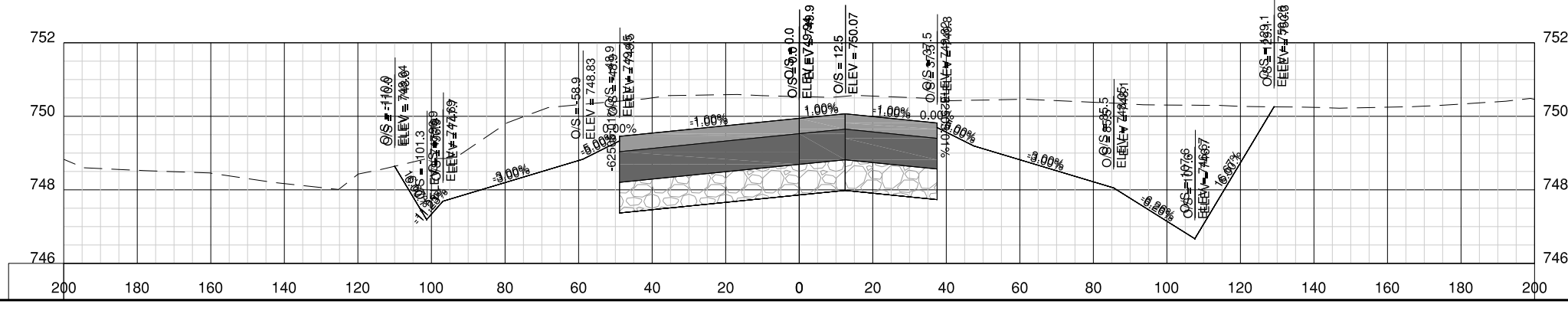
177
+
00



176
+
50



176
+
00



175
+
50

UNIVERSITY OF ILLINOIS
 WILLARD AIRPORT
 SAVOY, ILLINOIS

**BASE BID - REALIGN AND WIDEN TAXIWAY C
 CROSS SECTION PLAN 10 - ADDENDUM**

© Copyright CMT, Inc.



CRAWFORD, MURPHY & TILLY, INC.
 CONSULTING ENGINEERS
 License No. 184-000613

DESIGN BY:	AJG
DRAWN BY:	ADD
CHECKED BY:	CBG
APPROVED BY:	CET
DATE:	JUNE 27, 2014
JOB No:	13059-02-00
IL PROJ. NO. CMI-4347 AIP PROJ. NO. 3-17-0016-XX	
SHEET	82A OF 83 SHEETS