

STATE OF ILLINOIS
DEPARTMENT OF TRANSPORTATION

FAU ROUTE	SECTION	COUNTY	TOTAL SHEETS	SHEET NO.
297	FAU 297 23 OVERLAY	COOK	24	1
ILLINOIS CONTRACT NO. 62V12				
* 24 + 2 = 26 TOTALSHEETS				

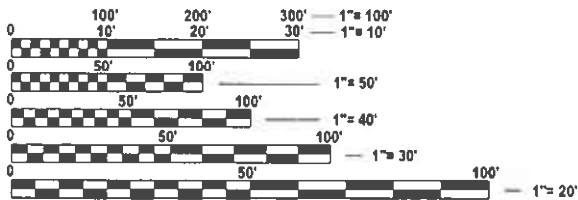
D-91-150-23

FOR INDEX OF SHEETS, SEE SHEET NO. 2

THIS IMPROVEMENT IS IN THE
VILLAGE OF ORLAND PARK

TRAFFIC DATA
SOUTHWEST HWY
ADT: 3500 (2021)
POSTED SPEED LIMIT: 50 MPH

FAU ROUTE 297: US 6 (SOUTHWEST HWY)
LIMIT: SOUTH OF WOLF RD TO WILL-COOK RD
SECTION: FAU 297 23 OVERLAY
PROJECT: STP-5WVJ(064)
STANDARD OVERLAY W/ ADA IMPROVEMENTS
COOK COUNTY
C-91-217-23

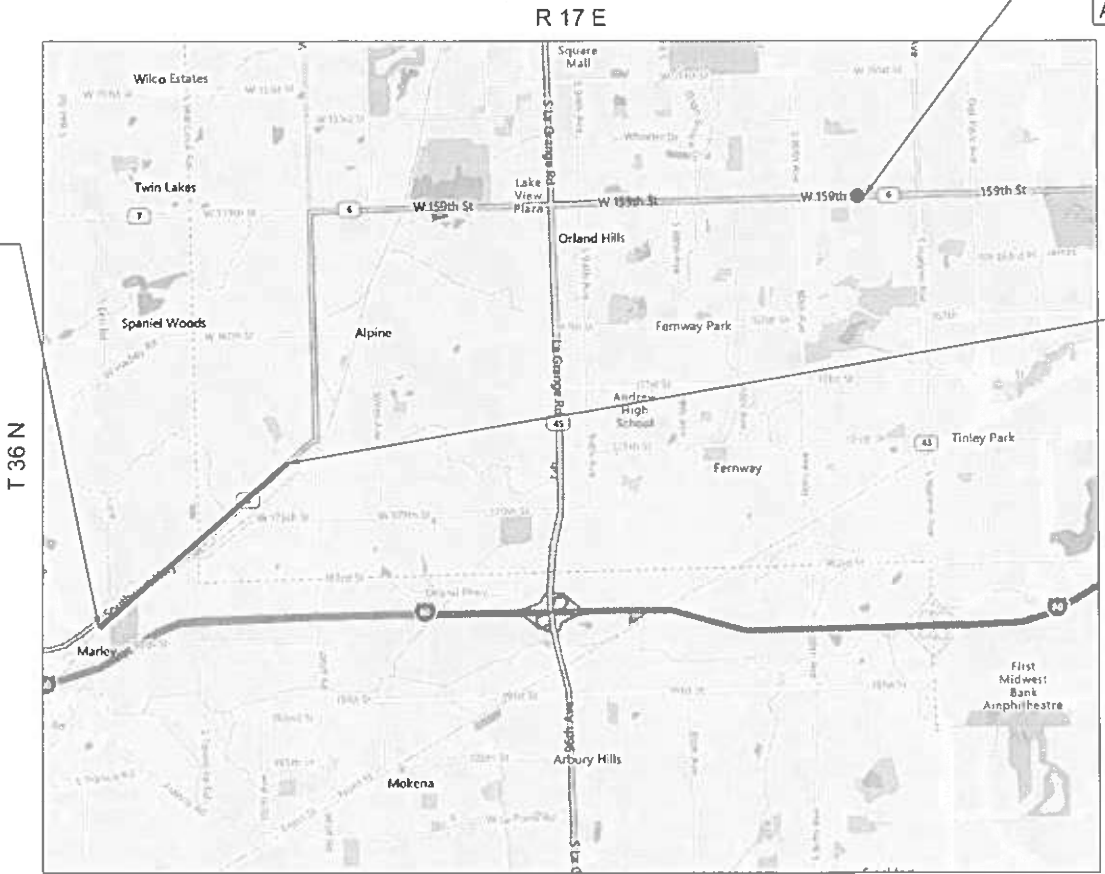


FULL SIZE PLANS HAVE BEEN PREPARED USING STANDARD
ENGINEERING SCALES. REDUCED SIZED PLANS WILL NOT
CONFORM TO STANDARD SCALES. IN MAKING MEASUREMENTS
ON REDUCED PLANS, THE ABOVE SCALES MAY BE USED.

J.U.L.I.E.
JOINT UTILITY LOCATION INFORMATION FOR EXCAVATION
1-800-892-0123
OR 811

PROJECT ENGINEER: RODRIGO LEDEZMA (847) 705-4580
PROJECT MANAGER: J. ALAIN MIDY (847) 221-3056

CONTRACT NO. 62V12



PROPOSED SIDEWALK
FOUR CORNER AT
US 6 (159TH ST) & 76TH
AVE

PROJECT START:
STA. 13+89

PROJECT END:
STA. 68+28

OMISSION:
STA. 27+17 TO
STA. 42+31

ORLAND TOWNSHIP

GROSS LENGTH = 5439 FT. = 1.030 MILE
NET LENGTH = 3925 FT. = 0.743 MILE



STATE OF ILLINOIS
DEPARTMENT OF TRANSPORTATION

SUBMITTED March 11th 2025
Jose Los IR
REGIONAL ENGINEER

June 27th 2025
Scott Etk
ENGINEER OF DESIGN AND ENVIRONMENT

June 27th 2025
Cherry
DIRECTOR OF HIGHWAYS PROJECT IMPLEMENTATION

PRINTED BY THE AUTHORITY
OF THE STATE OF ILLINOIS


INDEX OF SHEETS


STATE STANDARDS

GENERAL NOTES

SHEET NO.	DESCRIPTION	STANDARD NO.	DESCRIPTION	
1	COVER SHEET	000001-08	STANDARD SYMBOLS, ABBREVIATIONS, AND PATTERNS	1. THE CONTRACTOR WILL NOT BE ALLOWED TO SET UP A YARD OR FIELD OFFICE ON STATE PROPERTY WITHOUT WRITTEN PERMISSION FROM THE DEPARTMENT.
2	INDEX OF SHEETS, STATE STANDARDS, AND GENERAL NOTES	442201-03	CLASS C&D PATCHES	2. ALL MILLED SURFACES SHALL BE A UNIFORM CROSS SLOPE PER LANE AND FREE OF RIDGES BETWEEN PASSES. ANY DEVIATIONS SHALL BE CORRECTED AT NO COST TO THE DEPARTMENT.
3-4	SUMMARY OF QUANTITIES	630001-13	STEEL PLATE BEAM GUARDRAIL	3. BUTT JOINTS SHALL BE INSTALLED AT THE ENDS OF ALL RESURFACING (WHERE RESURFACING MEETS EXISTING PAVEMENT) ACCORDING TO THE "BUTT JOINT AND HOT-MIX ASPHALT TAPER DETAILS" SHEET INCLUDED IN THE PLANS, UNLESS OTHERWISE SPECIFIED.
5	TYPICAL SECTIONS	701001-02	OFF-RD OPERATIONS, 2L, 2W, MORE THAN 15' (4.5 m) AWAY	4. ALL PAVEMENT PATCHING LOCATIONS WILL BE DETERMINED IN THE FIELD BY THE ENGINEER.
6-7	ROADWAY PLANS	701006-05	OFF-RD OPERATIONS, 2L, 2W, 15' (4.5 m) TO 24" (600 mm) FROM PAVEMENT EDGE	5. LOCATION OF COMBINATION CONCRETE CURB AND GUTTER REMOVAL AND REPLACEMENT [OR COMBINATION CURB AND GUTTER (THE TYPE SPECIFIED ON THE PLANS)], WILL BE DETERMINED IN THE FIELD BY THE ENGINEER.
8-10	ADA IMPROVEMENT DETAILS	701011-04	OFF-RD MOVING OPERATIONS 2L, 2W, DAY ONLY	6. TEN (10) FOOT TRANSITIONS SHALL BE USED TO MATCH PROPOSED CURB AND GUTTER AND MEDIAN ITEMS OF WORK TO EXISTING CURBS AND GUTTER AND MEDIANS IN THE FIELD, UNLESS OTHERWISE SHOWN.
11-12B	DETECTOR LOOP AND APS PLANS	701201-05	LANE CLOSURE, 2L 2W, DAY ONLY, FOR SPEEDS ≥ 45 MPH	7. DRAINAGE ADJUSTMENT OR RECONSTRUCTION LOCATIONS WILL BE DETERMINED IN THE FIELD BY THE ENGINEER.
13	DETAILS FOR FRAMES AND LIDS ADJUSTMENT WITH MILLING (BD-08)	701301-04	LANE CLOSURE, 2L, 2W, SHORT TIME OPERATIONS	8. IT SHALL BE THE CONTRACTOR'S RESPONSIBILITY TO VERIFY ALL DIMENSIONS AND CONDITIONS EXISTING IN THE FIELD PRIOR TO CONSTRUCTION AND ORDERING OF MATERIALS.
14	PAVEMENT PATCHING FOR HMA SURFACED PAVEMENT (BD-22)	701306-04	LANE CLOSURE, 2L, 2W, SLOW MOVING OPERATIONS DAY ONLY, FOR SPEEDS ≥ 45 MPH	9. FRAMES AND GRATES ADJUSTMENT OF PRIVATE UTILITIES WITHIN THE LIMITS OF THE IMPROVEMENTS SHALL BE DONE BY THEIR RESPECTIVE OWNERS AND ARE NOT PART OF THIS CONTRACT.
15	CURB AND GUTTER REMOVAL AND REPLACEMENT (BD-24)	701311-03	LANE CLOSURE, 2L, 2W, MOVING OPERATIONS 1- DAY ONLY	10. THE CONTRACTOR SHALL BE REQUIRED TO KEEP A RECORD OF THE LOCATIONS OF PLATED STRUCTURES BY STATION AND OFFSET LEFT OR RIGHT OF THE CENTERLINE OF PAVEMENT.
16	BUTT JOINT AND HMA TAPER DETAILS (BD-32)	701801-06	SIDEWALK, CORNER OR CROSSWALK CLOSURE	11. EXISTING BROKEN FRAMES AND LIDS SHALL BE REMOVED AND DISPOSED OF BY THE CONTRACTOR AND SHALL BE REPLACED AS DIRECTED BY THE ENGINEER. REPLACEMENT FRAMES AND LIDS WILL BE PAID FOR ACCORDING TO ARTICLE 109.04 OF THE STANDARD SPECIFICATIONS UNLESS A SEPARATE PAY ITEM HAS BEEN PROVIDED.
17	TRAFFIC CONTROL AND PROTECTION FOR SIDE ROADS, INTERSECTIONS, AND DRIVEWAYS (TC-10)	701901-09	TRAFFIC CONTROL DEVICES	12. THE CONTRACTOR SHALL CONTACT THE DISTRICT ONE TRAFFIC CONTROL SUPERVISOR KALPANA KANNAN-HOSADURGA AT KALPANA.KANNAN-HOSADURGA@ILLINOIS.GOV A MINIMUM OF 72 HOURS IN ADVANCE OF BEGINNING WORK.
18	TYPICAL APPLICATIONS RAISED REFLECTIVE PAVEMENT MARKERS (SNOW-PLOW RESISTANT) (TC-11)	886001-01	DETECTOR LOOP INSTALLATIONS	13. THE ENGINEER SHALL CONTACT ERIC CAMPOS, AREA TRAFFIC FIELD ENGINEER, AT ERIC.CAMPOS@ILLINOIS.GOV A MINIMUM OF TWO (2) WEEKS PRIOR TO THE PLACEMENT OF PERMANENT PAVEMENT MARKINGS.
19	DISTRICT ONE TYPICAL PAVEMENT MARKINGS (TC-13)			14. PAVEMENT MARKING TAPE, TYPE IV SHALL BE USED FOR SHORT TERM PAVEMENT MARKINGS ON ALL FINAL SURFACES.
20	SHORT TERM PAVEMENT MARKING LETTERS AND SYMBOLS (TC-16)			15. OVERNIGHT LANE CLOSURES SHALL NOT BE ALLOWED FOR REHABILITATION PROJECTS INVOLVING DAYTIME MILLING AND RESURFACING OPERATIONS AND CLASS D PATCHING UNLESS OTHER CONDITIONS WARRANT EXTENDED LANE CLOSURES AS DETERMINED AND APPROVED IN WRITING BY THE ENGINEER OR AS PROVIDED FOR IN THE CONTRACT SPECIFICATIONS.
21	ARTERIAL ROAD INFORMATION SIGN (TC-22)			16. THE CONTRACTOR SHALL CONTACT THE ROADSIDE DEVELOPMENT UNIT AT (847) 705-4171 AT LEAST 1 WEEK IN ADVANCE OF BEGINNING FORESTRY WORK, WEED SPRAYING, AND SEEDING.
22	DRIVEWAY ENTRANCE SIGNING (TC-26)			
23	DISTRICT 1 - DETECTOR LOOP INSTALLATION DETAILS FOR RAODWAY RESURFACING (TS-07)			
24	PROJECT DETAIL FOR SINGLE PERPENDICULAR CURB RAMPS (PD-01)			

MODEL: GenNotesSh01 [Sheet]
FILE NAME: c:\paw_work\paw\dot\roth\p\0967711\0115023-shh-gennote.dgn

	USER NAME = Jacob.Roth	DESIGNED -	REVISED -  07/18/2025 BA	STATE OF ILLINOIS DEPARTMENT OF TRANSPORTATION	INDEX OF SHEETS, STATE STANDARDS AND GENERAL NOTES US 6 - S/O WOLF RD TO WILL COOK RD	F.A.U RTE.	SECTION	COUNTY	TOTAL SHEETS	SHEET NO.	
		DRAWN -	REVISED -			297	FAU 297 22 OVERLAY	COOK	25	2	
	PLOT SCALE = 0.16666633 "/In.	CHECKED -	REVISED -			CONTRACT NO. 62V12					
	PLOT DATE = 5/8/2025	DATE -	REVISED -			SCALE:	SHEET OF 1 SHEETS	STA.	TO STA.	ILLINOIS	FED. AID PROJECT



REVISED SHEET 7/21/2025

RESURFACING OMISSION

New Sheet



REMOVAL AND RELOCATION NOTES:

THE FOLLOWING ITEMS SHALL BE REMOVED BY THE CONTRACTOR AND SHALL BE DISPOSED OF BY THEM OUTSIDE THE RIGHT-OF-WAY AT THEIR EXPENSE. THE SALVAGE VALUE OF THE REMOVED EQUIPMENT SHALL BE REFLECTED IN THE CONTRACT BID PRICE.

- 8 EACH PEDESTRIAN PUSH-BUTTON
- 1 EACH RADAR DETECTOR
- 1 EACH RADAR AMPLIFIER

NOTES:

- CONTRACTOR SHALL CONFIRM THE FINAL LOCATION OF THE PEDESTRIAN EQUIPMENT BEFORE INSTALLATION WITH THE TRAFFIC SIGNAL ENGINEER.
- APS SHALL BE PLACED PARALLEL TO THE CORRESPONDING CROSSWALK.
- THIS PLAN IS FOR THE REMOVAL OF PUSH BUTTONS, INSTALLATION OF APS PUSH BUTTONS, AND INSTALLATION OF VIDEO DETECTION WITHIN THE RESURFACING OMISSION AS SHOWN.
- ALL PUSH BUTTONS SHALL BE APS
- ALL EXISTING TRAFFIC SIGNAL CABLE NO LONGER REQUIRED SHALL BE REMOVED
- THE REMOVAL OF 93 FEET OF RADAR CABLE SHALL BE PAID FOR UNDER 89502300 REMOVE ELECTRIC CABLE FROM CONDUIT
- VIDEO DETECTION SYSTEMS SHALL BE MOUNTED ON RISER BRACKETS AT THE LENGTH DETERMINED BY THE MANUFACTURER, FINAL CAMERA LOCATIONS SHALL BE OPTIMAL TO MINIMIZE OCCLUSION ON FALSE CALLS FROM TRAFFIC ADJACENT LANES.

MODEL: Traffic-s5 (Sheet)
FILE NAME: c:\ppl_work\pwtol\illinois.gov_baraa.alsmadi\11D115023-sh1-TS.dgn

USER NAME	= Baraa.alsmadi	DESIGNED	-	REVISED	- 1 07/18/2025 BA
		DRAWN	-	REVISED	-
		CHECKED	-	REVISED	-
PLOT DATE	= 7/16/2025	DATE	-	REVISED	-

STATE OF ILLINOIS
DEPARTMENT OF TRANSPORTATION

TRAFFIC SIGNAL MODERNIZATION PLAN
US 6 (SOUTHWEST HWY) AT BROOK HILL DR/179TH ST

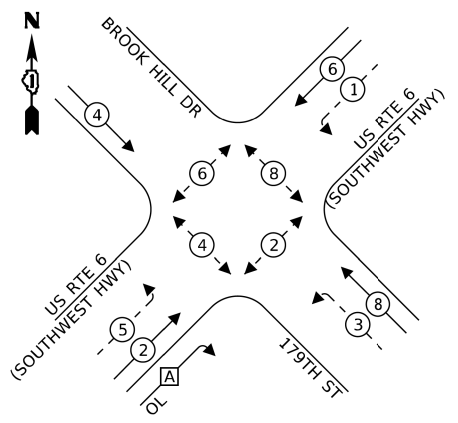
SCALE: SHEET 3 OF 4 SHEETS STA. TO STA.

1 ADDED ENTIRE SHEET 7/21/2025

TS 153

FAU RTE.	SECTION	COUNTY	TOTAL SHEETS	SHEET NO.
297	FAU 297 22 OVERLAY	COOK	24	12A
CONTRACT NO. 62V12				
ILLINOIS FED. AID PROJECT				

EXISTING CONTROLLER SEQUENCE



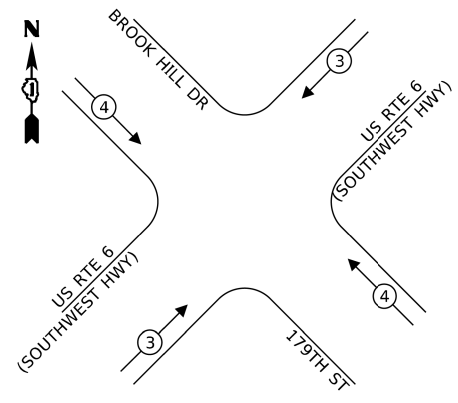
LEGEND:

- ← * → PROTECTED PHASE
- ← * - PROTECTED/PERMITTED PHASE
- ← * → PEDESTRIAN PHASE
- ← * OL OVERLAP

RIGHT TURN OVERLAP
PHASE DESIGNATION:

OVERLAP LETTER	PERMISSIVE PHASE	PROTECTED PHASE
A	= 2	+ 3

EXISTING EMERGENCY VEHICLE
PREEMPTION SEQUENCE



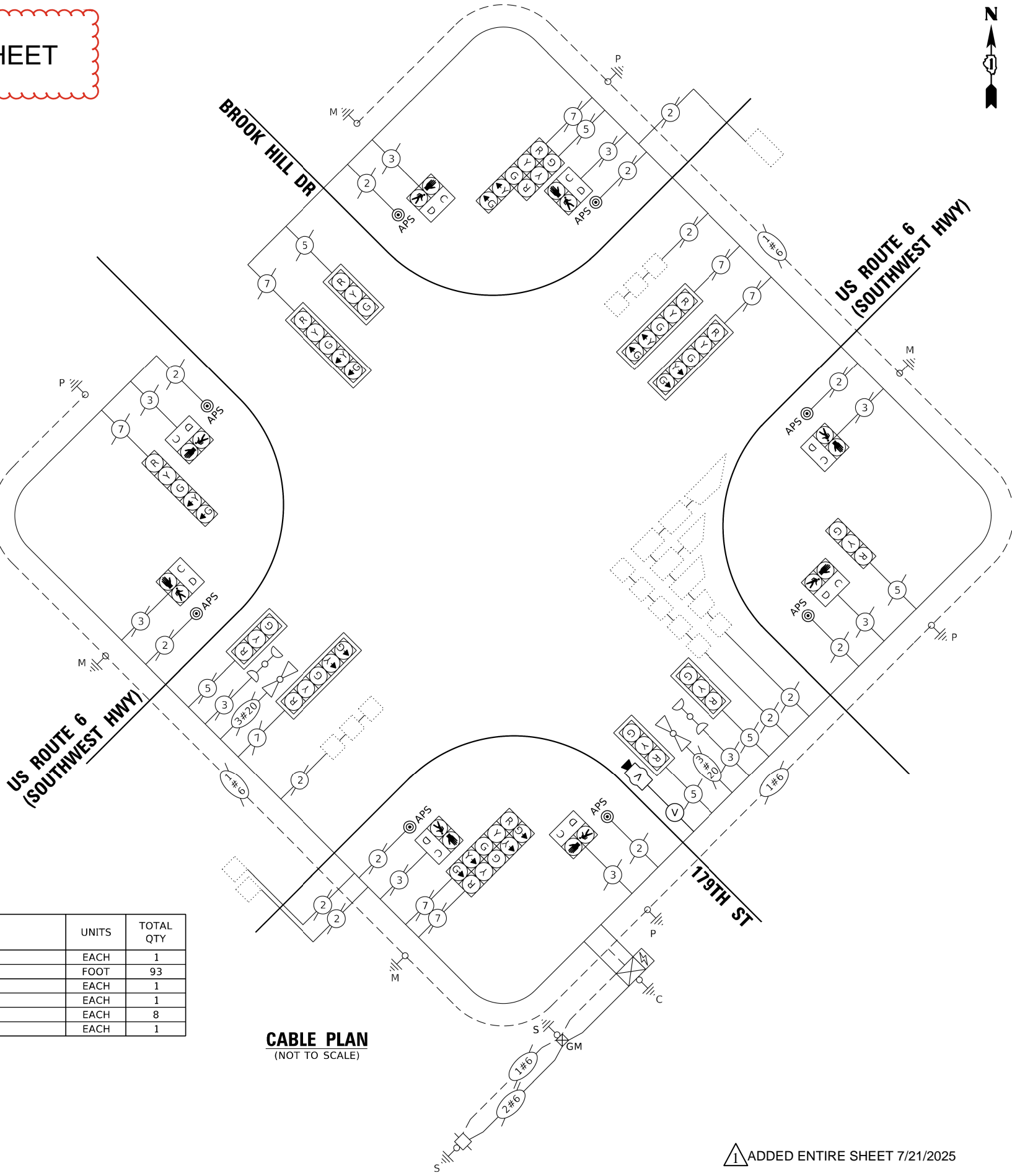
TRAFFIC SIGNAL
ELECTRICAL SERVICE REQUIREMENTS

EQUIPMENT TYPE	QUANTITY	UNIT WATTAGE	TOTAL WATTAGE
SIGNAL HEAD 1 OR 3-SECTION	6	11	66
4-SECTION	-	14	-
5-SECTION	8	13	104
PROGRAMMABLE 3-SECTION	-	22	-
4-SECTION	-	32	-
5-SECTION	-	28	-
PEDESTRIAN SIGNAL	8	15	120
CONTROLLER	1	150	150
MASTER CONTROLLER	-	100	-
UPS	1	25	25
DETECTION RADAR OR VIDEO	1	20	20
BLANK-OUT SIGN	-	25	-
NETWORK SWITCH II OR III	-	35	-
CELLULAR MODEM	-	15	-
TOTAL UPS SIZING			485
UPS CHARGING	1	225	225
BATTERY HEATER MAT	1	180	180
CABINET HEATER	1	200	200
FLASHER	-	15	-
LED STREET NAME SIGN	-	120	-
LUMINAIRE	-	240	-
TOTAL SERVICE WIRE SIZING			1090

SCHEDULE OF QUANTITIES

ITEM DESCRIPTION	UNITS	TOTAL QTY
MAINTENANCE OF EXISTING TRAFFIC SIGNAL INSTALLATION	EACH	1
REMOVE ELECTRIC CABLE FROM CONDUIT	FOOT	93
REMOVE EXISTING TRAFFIC SIGNAL EQUIPMENT	EACH	1
VIDEO VEHICLE DETECTION SYSTEM, SINGLE APPROACH	EACH	1
ACCESSIBLE PEDESTRIAN SIGNALS	EACH	8
RE-OPTIMIZE TRAFFIC SIGNAL SYSTEM LEVEL 1	EACH	1
ENERGY COSTS TO:		
VILLAGE OF ORLAND PARK 14700 S. RAVINIA AVENUE ORLAND PARK, IL 60462		
ENERGY SUPPLY: CONTACT: PAUL EDWARDS		
PHONE: 773-573-8637		
COMPANY: COMED		
ACCOUNT NUMBER: ---		
METER NUMBER: ---		

NEW SHEET



CABLE PLAN
(NOT TO SCALE)

ADDED ENTIRE SHEET 7/21/2025

TS 153

STATE OF ILLINOIS
DEPARTMENT OF TRANSPORTATION

CABLE PLAN, PHASE DESIGNATION DIAGRAM, SCHEDULE OF QUANTITIES
US 6 (SOUTHWEST HWY) AT BROOK HILL DR/179TH ST
AND EMERGENCY VEHICLE PREEMPTION SEQUENCE

SCALE: SHEET 4 OF 4 SHEETS STA. TO STA.

F.A.U RTE.	SECTION	COUNTY	TOTAL SHEETS	SHEET NO.
297	FAU 297 22 OVERLAY	COOK	24	12B
CONTRACT NO. 62V12				
ILLINOIS FED. AID PROJECT				