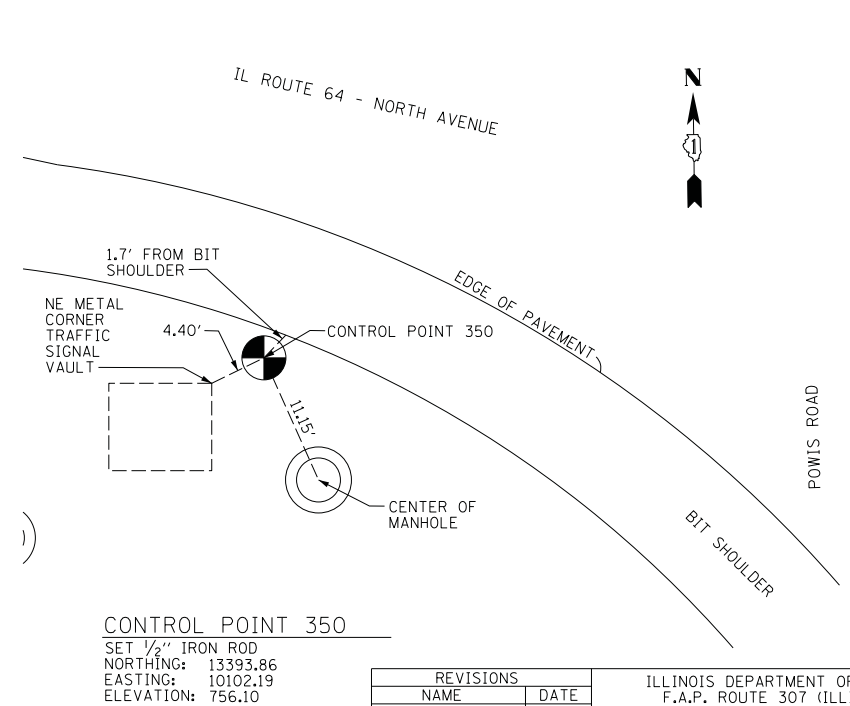
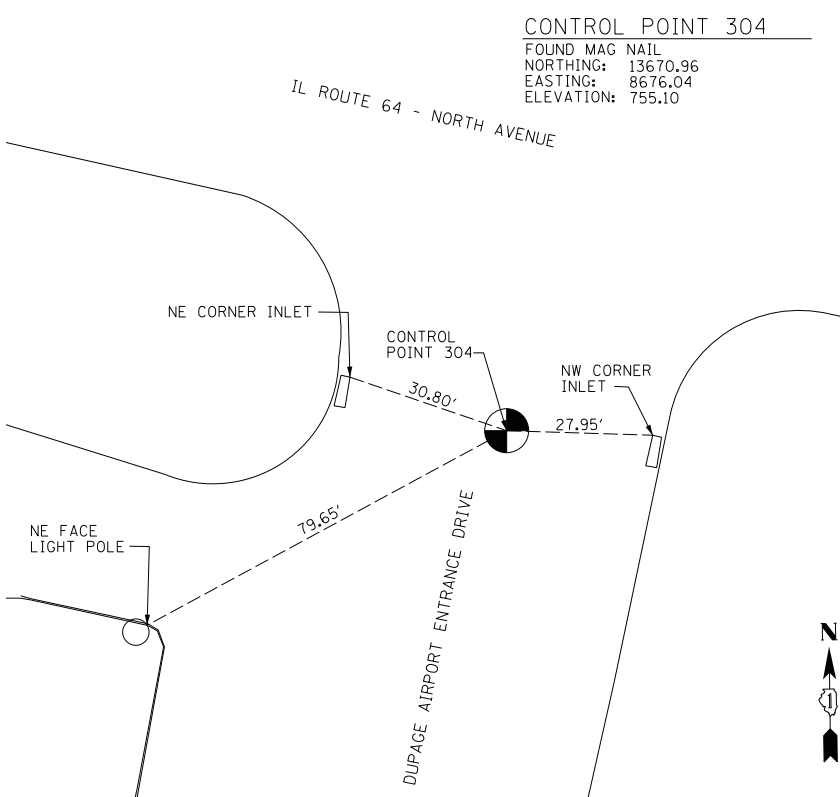
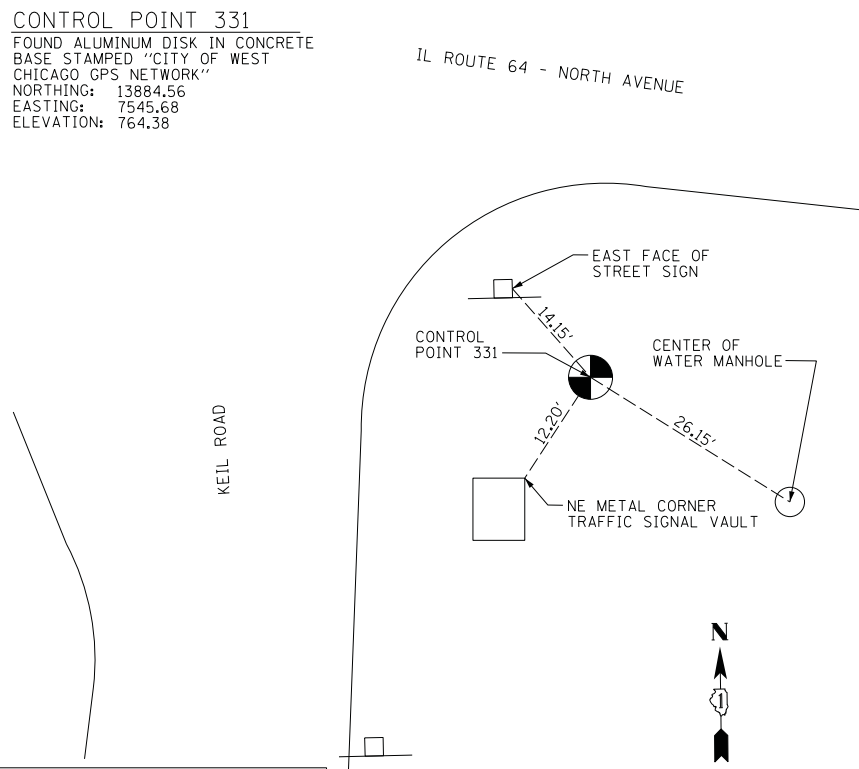
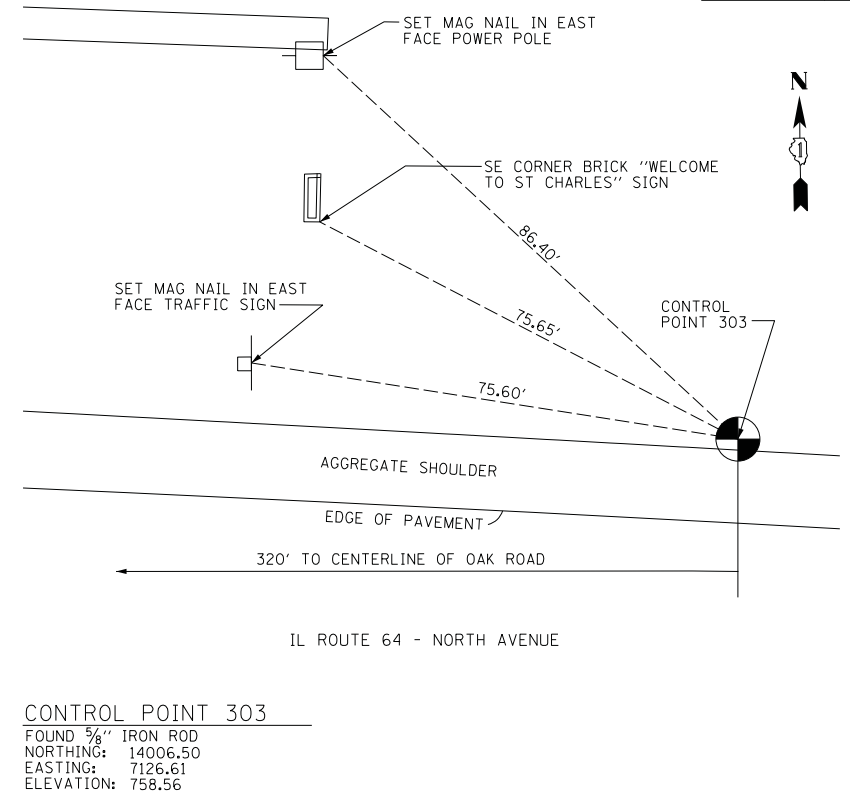
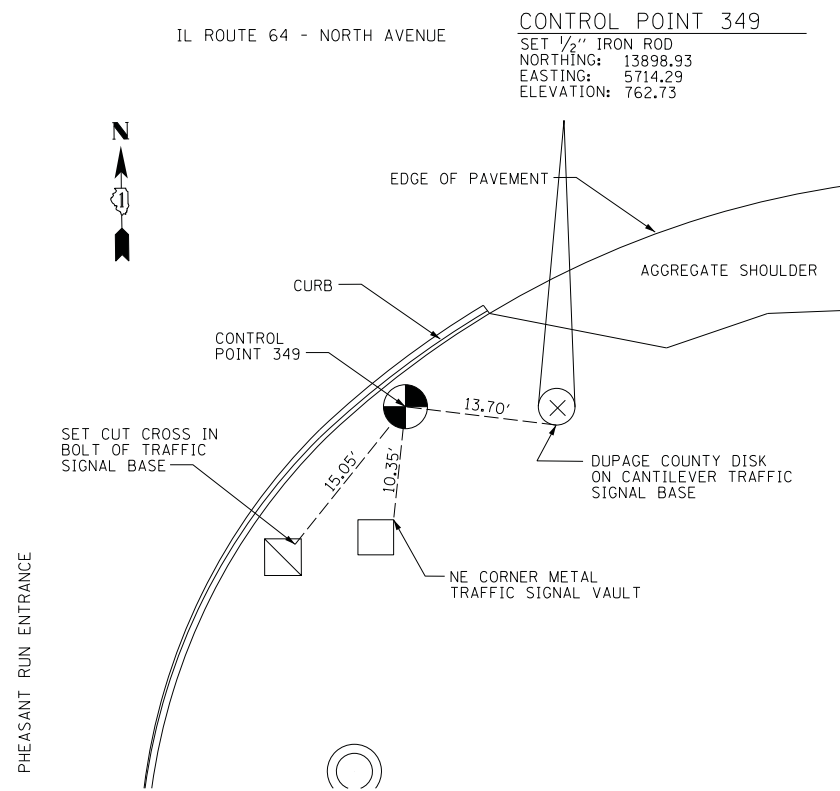
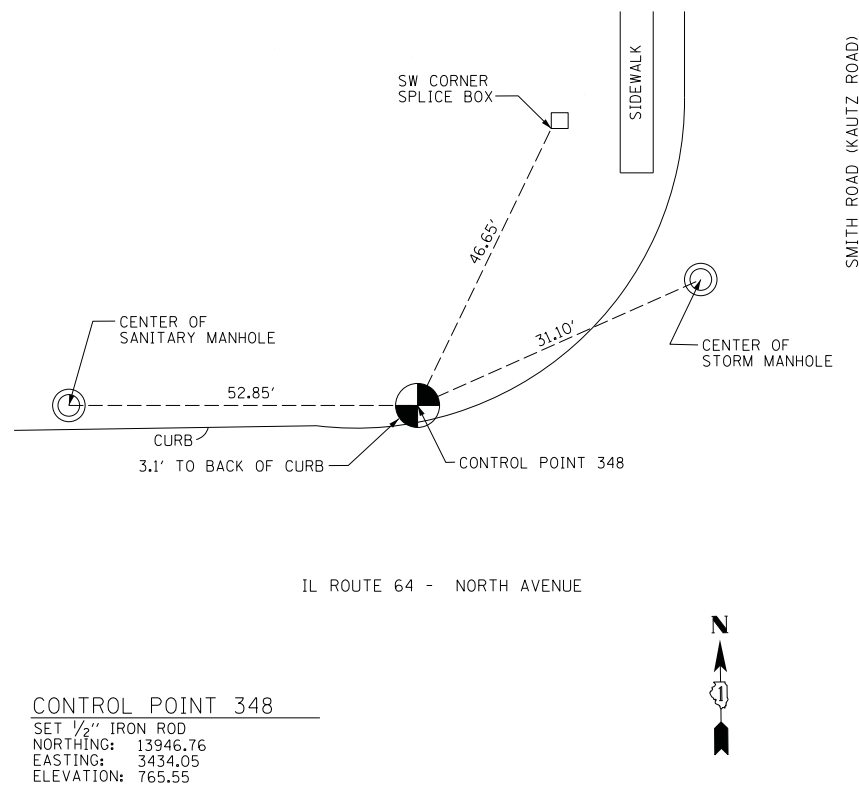


F.A.P. RTE.	SECTION	COUNTY	TOTAL SHEETS	SHEET NO.
307	130N-3 (11)	DUPAGE	141	20
STA.		TO STA.		
FED. ROAD DIST. NO.		ILLINOIS	FED. AID PROJECT	

60R46



REVISIONS	
NAME	DATE

ILLINOIS DEPARTMENT OF TRANSPORTATION
 F.A.P. ROUTE 307 (ILLINOIS ROUTE 64)

ALIGNMENT, TIES AND CONTROL POINTS

SCALE: VERT: 1"=200'
 HORIZ: 1"=200'
 DATE: FEBRUARY 1, 2013
 DRAWN BY: AFC
 CHECKED BY: NJH

AT-03