

F.A.P. RTE.	SECTION	COUNTY	TOTAL SHEETS	SHEET NO.
307	130N-3 (11)	DUPAGE	141	96
STA.	TO STA.			
FED. ROAD DIST. NO.	ILLINOIS	FED. AID PROJECT		

60R46

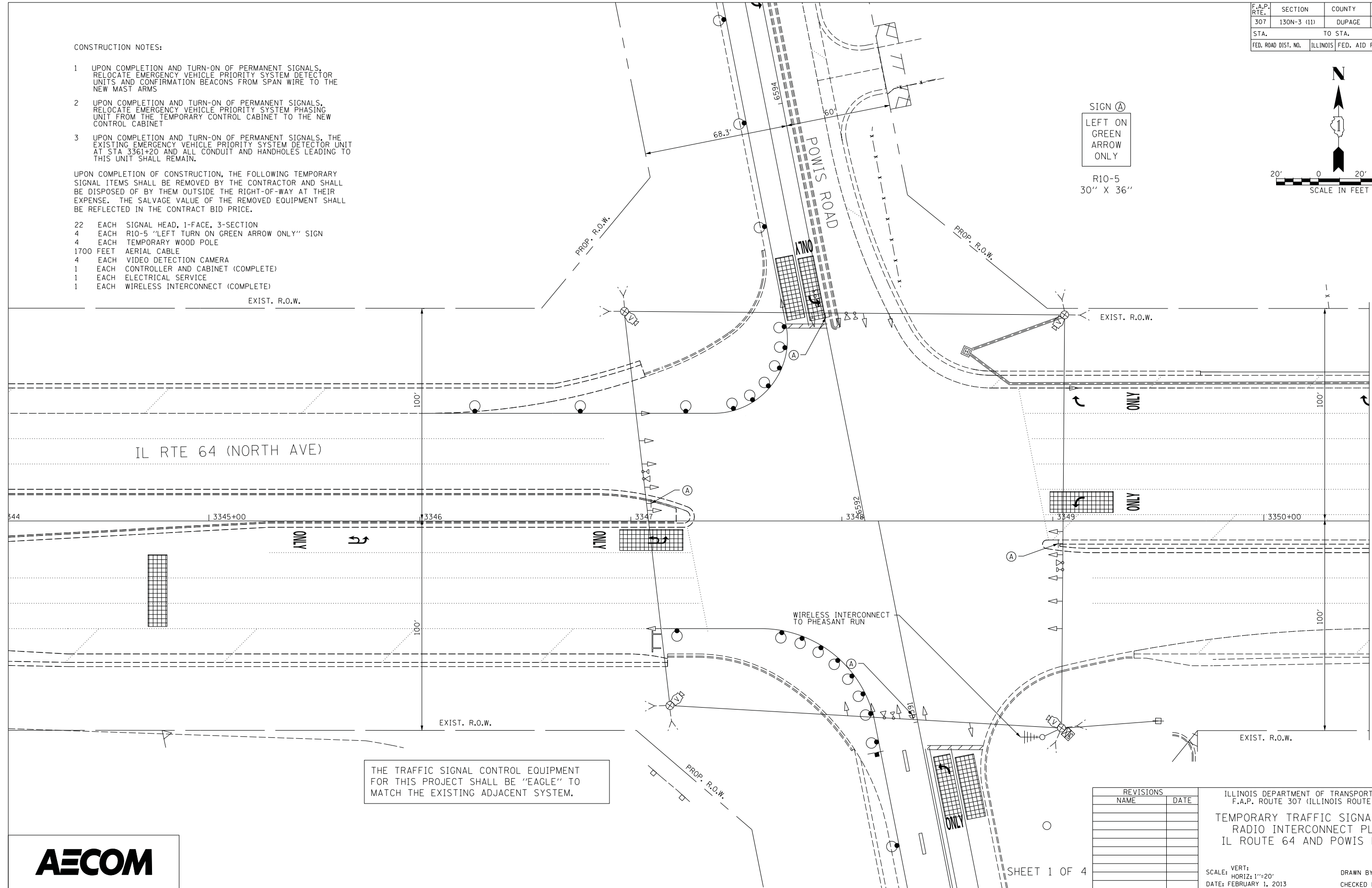
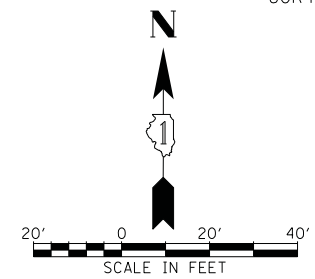
CONSTRUCTION NOTES:

- UPON COMPLETION AND TURN-ON OF PERMANENT SIGNALS, RELOCATE EMERGENCY VEHICLE PRIORITY SYSTEM DETECTOR UNITS AND CONFIRMATION BEACONS FROM SPAN WIRE TO THE NEW MAST ARMS
- UPON COMPLETION AND TURN-ON OF PERMANENT SIGNALS, RELOCATE EMERGENCY VEHICLE PRIORITY SYSTEM PHASING UNIT FROM THE TEMPORARY CONTROL CABINET TO THE NEW CONTROL CABINET
- UPON COMPLETION AND TURN-ON OF PERMANENT SIGNALS, THE EXISTING EMERGENCY VEHICLE PRIORITY SYSTEM DETECTOR UNIT AT STA 3361+20 AND ALL CONDUIT AND HANDHOLES LEADING TO THIS UNIT SHALL REMAIN.

UPON COMPLETION OF CONSTRUCTION, THE FOLLOWING TEMPORARY SIGNAL ITEMS SHALL BE REMOVED BY THE CONTRACTOR AND SHALL BE DISPOSED OF BY THEM OUTSIDE THE RIGHT-OF-WAY AT THEIR EXPENSE. THE SALVAGE VALUE OF THE REMOVED EQUIPMENT SHALL BE REFLECTED IN THE CONTRACT BID PRICE.

- 22 EACH SIGNAL HEAD, 1-FACE, 3-SECTION
- 4 EACH R10-5 "LEFT TURN ON GREEN ARROW ONLY" SIGN
- 4 EACH TEMPORARY WOOD POLE
- 1700 FEET AERIAL CABLE
- 4 EACH VIDEO DETECTION CAMERA
- 1 EACH CONTROLLER AND CABINET (COMPLETE)
- 1 EACH ELECTRICAL SERVICE
- 1 EACH WIRELESS INTERCONNECT (COMPLETE)

SIGN (A)
 LEFT ON GREEN
 ARROW
 ONLY
 R10-5
 30" X 36"



THE TRAFFIC SIGNAL CONTROL EQUIPMENT FOR THIS PROJECT SHALL BE "EAGLE" TO MATCH THE EXISTING ADJACENT SYSTEM.

REVISIONS	
NAME	DATE

ILLINOIS DEPARTMENT OF TRANSPORTATION
 F.A.P. ROUTE 307 (ILLINOIS ROUTE 64)
 TEMPORARY TRAFFIC SIGNAL AND
 RADIO INTERCONNECT PLAN
 IL ROUTE 64 AND POWIS ROAD
 SCALE: VERT: 1"=20'
 HORIZ: 1"=20'
 DATE: FEBRUARY 1, 2013
 DRAWN BY: JS
 CHECKED BY: WP



MATCHLINE A-A