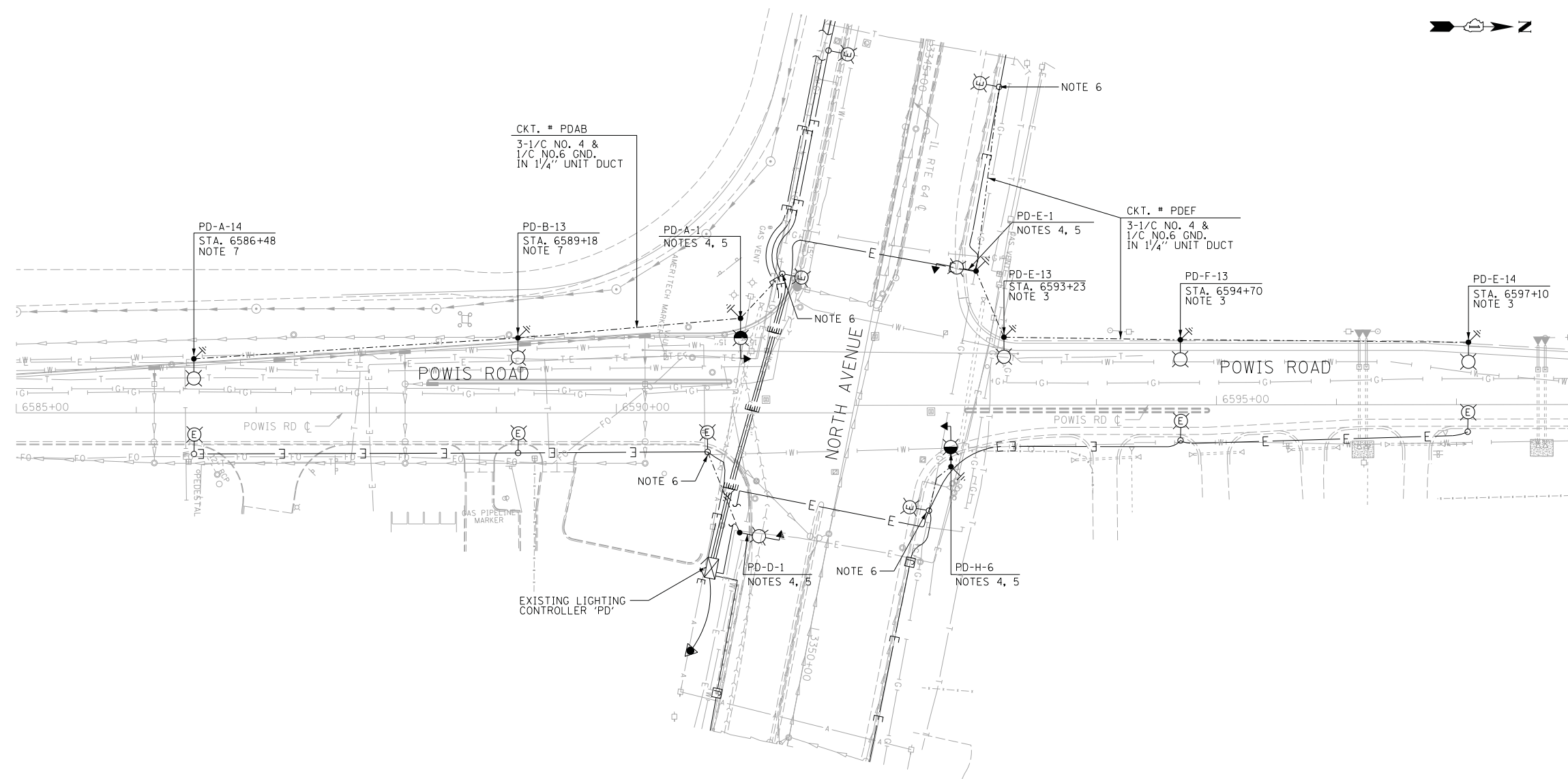
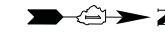


F.A.P. RTE.	SECTION	COUNTY	TOTAL SHEETS	SHEET NO.
307	130N-3 (11)	DUPAGE	141	118
STA.		TO STA.		
FED. ROAD DIST. NO.	ILLINOIS	FED. AID PROJECT		

NOTES: 60R46

- SEE SHEET E-01 FOR ELECTRICAL SYMBOLS, CALL-OUT SAMPLES, ABBREVIATIONS AND GENERAL NOTES.
- INSTALL ONE 1/4" UNIT DUCT PER URSC UNDER PAVEMENT.
- THE TYPICAL LIGHT POLE SETBACK SHALL BE 3 FEET FROM THE EDGE OF CONCRETE PAVEMENT TO THE FACE OF THE LIGHT POLE.
- SEE TRAFFIC SIGNAL PLANS FOR THE EXACT LOCATIONS OF THE COMBINATION TRAFFIC SIGNAL/LIGHT POLES.
- PROVIDE 1-4" PVC CONDUIT SLEEVE IN THE POLE FOUNDATION FOR THE LIGHTING UNIT DUCTS. COORDINATE ALL WORK WITH THE TRAFFIC SIGNAL INSTALLATION.
- ROUTE NEW LIGHTING UNIT DUCT THROUGH EXISTING CONDUIT SLEEVE IN POLE FOUNDATION TO MAKE THE CONNECTIONS TO THE EXISTING LIGHTING CIRCUITS LOCATED INSIDE THE EXISTING LIGHT POLE. THIS WORK SHALL BE CONSIDERED INCIDENTAL TO THE CONTRACT AND A SEPARATE PAYMENT WILL NOT BE MADE.
- THE TYPICAL LIGHT POLE SETBACK SHALL BE 3 FEET FROM THE BACK OF CURB TO THE FACE OF THE LIGHT POLE.



REVISIONS	
NAME	DATE

ILLINOIS DEPARTMENT OF TRANSPORTATION
 F.A.P. ROUTE 307 (ILLINOIS ROUTE 64)

PROPOSED
 ROADWAY LIGHTING PLAN
 POWIS ROAD
 STA. 6585+00 TO STA. 6598+00

SCALE: 1" = 50'
 DATE: FEBRUARY 1, 2013

DRAWN BY: AFC
 CHECKED BY: WDS